

CAR SPACE SCHEDULE

LEVEL	No. OF SPACES
BASEMENT LEVEL 1	55
BASEMENT LEVEL 2	63
TOTAL	118

CAR SPACE ALLOCATION

	No. OF SPACES
RESIDENT CARSPACE	20
MEDICAL STAFF	17
CAFE STAFF	2
CHILD CARE STAFF	12
MEDICAL VISITOR	36
CHILDCARE VISITOR	20
VISITOR	11
TOTAL	118

No.	DATE	AMENDMENTS	BY
G	10.10.16	FURTHER INFORMATION SUBMISSION	RL
F	23.08.16	4 STOREY SUBMISSION TO COUNCIL	SN
E	27.11.14	ENDORSED PLANNING SUBMISSION	SN
D	30.01.14	RFI SUBMISSION TO COUNCIL	SN
C	13.11.13	TOWN PLANNING AMENDMENT	SN
B	30.04.13	VCAT SUBMISSION	SN
A	29.10.12	TOWN PLANNING SUBMISSION	SN



18 Drummond Street Carlton Victoria Australia
Telephone: (03) 9654 0621
Facsimile: (03) 9654 0624

All Drawings & Designs remain the property of BMG Architects & are subject to the laws & protection of COPYRIGHT.

PROJECT TITLE

PROPOSED MIXED USE DEVELOPMENT AT
170-174 HIGHBURY ROAD, MOUNT WAVERLEY

DRAWING TITLE

BASEMENT LEVEL 1
RL. 62.30

DATE:
03.10.12

DRAWN:
SN

JOB No:
1208


DWG No:
TP01

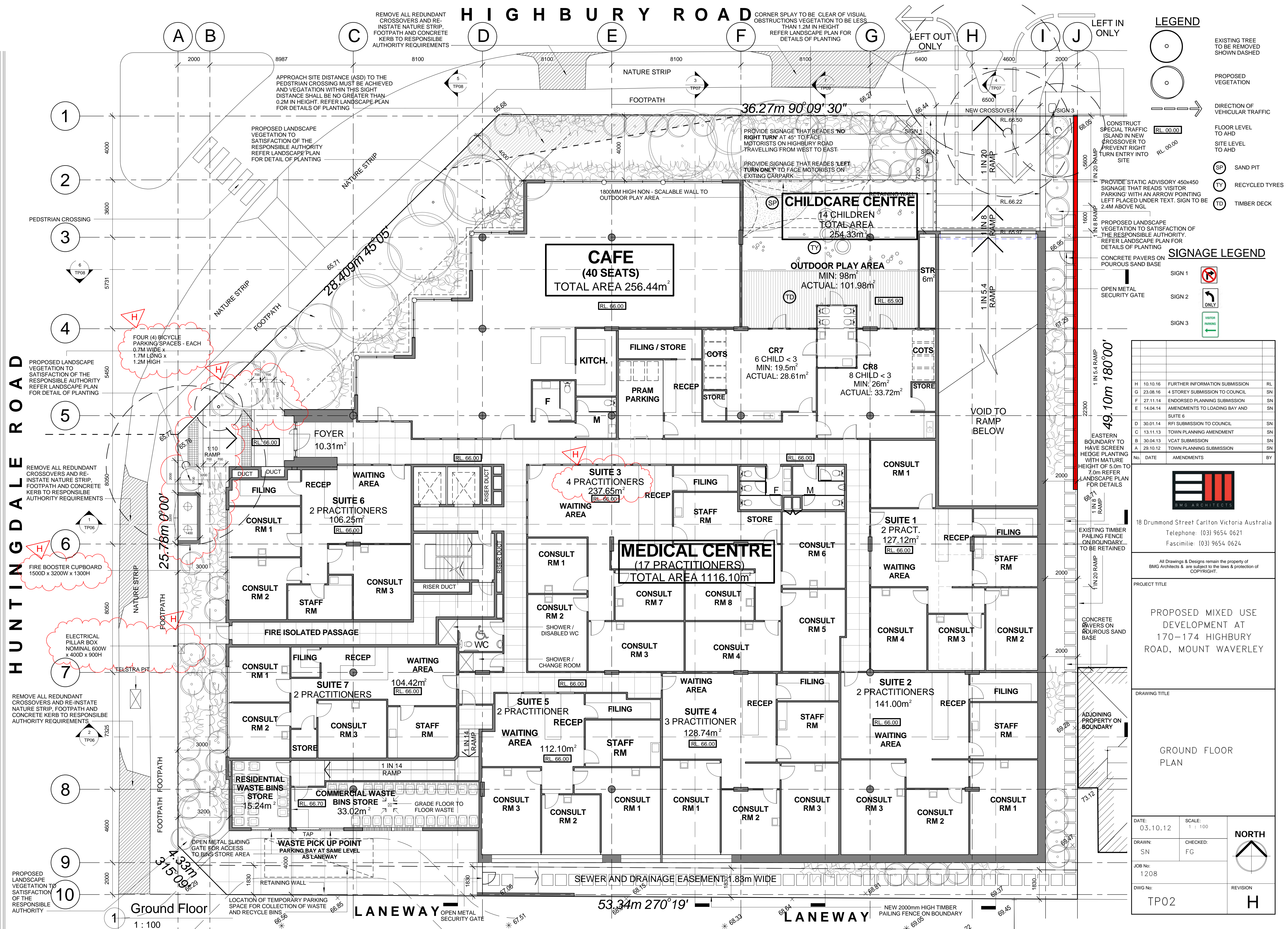
SCALE:
1 : 100

CHECKED:
FG

REVISION
G

NORTH





LEGEND

EXISTING TREE TO BE REMOVED SHOWN DASHED

PROPOSED VEGETATION

DIRECTION OF VEHICULAR TRAFFIC

FLOOR LEVEL TO AHD

SITE LEVEL TO AHD

SAND PIT

RECYCLED TYRES

TIMBER DECK

SIGNAGE LEGEND

SIGN 1

SIGN 2

SIGN 3

No.	DATE	AMENDMENTS	BY
H	10.10.16	FURTHER INFORMATION SUBMISSION	RL
G	23.08.16	4 STOREY SUBMISSION TO COUNCIL	SN
F	27.11.14	ENDORSED PLANNING SUBMISSION	SN
E	14.04.14	AMENDMENTS TO LOADING BAY AND SUITE 6	SN
D	30.01.14	RFI SUBMISSION TO COUNCIL	SN
C	13.11.13	TOWN PLANNING AMENDMENT	SN
B	30.04.13	VCAT SUBMISSION	SN
A	29.10.12	TOWN PLANNING SUBMISSION	SN

BMG ARCHITECTS

18 Drummond Street Carlton Victoria Australia
Telephone: (03) 9654 0621
Facsimile: (03) 9654 0624

All Drawings & Designs remain the property of BMG Architects & are subject to the laws & protection of COPYRIGHT.

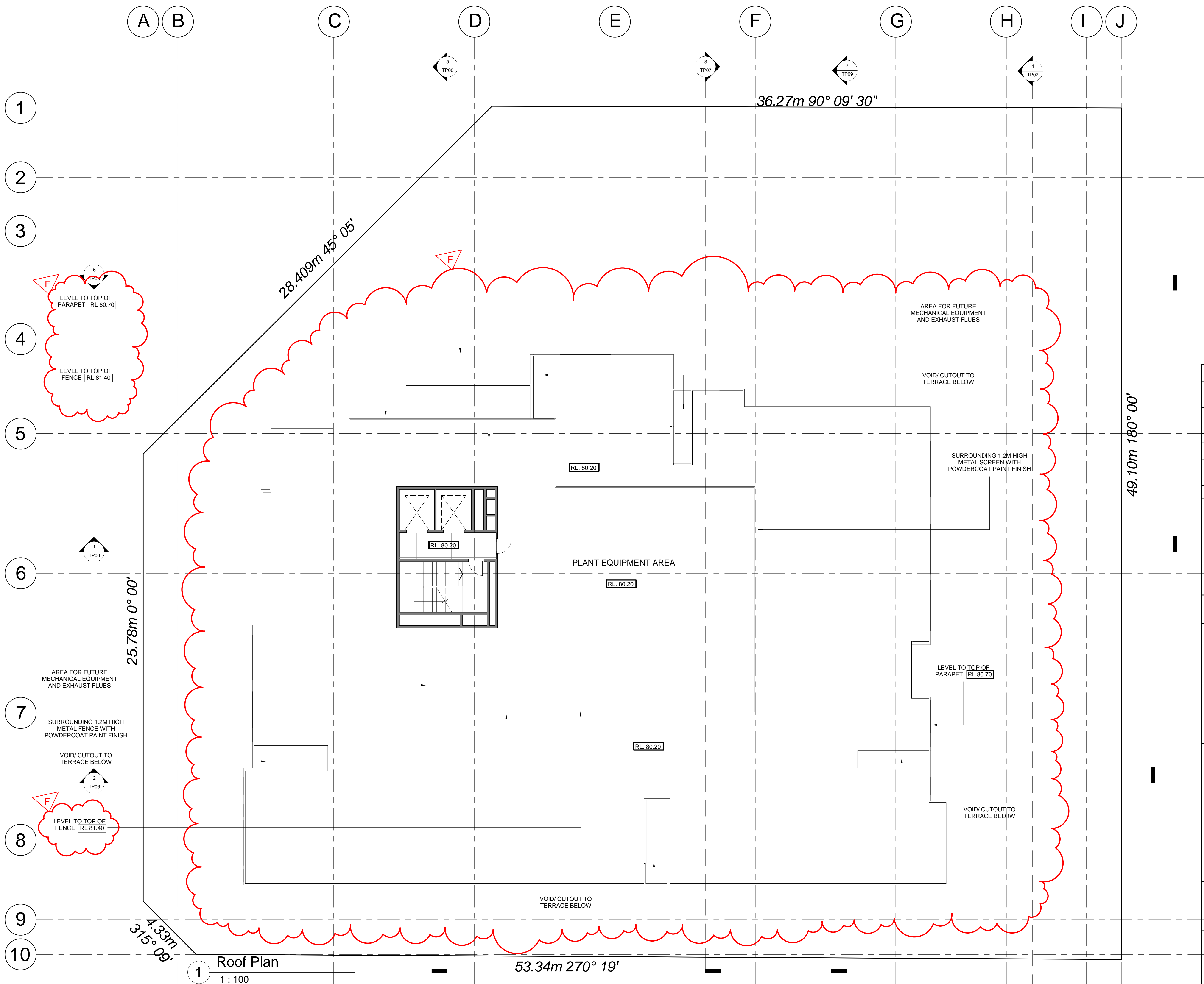
PROJECT TITLE

PROPOSED MIXED USE DEVELOPMENT AT 170-174 HIGHBURY ROAD, MOUNT WAVERLEY

DRAWING TITLE


GROUND FLOOR PLAN

DATE: 03.10.12	SCALE: 1 : 100	NORTH
DRAWN: SN	CHECKED: FG	
JOB No: 1208		
DWG No: TP02	REVISION: H	



1 Roof Plan
1 : 100

F	23.08.16	4 STOREY SUBMISSION TO COUNCIL	SN
E	27.11.14	ENDORSED PLANNING SUBMISSION	SN
D	30.01.14	RFI SUBMISSION TO COUNCIL	SN
C	-	-	-
B	-	-	-
A	-	-	-
No.	DATE	AMENDMENTS	BY



18 Drummond Street Carlton Victoria Australia
Telephone: (03) 9654 0621
Facsimile: (03) 9654 0624

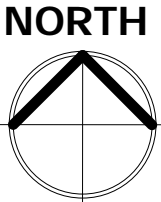
All Drawings & Designs remain the property of
BMG Architects & are subject to the laws & protection of
COPYRIGHT.



PROJECT TITLE

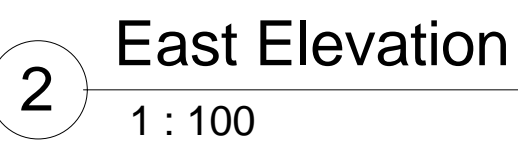
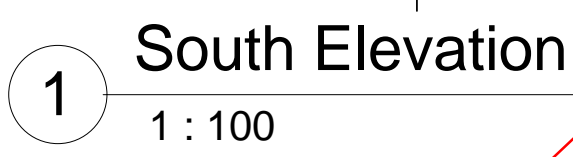
PROPOSED MIXED USE
DEVELOPMENT AT
170-174 HIGHBURY
ROAD, MOUNT WAVERLEY











DRAWING TITLE

ROOF PLAN

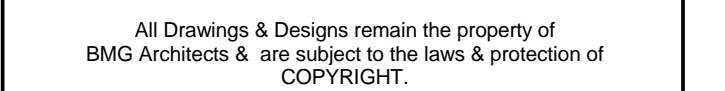
DATE: 30.01.14	SCALE: 1 : 100	 NORTH
DRAWN: SN	CHECKED: FG	
JOB No: 1208		
DWG No: TP03B		REVISION F


A	23.08.16	4 STOREY SUBMISSION TO COUNCIL			SN
No.	DATE	AMENDMENTS			BY
<div style="text-align: center;">  <p>18 Drummond Street Carlton Victoria Australia Telephone: (03) 9654 0621 Facsimilie: (03) 9654 0624</p> </div>					
All Drawings & Designs remain the property of BMG Architects & are subject to the laws & protection of COPYRIGHT.					
PROJECT TITLE					
<div style="text-align: center;"> <p>PROPOSED MIXED USE DEVELOPMENT AT 170-174 HIGHBURY ROAD, MOUNT WAVERLEY</p> </div>					
DRAWING TITLE					
<div style="text-align: center;"> <p>THIRD FLOOR PLAN</p> </div>					
DATE: 25.07.14		SCALE: 1 : 100		<div style="text-align: center;"> NORTH  </div>	
DRAWN: SN		CHECKED: FG			
JOB No: 1208					
DWG No: TP03C				REVISION A	

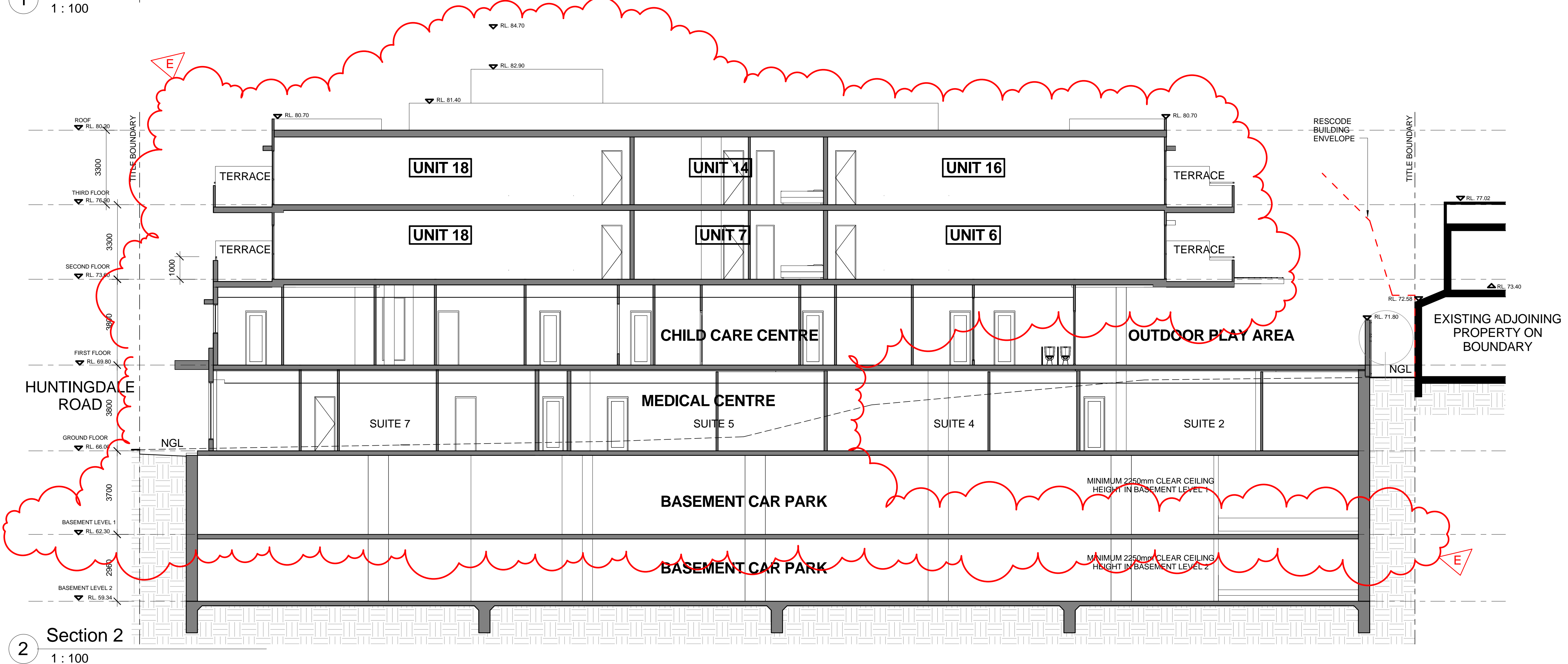
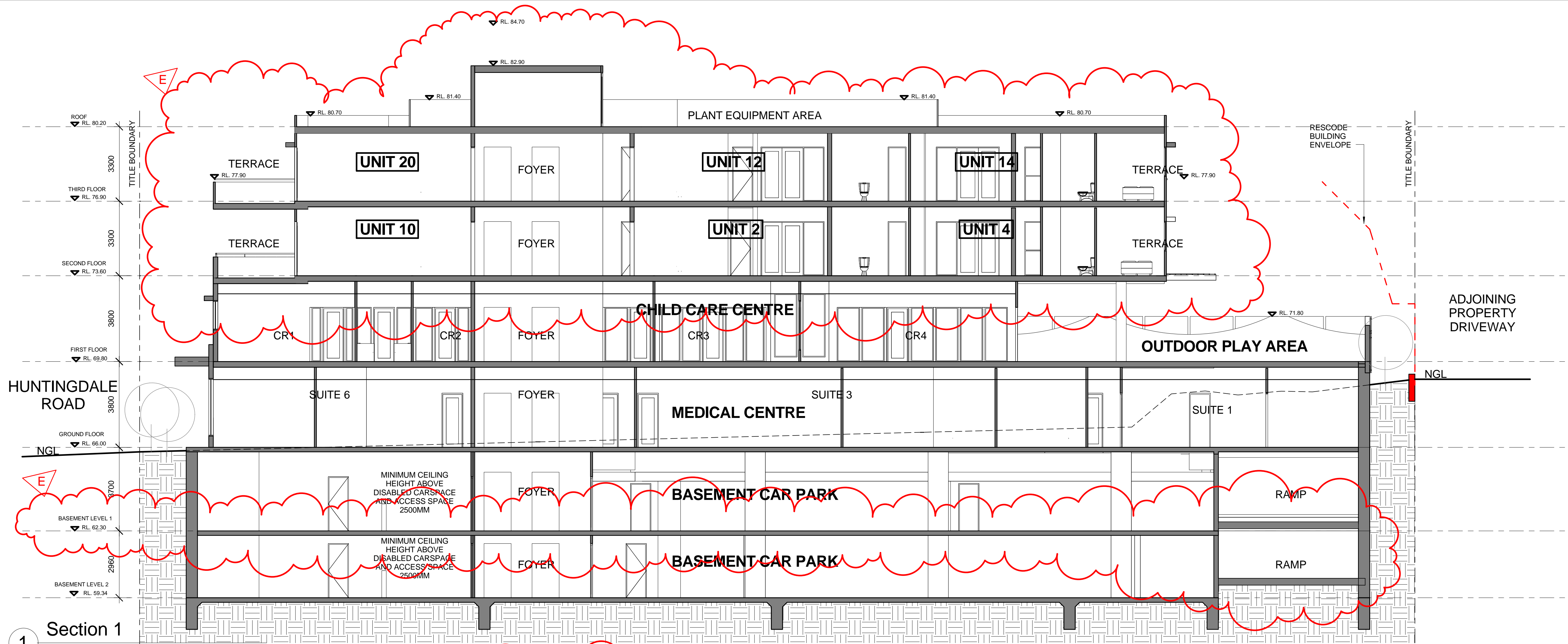



- | | | |
|---|---|---|
|  | - | ACRYLIC RENDER FINISH TYPE 1
COLOUR: DULUX WHITE ON WHITE |
|  | - | ACRYLIC RENDER FINISH TYPE 2
COLOUR: DULUX DIESKAU PG2.C1 |
|  | - | STONE CLADDING - POLISHED
MARBLE OR BLUESTONE SLAB OR
SIMILAR |
|  | - | METAL CLADDING TYPE 1 -
COLOURBOND METAL WALL
CLADDING WITH STANDING SEAM
JOINTS NOM. 20mm HIGH.
PANEL WIDTH NOM. 350mm.
COLOUR: COLOURBOND METALLIC
STEEL RANGE 'FACADE' |
|  | - | COLOURED FIBRE CEMENT SHEET
'VITRAPANEL' OR SIMILAR HIGH QUALITY
EXTERNAL CLADDING MATERIAL
COLOUR: BRIGHT RED R200 |
|  | - | COLOURED GLASS - DIGITAL IMAGE
LANDSCAPE THEME |
|  | - | NATURAL ANODIZED ALUMINIUM |
|  | - | CLEAR GLASS BALUSTRADE WITH
STAINLESS STEEL HANDRAIL |
|  | - | COLOURBOND ' SHALE GREY' |
|  | - | STAINLESS STEEL HANDRAIL |
|  | - | PERFORATED METAL NON - SCALABLE
SCREEN WITH RUST METAL FINISH |

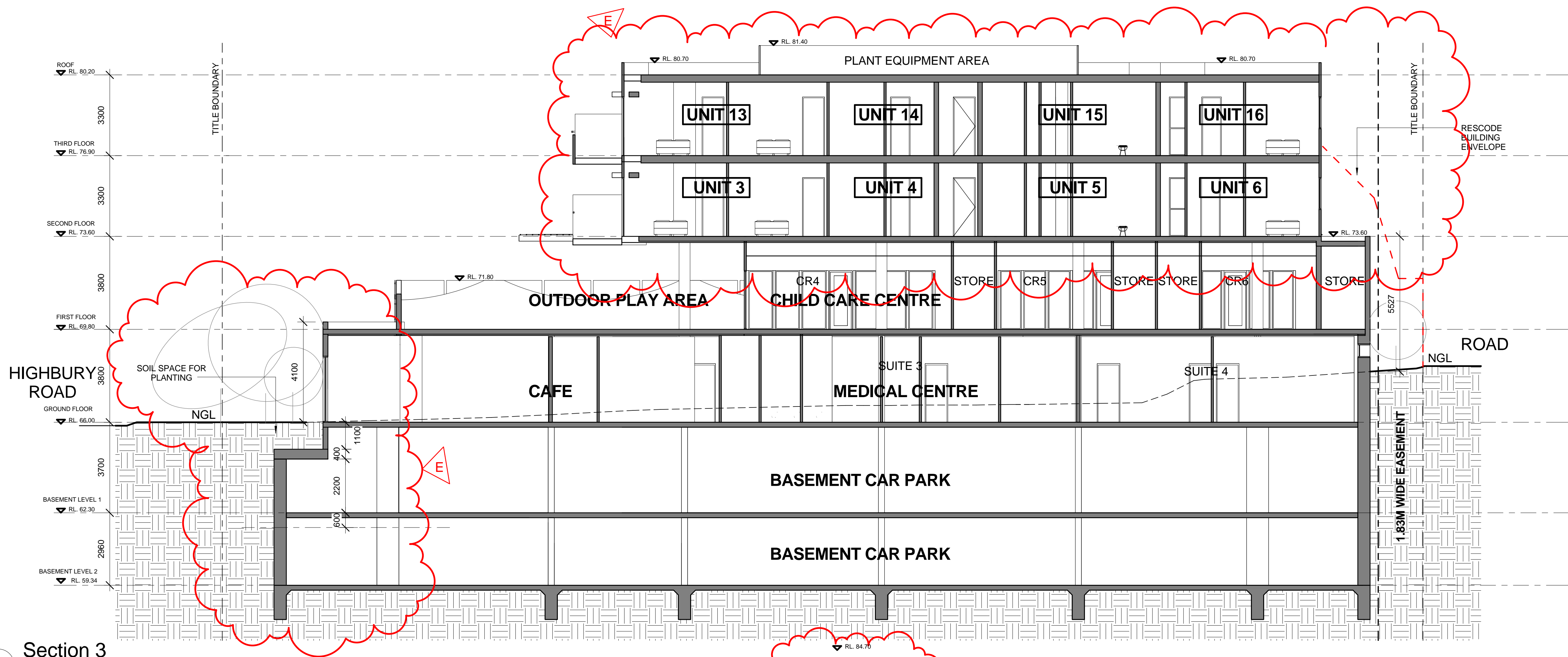
E	TBC	SCHEME 3	SN
D	27.11.14	ENDORSED PLANNING SUBMISSION	SN
C	13.11.13	TOWN PLANNING AMENDMENT	SN
B	30.04.13	VCAT SUBMISSION	SN
A	29.10.12	TOWN PLANNING SUBMISSION	SN
No.	DATE	AMENDMENTS	BY



DATE: 03.10.12	SCALE: 1 : 100	
DRAWN: SN	CHECKED: FG	
JOB No: 1208		REVISION E
DWG No: TP05		



E TBC SCHEME 3 SN		
D 27.11.14 ENDORSED PLANNING SUBMISSION SN		
C 13.11.13 TOWN PLANNING AMENDMENT SN		
B 30.04.13 VCAT SUBMISSION SN		
A 29.10.12 TOWN PLANNING SUBMISSION SN		
No.	DATE	AMENDMENTS
BY		
		
18 Drummond Street Carlton Victoria Australia		
Telephone: (03) 9654 0621		
Facsimile: (03) 9654 0624		
All Drawings & Designs remain the property of BMG Architects & are subject to the laws & protection of COPYRIGHT.		
PROJECT TITLE		
PROPOSED MIXED USE DEVELOPMENT AT 170-174 HIGHBURY ROAD, MOUNT WAVERLEY		
DRAWING TITLE		
SECTIONS		
DATE:	03.10.12	SCALE: 1 : 100
DRAWN:	SN	CHECKED: FG
JOB No:	1208	
DWG No:	TP06	REVISION E




3 Section 3
1 : 100



4 Section 4
1 : 100

E TBC SCHEME 3 SN		
D 27.11.14 ENDORSED PLANNING SUBMISSION SN		
C 13.11.13 TOWN PLANNING AMENDMENT SN		
B 30.04.13 VCAT SUBMISSION SN		
A 29.10.12 TOWN PLANNING SUBMISSION SN		
No.	DATE	AMENDMENTS
		BY



18 Drummond Street Carlton Victoria Australia
Telephone: (03) 9654 0621
Facsimile: (03) 9654 0624

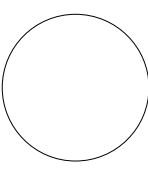
All Drawings & Designs remain the property of
BMS Architects & are subject to the laws & protection of
COPYRIGHT.

PROJECT TITLE

PROPOSED MIXED USE
DEVELOPMENT AT
170-174 HIGHBURY
ROAD, MOUNT WAVERLEY

DRAWING TITLE

SECTIONS

DATE: 03.10.12	SCALE: 1 : 100	
DRAWN: SN	CHECKED: FG	
JOB No: 1208		
DWG No: TP07		REVISION E

