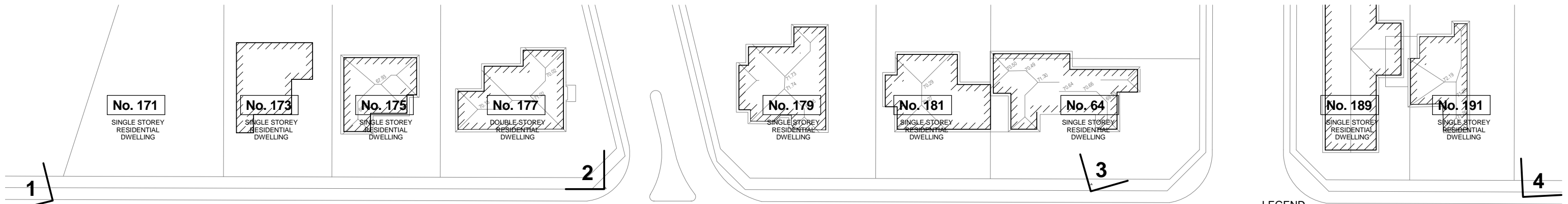


PHOTO CONTROL POINT COORDINATES
MARKED IN PINK PAINT ON GROUND

| POINT (PCP) | X | Y | Z |
|-------------|----------|----------|-------|
| 1 | 1882.210 | 2019.793 | 60.31 |
| 2 | 1978.664 | 2019.375 | 64.07 |
| 3 | 2054.475 | 2019.974 | 66.63 |
| 4 | 2131.946 | 2018.494 | 68.86 |

| | |
|------------------|-----------------------|
| Last Plan Ref. : | Datum : AHD |
| MELWAY REF. | SCALE 1: 300 |
| SURVEYOR: AQ, EC | 3 0 3 6 9 12 |
| DRAWN: EC | LENGTHS ARE IN METRES |
| CHECKED: PH | |

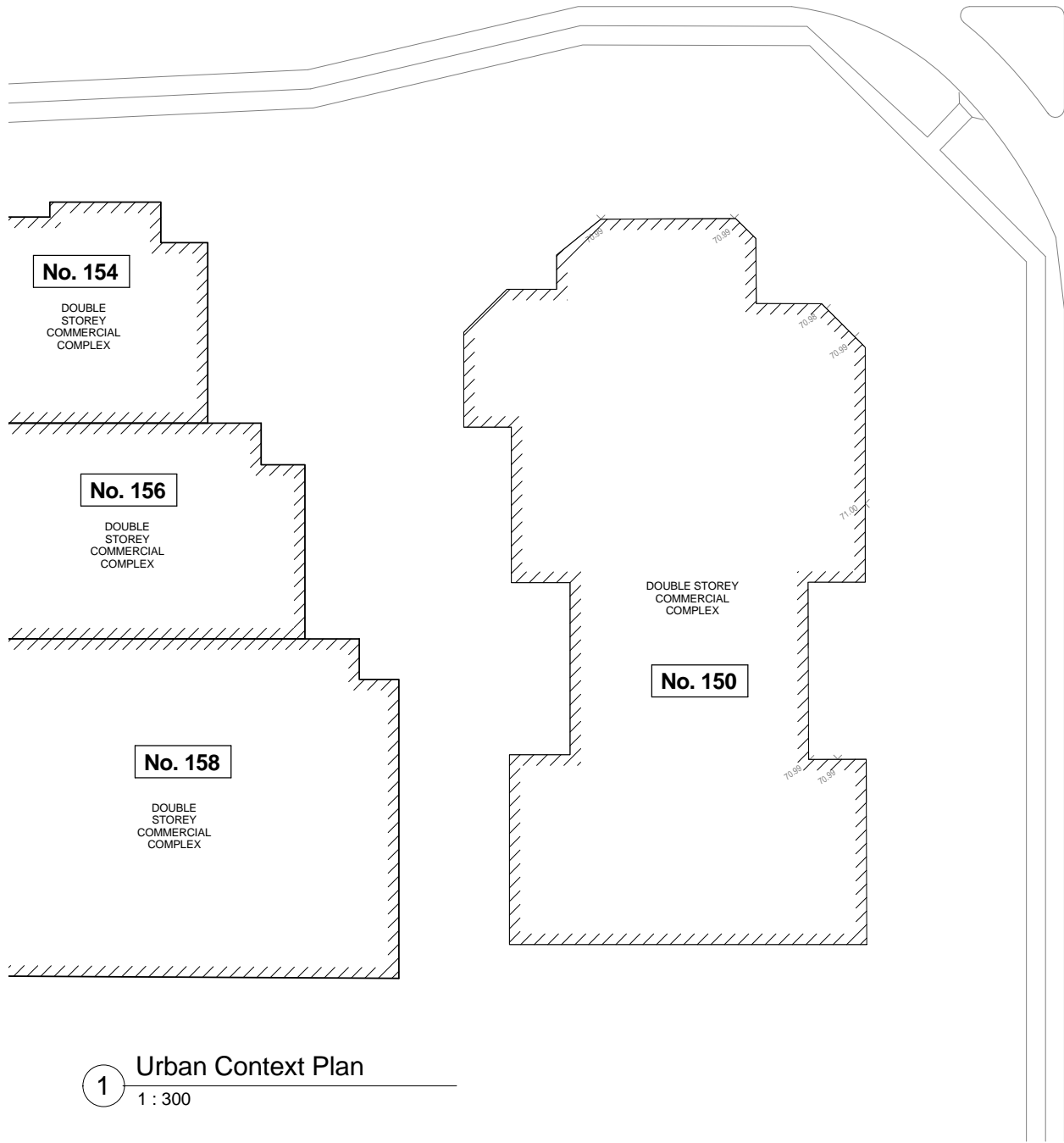
| SITE CONTEXT PLAN | |
|---|---|
| 170-174 Highbury Road MOUNT WAVERLEY | |
| DIGITAL LAND SURVEYS A.C.N. 100 548 141 LEVEL 1, 425 HIGH STREET KEW VIC. 3101 Phone (03) 9855 2727 Fax 9855 2728 email: dlsurvey@bigpond.net.au | REF No. 215007 DATE ISSUED Original Sheet Size A1 |



H I G H B U R Y R O A D

LEGEND

- P.O.S - PRIVATE OPEN SPACE
HW - HABITABLE WINDOW
[Symbol] - VIEW LOCATION AT 1.7M ABOVE NATURAL GROUND LEVEL



H U N T I N G D A L E R O A D



B A R L Y N R O A D

1 Urban Context Plan
1 : 300

| No. | DATE | AMENDMENTS | BY | No. | DATE | AMENDMENTS | BY |
|-----|------|------------|----|-----|------|------------|----|
| | | | | | | | |
| | | | | | | | |
| | | | | | | | |
| | | | | | | | |
| | | | | | | | |
| | | | | | | | |
| | | | | | | | |
| | | | | | | | |
| | | | | | | | |
| | | | | | | | |


18 Drummond Street Carlton Victoria Australia
Telephone: (03) 9654 0621
Facsimile: (03) 9654 0624



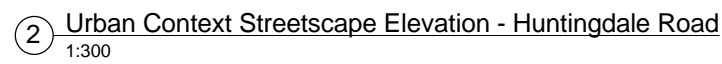
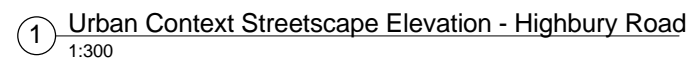
PROJECT TITLE



PROPOSED MIXED USE DEVELOPMENT AT
170-174 Highbury Road, Mount Waverley

DRAWING TITLE

URBAN CONTEXT PLAN

| | | |
|-----------------|-------------------|-------------------|
| DRAWN: SN | CHECKED: FG | DATE: 18.01.16 |
| JOB No: 1208 | SCALE: 1 : 300 | REVISION |
| DWG No: | UC01 | |





| No. | | | DATE | | | AMENDMENTS | | | BY | | | No. | | | DATE | | | AMENDMENTS | | | BY | | | <div> 18 Drummond Street Carlton Victoria Australia Telephone: (03) 9654 0621 Facsimilie: (03) 9654 0624</div> | <div></div> | PROJECT TITLE | | | DRAWING TITLE | | | DRAWN: | | | CHECKED: | | | DATE: | | |
|---------|--|--|------|--|--|------------|--|--|---------|--|--|-----|--|--|------|--|--|------------|--|--|----|--|--|---|--|---------------|--|--|---------------|--|--|--------|--|--|----------|--|--|-------|--|--|
| | | | | | | | | | | | | | | | | | | | | | SN | | | | | FG | | | 18.01.16 | | | | | | | | | | | |
| JOB No: | | | 1208 | | | SCALE: | | | 1 : 300 | | | | | | | | | | | | | | | | | | | | | | | | | | | | | | | |
| DWG No: | | | UC02 | | | REVISION | | | | | | | | | | | | | | | | | | | | | | | | | | | | | | | | | | |
| | | | | | | | | | | | | | | | | | | | | | | | | | | | | | | | | | | | | | | | | |
| | | | | | | | | | | | | | | | | | | | | | | | | | | | | | | | | | | | | | | | | |
| | | | | | | | | | | | | | | | | | | | | | | | | | | | | | | | | | | | | | | | | |
| | | | | | | | | | | | | | | | | | | | | | | | | | | | | | | | | | | | | | | | | |



HIGHBURY ROAD STREET VIEW 1 - APPROVED SCHEME



HIGHBURY ROAD STREET VIEW 1 - PROPOSED SCHEME

| | | | | | | | | | | | | | |
|---|------|------------|----|-----|------|------------|----|--|--|------------------------------------|-----------------|----------------|-------------------|
| No. | DATE | AMENDMENTS | BY | No. | DATE | AMENDMENTS | BY |   | PROJECT TITLE | DRAWING TITLE | DRAWN: SN | CHECKED: FG | DATE: 18.01.16 |
| | | | | | | | | | PROPOSED MIXED USE DEVELOPMENT AT 170-174 Highbury Road, Mount Waverley | Highbury Road 3D Street View 01 | JOB No: 1208 | SCALE: | |
| | | | | | | | | | | | DWG No: UC03 | REVISION | |
| | | | | | | | | | | | | | |
| | | | | | | | | | | | | | |
| All Drawings & Designs remain the property of BMG Architects & are subject to the laws & protection of COPYRIGHT. | | | | | | | | | | | | | |



HIGHBURY ROAD STREET VIEW 2 - APPROVED SCHEME



HIGHBURY ROAD STREET VIEW 2 - PROPOSED SCHEME



HIGHBURY ROAD STREET VIEW 3 - APPROVED SCHEME

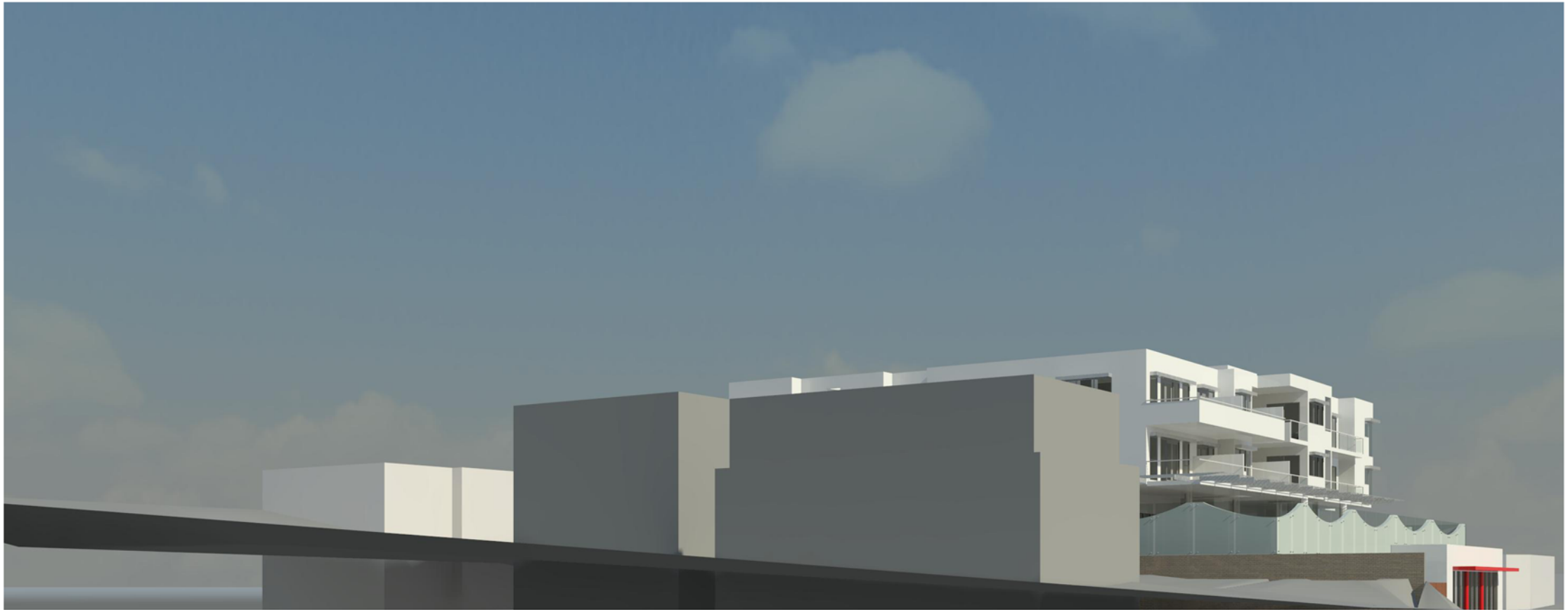


HIGHBURY ROAD STREET VIEW 3 - PROPOSED SCHEME



[illegible]



HIGHBURY ROAD STREET VIEW 4 - APPROVED SCHEME



HIGHBURY ROAD STREET VIEW 4 - PROPOSED SCHEME

| No. | DATE | AMENDMENTS | BY | No. | DATE | AMENDMENTS | BY |  18 Drummond Street Carlton Victoria Australia Telephone: (03) 9654 0621 Facsimile: (03) 9654 0624 |  | PROJECT TITLE | DRAWING TITLE | DRAWN: SN | CHECKED: FG | DATE: 18.01.16 | | |
|-----|------|------------|----|-----|------|------------|----|--|---|---------------|--|------------------------------------|-----------------|-------------------|----------|--|
| | | | | | | | | | | | PROPOSED MIXED USE DEVELOPMENT AT 170-174 HIGHBURY ROAD, MOUNT WAVERLEY | HIGHBURY ROAD 3D STREET VIEW 04 | JOB No: 1208 | SCALE: | | |
| | | | | | | | | | | | | | | DWG No: UC05 | REVISION | |
| | | | | | | | | | | | | | | | | |
| | | | | | | | | | | | | | | | | |
| | | | | | | | | All Drawings & Designs remain the property of BMC Architects & are subject to the laws & protection of COPYRIGHT. | | | | | | | | |