

Infill Planting Locations




The table below lists the details of the locations where trees will be planted in currently vacant sites along Glenview Court, Glen Waverley. For further location details, please refer to the street map outlining all removals, replacements and infill planting.

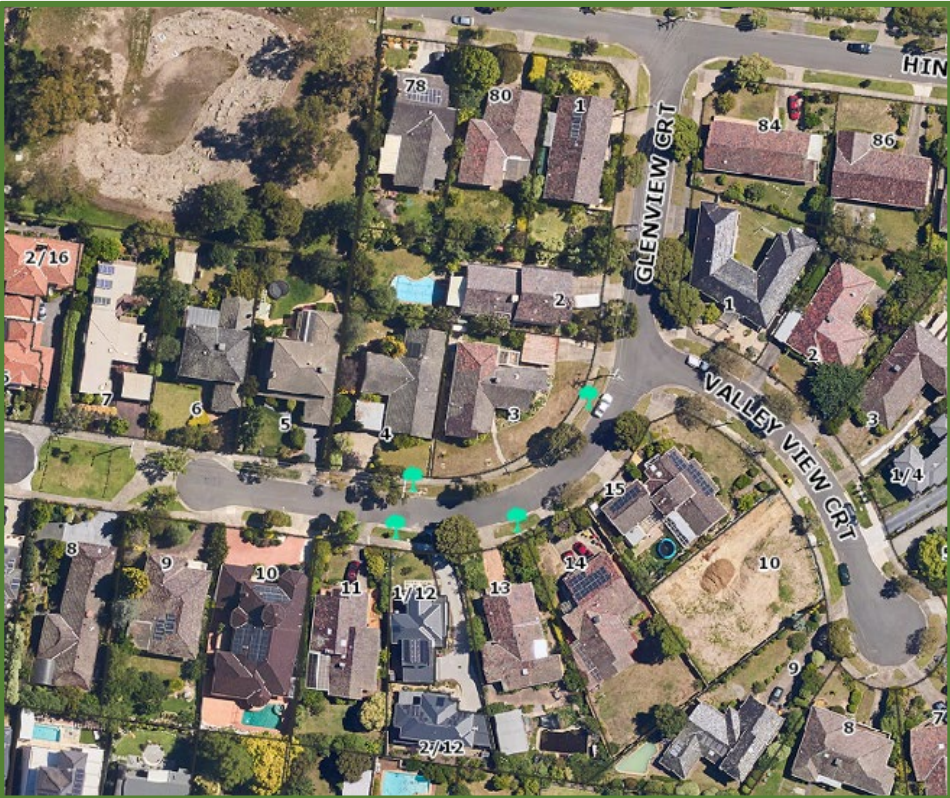
No.	Street Address	Assessment Outcome	Follow Up Action
1	3 Glenview Court	Vacant Site	New tree to be planted
2	4 Glenview Court	Vacant Site	New tree to be planted
3	1/12 Glenview Court	Vacant Site	New tree to be planted
4	13 Glenview Court	Vacant Site	New tree to be planted

Street Overview

The map below details the removals, replacements and infill plantings. All other trees have been assessed as having more than two years' useful life and will be retained.

Street Overview Legend


-  Tree to be Removed and Replaced
-  New Tree
-  Tree Removed with No Replacement



Proposed Tree Species Options

Council's Street Tree Strategy team has created three (3) options to choose from using the most appropriate species for the location.

Option 1 – Single species (both sides of the road)

<i>Corymbia citriodora</i> 'Scentuous' (Dwarf Scented Lemon Gum)	
	<p>This is a slightly narrow domed tree that doesn't shed its branches. It has a smooth trunk that may be slightly mottled. Leaves are narrow and highly aromatic when crushed, smelling strongly of lemon. This tree features lovely cream-coloured flowers in summer.</p>
	<p>Mature Size</p> <p>Height x Width (m): 7m x 3m</p> <p>Form: Oval</p>

Option 2 – Single species (both sides of the road)

Callistemon viminalis (Weeping Bottle Brush)



This is a pretty bird-attracting tree with a heavy crown due to the profusion of brilliant red flowers in spring and summer. It is the weight of these flowers that gives it a pendulous habit.

Mature Size
Height x Width (m): 6-8m x 6-8m
Form: Round

Option 3 – Single species (both sides of the road)

<i>Acer campestre</i> 'Elsrijk' (Elsrijk Maple)	
	<p>A small tree with a dense round canopy and a somewhat corky bark. Small leaves with rounded lobes, dark green in summer, which turn a beautiful clear yellow in the autumn. Green inconspicuous flowers from September to October. Paired samaras spread throughout the tree and hang in clusters well into winter.</p>
	<p>Mature Size</p> <p>Height x Width (m): 7m x 3 m</p> <p>Form: Oval</p>