


Tree Removals

The table below lists details of the trees to be removed, including tree location, tree species and condition assessment. For further location details, please refer to the street map outlining all removals, replacements and infill planting. Each tree also has had a reference tag attached that will correspond to the reference number below for on-site identification.

Ref No.	Street Address	Assessment Outcome	Follow Up Action	Current Tree Species	Tree Condition Assessment (*ULE <2 Years)	Tree Image
	192 Hansworth Street	Tree to be removed	Replacement tree to be planted	<i>Agonis flexuosa</i>	Significant split in the trunk from previous branch failure.	
	1 Locarno Court (In Hansworth Street)	Tree to be removed	Replacement tree to be planted	<i>Callistemon</i>	Significant decay in trunk.	

Infill Planting Locations

The table below lists details of the locations where trees will be planted in currently vacant sites along Hansworth Street, Mulgrave. For further location details, please refer to the street map outlining all removals, replacements and infill planting.




No.	Street Address	Assessment Outcome	Follow Up Action
1	182 Hansworth Street	Vacant Site	New tree to be planted
2	184 Hansworth Street	Vacant Site	New tree to be planted
3	202 Hansworth Street	Vacant Site	New tree to be planted
4	208 Hansworth Street	Vacant Site	New tree to be planted
5	208 Hansworth Street	Vacant Site	New tree to be planted
6	210 Hansworth Street	Vacant Site	New tree to be planted
7	269 Police Road	Vacant Site	New tree to be planted
8	271 Police Road (Nature strip opposite 184 Hansworth Street)	Vacant Site	New tree to be planted
9	271 Police Road (Nature strip opposite 186 Hansworth Street)	Vacant Site	New tree to be planted
10	271 Police Road (Nature strip opposite 186 Hansworth Street)	Vacant Site	New tree to be planted
11	271 Police Road (Nature strip opposite 188 Hansworth Street)	Vacant Site	New tree to be planted
12	271 Police Road (Nature strip opposite 190 Hansworth Street)	Vacant Site	New tree to be planted
13	271 Police Road (Nature strip opposite 190 Hansworth Street)	Vacant Site	New tree to be planted
14	271 Police Road (Nature strip opposite 192 Hansworth Street)	Vacant Site	New tree to be planted
15	271 Police Road (Nature strip opposite 192 Hansworth Street)	Vacant Site	New tree to be planted
16	271 Police Road (Nature strip opposite 196 Hansworth Street)	Vacant Site	New tree to be planted

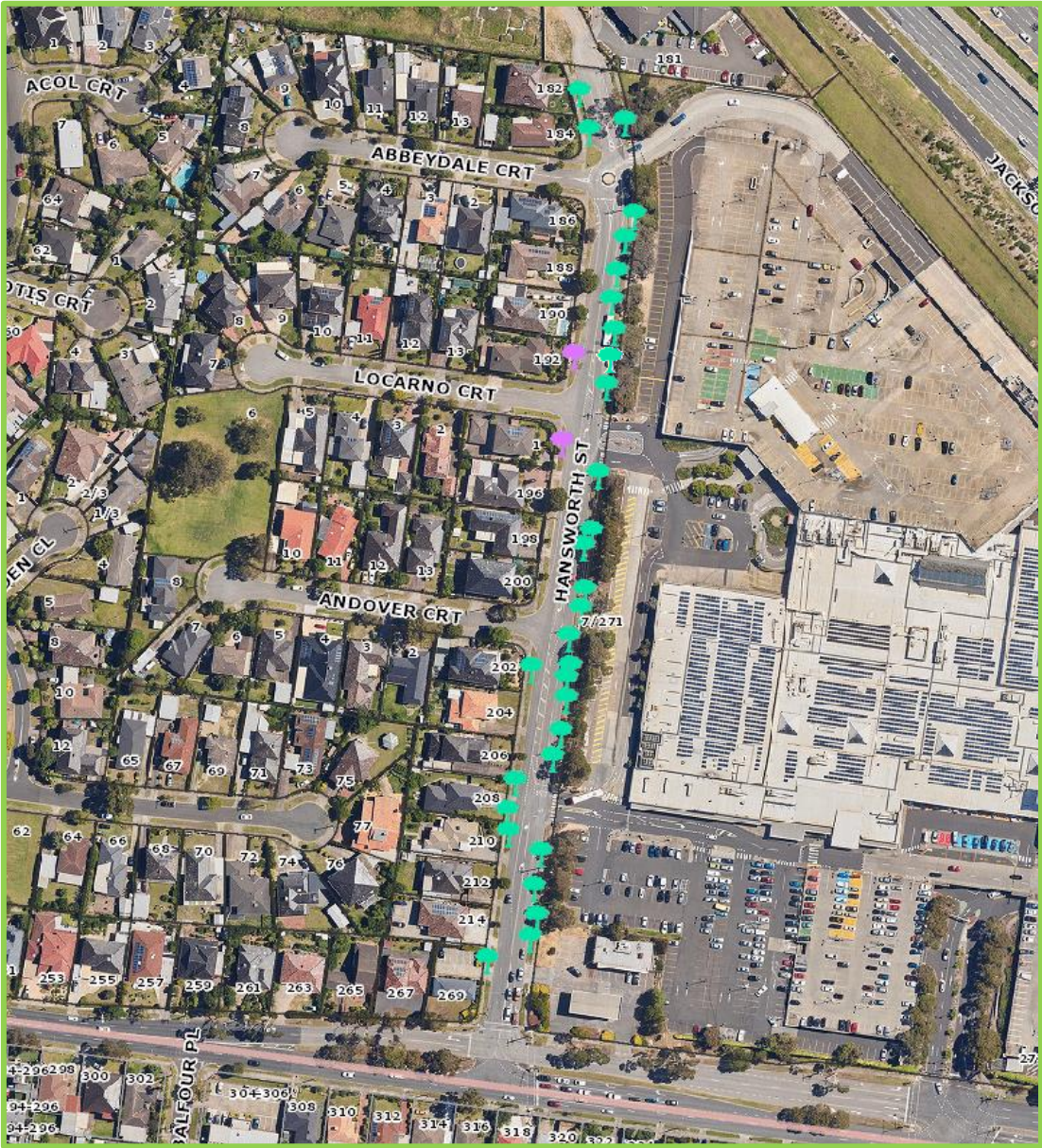
17	271 Police Road (Nature strip opposite 196 Hansworth Street)	Vacant Site	New tree to be planted
18	271 Police Road (Nature strip opposite 198 Hansworth Street)	Vacant Site	New tree to be planted
19	271 Police Road (Nature strip opposite 200 Hansworth Street)	Vacant Site	New tree to be planted
20	271 Police Road (Nature strip opposite 200 Hansworth Street)	Vacant Site	New tree to be planted
21	271 Police Road (Nature strip opposite 202 Hansworth Street)	Vacant Site	New tree to be planted
22	271 Police Road (Nature strip opposite 202 Hansworth Street)	Vacant Site	New tree to be planted
23	271 Police Road (Nature strip opposite 204 Hansworth Street)	Vacant Site	New tree to be planted
24	271 Police Road (Nature strip opposite 204 Hansworth Street)	Vacant Site	New tree to be planted
25	271 Police Road (Nature strip opposite 206 Hansworth Street)	Vacant Site	New tree to be planted
26	271 Police Road (Nature strip opposite 210 Hansworth Street)	Vacant Site	New tree to be planted
27	271 Police Road (Nature strip opposite 212 Hansworth Street)	Vacant Site	New tree to be planted
28	271 Police Road (Nature strip opposite 214 Hansworth Street)	Vacant Site	New tree to be planted
29	271 Police Road (Nature strip opposite 214 Hansworth Street)	Vacant Site	New tree to be planted
30	271 Police Road (Nature strip opposite Andover Court)	Vacant Site	New tree to be planted

Street Overview

The map below details the removals, replacements and infill plantings. All other trees have been assessed as having more than three years' useful life and will be retained.

Street Overview Legend


-  Tree to be Removed and Replaced
-  New Tree
-  Tree Removed with No Replacement



Proposed Tree Species Options

Council’s Street Tree Strategy team has created three options to choose from using the most appropriate species for the location.

Option 1 – Single species (both sides of the road)

<i>Carpinus betulus</i> ‘Fastigiata’ (Upright European Hornbeam)	
	<p>Densely conical, narrow growing deciduous tree. It features fine toothed green leaves through spring and Summer, turning yellow for autumn.</p>
<p>Mature Size</p> <p>Height x Width (m): 7m x 4m</p> <p>Form: Upright</p>	

Option 2 – Single species (both sides of the road)

<i>Magnolia grandiflora</i> ‘Teddy Bear’ (Teddy Bear Magnolia)	
	<p>Small evergreen tree. The leaves are glossy and dark green on top, and bronze underneath. It produces large white flowers from late spring to autumn.</p>
<p>Mature Size</p> <p>Height x Width (m): 4m x 3m</p> <p>Form: Upright, Compact</p>	

Option 3 – Single species (both sides of the road)

***Prunus cerasifera* 'Oakville Crimson Spire' (Prunus Crimson Spire)**



Small deciduous tree with richly coloured foliage, reddish brown, with white spring blossom.

Mature Size

Height x Width (m): **6m x 2m**

Form: **Upright, Compact**