




Tree Removals

The table below lists the details of the trees to be removed, including tree location, tree species and condition assessment. For further location details, please refer to the street map outlining all removals, replacements and infill planting. Alternatively, each tree has had a reference tag attached and these tags will correspond to the reference number below for on-site identification.

Ref No.	Street Address	Assessment Outcome	Follow Up Action	Current Tree Species	Tree Condition Assessment (*Useful Life Expectancy <2 Years)	Tree Image
20	3 Harrison Avenue	Tree to be removed	Replacement tree to be planted	<i>Agonis flexuosa</i>	Structural issues	
21	6 Harrison Avenue	Tree to be removed	Replacement tree to be planted	<i>Acer platanoides</i> <i>Crimson Sentry</i>	Re-shooting after broken off at base previously	
22	10 Harrison Avenue	Tree to be removed	Replacement tree to be planted	<i>Prunus cerasifera</i> <i>Nigra</i>	Decay present, reduced foliage vigour and density	

Ref No.	Street Address	Assessment Outcome	Follow Up Action	Current Tree Species	Tree Condition Assessment (*Useful Life Expectancy <2 Years)	Tree Image
23	11 Harrison Avenue	Tree to be removed	Replacement tree to be planted	<i>Acacia pendula</i>	75% vigour. 30% crown dieback	
24	14 Harrison Avenue	Tree to be removed	Replacement tree to be planted	<i>Acacia melanoxylon</i>	Dieback to 30% of crown. Decay and borer damage present	
25	19 Harrison Avenue	Tree to be removed	Replacement tree to be planted	<i>Prunus cerasifera Nigra</i>	Significant decay in trunk	
26	20 Harrison Avenue	Tree to be removed	Replacement tree to be planted	<i>Acacia pendula</i>	50% defoliated, poor vigour	

Ref No.	Street Address	Assessment Outcome	Follow Up Action	Current Tree Species	Tree Condition Assessment (*Useful Life Expectancy <2 Years)	Tree Image
27	35 Harrison Avenue	Tree to be removed	Replacement tree to be planted	<i>Fraxinus raywoodii</i>	75% foliage vigour and density	
28	39 Harrison Avenue	Tree to be removed	Replacement tree to be planted	<i>Fraxinus angustifolia</i>	Significant decay in main trunk. 50% dead canopy	
29	51 Harrison Avenue	Tree to be removed	Replacement tree to be planted	<i>Agonis flexuosa</i>	60% vigour and foliage density	
30	60 Harrison Avenue	Tree to be removed	Replacement tree to be planted	<i>Prunus cerasifera Nigra</i>	Useful Life Expectancy <2 Years	

Infill Planting Locations

The table below lists the details of the locations where trees will be planted in currently vacant sites along Harrison Avenue, Burwood. For further location details, please refer to the street map outlining all removals, replacements and infill planting.




No.	Street Address	Assessment Outcome	Follow Up Action
1	1 Harrison Avenue	Vacant Site	New tree to be planted
2	5 Harrison Avenue	Vacant Site	New tree to be planted
3	9 Harrison Avenue	Vacant Site	New tree to be planted
4	15 Harrison Avenue	Vacant Site	New tree to be planted
5	29 Harrison Avenue	Vacant Site	New tree to be planted
6	32 Harrison Avenue	Vacant Site	New tree to be planted
7	36 Harrison Avenue	Vacant Site	New tree to be planted
8	43 Harrison Avenue	Vacant Site	New tree to be planted
9	43 Harrison Avenue	Vacant Site	New tree to be planted
10	44 Harrison Avenue	Vacant Site	New tree to be planted
11	45 Harrison Avenue	Vacant Site	New tree to be planted
12	48 Harrison Avenue	Vacant Site	New tree to be planted
13	48 Harrison Avenue	Vacant Site	New tree to be planted
14	52 Harrison Avenue	Vacant Site	New tree to be planted
15	52 Harrison Avenue	Vacant Site	New tree to be planted
16	57 Harrison Avenue	Vacant Site	New tree to be planted

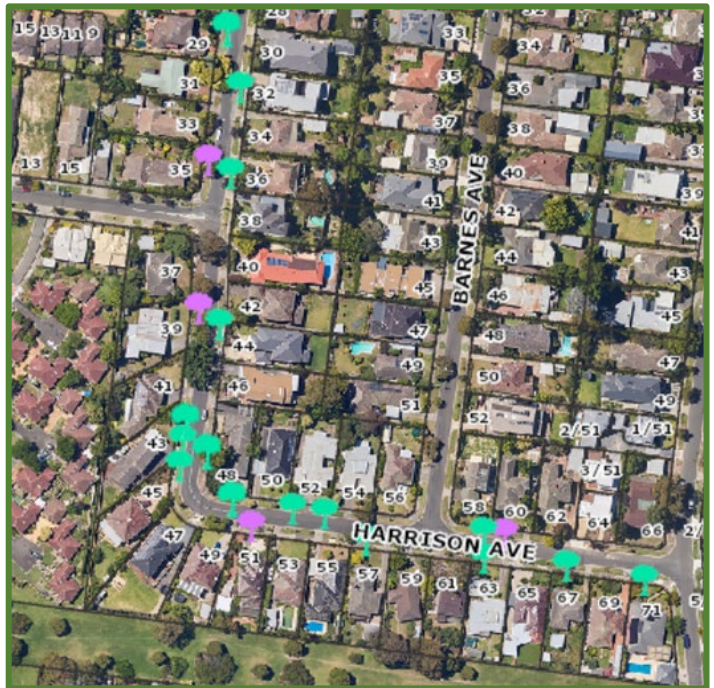
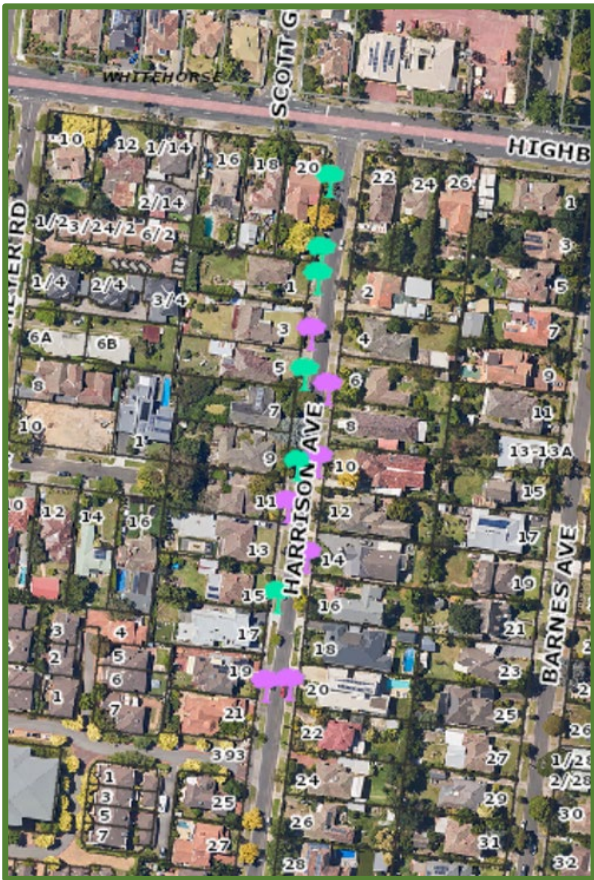
17	58 Harrison Avenue	Vacant Site	New tree to be planted
18	63 Harrison Avenue	Vacant Site	New tree to be planted
19	67 Harrison Avenue	Vacant Site	New tree to be planted
20	71 Harrison Avenue	Vacant Site	New tree to be planted
21	20 Highbury Road (In Harrison Avenue)	Vacant Site	New tree to be planted
22	20 Highbury Road (In Harrison Avenue)	Vacant Site	New tree to be planted

Street Overview

The map below details the removals, replacements and infill plantings. All other trees have been assessed as having more than two years' useful life and will be retained.

Street Overview Legend


-  Tree to be Removed and Replaced
-  New Tree
-  Tree Removed with No Replacement




Proposed Tree Species Options


Council's Street Tree Strategy team has created three (3) options to choose from using the most appropriate species for the location.

Option 1 – Single species (both sides of the road)


<i>Acer platanoides</i> 'Crimson Sentry' (Crimson Sentry Norway Maple)	
	<p>This is a flashy crimson foliated maple with dense upright branching. It has a compact growth habit with its large crimson leaves in summer, turning to gold and orange in autumn. Adds great colour contrast foliage. A small tree with greyish-black bark that is lightly textured.</p> <p>Mature Size</p> <p>Height x Width (m): 7m x 4m</p> <p>Form: Upright</p>

Option 2 – Combination of species planted in an alternating pattern on both sides of the road

<i>Lagerstroemia indica</i> x <i>L. fauriei</i> 'Tuscarora' (Tuscarora Crepe Myrtle)	
	<p>This deciduous tree has small oval shaped green leaves that turn a stunning reddish/orange in the autumn and beautiful coral red-crinkled flowers that are borne in late summer. The smooth bark is beige coloured with red-brown streaks.</p>
<p>Mature Size</p> <p>Height x Width (m): 4m x 5m</p> <p>Form: V-Shaped</p>	

<i>Fraxinus pennsylvanica</i> 'Urbanite' (Urbanite Green Ash)	
	<p>This tree is attractive and tough. It has a pyramid shape with a strong, upright trunk and develops grey-brown bark, which becomes deeply furrowed as it matures. Yellowish-green flowers are produced in spring and in autumn and dark green, glossy foliage turns a beautiful bronze colour before falling.</p>
<p>Mature Size</p> <p>Height x Width (m): 11m x 8m</p> <p>Form: Round</p>	

Option 3 – Single species (both sides of the road)

<i>Corymbia citriodora</i> 'Scentuous' (Dwarf Scented Lemon Gum)	
	<p>This is a slightly narrow domed tree that doesn't shed its branches. It has a smooth trunk that may be slightly mottled. Leaves are narrow and highly aromatic when crushed, smelling strongly of lemon. This tree features lovely cream-coloured flowers in summer.</p>
	<p>Mature Size</p> <p>Height x Width (m): 7m x 3m</p> <p>Form: Oval</p>