






Tree Removals

The table below lists the details of the trees to be removed, including tree location, tree species and condition assessment. For further location details, please refer to the street map outlining all removals, replacements and infill planting. Alternatively each tree has had a reference tag attached and these tags will correspond to the reference number below for on-site identification.

Ref No.	Street Address	Assessment Outcome	Follow Up Action	Current Tree Species	Tree Condition Assessment (*ULE <2 Years)	Tree Image
60	392 Highbury Road	Tree to be removed	Replacement tree to be planted	<i>Eucalyptus scoparia</i>	ULE <2 Years	
61	394 Highbury Road	Tree to be removed	Replacement tree to be planted	<i>Eucalyptus scoparia</i>	Unable to maintain acceptable electrical line and road clearance without significant structural branch pruning.	
62	372 Highbury Road	Tree to be removed	No replacement tree to be planted	<i>Eucalyptus scoparia</i>	Poor form from competing Melaleuca immediately adjacent	

63	492 Highbury Road	Tree to be removed	Replacement tree to be planted	<i>Melaleuca styphelioides</i>	ULE <2 Years	
64	10-26 Cinnabar Avenue	Tree to be removed	Replacement tree to be planted	<i>Eucalyptus scoparia</i>	Major wound in trunk	

Infill Planting Location

The table below lists the details of the locations where trees will be planted in currently vacant sites along Highbury Road, Mount Waverley. For further location details, please refer to the street map outlining all removals, replacements and infill planting.




No.	Street Address	Assessment Outcome	Follow Up Action
1	342 Highbury Road	Vacant Site	New tree to be planted
2	346 Highbury Road	Vacant Site	New tree to be planted
3	364 Highbury Road	Vacant Site	New tree to be planted
4	1/454 Highbury Road	Vacant Site	New tree to be planted
5	458 Highbury Road	Vacant Site	New tree to be planted
6	462 Highbury Road	Vacant Site	New tree to be planted
8	472 Highbury Road	Vacant Site	New tree to be planted

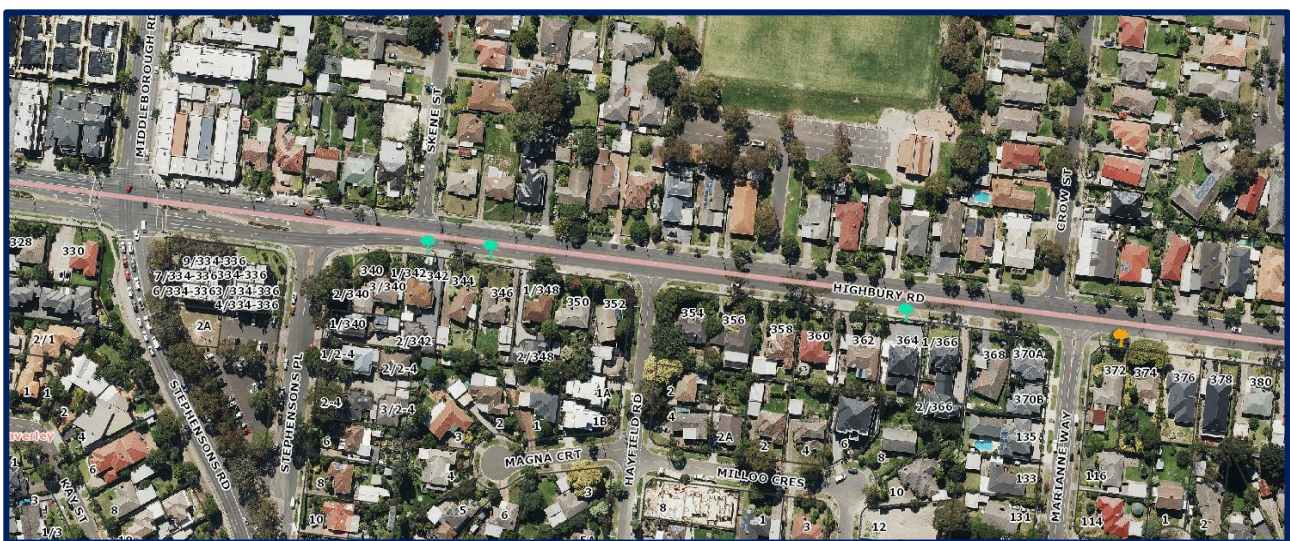
9	474 Highbury Road	Vacant Site	New tree to be planted
10	478 Highbury Road	Vacant Site	New tree to be planted
11	480 Highbury Road	Vacant Site	New tree to be planted
12	484 Highbury Road	Vacant Site	New tree to be planted
13	10-26 Cinnabar Avenue	Vacant Site	New tree to be planted
14	10-26 Cinnabar Avenue	Vacant Site	New tree to be planted
15	10-26 Cinnabar Avenue	Vacant Site	New tree to be planted

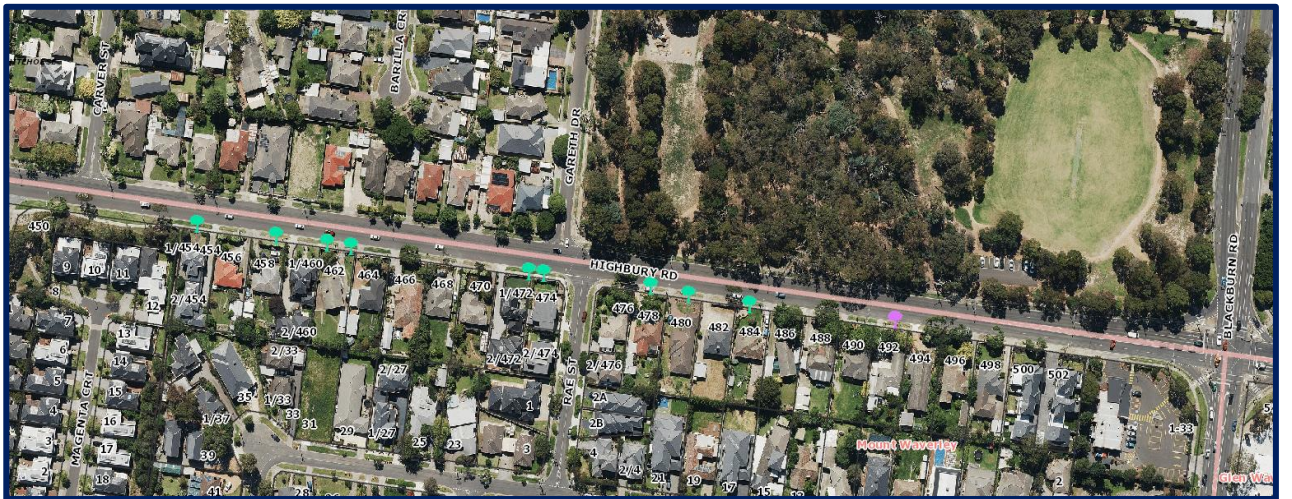
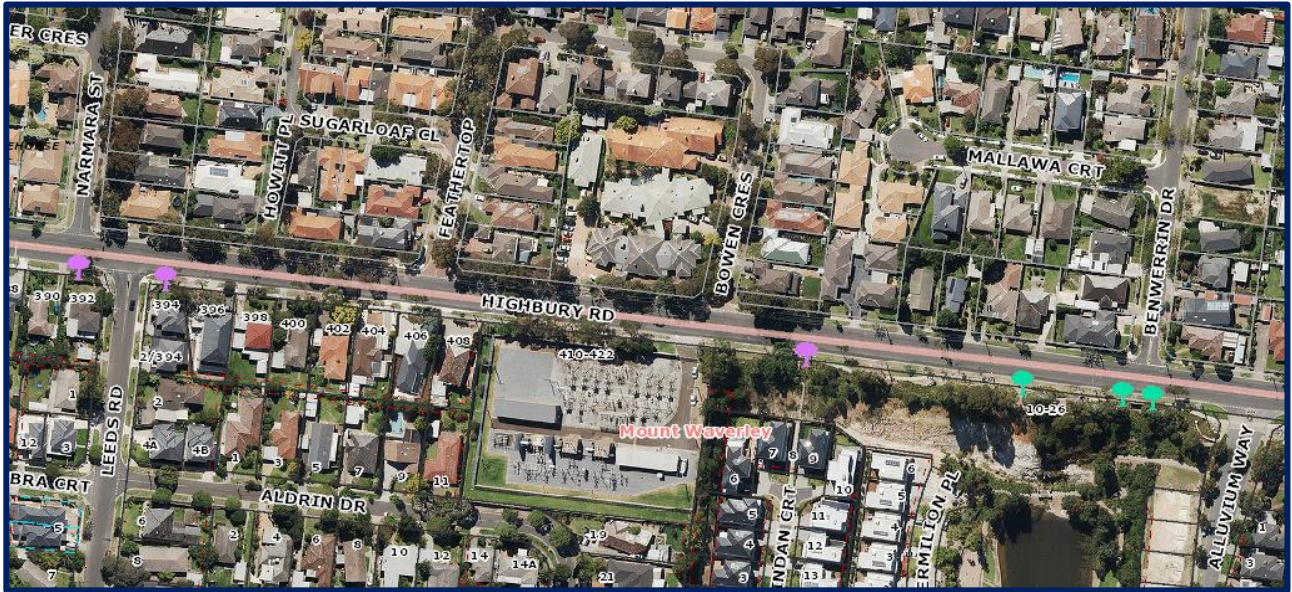
Street Overview

The map below details the removals, replacements and infill plantings. All other trees have been assessed as having more than 2 years useful life and will be retained.

Street Overview Legend

-  Tree to be Removed and Replaced
-  New Tree
-  Tree Removed with No Replacement





Tree Species

Council's Street Tree Strategy team has chosen an appropriate species for the location.

Acer truncatum x A. platanoides 'Warrenred' Pacific Sunset



Very attractive small to medium sized Maple with glossy, dark green, sharply-lobed leaves, which change to a multitude of yellows, oranges and reds in autumn. Moderately fast growing it is known to perform well in trying conditions. Flowers in late spring have little ornamental value. The size of this tree makes it an ideal selection for residential and urban landscapes such as carparks, parks and streetscapes.

Mature Size

Height x Width (m): 8-10 x 6 m

Form: Upright