

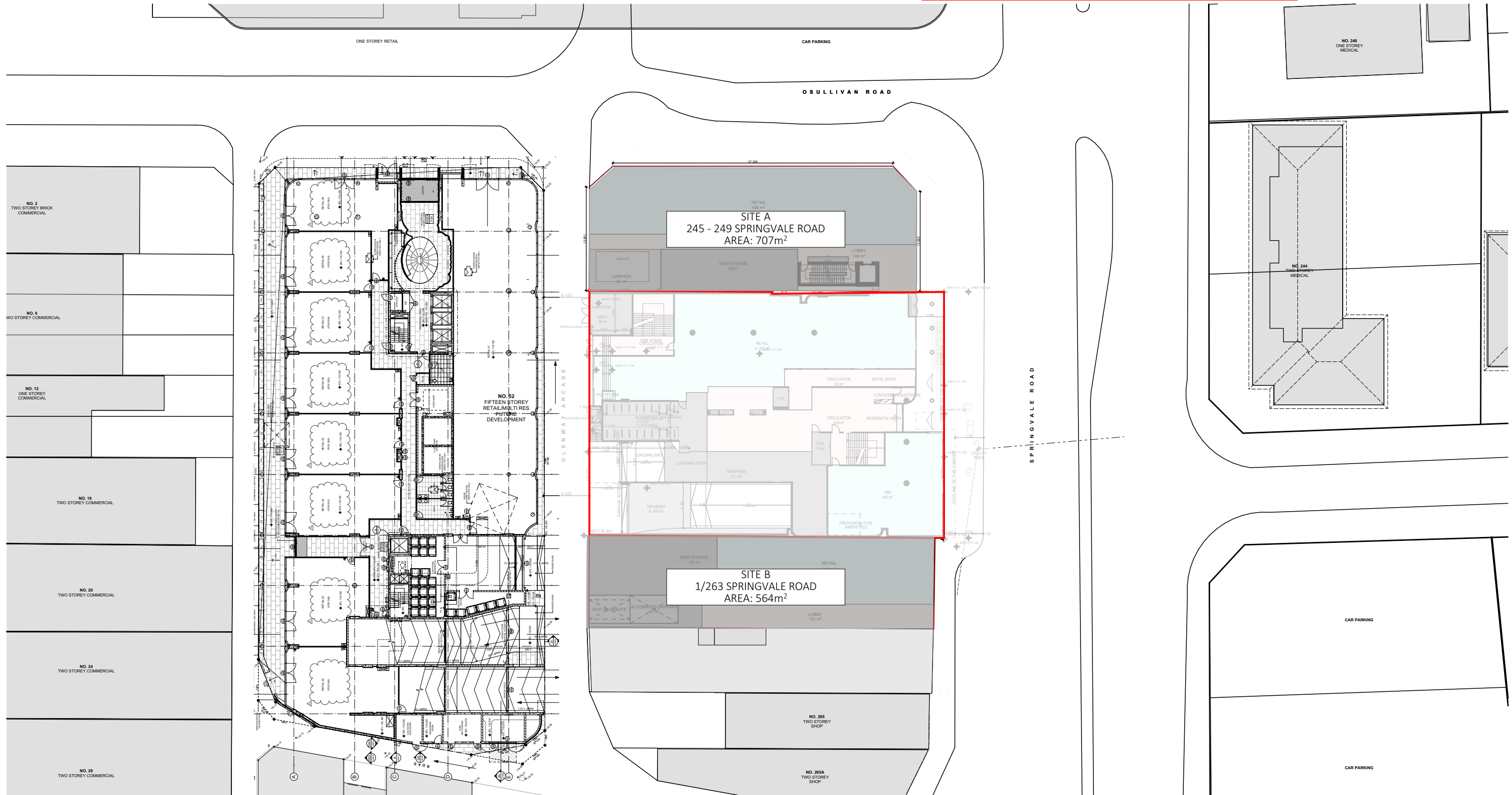
ADVERTISED COPY - CITY OF MONASH
This copied document is made available for the sole purpose of
enabling its consideration and review as part of a planning
process under the Planning and Environment Act.
The document must not be used for any purpose which may
breach copyright.

EQUITABLE DEVELOPMENT FEASIBILITY STUDY

245-247 SPRINGVALE RD
(SITE A - 2x OPTIONS)
&
1/263 SPRINGVALE RD
GLEN WAVERLEY
(SITE B - 2x OPTIONS)

ADVERTISED COPY - CITY OF MONASH
This copied document is made available for the sole purpose of enabling its consideration and review as part of a planning process under the Planning and Environment Act. The document must not be used for any purpose which may breach copyright.

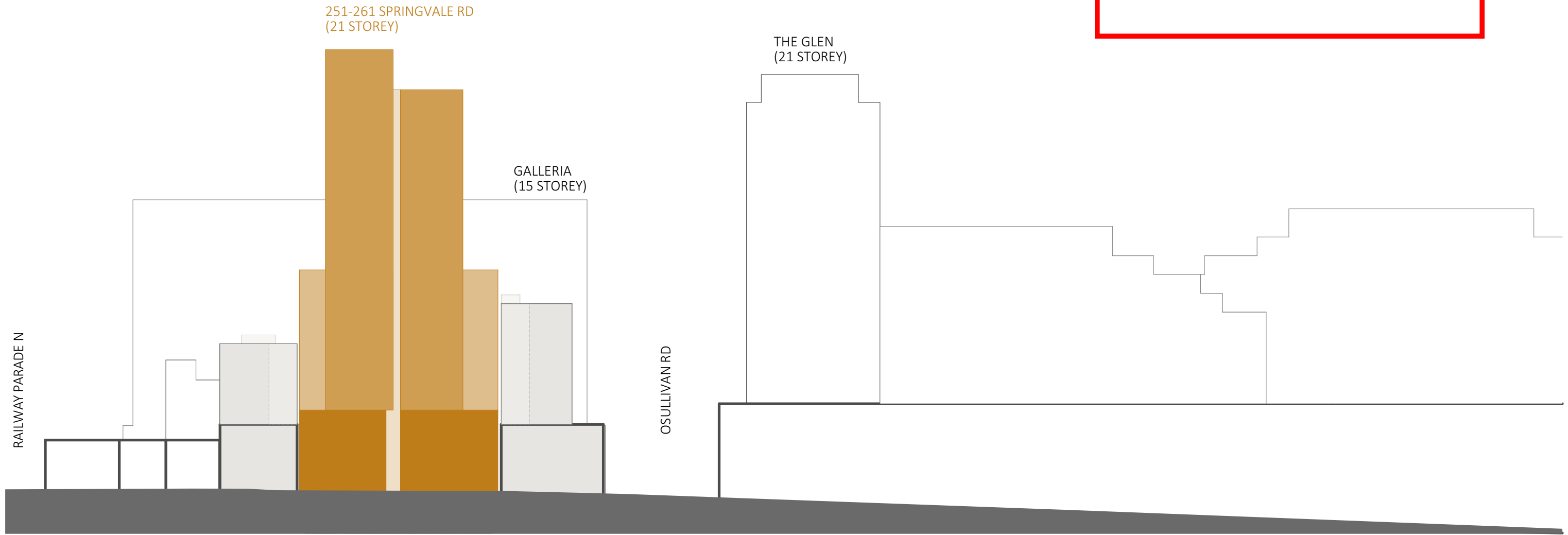
SITE LOCATION





ADVERTISED COPY - CITY OF MONASH
This copied document is made available for the sole purpose of enabling its consideration and review as part of a planning process under the Planning and Environment Act.
The document must not be used for any purpose which may breach copyright.

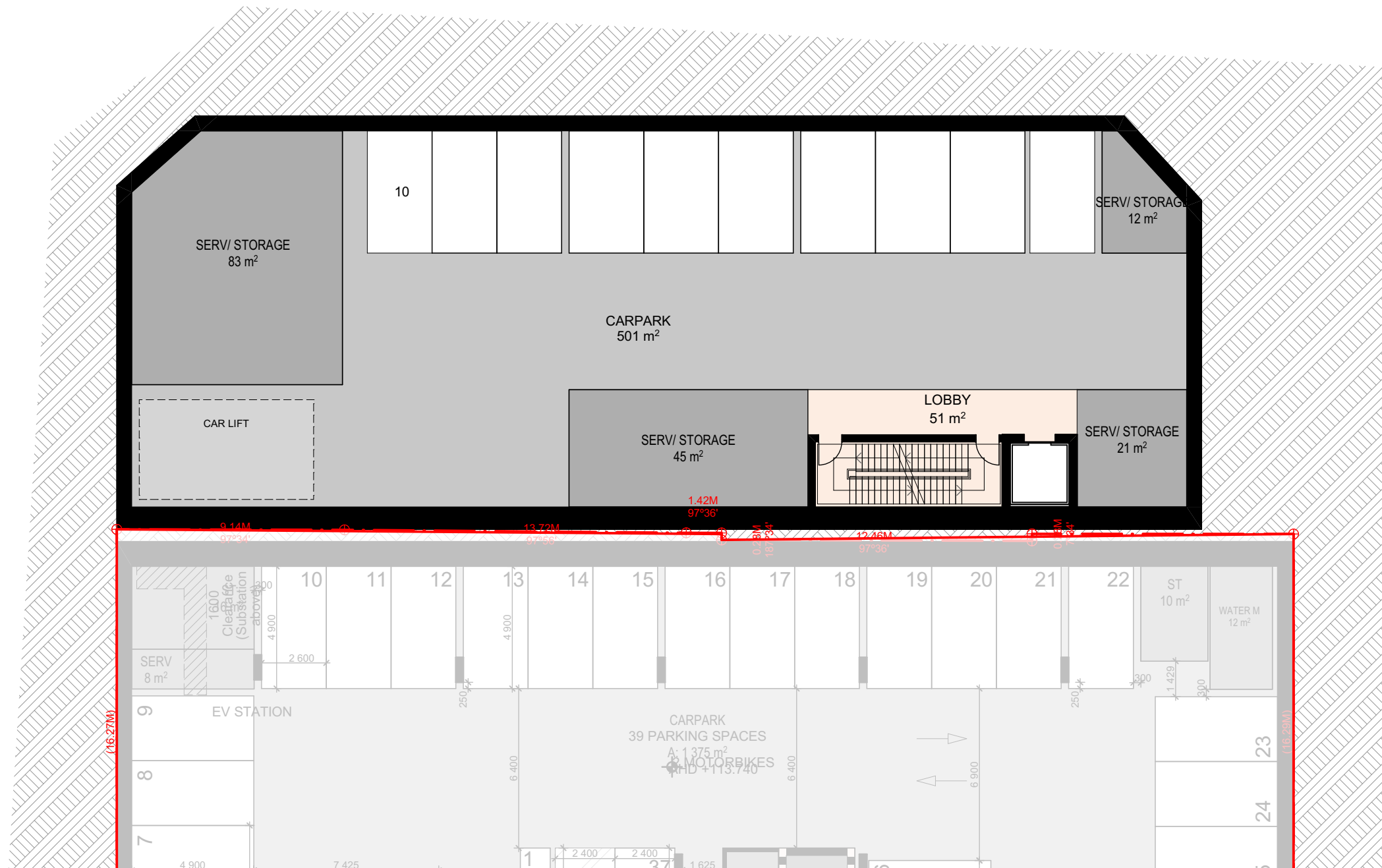
ADVERTISED COPY - CITY OF MONASH
 This copied document is made available for the sole purpose of enabling its consideration and review as part of a planning process under the Planning and Environment Act. The document must not be used for any purpose which may breach copyright.



ADVERTISED COPY - CITY OF MONASH
This copied document is made available for the sole purpose of enabling its consideration and review as part of a planning process under the Planning and Environment Act.
The document must not be used for any purpose which may breach copyright.

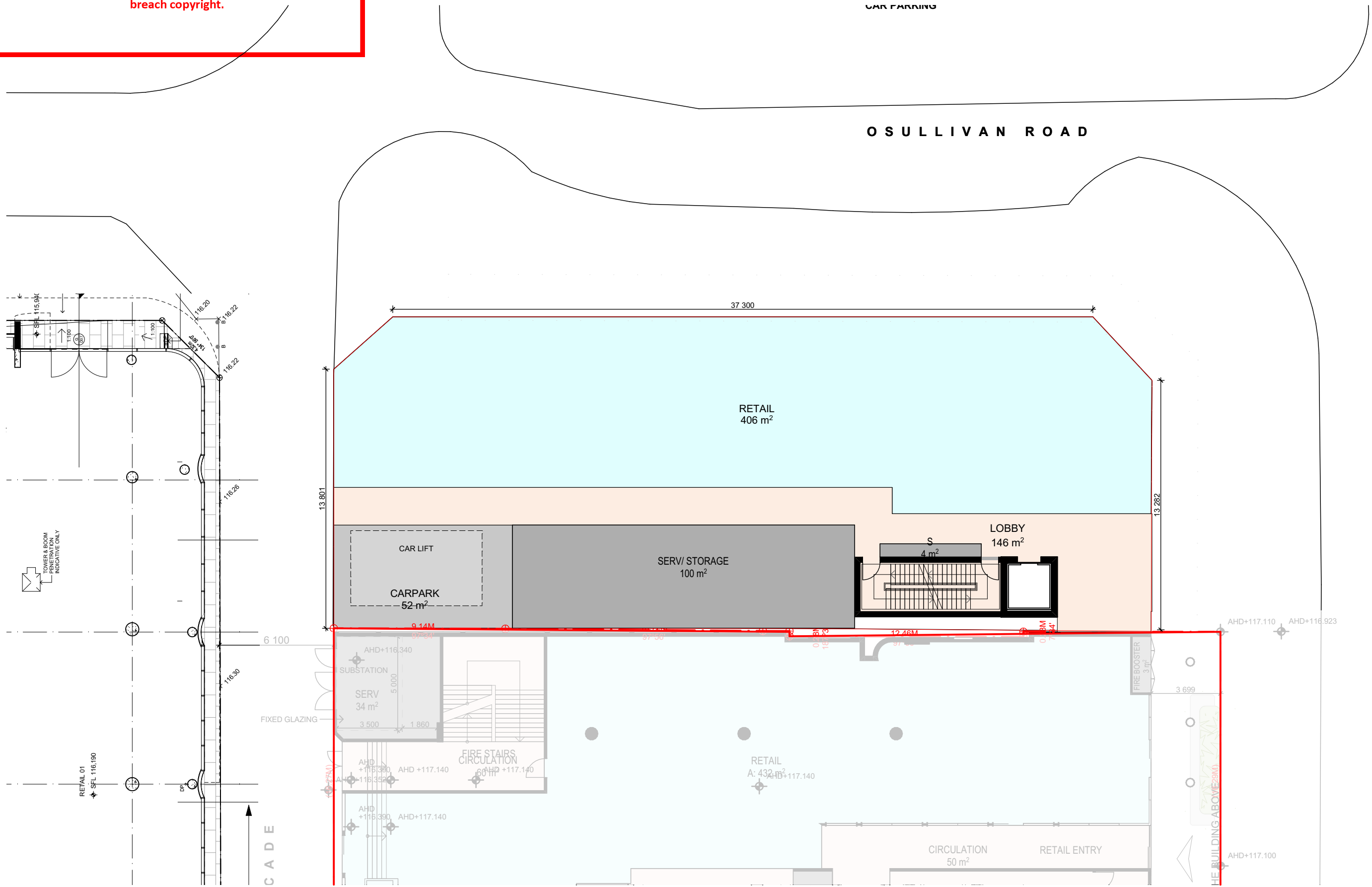
SITE A OPTION 1

ADVERTISED COPY - CITY OF MONASH
 This copied document is made available for the sole purpose of enabling its consideration and review as part of a planning process under the Planning and Environment Act. The document must not be used for any purpose which may breach copyright.



ADVERTISED COPY - CITY OF MONASH
This copied document is made available for the sole purpose of enabling its consideration and review as part of a planning process under the Planning and Environment Act. The document must not be used for any purpose which may breach copyright.

SITE A GROUND



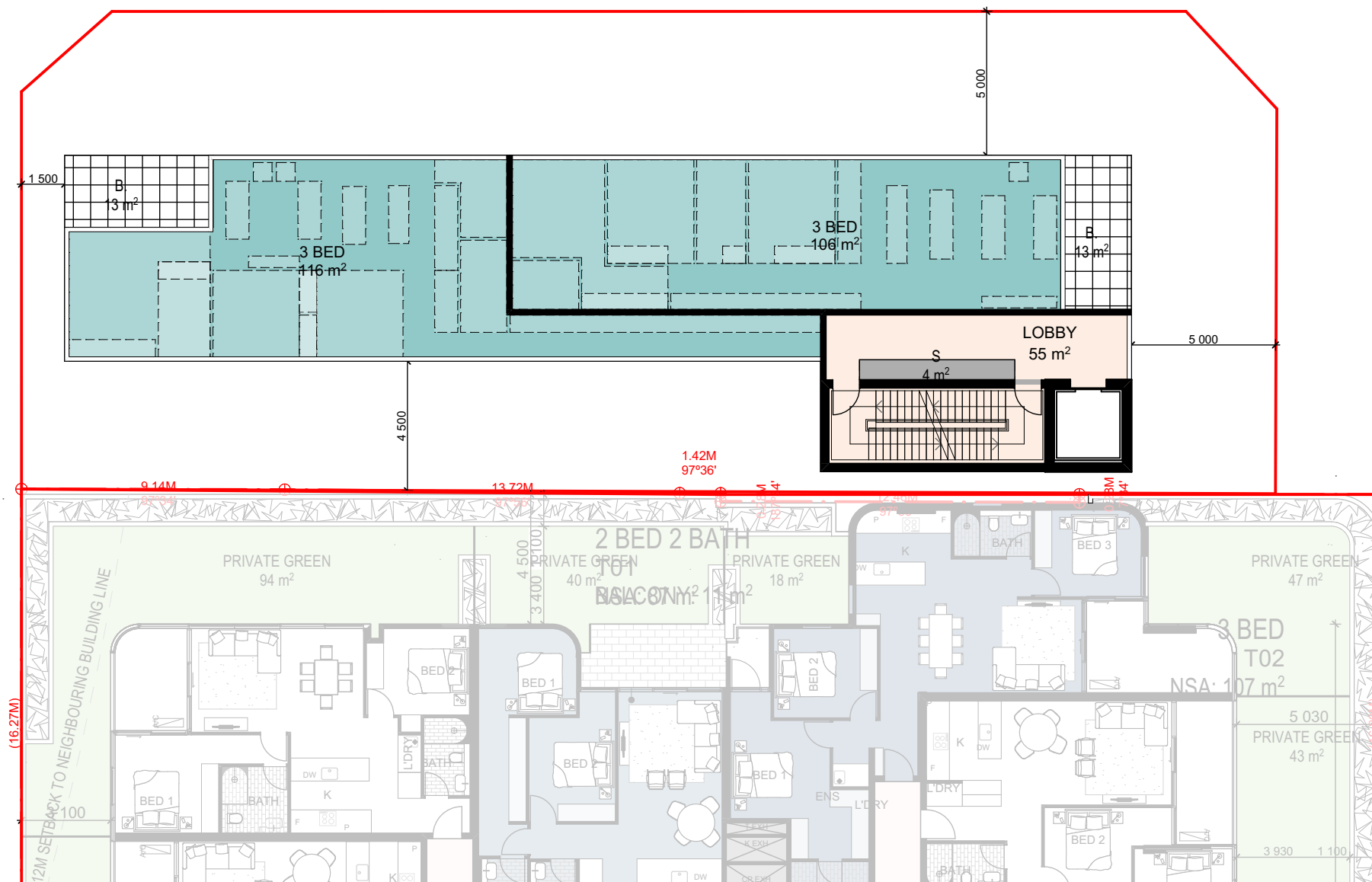
ADVERTISED COPY - CITY OF MONASH
 This copied document is made available for the sole purpose of enabling its consideration and review as part of a planning process under the Planning and Environment Act. The document must not be used for any purpose which may breach copyright.

O S U L L I V A N R O A D



ADVERTISED COPY - CITY OF MONASH
 This copied document is made available for the sole purpose of enabling its consideration and review as part of a planning process under the Planning and Environment Act. The document must not be used for any purpose which may breach copyright.

O S U L L I V A N R O A D

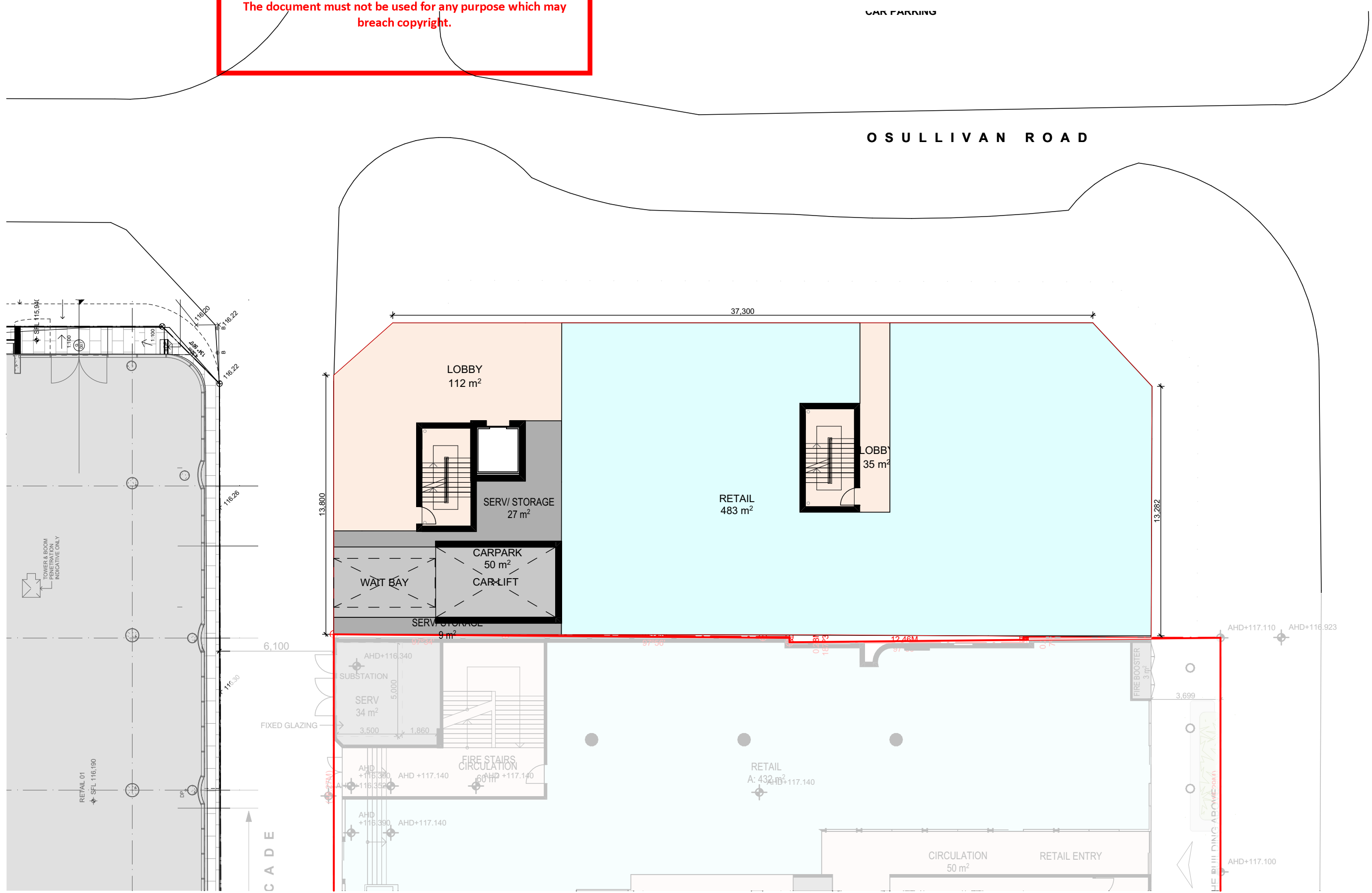


ADVERTISED COPY - CITY OF MONASH
This copied document is made available for the sole purpose of enabling its consideration and review as part of a planning process under the Planning and Environment Act.
The document must not be used for any purpose which may breach copyright.

SITE A OPTION 2

ADVERTISED COPY - CITY OF MONASH
This copied document is made available for the sole purpose of enabling its consideration and review as part of a planning process under the Planning and Environment Act. The document must not be used for any purpose which may breach copyright.

SITE A GROUND



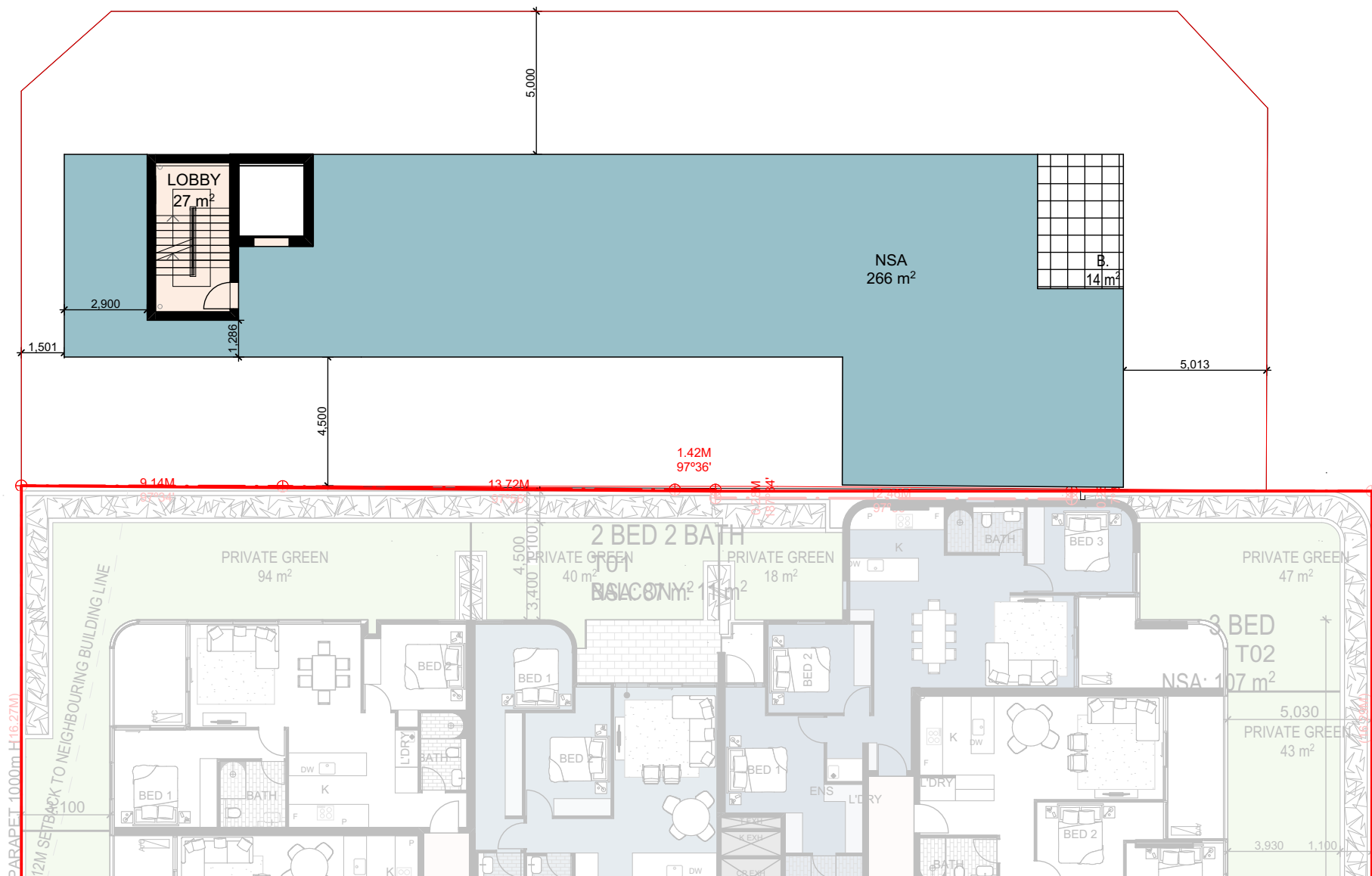
ADVERTISED COPY - CITY OF MONASH
 This copied document is made available for the sole purpose of enabling its consideration and review as part of a planning process under the Planning and Environment Act.
 The document must not be used for any purpose which may breach copyright.

O S U L L I V A N R O A D



O S U L L I V A N R O A D

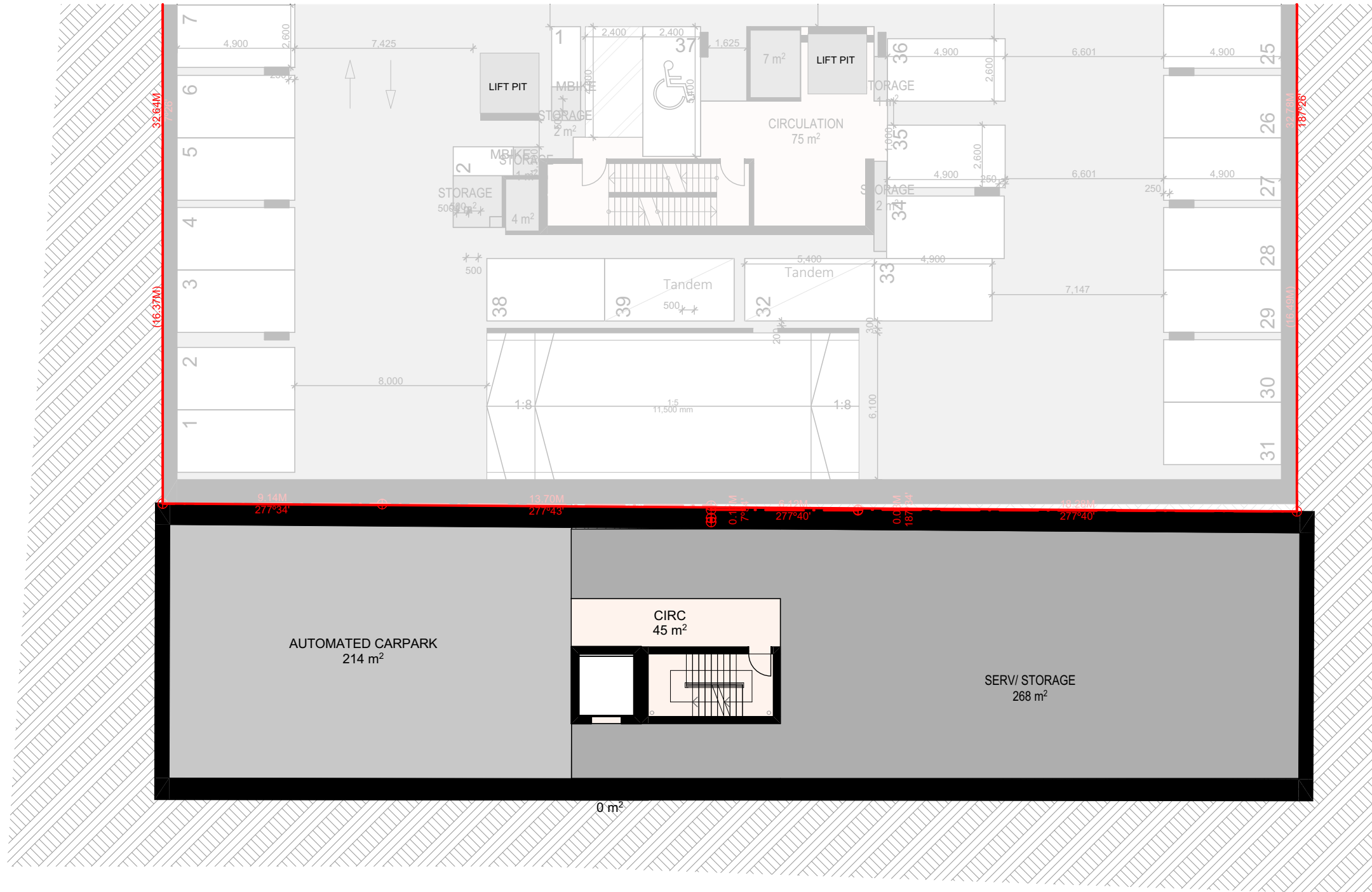
ADVERTISED COPY - CITY OF MONASH
 This copied document is made available for the sole purpose of enabling its consideration and review as part of a planning process under the Planning and Environment Act. The document must not be used for any purpose which may breach copyright.



ADVERTISED COPY - CITY OF MONASH
This copied document is made available for the sole purpose of enabling its consideration and review as part of a planning process under the Planning and Environment Act.
The document must not be used for any purpose which may breach copyright.

SITE B OPTION 1

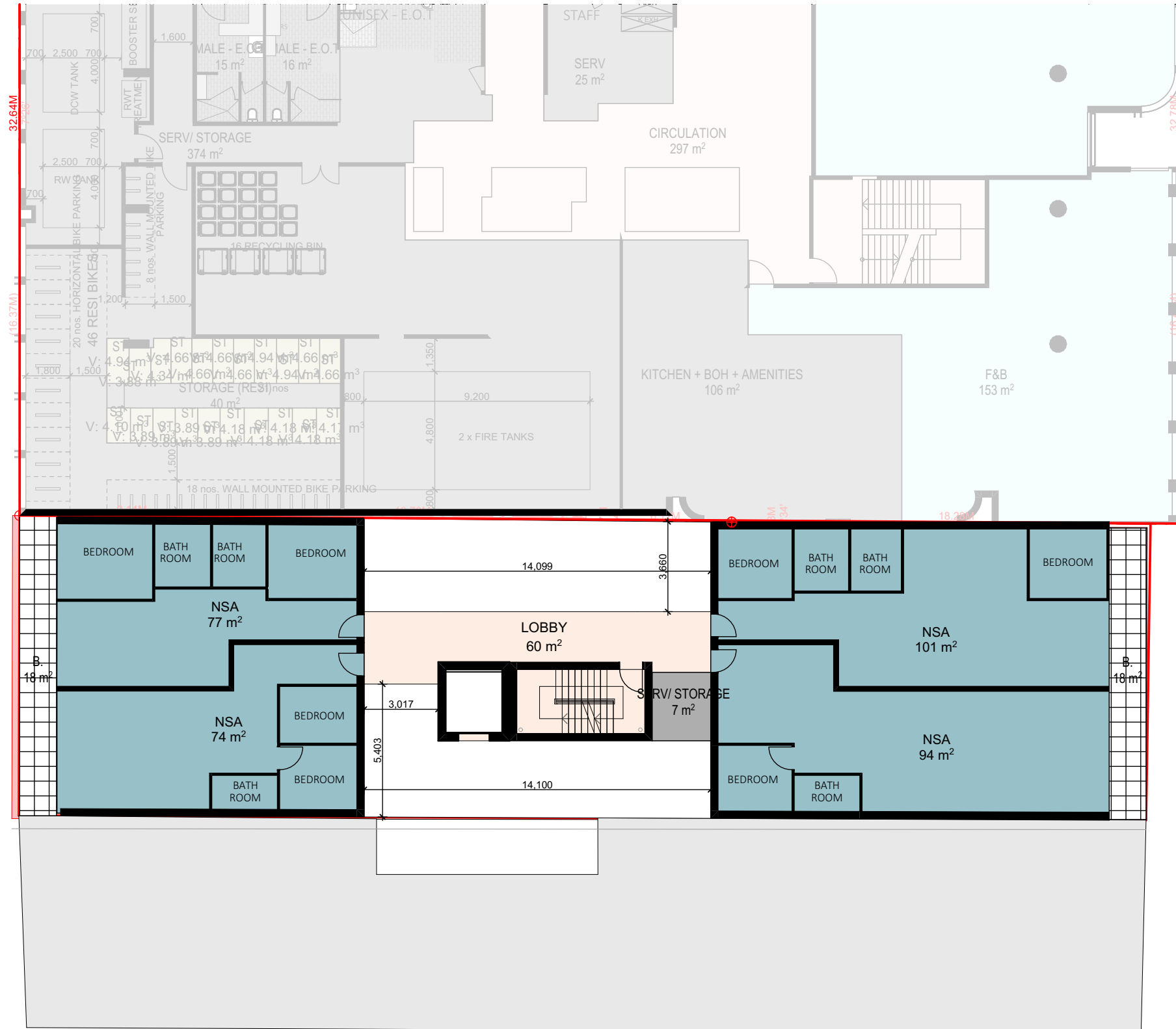
SITE B BASEMENT 01



ADVERTISED COPY - CITY OF MONASH
 This copied document is made available for the sole purpose of enabling its consideration and review as part of a planning process under the Planning and Environment Act. The document must not be used for any purpose which may breach copyright.

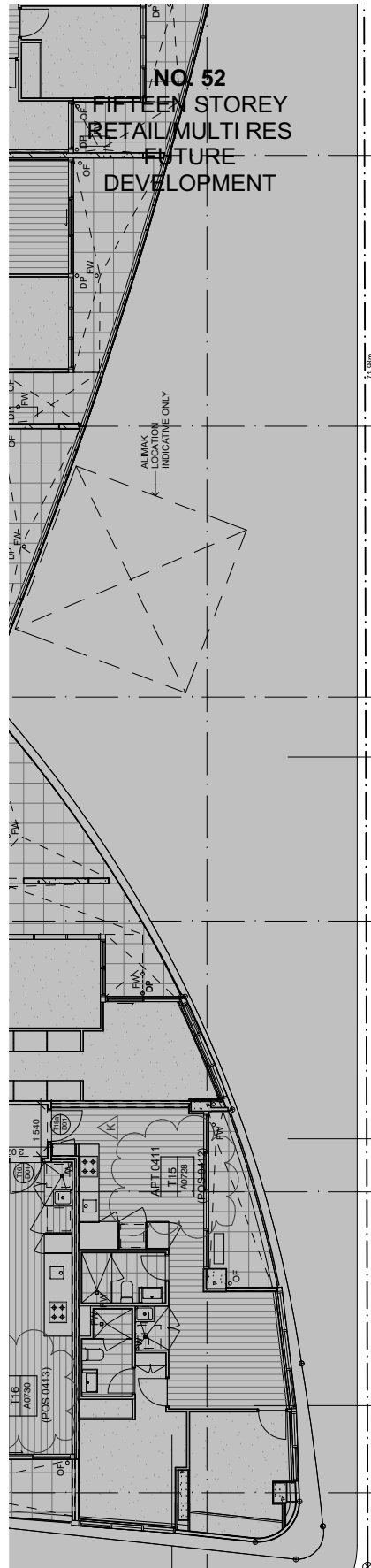


NO. 52
FIFTEEN STOREY
RETAIL/MULTI RES
FUTURE
DEVELOPMENT



ADVERTISED COPY - CITY OF MONASH
 This copied document is made available for the sole purpose of enabling its consideration and review as part of a planning process under the Planning and Environment Act. The document must not be used for any purpose which may breach copyright.





ADVERTISED COPY - CITY OF MONASH
 This copied document is made available for the sole purpose of enabling its consideration and review as part of a planning process under the Planning and Environment Act. The document must not be used for any purpose which may breach copyright.

Scale 1:200



ADVERTISED COPY - CITY OF MONASH
This copied document is made available for the sole purpose of enabling its consideration and review as part of a planning process under the Planning and Environment Act.
The document must not be used for any purpose which may breach copyright.

SITE B OPTION 2

