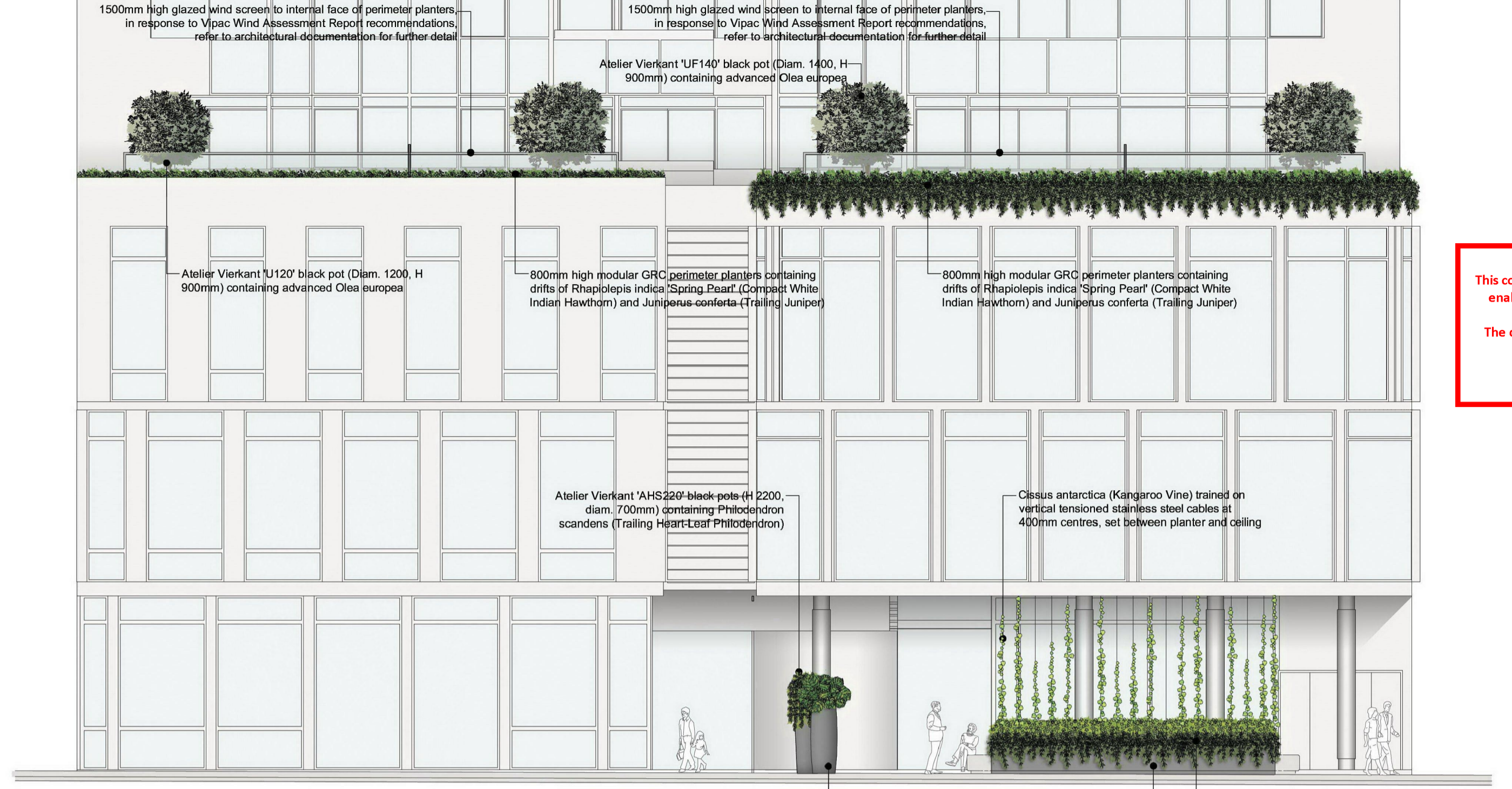
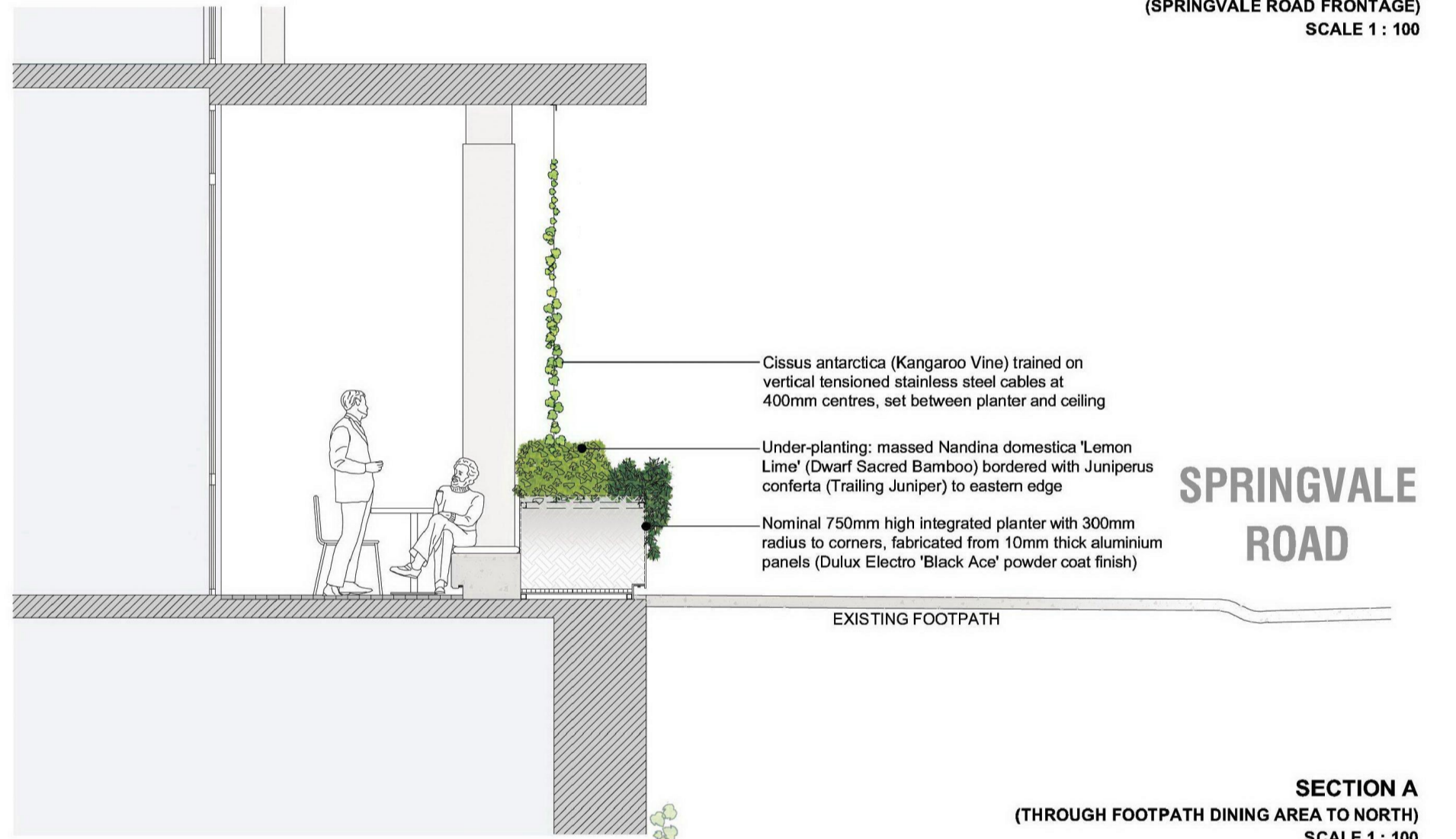


GROUND LEVEL - PARTIAL PLAN
(SPRINGVALE ROAD FRONTAGE)
SCALE 1 : 100



EASTERN ELEVATION
(SPRINGVALE ROAD FRONTAGE)
SCALE 1 : 100



SECTION A
(THROUGH FOOTPATH DINING AREA TO NORTH)
SCALE 1 : 100

PLANTING SCHEDULE

Symbol	Plant	Common Name	Pot Size	Quantity	Planted Height	Planted Width	Maintained Height	Maintained Width
C1	Cissus antarctica	Kangaroo Vine	20cm	17	0.50m	0.20m	3.00m	0.60m
J1	Juniperus conferta	Trailing Juniper	20cm	18	0.10m	0.20m	0.20m	0.80m
N1	Nandina domestica 'Lemon Lime'	Dwarf Sacred Bamboo	20cm	18	0.20m	0.20m	0.60m	0.50m
P1	Philodendron japonica 'Xanadu'	Dwarf Philodendron	20cm	06	0.20m	0.20m	0.50m	0.50m
P2	Philodendron scandens	Trailing Heart-Leaf Philodendron	20cm	06	0.15m	0.20m	0.30m	0.80m

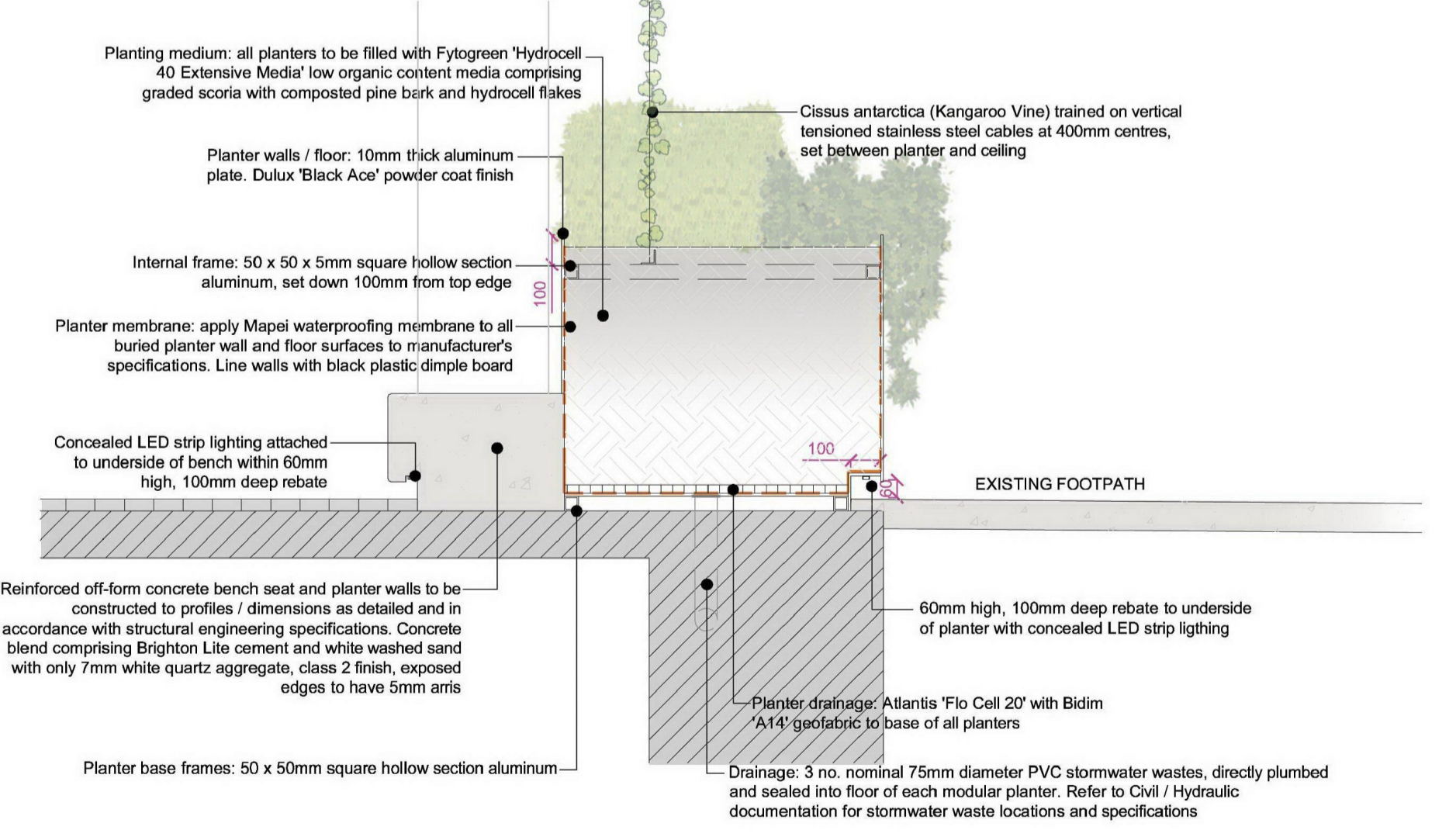
FINISHES SCHEDULE

Code	Finish	Description	Supplier
SB-L	Sawn Bluestone Paving - Large Format	Material: Victorian sawn bluestone paving, rubbed finish to remove saw marks, premium grade Format: 995 x 495 x 40mm pavers, stretcher-bond pattern Installation method: lay on mortar bed over reinforced concrete slabs with minimum 1 in 100 falls	Bamstone www.bamstone.com.au Phone: (03) 5568 2655
SB-S	Sawn Bluestone Paving - Sets	Material: Victorian sawn bluestone paving, rubbed finish to remove saw marks, premium grade Format: 100 x 100 x 40mm pavers, grid pattern Installation method: lay on mortar bed over reinforced concrete slabs with minimum 1 in 100 falls	Bamstone www.bamstone.com.au Phone: (03) 5568 2655
ISC	In-Situ Concrete	Concrete specification: 'Brighton Lite cement and white washed sand, 7mm quartz aggregate Structural details: nominal 32Mpa concrete, reinforced to Structural Engineer's specifications Finish: class 2 finish, 5mm radiuses to exposed edges, lightly sandblasted	Mentone Premix www.mentonepremix.com.au Phone: (03) 9584 2863
MC	Metal Cladding	Application: Metal Planters Material: 10mm thick aluminium plate Finish: Dulux 'Black Ace' powder coating	TBC

POT SCHEDULE

Code	Name	Size	Shape	Quantity	Colour	Supplier
AHS220	Atelier Vierkant 'AHS220'	500-700mm diameter, 2200mm high	[Image]	01	Black	Cosh Living www.coshliving.com.au
CBH180	Atelier Vierkant 'CBH180'	550mm diameter, 1800mm high	[Image]	01	Black	Cosh Living www.coshliving.com.au

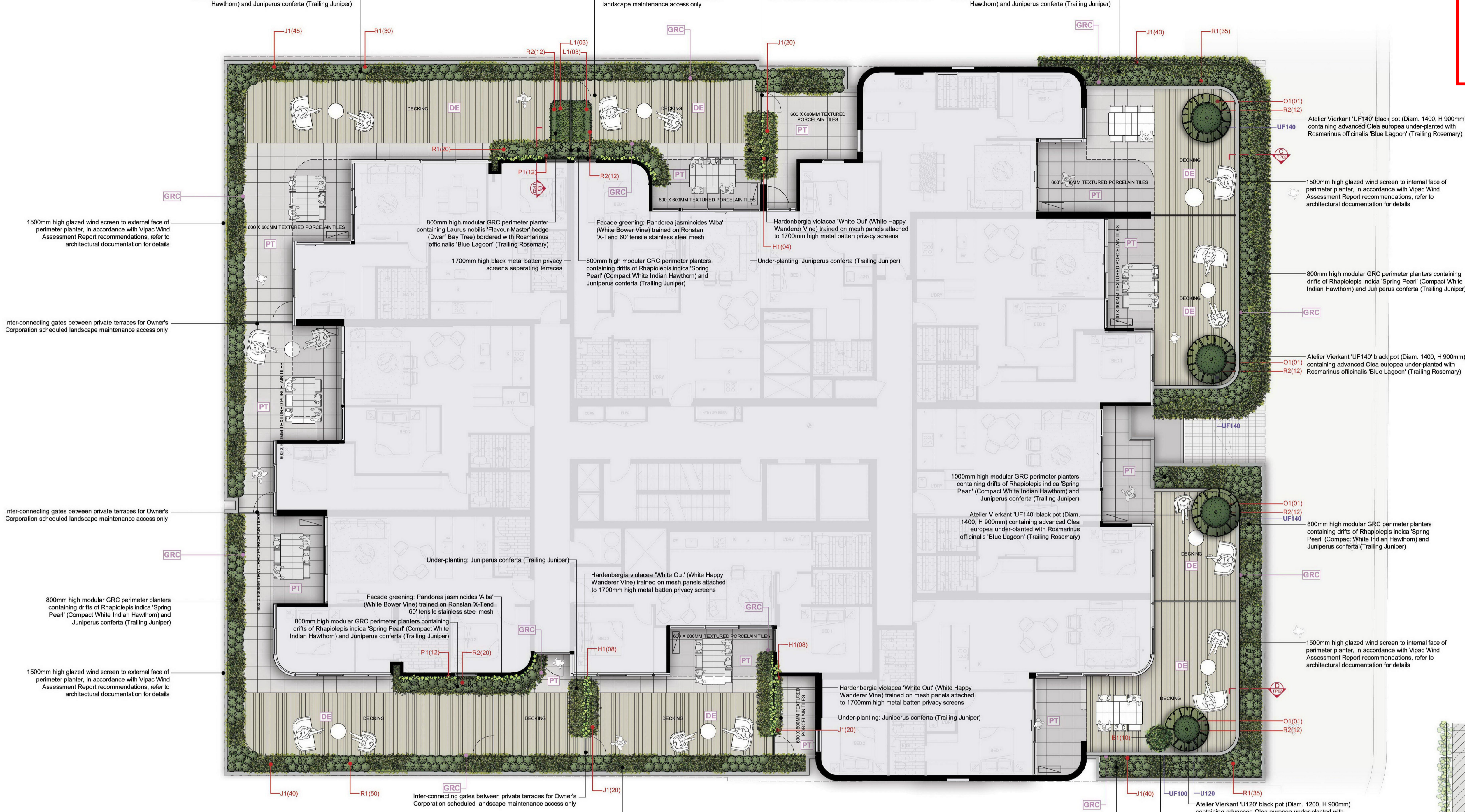
- LANDSCAPE SPECIFICATION - GARDEN BEDS & PLANTERS**
- TREE PIT / PLANTER EXCAVATION AND SOIL PREPARATION**
Planters: Cut-outs to be excavated to a depth of 700-1000mm. All soil material to be removed and appropriately disposed of by the developer. The exposed clay sub soil in the bottom of the planting hole is to be treated with Gypsum, prior to installation of planter soil.
 - PLANTER SOIL**
- Rootzone medium to be composed of a sand, loamy sand or coarse sandy loam soil of 1% organic matter by weight.
- The soil used for the rootzone medium is to have a saturated hydraulic conductivity of between 20 mm/hr and 50 mm/hr, determined using the methods set out in AS 4419 Soils for Landscape and Garden Use.
- The soil used shall have a pH of between 5.5 and 7.0 and a maximum electrical conductivity (before the addition of fertilizer materials) of 0.5 dS/m
- The soil is conform to all criteria for Natural Soils and Soil Blends in AS 4419 Soils for Landscape and Garden Use.
- This soil to be installed in 150mm lifts and compacted gently by foot or with one pass of a plate compactor.
 - TOP SOIL**
Surface 200mm is to have fine composted organic matter added at a rate of 20% by volume.
 - MULCH**
A 50 - 75mm thick black coarse mulch (>16mm particle size) to Australian Standard (AS4454-2012: Composts, Soil Conditioners and Mulches) shall be spread evenly over all garden areas after planting.
 - FERTILISING**
- Before delivery to the site the soil is to have the following fertilizer materials added:
Potassium nitrate 250g/m³
Ammonium nitrate 400g/m³
Superphosphate 400g/m³
Micromax Trace Element Mix 400g/m³
Gypsum 400g/m³
Magnesium sulphate 400g/m³
- Addition of a suitable fertilizer (eg. Osmocote 12- 14 month slow release fertilizer or equivalent) will be applied to all planted areas of the bed at 500g/m². Ideally this fertilizer to be applied to the soil surface prior to any mulch application; however, in the event that the mulch is already applied the fertiliser should be applied to the surface of the mulch.
 - PLANT MATERIAL**
To be vigorous, well established of good form and not root bound.
 - PLANTING**
Before planting, thoroughly water plants and planting areas. Water again immediately after planting.



SECTIONAL DETAIL B - FOOTPATH DINING PLANTER AND SEAT
SCALE 1 : 20

ADVERTISED COPY - CITY OF MONASH
This copied document is made available for the sole purpose of enabling its consideration and review as part of a planning process under the Planning and Environment Act. The document must not be used for any purpose which may breach copyright.

ADVERTISED COPY - CITY OF MONASH
This copied document is made available for the sole purpose of enabling its consideration and review as part of a planning process under the Planning and Environment Act. The document must not be used for any purpose which may breach copyright.



SPRINGVALE ROAD

PLANTING SCHEDULE

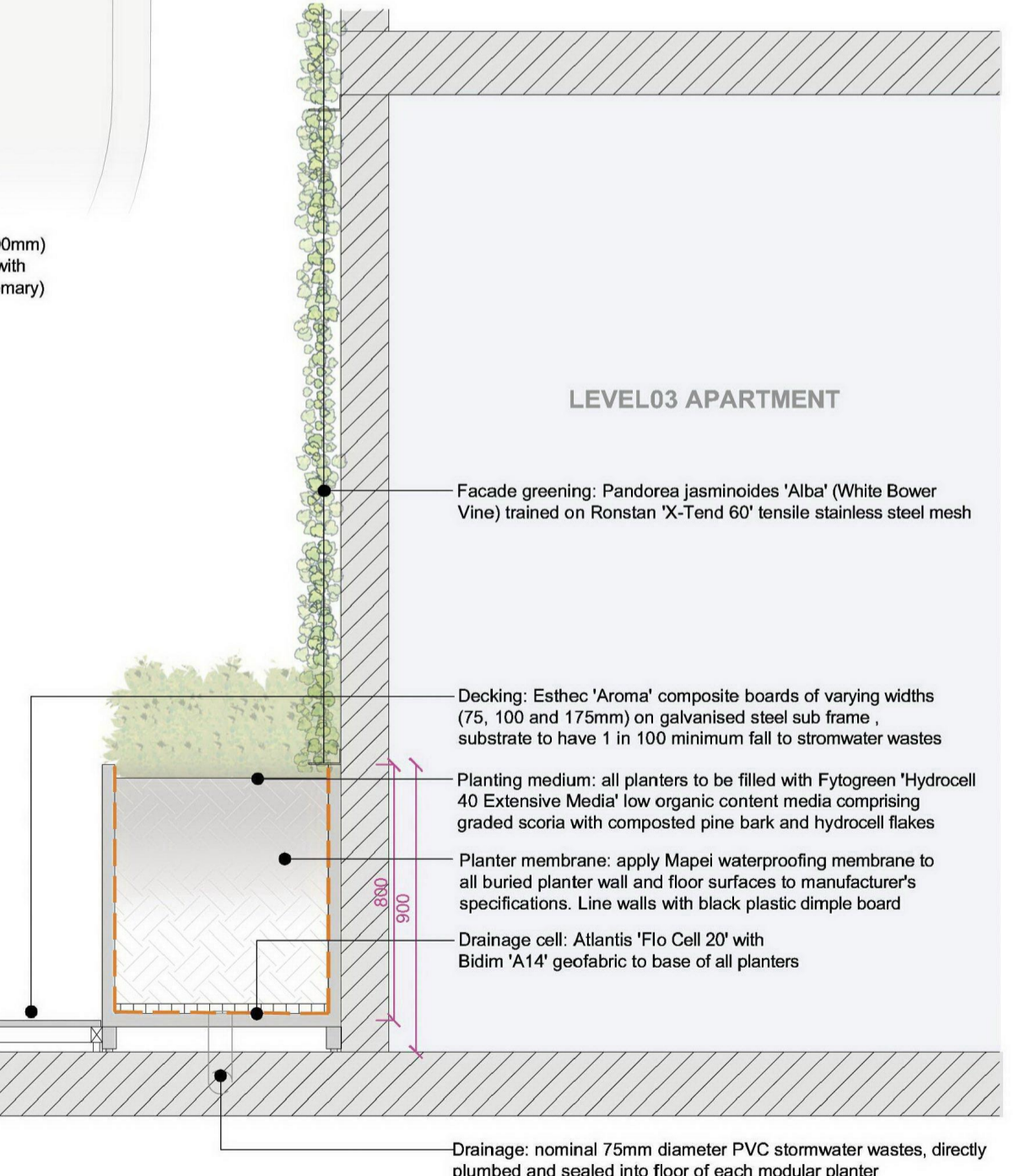
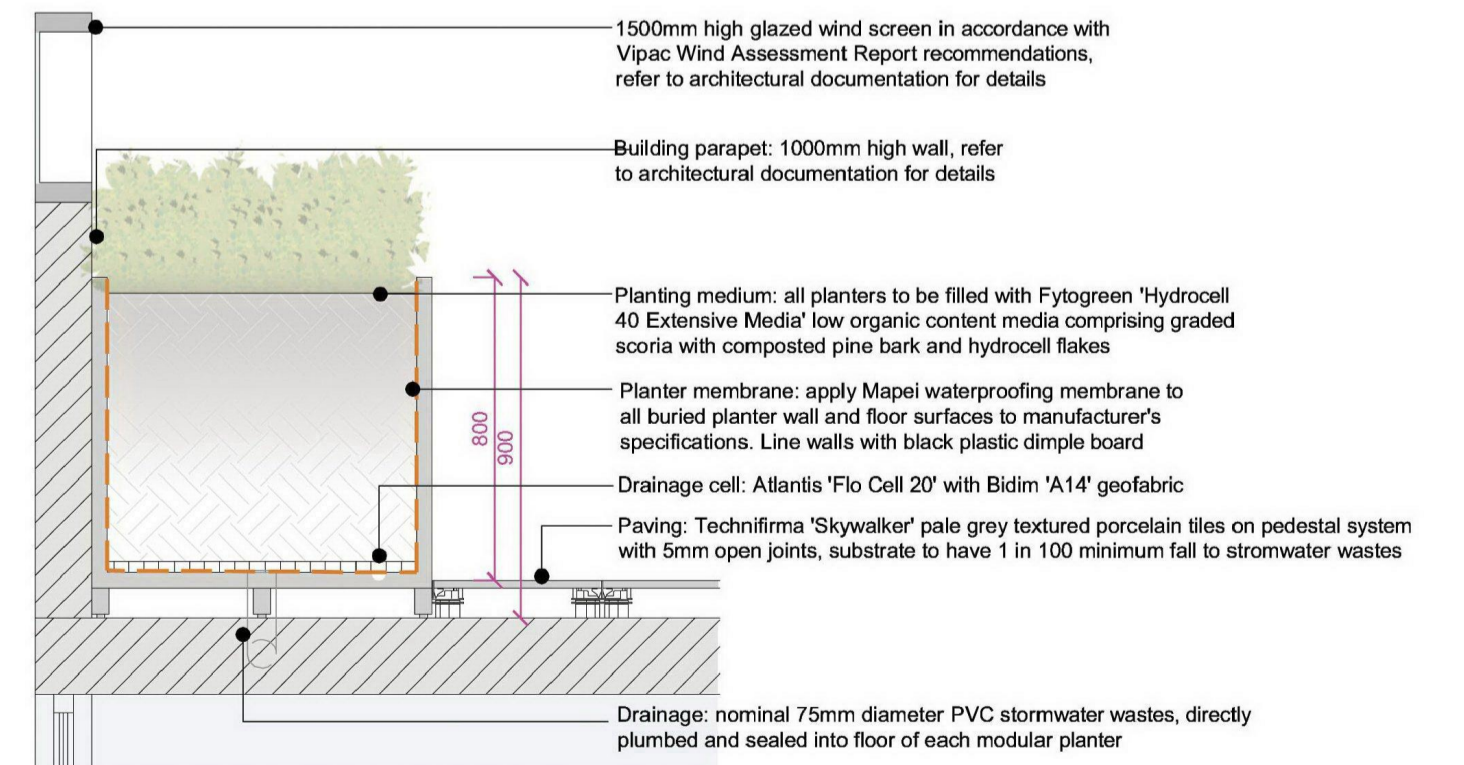
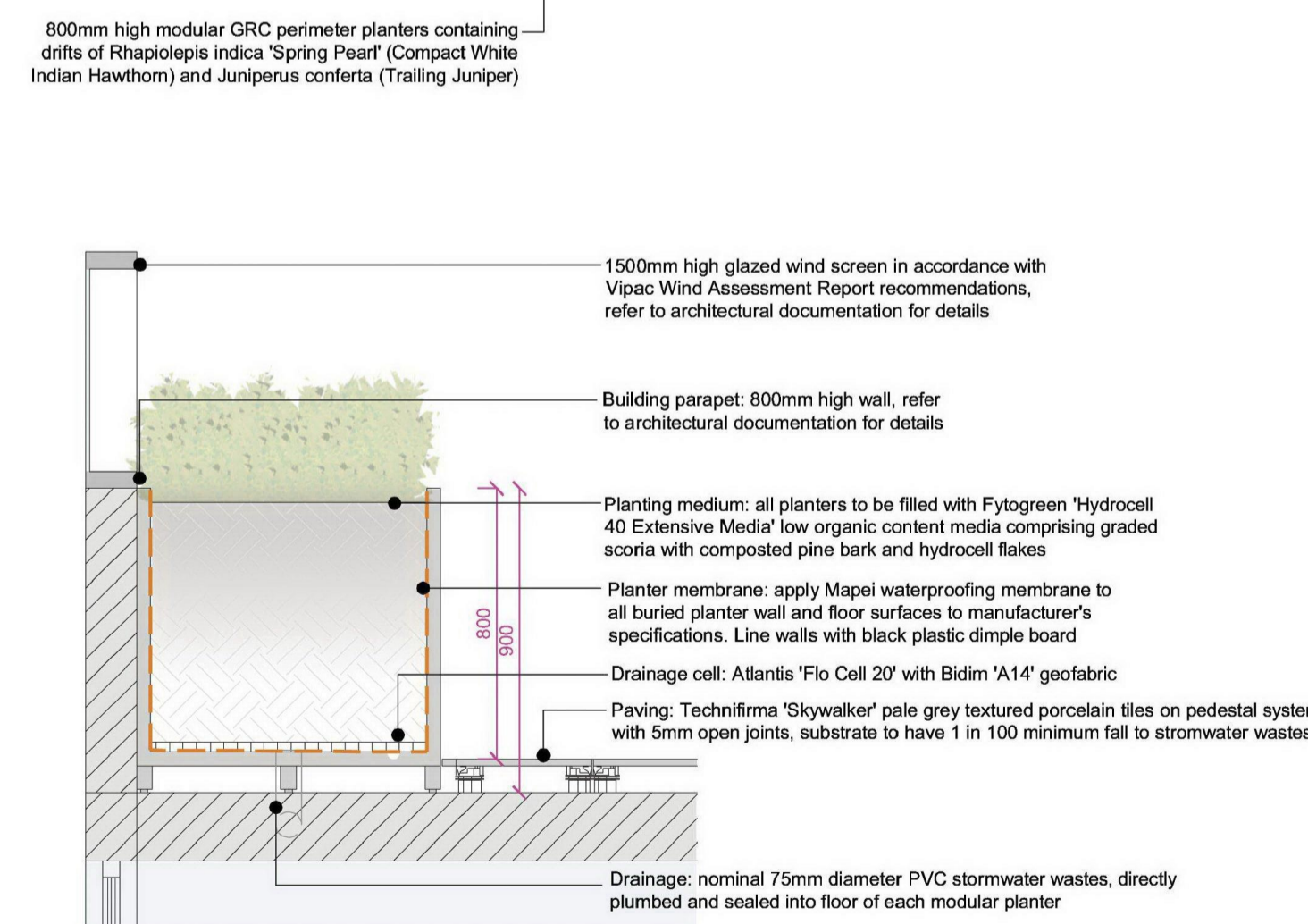
Symbol	Plant	Common Name	Pot Size	Quantity	Planted Height	Planted Width	Maintained Height	Maintained Width
B1	Bougainvillea glabra	Dwarf Bougainvillea	20cm	10	0.20m	0.20m	0.40m	0.80m
H1	Hardenbergia violacea 'White Out'	White Happy Wanderer Vine	20cm	20	0.50m	0.20m	1.50m	1.80m
J1	Juniperus conferta	Trailing Juniper	20cm	225	0.10m	0.20m	0.20m	0.80m
L1	Laurus nobilis 'Flavour Master'	Dwarf Bay Tree	40cm	05	1.00m	0.50m	1.80m	1.00m
O1	Olea europaea	Common Olive Tree	100lt	04	1.50m	1.20m	2.00m	2.00m
P1	Pandorea jasminoides 'Alba'	White Bower Vine	25cm	24	0.60m	0.30m	5.00m	2.00m
R1	Rhapiolepis indica 'Spring Pear'	Compact White Indian Hawthorn	20cm	170	0.20m	0.20m	0.50m	0.50m
R2	Rosmarinus officinalis 'Blue Lagoon'	Trailing Rosemary	20cm	92	0.20m	0.20m	0.20m	0.80m

FINISHES SCHEDULE

Code	Finish	Description	Supplier
PT	Porcelain Tiling	Material: Technifirma 'Skywalker' 20mm thick pale grey textured porcelain tiles. Format: 1200 x 600mm stretcher-bond (common areas), 600 x 600mm grid (private terraces). Installation method: lay on height-adjustable pedestals at 600mm centres with 4mm open joints.	Eco Outdoor www.ecooutdoor.com.au Phone: (03) 9427 9100
DE	Decking	Material: Esthec 'Aroma' composite timber boards with clip-in mounting system, installed to manufacturer's specifications. Format: varying board widths - 72.5, 100 and 175mm, 5mm gaps.	Dekton Oceania www.dekton.com.au
GRC	GRC Planters	Product: Satu Bumi 'CityScape' custom modular GRC planters. Finish: off-white, to match Brighton Lite / white washed sand in-situ concrete finish. Installation method: to be installed on height-adjustable pedestal system with 15mm diameter drainage holes at 600mm centres.	Satu Bumi www.satubumi.com.au Phone: (03) 5292 1001

POT SCHEDULE

Code	Name	Size	Shape	Quantity	Colour	Supplier
UF140	Atelier Vierkant 'UF140'	1400mm diameter, 960mm high		03	Black	Cosh Living www.coshliving.com.au
U120	Atelier Vierkant 'U120'	1200mm diameter, 920mm high		01	Black	Cosh Living www.coshliving.com.au
UF100	Atelier Vierkant 'UF100'	1000mm diameter, 680mm high		01	Black	Cosh Living www.coshliving.com.au



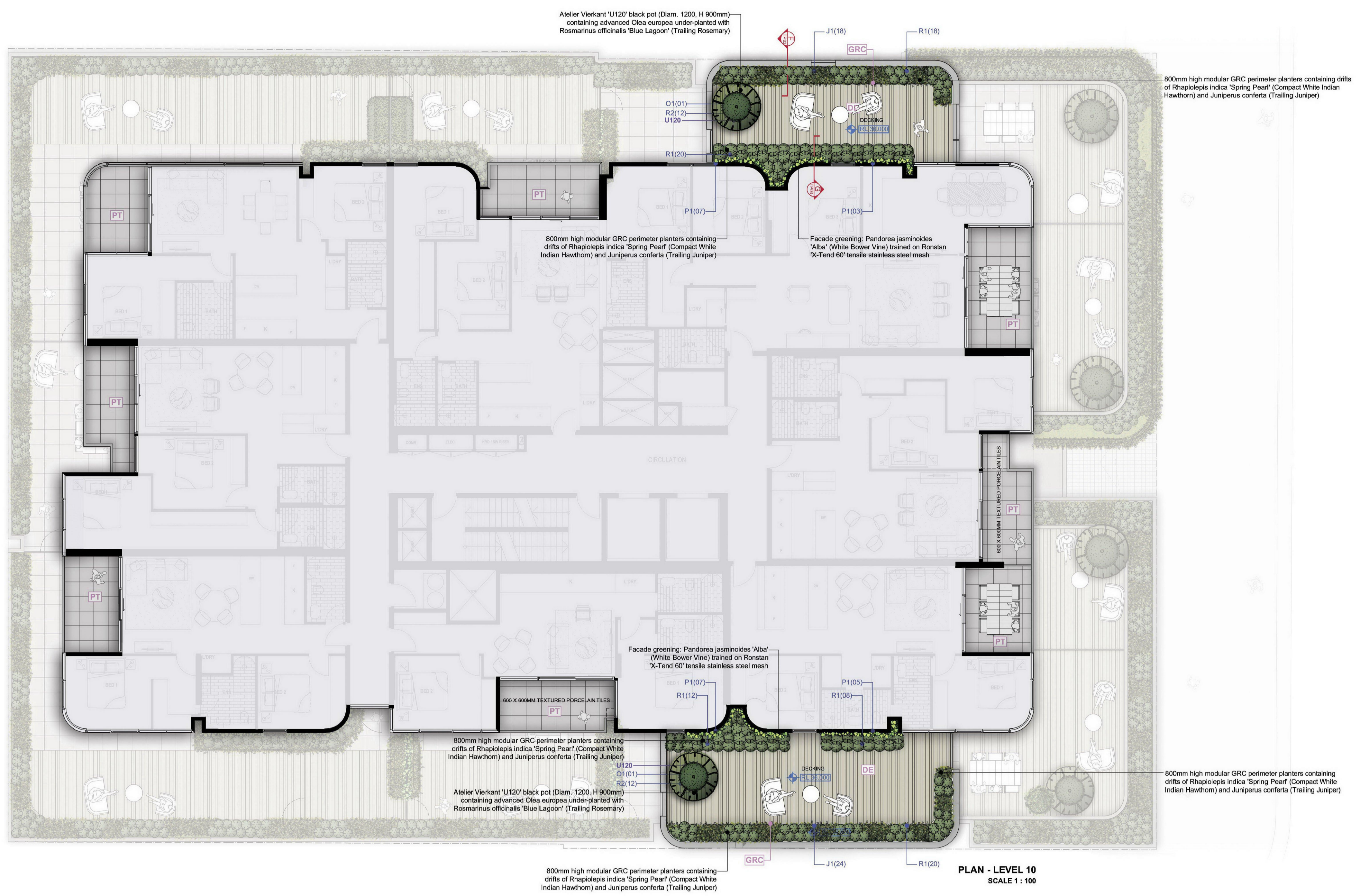
Jack Merlo
Design & Landscape
332A Toorak Road
South Yarra Victoria
3141 Australia
+61 3 9866 5550
info@jackmerlo.com
www.jackmerlo.com

CONDITIONS OF USE
This document may only be used as permitted by the terms of the Consultancy Agreement and for the purposes and stages of the Project for which it has been prepared and delivered by Jack Merlo; and by authorised persons who agree to these conditions.
Subject only to the Consultancy Agreement:
1. This document and all intellectual property rights in it remain the property of Jack Merlo and may not be changed, used, reproduced, provided or disclosed by or to any person without the written consent of Jack Merlo, and only then with clear identification of Jack Merlo as author and owner of all copyright.
2. Each user must:
(a) Not scale any drawing, use figured dimensions only and verify all dimensions;
(b) Only use this document in conjunction with all other relevant Project documents, specifications and information from any person;
(c) Where this document is issued in electronic form, make all appropriate electronic data, systems and document checks and comply with all third party proprietary software requirements;
(d) Properly form their own opinions as to the correctness and sufficiency of the documents for their purposes and notify Jack Merlo immediately upon becoming aware of any issue;
3. To the maximum extent permitted by law, all conditions and warranties concerning this document are expressly excluded and each user accepts fully and will appropriately insure for all risks and releases and indemnifies Jack Merlo from and against all claims, liabilities, loss, costs and expenses arising out of or in connection with any use, reliance upon, reproduction or disclosure of or change to this document.

PROJECT TITLE
251-261 Springvale Road, Glen Waverley
CLIENT
Hongxing Springvale Road Pty Ltd
SCALE 1:100, PAGE A1

DRAWING TITLE
Level 03 Landscape Plan and Detail Sections
PROJECT NUMBER: 20.500
DRAWING STATUS: TP02
DATE: 12.11.20
REVISION: D
Figured dimensions take precedence to scale readings. Verify all dimensions on site. Report any discrepancies to Jack Merlo Office for decision before proceedings with the work.

ADVERTISED COPY - CITY OF MONASH
 This copied document is made available for the sole purpose of enabling its consideration and review as part of a planning process under the Planning and Environment Act. The document must not be used for any purpose which may breach copyright.



PLANTING SCHEDULE

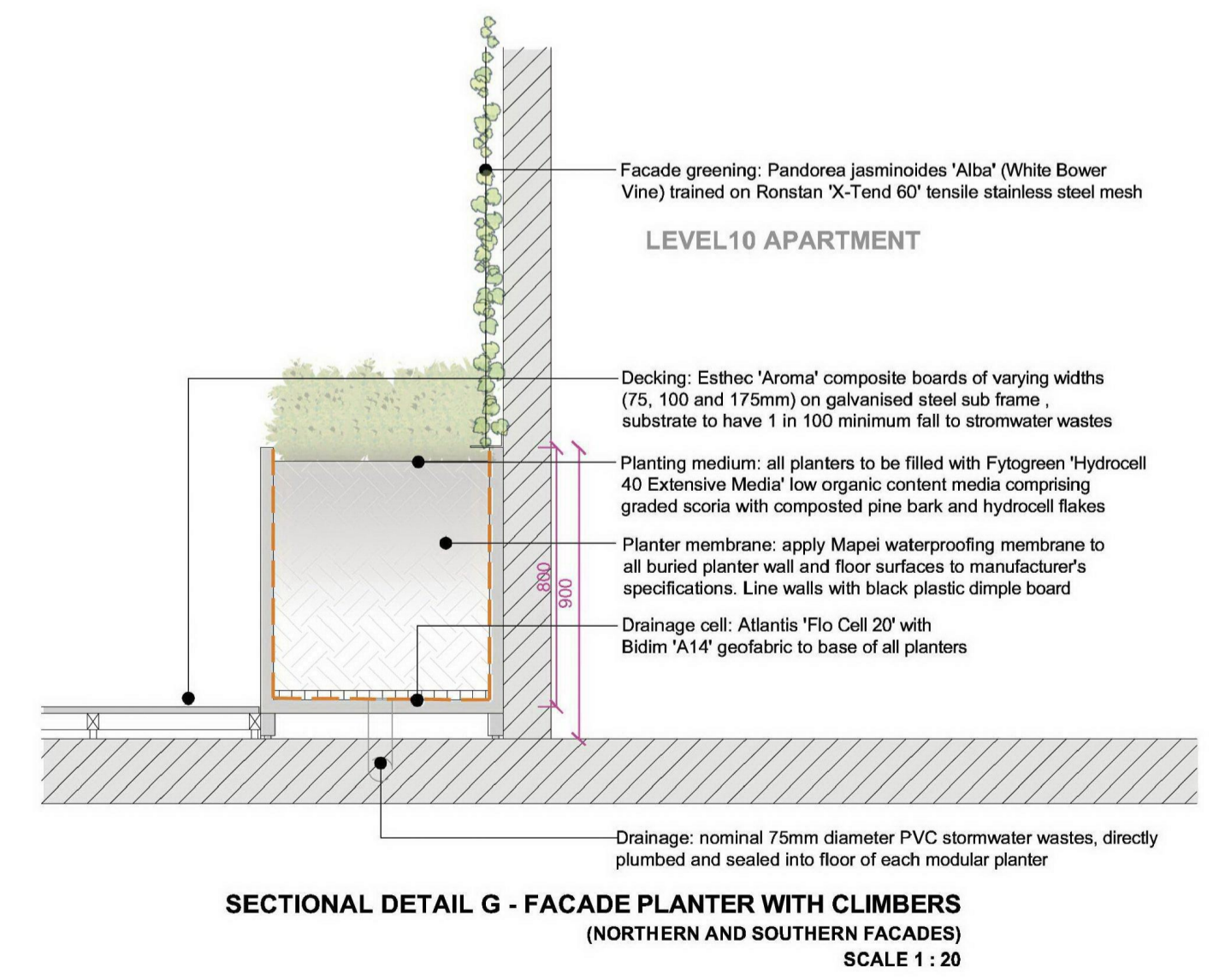
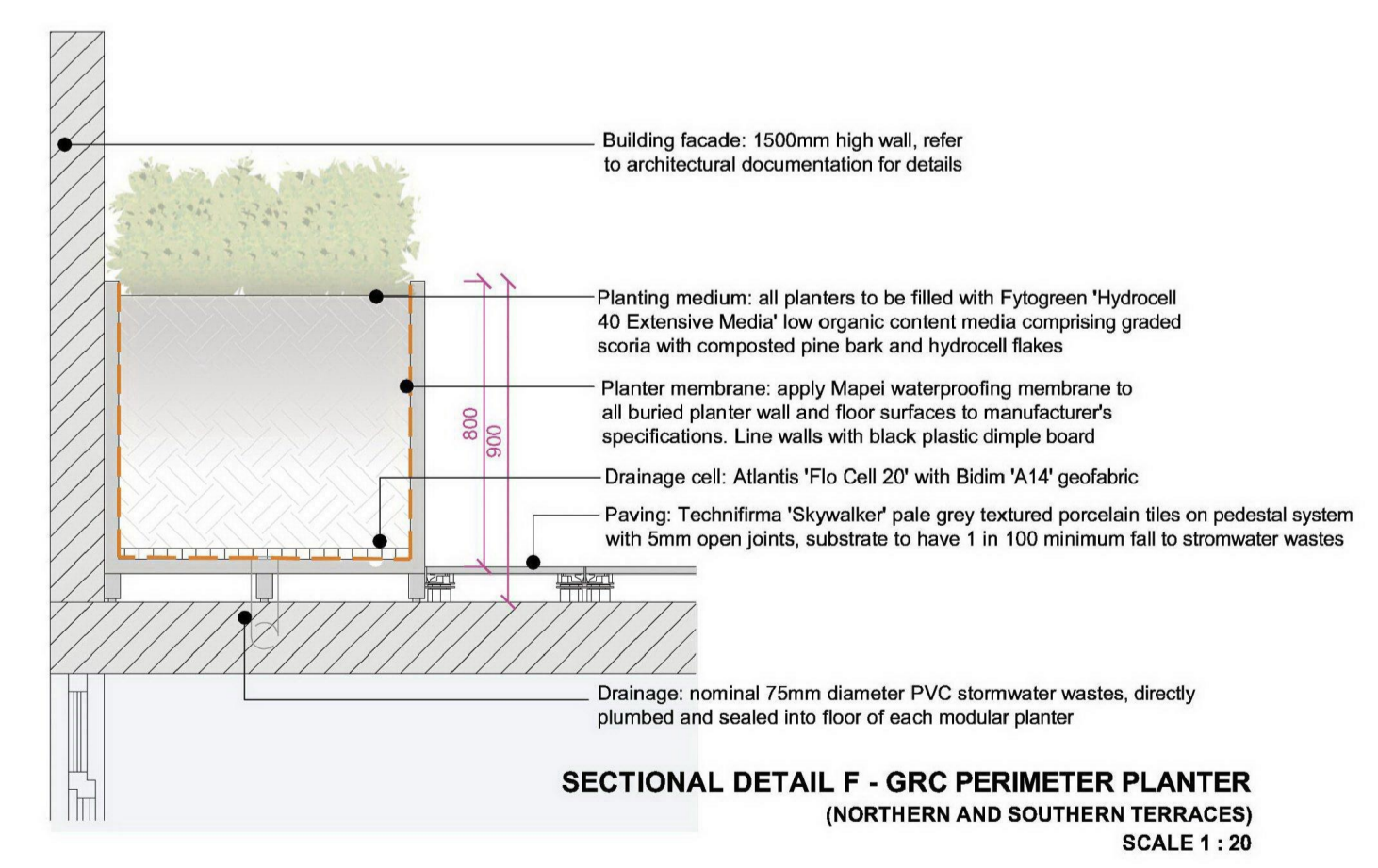
Symbol	Plant	Common Name	Pot Size	Quantity	Planted Height	Planted Width	Maintained Height	Maintained Width
B1	Bougainvillea glabra	Dwarf Bougainvillea	20cm	24	0.20m	0.20m	0.40m	0.80m
J1	Juniperus conferta	Trailing Juniper	20cm	42	0.10m	0.20m	0.20m	0.80m
O1	Olea europea	Common Olive Tree	100lt	02	1.50m	1.20m	2.00m	2.00m
P1	Pandorea jasminoides 'Alba'	White Bower Vine	25cm	22	0.60m	0.30m	5.00m	2.00m
R1	Rhaplolepis indica 'Spring Pear'	Compact White Indian Hawthorn	20cm	78	0.20m	0.20m	0.30m	0.50m
R2	Rosmarinus officinalis 'Blue Lagoon'	Trailing Rosemary	20cm	24	0.20m	0.20m	0.20m	0.80m

POT SCHEDULE

Code	Name	Size	Shape	Quantity	Colour	Supplier
U120	Atelier Vierkant 'U120'	1200mm diameter, 920mm high		02	Black	Cosh Living www.coshliving.com.au

FINISHES SCHEDULE

Code	Finish	Description	Supplier
PT	Porcelain Tiling	Material: Technifirma 'Skywalker' 20mm thick pale grey textured porcelain tiles Format: 1200 x 600mm stretcher-bond (common areas), 600 x 600mm grid (private terraces) Installation method: lay on height-adjustable pedestals at 600mm centres with 4mm open joints	Eco Outdoor www.ecooutdoor.com.au Phone: (03) 9427 9100
DE	Decking	Material: Esthec 'Aroma' composite timber boards with clip-in mounting system, installed to manufacturer's specifications Format: varying board widths - 72.5, 100 and 175mm, 5mm gaps	Dekton Oceania www.dekton.com.au
GRC	GRC Planters	Product: Satu Bumi 'CityScape' custom modular GRC planters Finish: off-white, to match Brighton Lite / white washed sand in-situ concrete finish Installation method: to be installed on height-adjustable pedestal system with 15mm diameter drainage holes at 600mm centres	Satu Bumi www.satubumi.com.au Phone: (03) 5292 1001



Jack Merlo
 Design & Landscape

332A Toorak Road
 South Yarra Victoria
 3141 Australia

+61 3 9866 5550
 info@jackmerlo.com
 www.jackmerlo.com

CONDITIONS OF USE
 This document may only be used as permitted by the terms of the Consultancy Agreement and for the purposes and stages of the Project for which it has been prepared and delivered by Jack Merlo; and by authorised persons who agree to these conditions.
 Subject only to the Consultancy Agreement:
 1. This document and all intellectual property rights in it remain the property of Jack Merlo and may not be changed, used, reproduced, provided or disclosed by or to any person without the written consent of Jack Merlo, and only then with clear identification of Jack Merlo as author and owner of all copyright.
 2. Each user must:
 (a) Not scale any drawing, use figured dimensions only and verify all dimensions;
 (b) Only use this document in conjunction with all other relevant Project documents, specifications and information from any person;
 (c) Where this document is issued in electronic form, make all appropriate electronic data, systems and document checks and comply with all third party proprietary software requirements;
 (d) Properly form their own opinions as to the correctness and sufficiency of the document for their purposes and notify Jack Merlo immediately upon becoming aware of any issue;
 3. To the maximum extent permitted by law, all conditions and warranties concerning this document are expressly excluded and each user accepts fully and will appropriately insure for all risks and releases and indemnifies Jack Merlo from and against all claims, liabilities, losses, costs and expenses arising out of or in connection with any use, reliance upon, reproduction or disclosure of or change to this document.

PROJECT TITLE
251-261 Springvale Road, Glen Waverley

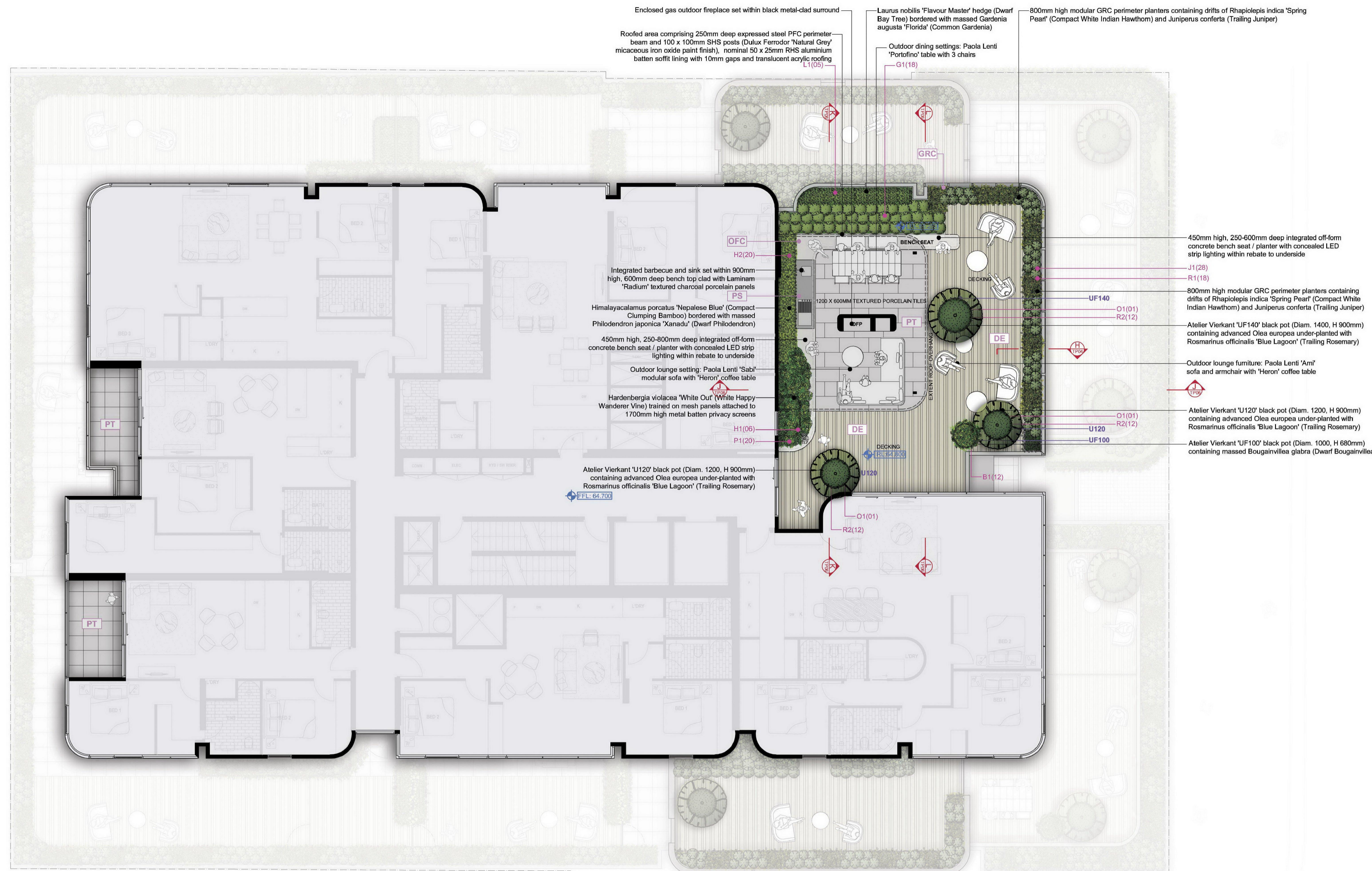
CLIENT
 Hongxing Springvale Road Pty Ltd

SCALE 1:100, PAGE A1

DRAWING TITLE
Level 10 Landscape Plan and Detail Sections

PROJECT NUMBER	DRAWING STATUS	DATE	REVISION
20.500	TP03	12.11.20	D

Figured dimensions take precedence to scale readings. Verify all dimensions on site. Report any discrepancies to Jack Merlo Office for decision before proceeding with the work.



ADVERTISED COPY - CITY OF MONASH
This copied document is made available for the sole purpose of enabling its consideration and review as part of a planning process under the Planning and Environment Act. The document must not be used for any purpose which may breach copyright.

PLAN - LEVEL 19
SCALE 1 : 100

PLANTING SCHEDULE

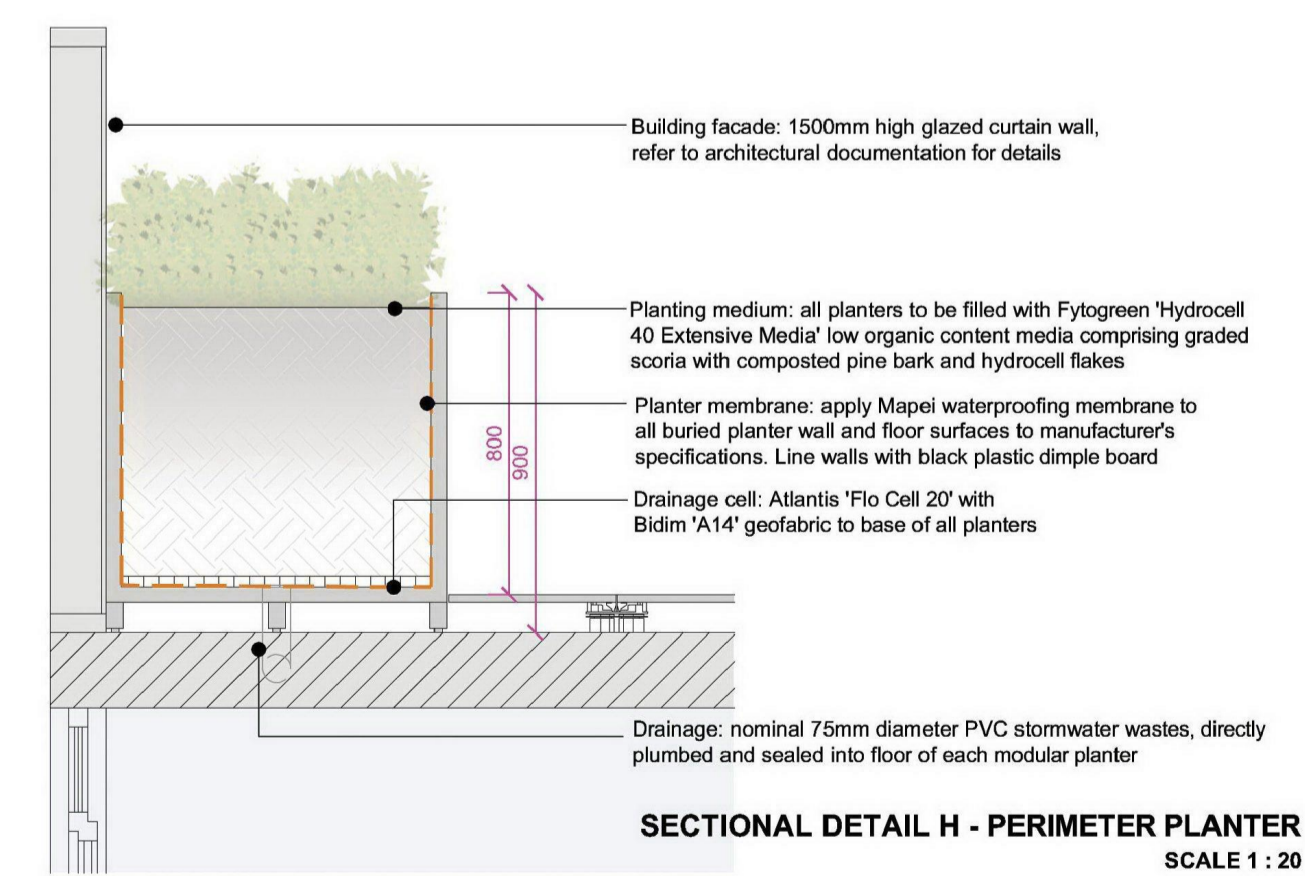
Symbol	Plant	Common Name	Pot Size	Quantity	Planted Height	Planted Width	Maintained Height	Maintained Width
B1	Bougainvillea glabra	Dwarf Bougainvillea	20cm	12	0.20m	0.20m	0.40m	0.80m
G1	Gardenia augusta 'Florida'	Common Gardenia	20cm	18	0.20m	0.20m	0.50m	0.50m
H1	Hardenbergia violacea 'White Out'	White Happy Wanderer Vine	20cm	06	0.50m	0.20m	1.50m	1.00m
H2	Himalayacalamus porcatius 'Nepalese Blue'	Compact Clumping Bamboo	30cm	20	1.20m	0.50m	2.00m	1.00m
J1	Juniperus conferta	Trailing Juniper	20cm	28	0.10m	0.20m	0.20m	0.80m
L1	Laurus nobilis 'Flavour Master'	Dwarf Bay Tree	40cm	05	1.00m	0.50m	1.80m	1.00m
O1	Olea europaea	Common Olive Tree	100L	03	1.50m	1.20m	2.00m	2.00m
P1	Philodendron japonica 'Xanadu'	Dwarf Philodendron	20cm	20	0.20m	0.20m	0.50m	0.50m
R1	Rhaphiolepis indica 'Spring Pearl'	Compact White Indian Hawthorn	20cm	18	0.20m	0.20m	0.50m	0.50m
R2	Rosmarinus officinalis 'Blue Lagoon'	Trailing Rosemary	20cm	36	0.20m	0.20m	0.20m	0.80m

POT SCHEDULE

Code	Name	Size	Shape	Quantity	Colour	Supplier
UF140	Atelier Vierkant 'UF140'	1400mm diameter, 960mm high		01	Black	Cosh Living www.coshliving.com.au
U120	Atelier Vierkant 'U120'	1200mm diameter, 920mm high		02	Black	Cosh Living www.coshliving.com.au
UF100	Atelier Vierkant 'UF100'	1000mm diameter, 680mm high		01	Black	Cosh Living www.coshliving.com.au

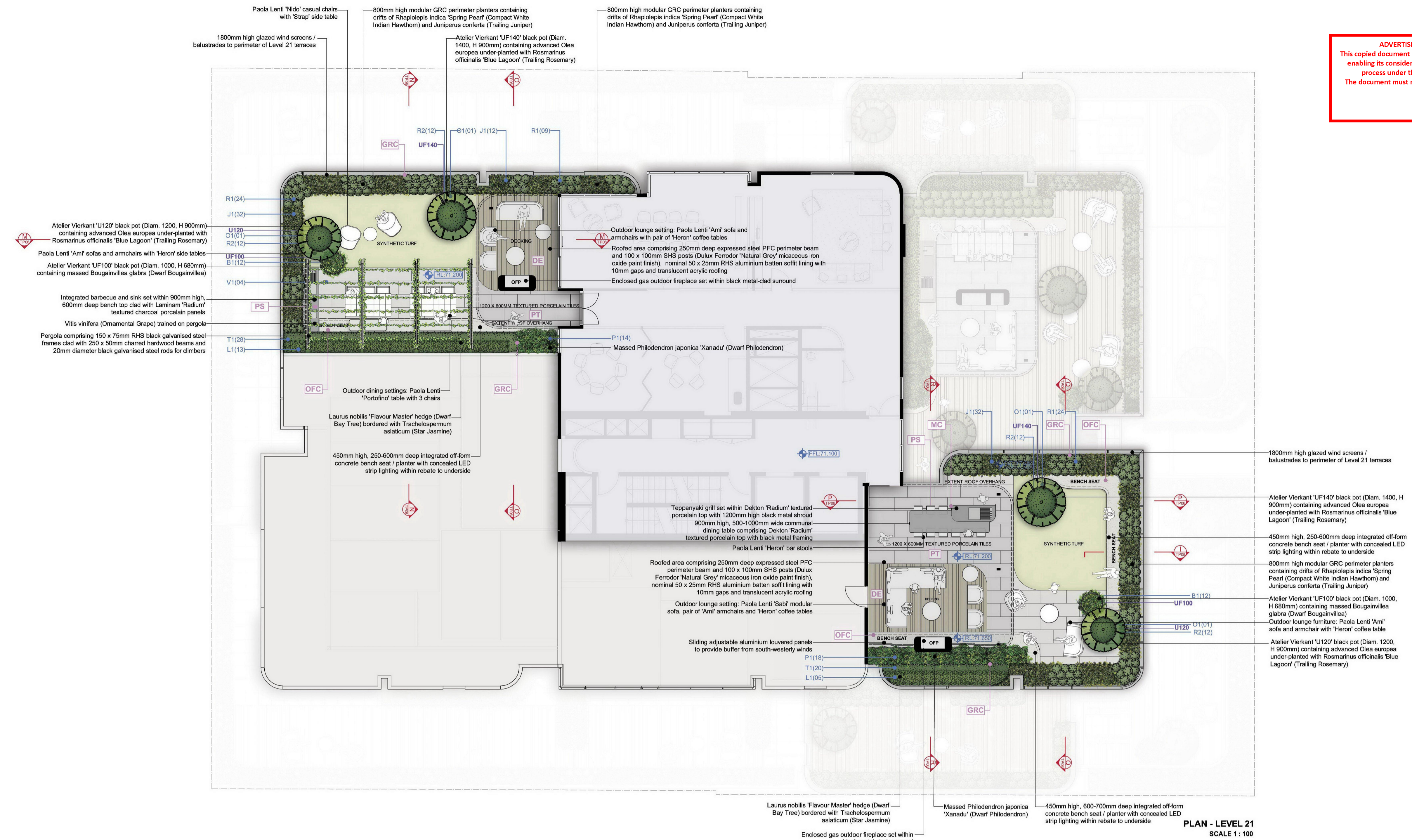
FINISHES SCHEDULE

Code	Finish	Description	Supplier
PT	Porcelain Tiling	Material: Techniflora 'Skywalker' 20mm thick pale grey textured porcelain tiles Format: 1200 x 600mm stretcher-bond (common areas), 600 x 600mm grid (private terraces) Installation method: lay on height-adjustable pedestals at 600mm centres with 4mm open joints	Eco Outdoor www.ecooutdoor.com.au Phone: (03) 9427 9100
DE	Decking	Material: Esthec 'Aroma' composite timber boards with clip-in mounting system, installed to manufacturer's specifications Format: varying board widths - 72.5, 100 and 175mm, 5mm gaps	Dekton Oceania www.dekton.com.au
PS	Porcelain Sheeting	Material: Dekton Industrial Collection 'Radium' textured stone-look large format porcelain panels Format: 12mm thick panels cut from large-format sheets (3240 x 1470mm) Installation method: lay on compressed fibre cement substrates to manufacturer's specifications	Dekton Oceania www.dekton.com.au
OFC	Off Form Concrete	Concrete specification: 'Brighton Lite' cement and white washed sand, 7mm quartz aggregate Structural details: nominal 32Mpa concrete, reinforced to Structural Engineer's specifications Finish: class 2 finish, 5mm radiuses to exposed edges, lightly sandblasted	Mentone Premix www.mentonepremix.com.au Phone: (03) 9584 2863
GRC	GRC Planters	Product: Satu Bumi 'CityScape' custom modular GRC planters Finish: off-white, to match Brighton Lite / white washed sand in-situ concrete finish Installation method: to be installed on height-adjustable pedestal system with 15mm diameter drainage holes at 600mm centres	Satu Bumi www.satubumi.com.au Phone: (03) 5292 1001
MC	Metal Cladding	Application: Metal Planters Material: 10mm thick aluminum plate Finish: Dulux Electro 'Black Ace' powder coating	TBC



SECTIONAL DETAIL H - PERIMETER PLANTER
SCALE 1 : 20

ADVERTISED COPY - CITY OF MONASH
 This copied document is made available for the sole purpose of enabling its consideration and review as part of a planning process under the Planning and Environment Act. The document must not be used for any purpose which may breach copyright.



PLAN - LEVEL 21
 SCALE 1 : 100

PLANTING SCHEDULE

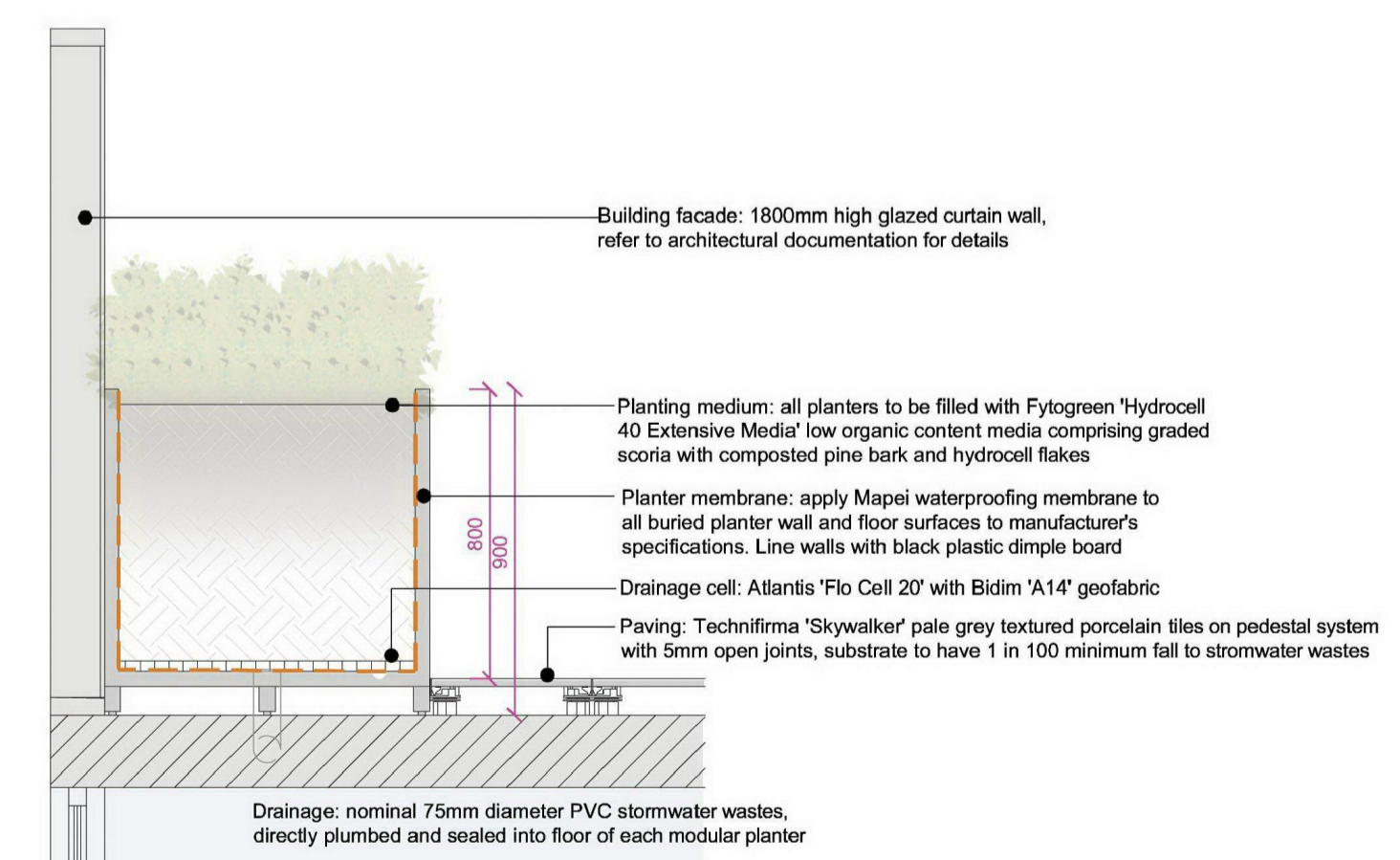
Symbol	Plant	Common Name	Pot Size	Quantity	Planted Height	Planted Width	Maintained Height	Maintained Width
B1	Bougainvillea glabra	Dwarf Bougainvillea	20cm	24	0.20m	0.20m	0.40m	0.80m
J1	Juniperus conferta	Trailing Juniper	20cm	76	0.15m	0.20m	0.20m	0.80m
L1	Laurus nobilis 'Flavour Master' hedge	Dwarf Bay Tree	40cm	18	1.20m	0.50m	2.00m	1.00m
O1	Olea europea	Common Olive	100lit	04	1.50m	1.20m	2.00m	2.00m
P1	Philodendron japonica 'Xanadu'	Dwarf Philodendron	20cm	32	0.20m	0.20m	0.50m	0.60m
R1	Rhapidolepia indica 'Spring Pearl'	Compact White Indian Hawthorn	20cm	45	0.20m	0.20m	0.50m	0.60m
R2	Rosmarinus officinalis 'Blue Lagoon'	Trailing Rosemary	17cm	48	0.15m	0.20m	0.40m	0.70m
T1	Trachelospermum jasminoides	Star Jasmine	17cm	48	0.15m	0.20m	0.30m	0.80m

POT SCHEDULE

Code	Name	Size	Shape	Quantity	Colour	Supplier
UF140	Atelier Vierkant 'UF140'	1400mm diameter, 960mm high	[Image]	02	Black	Cosh Living www.coshliving.com.au
U120	Atelier Vierkant 'U120'	1200mm diameter, 920mm high	[Image]	02	Black	Cosh Living www.coshliving.com.au
UF100	Atelier Vierkant 'UF100'	1000mm diameter, 680mm high	[Image]	02	Black	Cosh Living www.coshliving.com.au

FINISHES SCHEDULE

Code	Finish	Description	Supplier
PT	Porcelain Tiling	Material: Technifirma 'Skywalker' 20mm thick pale grey textured porcelain tiles Format: 1200 x 600mm stretcher-bond (common areas), 600 x 600mm grid (private terraces) Installation method: lay on height-adjustable pedestals at 600mm centres with 4mm open joints	Eco Outdoor www.ecooutdoor.com.au Phone: (03) 9427 9100
DE	Decking	Material: Esthec 'Aroma' composite timber boards with clip-in mounting system, installed to manufacturer's specifications Format: varying board widths - 72.5, 100 and 175mm, 5mm gaps	Dekton Oceania www.dekton.com.au
PS	Porcelain Sheeting	Material: Dekton Industrial Collection 'Radium' textured stone-look large format porcelain panels Format: 12mm thick panels cut from large-format sheets (3240 x 1470mm) Installation method: lay on compressed fibre cement substrates to manufacturer's specifications	Dekton Oceania www.dekton.com.au
OFC	Off Form Concrete	Concrete specification: 'Brighton Lite' cement and white washed sand, 7mm quartz aggregate Structural details: nominal 32Mpa concrete, reinforced to Structural Engineer's specifications Finish: class 2 finish, 5mm radiuses to exposed edges, lightly sandblasted	Mentone Premix www.mentonepremix.com.au Phone: (03) 9584 2863
GRC	GRC Planters	Product: Satu Bumi 'CityScope' custom modular GRC planters Finish: off-white, to match Brighton Lite / white washed sand in-situ concrete finish Installation method: to be installed on height-adjustable pedestal system with 15mm diameter drainage holes at 600mm centres	Satu Bumi www.satubumi.com.au Phone: (03) 5292 1001
MC	Metal Cladding	Application: Metal Planters Material: 10mm thick aluminium plate Finish: Dulux 'Electro Black Ace' powder coating	TBC



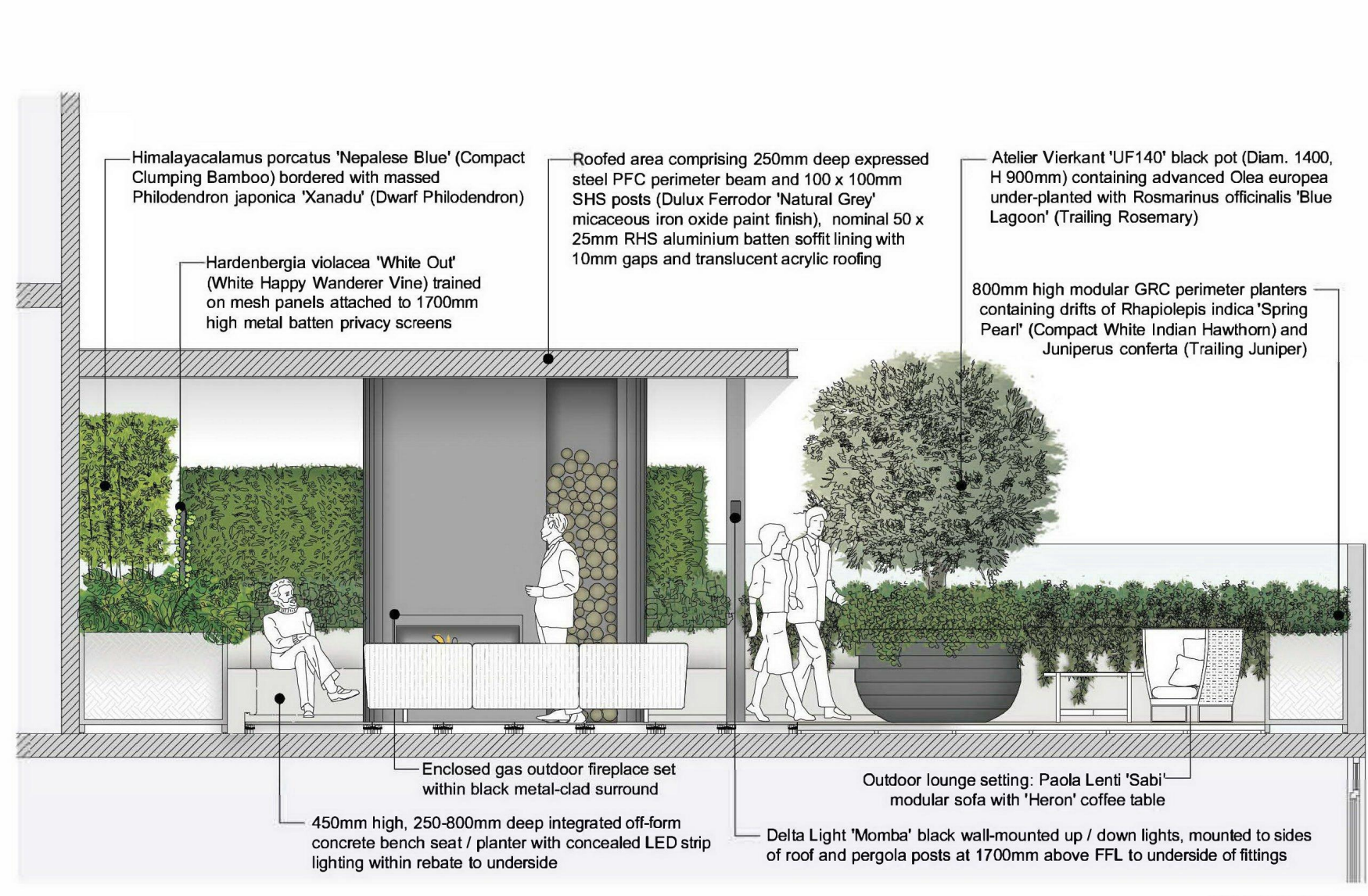
SECTION DETAIL I - PERIMETER PLANTER
 (SOUTH-EASTERN AND NORTH-WESTERN TERRACES)
 SCALE 1 : 20

Jack Merlo
 Design & Landscape
 332A Toorak Road
 South Yarra Victoria
 3141 Australia
 +61 3 9866 5550
 info@jackmerlo.com
 www.jackmerlo.com

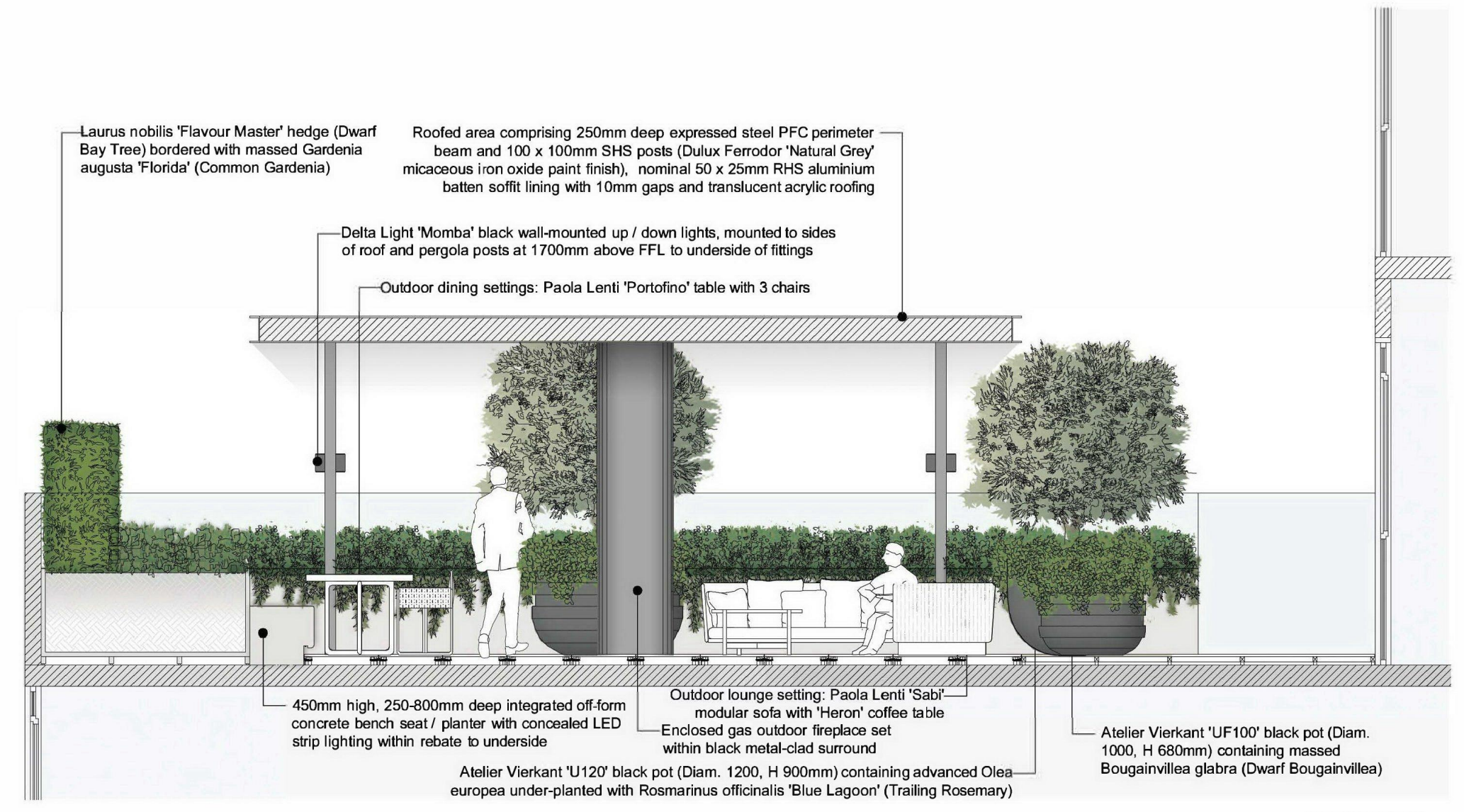
CONDITIONS OF USE
 This document may only be used as permitted by the terms of the Consultancy Agreement and for the purposes and stages of the Project for which it has been prepared and delivered by Jack Merlo; and by authorised persons who agree to these conditions.
 Subject only to the Consultancy Agreement:
 1. This document and all intellectual property rights in it remain the property of Jack Merlo and may not be changed, used, reproduced, provided or disclosed by or to any person without the written consent of Jack Merlo, and only then with clear identification of Jack Merlo as author and owner of all copyright.
 2. Each user must:
 (a) Not scale any drawing, use figured dimensions only and verify all dimensions;
 (b) Only use this document in conjunction with all other relevant Project documents, specifications and information from any person;
 (c) Where this document is issued in electronic form, make all appropriate electronic data, systems and document checks and comply with all third party proprietary software requirements;
 (d) Properly form their own opinions as to the correctness and sufficiency of the documents for their purposes and notify Jack Merlo immediately upon becoming aware of any issue;
 3. To the maximum extent permitted by law, all conditions and warranties concerning this document are expressly excluded and each user accepts fully and will appropriately insure for all risks and releases and indemnifies Jack Merlo from and against all claims, liabilities, loss, costs and expenses arising out of or in connection with any use, reliance upon, reproduction or disclosure of or change to this document.

PROJECT TITLE
251-261 Springvale Road, Glen Waverley
 CLIENT
 Hongxing Springvale Road Pty Ltd
 SCALE 1:100, PAGE A1

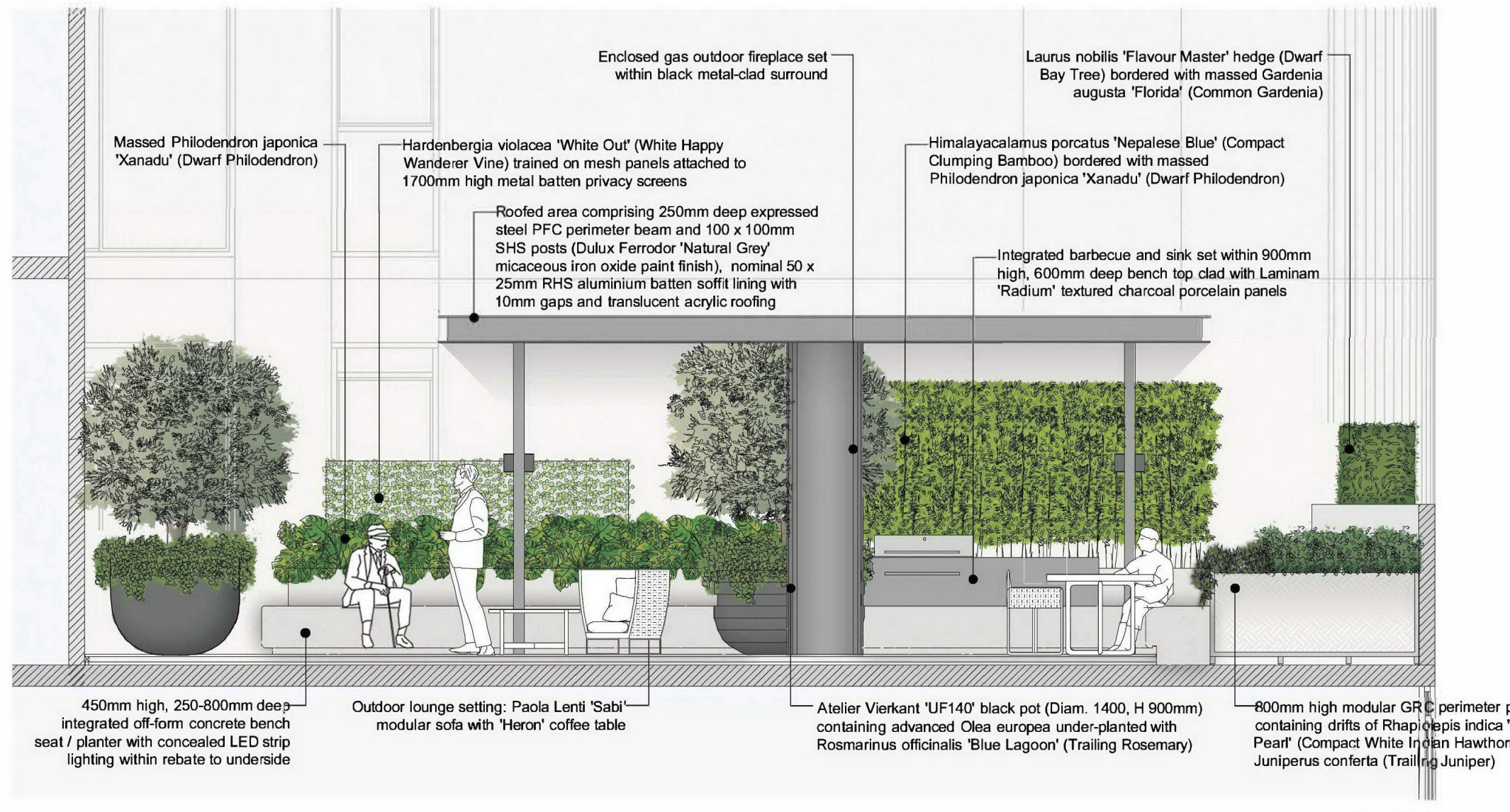
DRAWING TITLE
Level 21 Landscape Plan and Detail Section
 PROJECT NUMBER
 20.500
 DRAWING STATUS
 TP05
 DATE
 12.11.20
 REVISION
 D
 Figured dimensions take precedence to scale readings. Verify all dimensions on site. Report any discrepancies to Jack Merlo Office for decision before proceedings with the work.



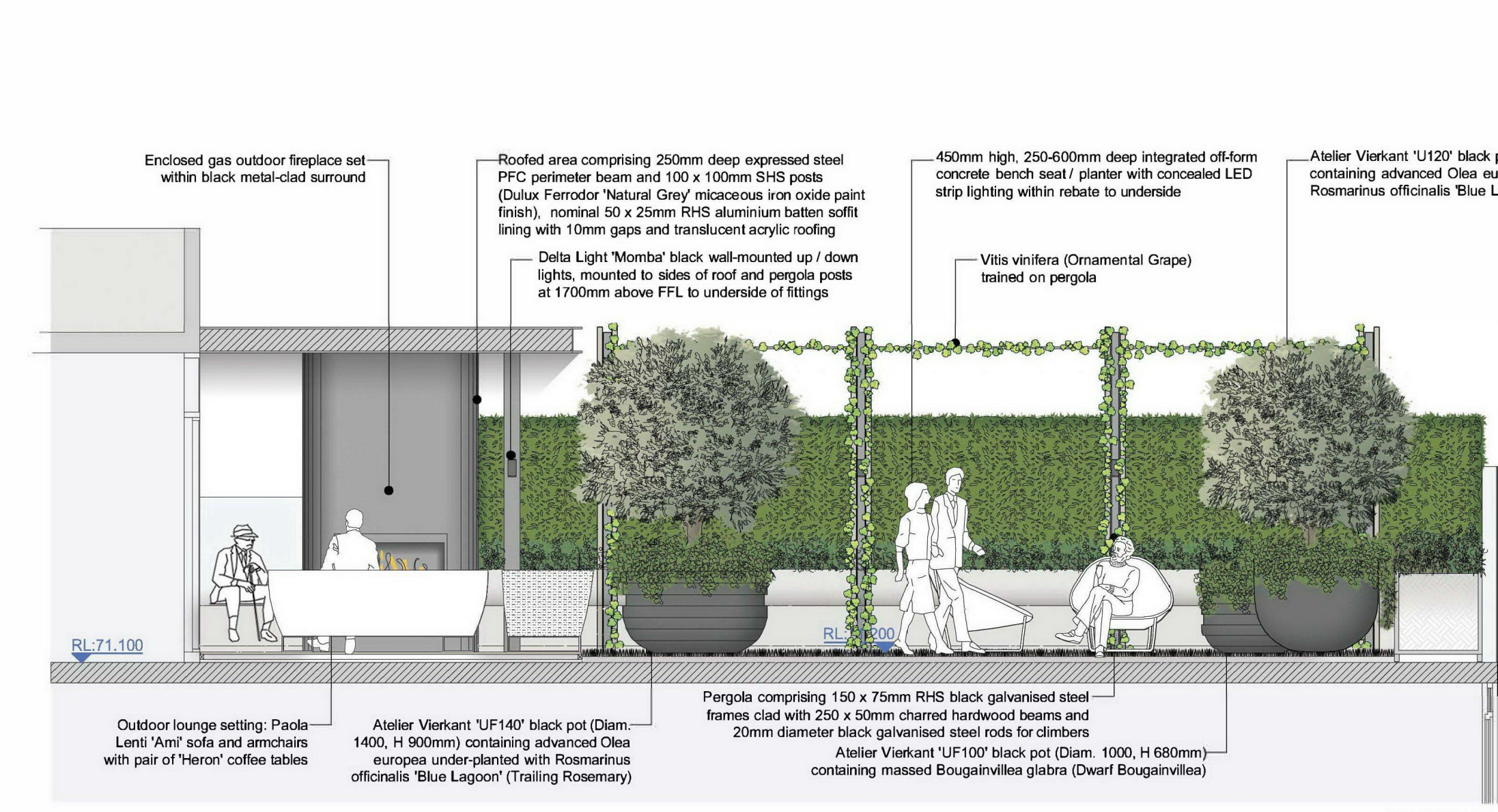
SECTION J
(THROUGH LEVEL 19 NORTH-EASTERN COMMUNAL TERRACE TO NORTH)
SCALE 1 : 50



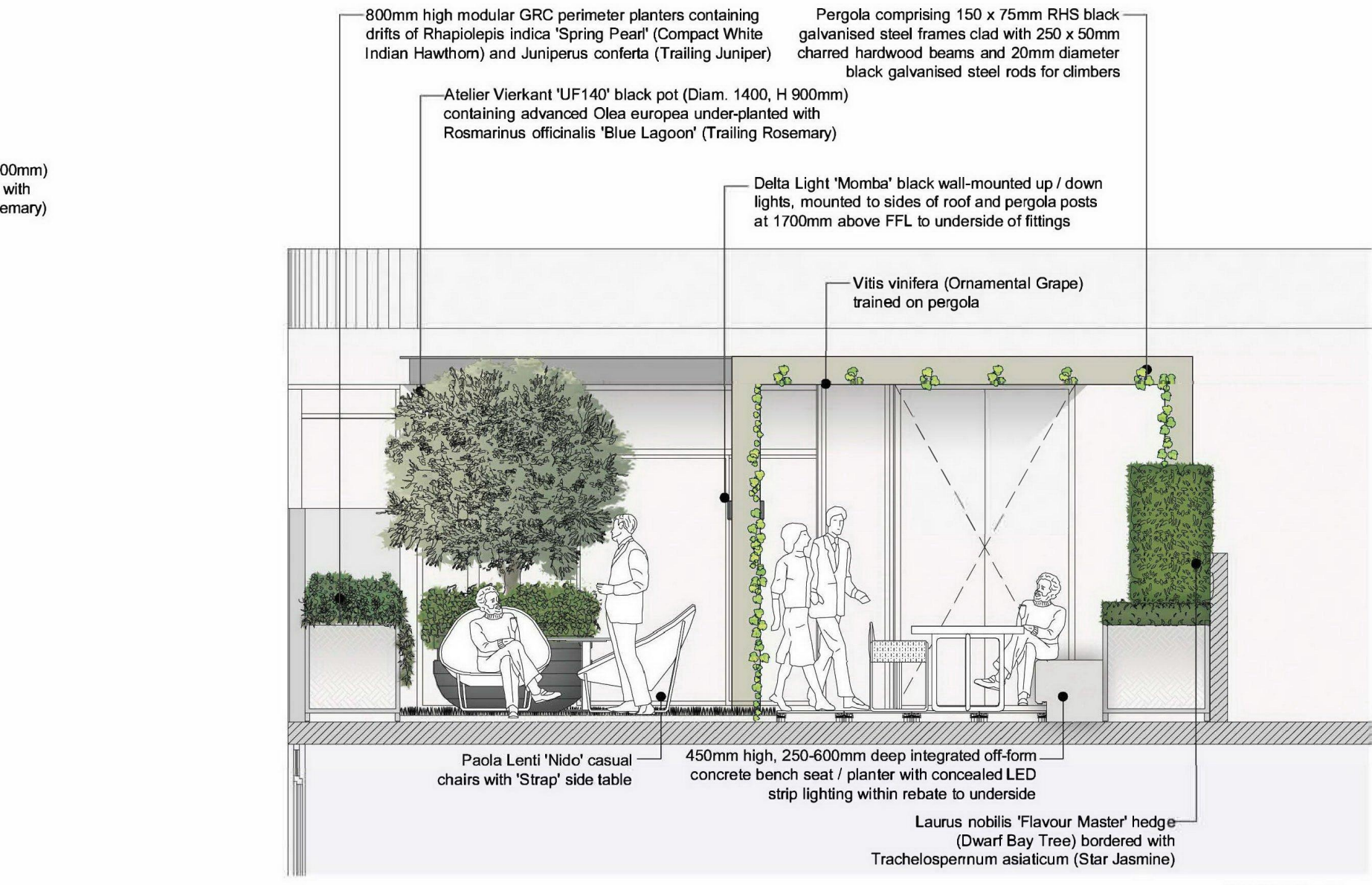
SECTION K
(THROUGH LEVEL 19 NORTH-EASTERN TERRACE TO EAST)
SCALE 1 : 50



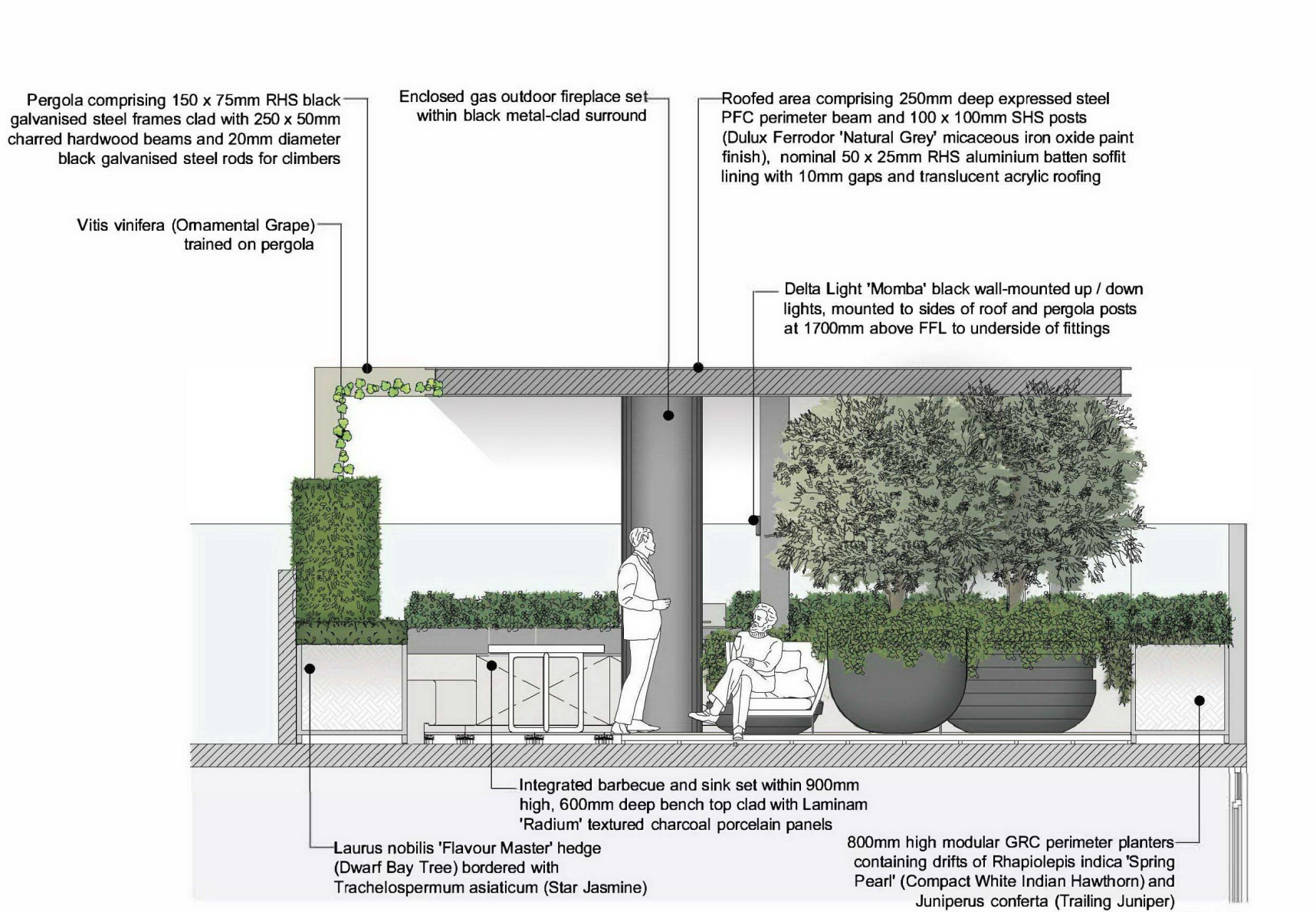
SECTION L
(THROUGH LEVEL 19 EASTERN NORTH-EASTERN TERRACE TO WEST)
SCALE 1 : 50



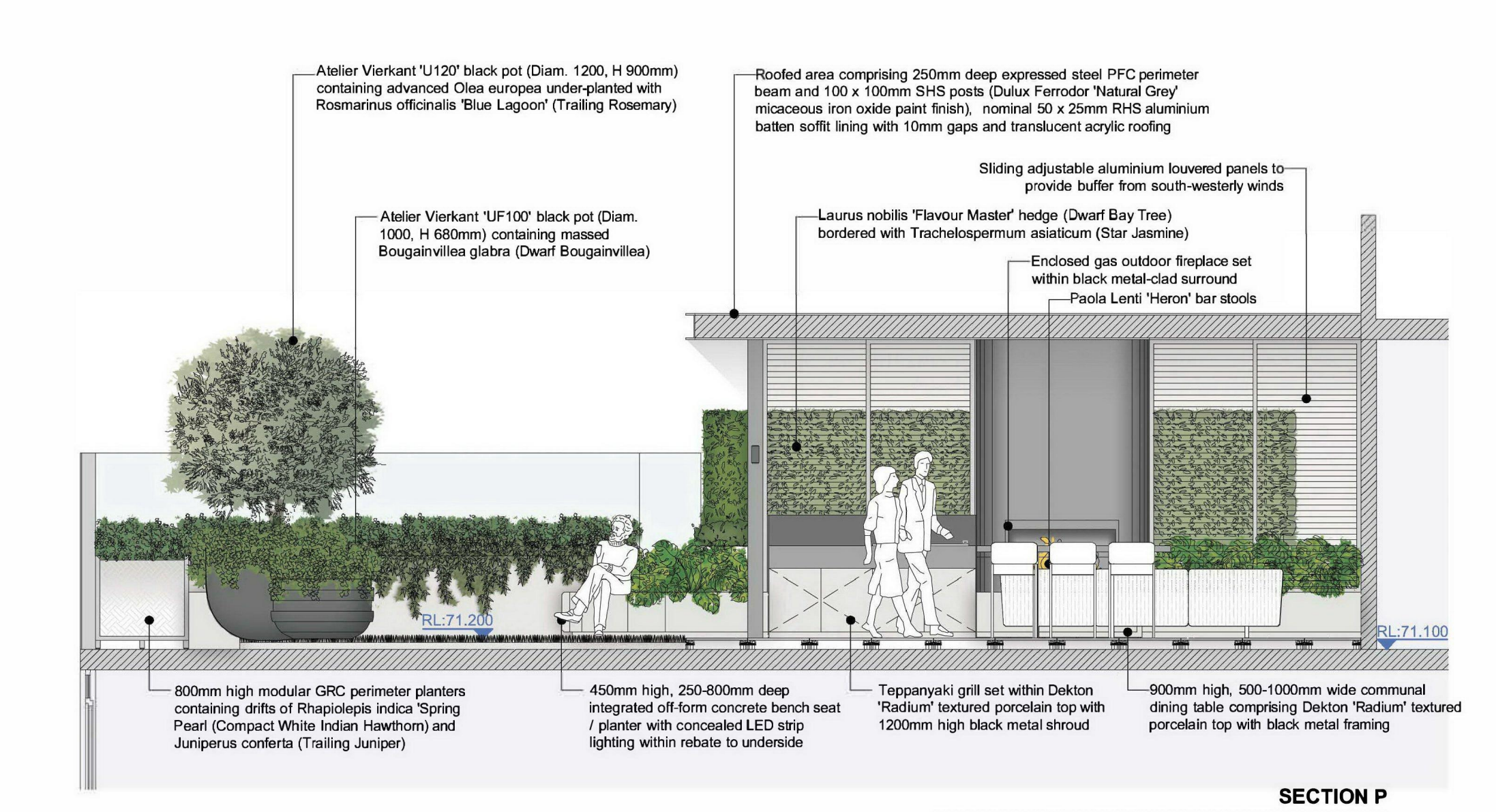
SECTION M
(THROUGH LEVEL 21 NORTH-WESTERN TERRACE TO SOUTH)
SCALE 1 : 50



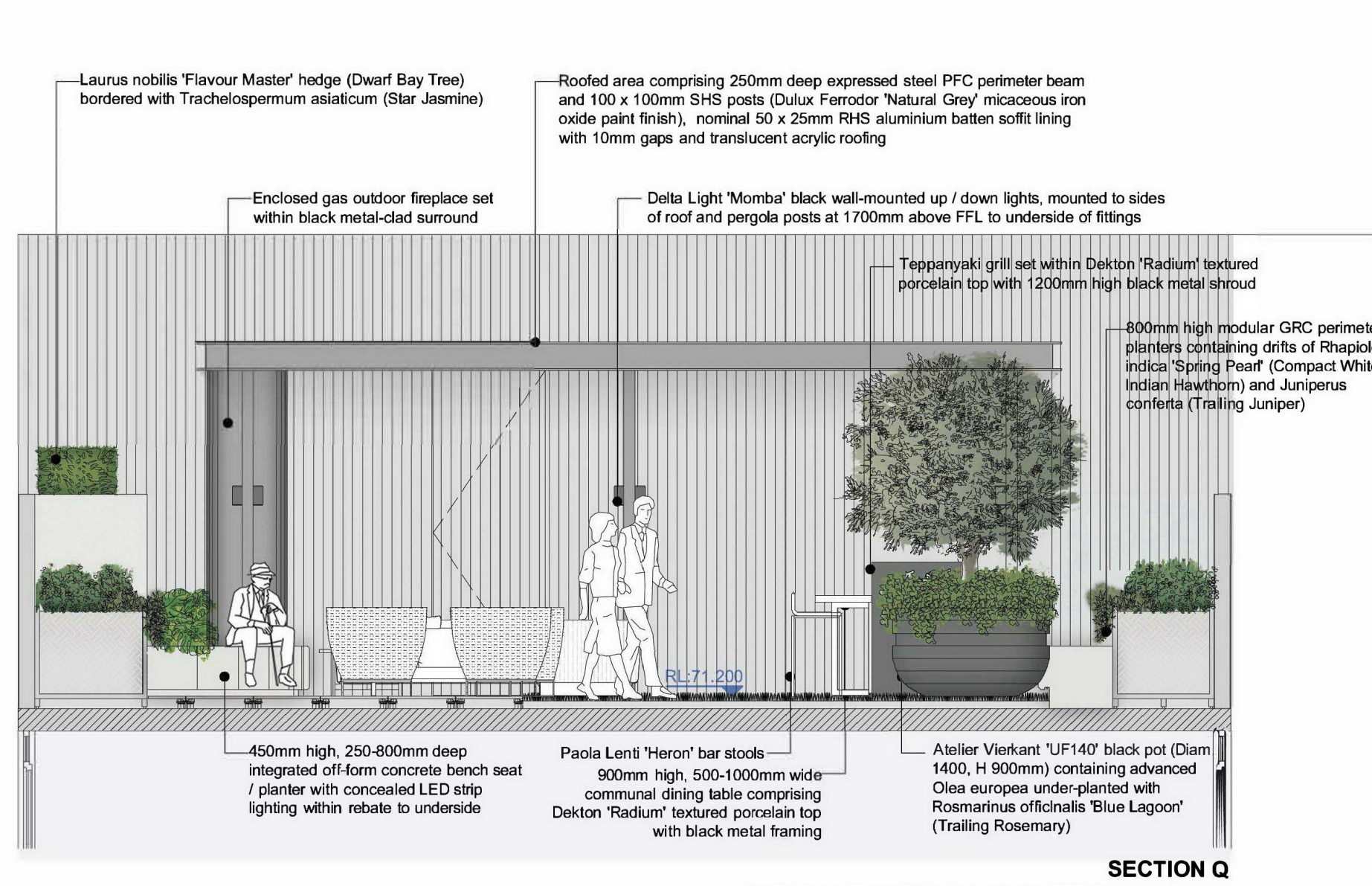
SECTION N
(THROUGH LEVEL 21 NORTH-WESTERN TERRACE TO EAST)
SCALE 1 : 50



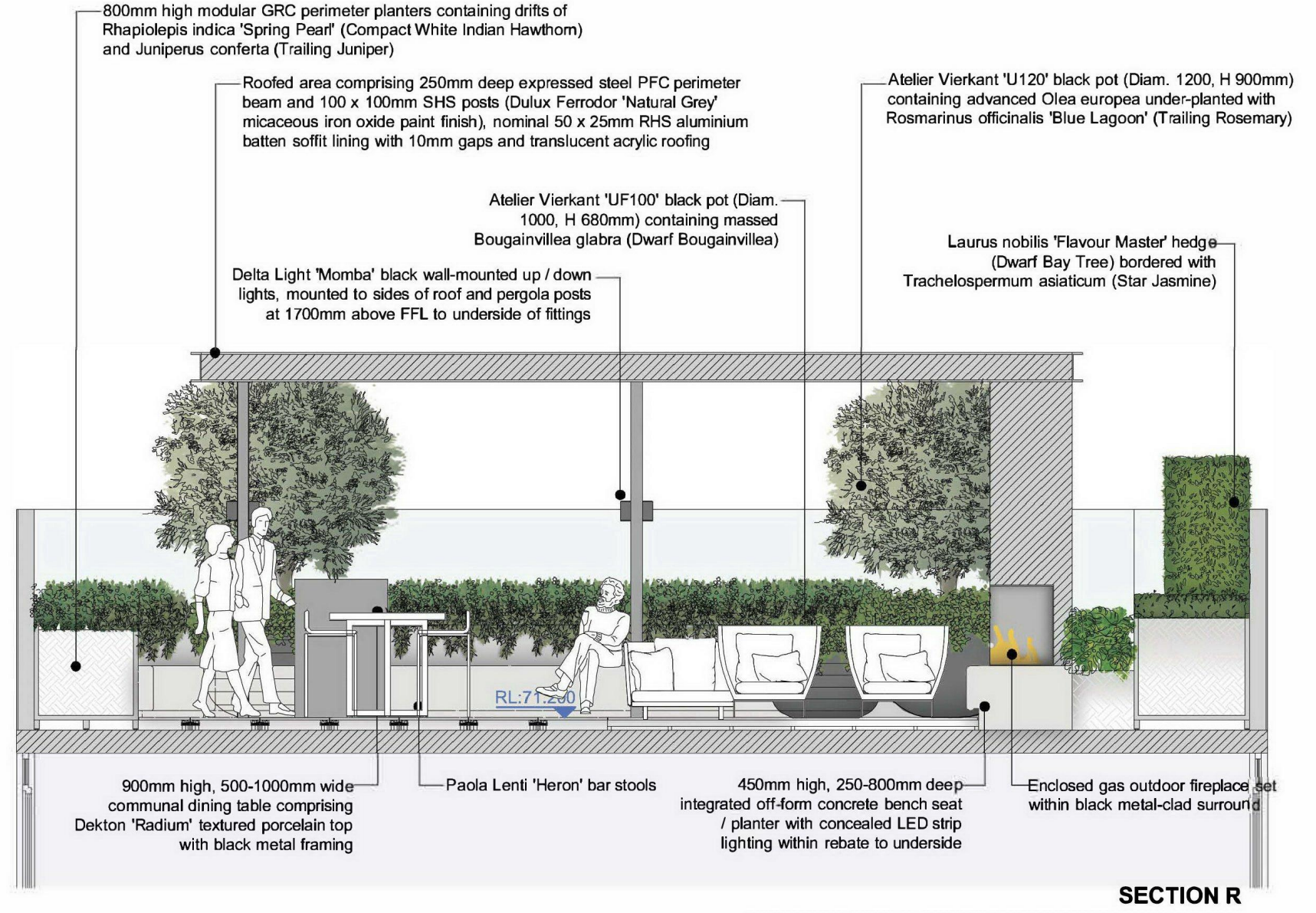
SECTION O
(THROUGH LEVEL 21 NORTH-WESTERN TERRACE TO WEST)
SCALE 1 : 50



SECTION P
(THROUGH LEVEL 21 SOUTH-EASTERN TERRACE TO SOUTH)
SCALE 1 : 50



SECTION Q
(THROUGH LEVEL 21 SOUTH-EASTERN TERRACE TO WEST)
SCALE 1 : 50



SECTION R
(THROUGH LEVEL 21 SOUTH-EASTERN TERRACE TO EAST)
SCALE 1 : 50

Jack Merlo
Design & Landscape
332A Toorak Road
South Yarra Victoria
3141 Australia
+61 3 9866 5550
info@jackmerlo.com
www.jackmerlo.com

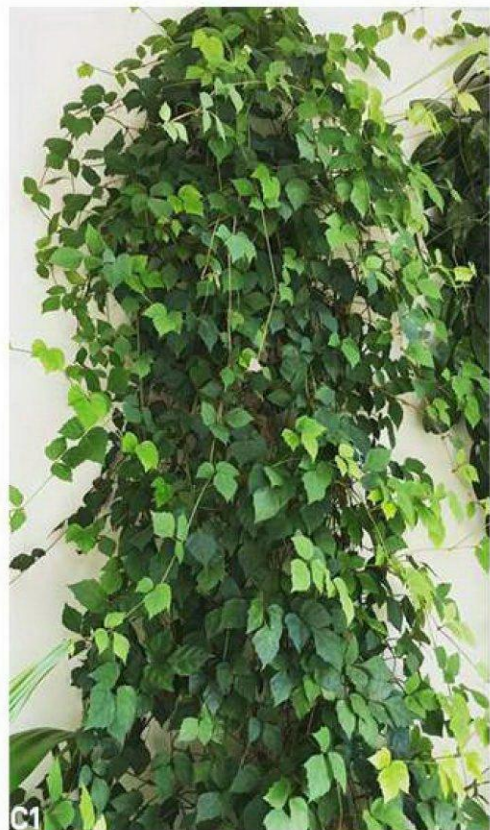
CONDITIONS OF USE
This document may only be used as permitted by the terms of the Consultancy Agreement and for the purposes and stages of the Project for which it has been prepared and delivered by Jack Merlo; and by authorized persons who agree to these conditions.
Subject only to the Consultancy Agreement:
1. This document and all intellectual property rights in it remain the property of Jack Merlo and may not be changed, used, reproduced, provided or disclosed by to any person without the written consent of Jack Merlo, and only then with clear identification of Jack Merlo as author and owner of all changes made.
2. Each user must:
(a) Not scale any drawing, use figured dimensions only and verify all dimensions;
(b) Only use this document in conjunction with all other relevant Project documents, specifications and information from any person;
(c) Where this document is issued in electronic form, make all appropriate electronic data, systems and document checks and comply with all third party proprietary software requirements;
(d) Properly form their own opinions as to the correctness and sufficiency of the document for their purposes and notify Jack Merlo immediately upon becoming aware of any issue.
3. To the maximum extent permitted by law, all conditions and warranties concerning this document are expressly excluded and each user accepts fully and will appropriately insure for all risks and releases and indemnifies Jack Merlo from and against all claims, liabilities, loss, costs and expenses arising out of or in connection with any use, reliance upon, reproduction or disclosure of or change to this document.

ADVERTISED COPY - CITY OF MONASH
This copied document is made available for the sole purpose of enabling its consideration and review as part of a planning process under the Planning and Environment Act. The document must not be used for any purpose which may breach copyright.

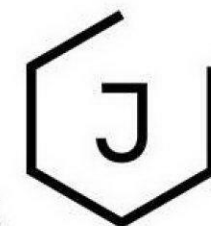
PROJECT TITLE
251-261 Springvale Road, Glen Waverley
CLIENT
Hongxing Springvale Road Pty Ltd
SCALE 1:50, PAGE 61

DRAWING TITLE
Level 19 and Level 21 Communal Terrace Sections
PROJECT NUMBER
20.500
DRAWING STATUS
TP06
DATE
12.11.20
REVISION
D
Figured dimensions take precedence to scale readings. Verify all dimensions on site. Report any discrepancies to Jack Merlo Office for decision before proceeding with the work.

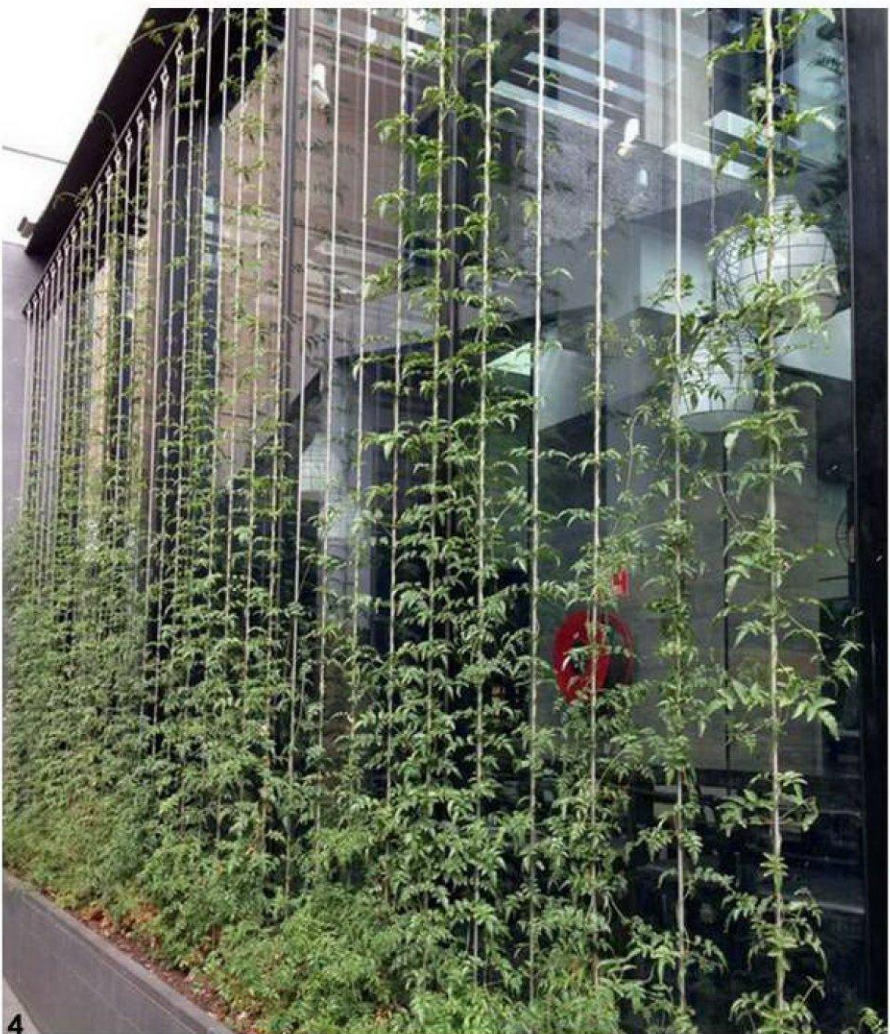
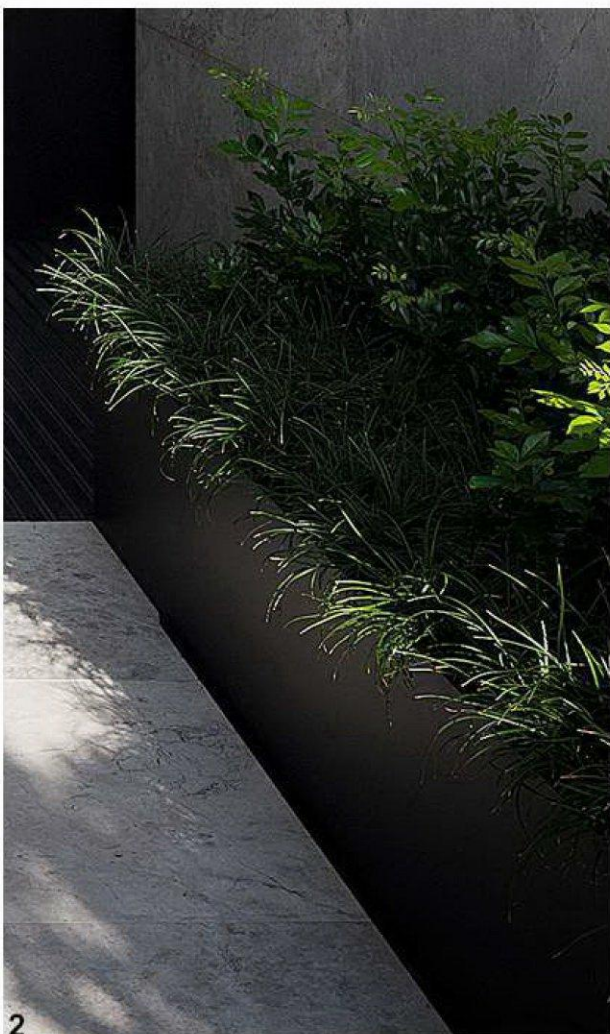
ADVERTISED COPY - CITY OF MONASH
This copied document is made available for the sole purpose of enabling its consideration and review as part of a planning process under the Planning and Environment Act.
The document must not be used for any purpose which may breach copyright.



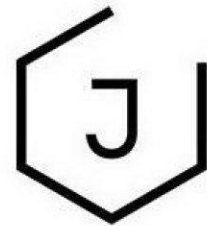
- C1 Cissus antarctica (Kangaroo Vine)
- J1 Juniperus conferta (Trailing Juniper)
- N1 Nandina domestica 'Lemon Lime' (Dwarf Sacred Bamboo)
- P2 Philodendron japonica 'Xanadu' (Dwarf Philodendron)
- P3 Philodendron scandens (Heart-Leaf Trailing Philodendron)



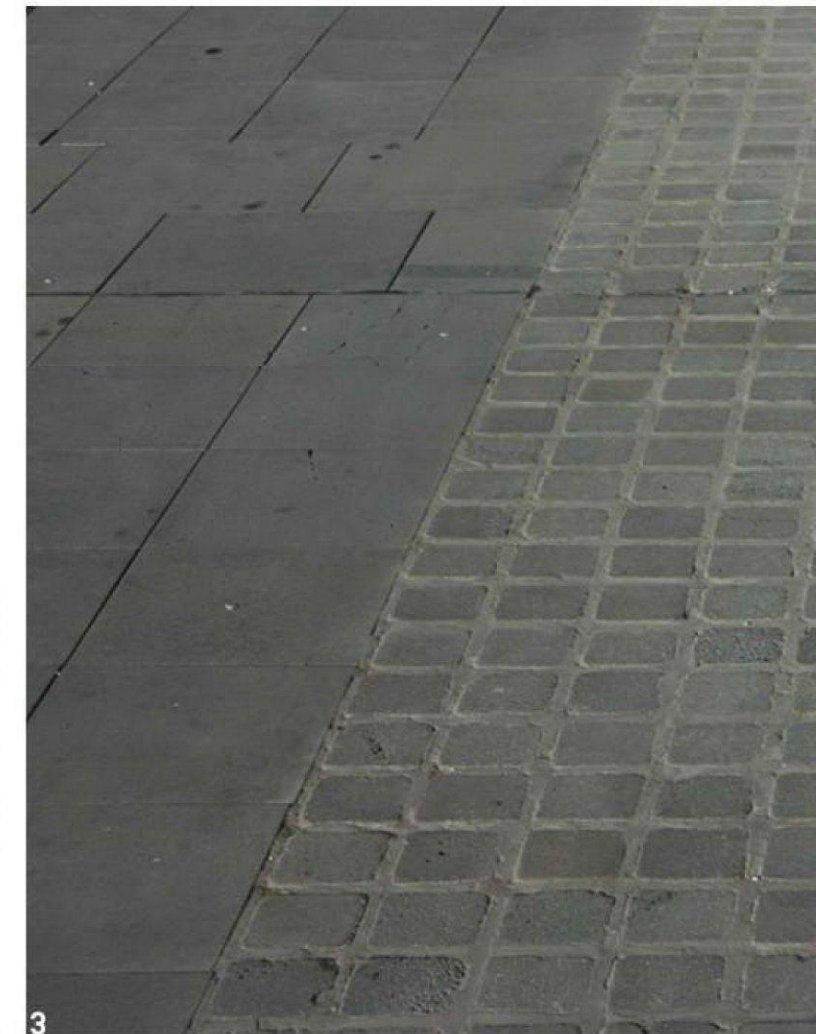
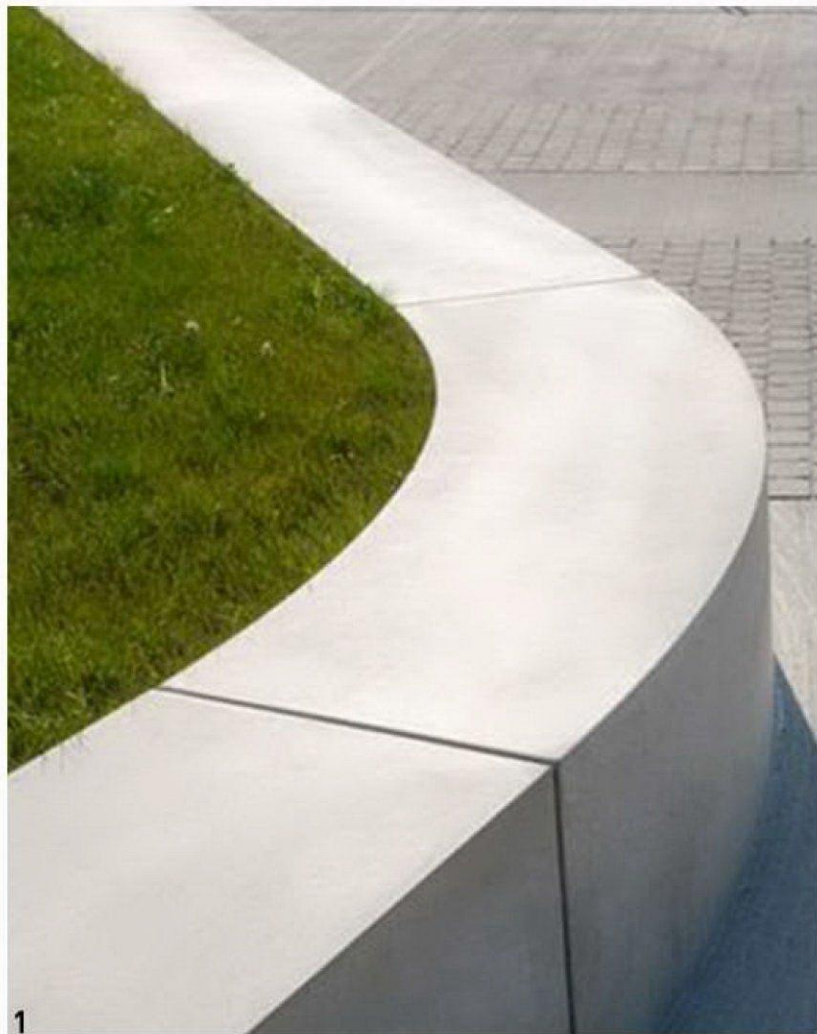
ADVERTISED COPY - CITY OF MONASH
This copied document is made available for the sole purpose of enabling its consideration and review as part of a planning process under the Planning and Environment Act. The document must not be used for any purpose which may breach copyright.



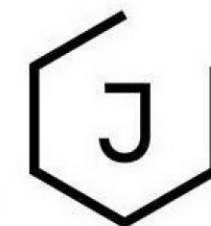
- 1 Atelier Vierkant 'CBH' and 'AHS' Black Pots
- 2 Metal Planter
- 3 Cafe Terrace - Kerbside Dining
- 4 Climbers on Vertical Stainless Steel Cables



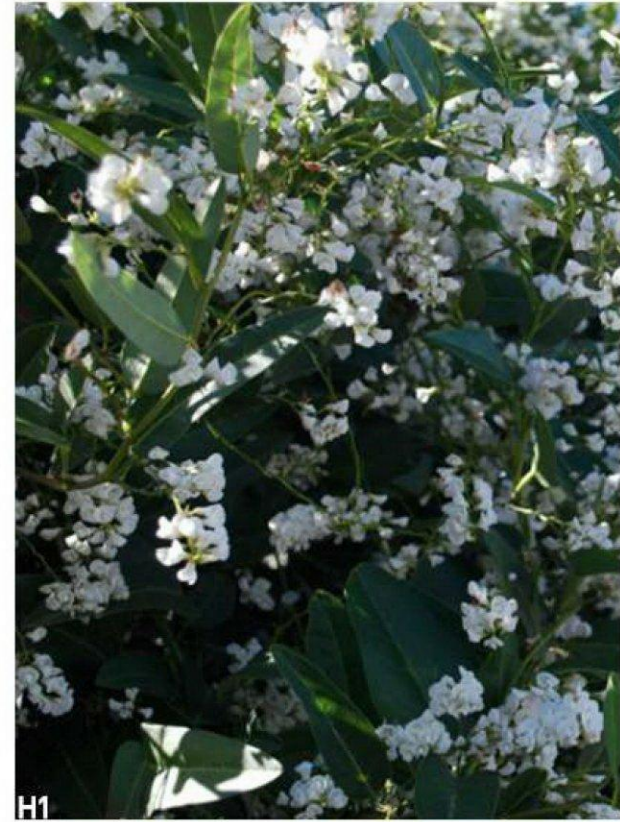
ADVERTISED COPY - CITY OF MONASH
This copied document is made available for the sole purpose of enabling its consideration and review as part of a planning process under the Planning and Environment Act. The document must not be used for any purpose which may breach copyright.



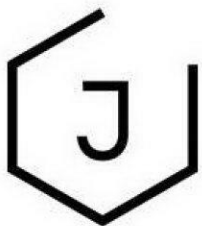
- 1 Off-Form Concrete Seating
- 2 Victorian Sawn Bluestone Paving - Footpath
- 3 Victorian Sawn Bluestone Setts - Residential Entry and Cafe Terrace



ADVERTISED COPY - CITY OF MONASH
This copied document is made available for the sole purpose of enabling its consideration and review as part of a planning process under the Planning and Environment Act.
The document must not be used for any purpose which may breach copyright.



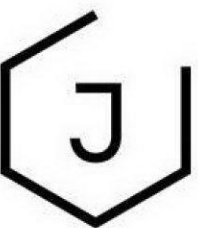
- A1 Advanced *Olea europa* (Olive Tree)
- B1 *Bougainvillea glabra* (Dwarf Bougainvillea)
- G1 *Gardenia augusta* 'Florida' (Common Gardenia)
- H1 *Hardenbergia violacea* 'White Out' (White Happy Wanderer Vine)
- H2 *Himalayacalamus porcatus* 'Nepalese Blue' (Dwarf Clumping Bamboo)



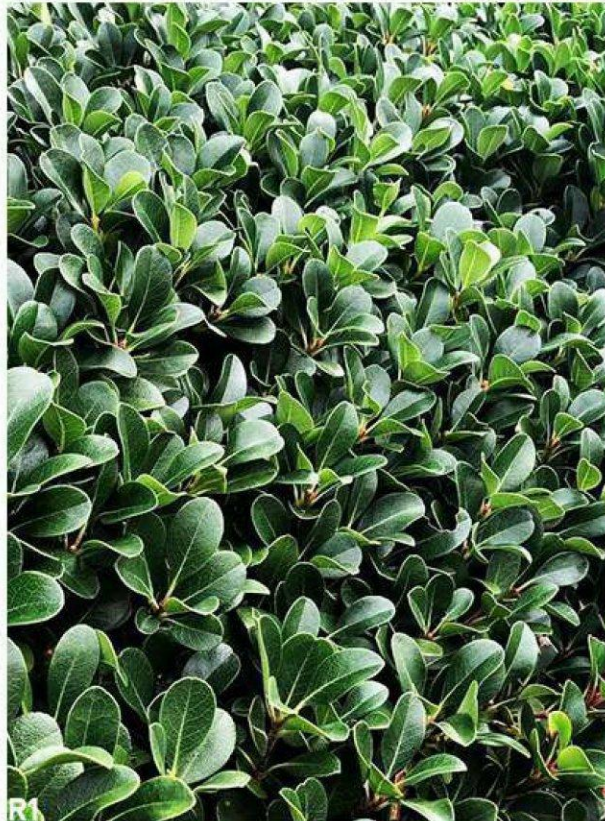
ADVERTISED COPY - CITY OF MONASH
This copied document is made available for the sole purpose of enabling its consideration and review as part of a planning process under the Planning and Environment Act. The document must not be used for any purpose which may breach copyright.



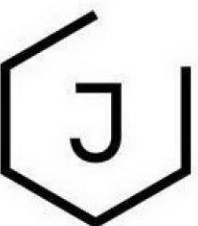
- J1 Juniperus conferta (Trailing Juniper)
- L1 Laurus nobilis 'Flavour Master' Hedge (Dwarf Bay Tree)
- P1 Pandorea jasminoides 'Alba' (White Bower Vine)
- P2 Philodendron japonica 'Xanadu' (Dwarf Philodendron)



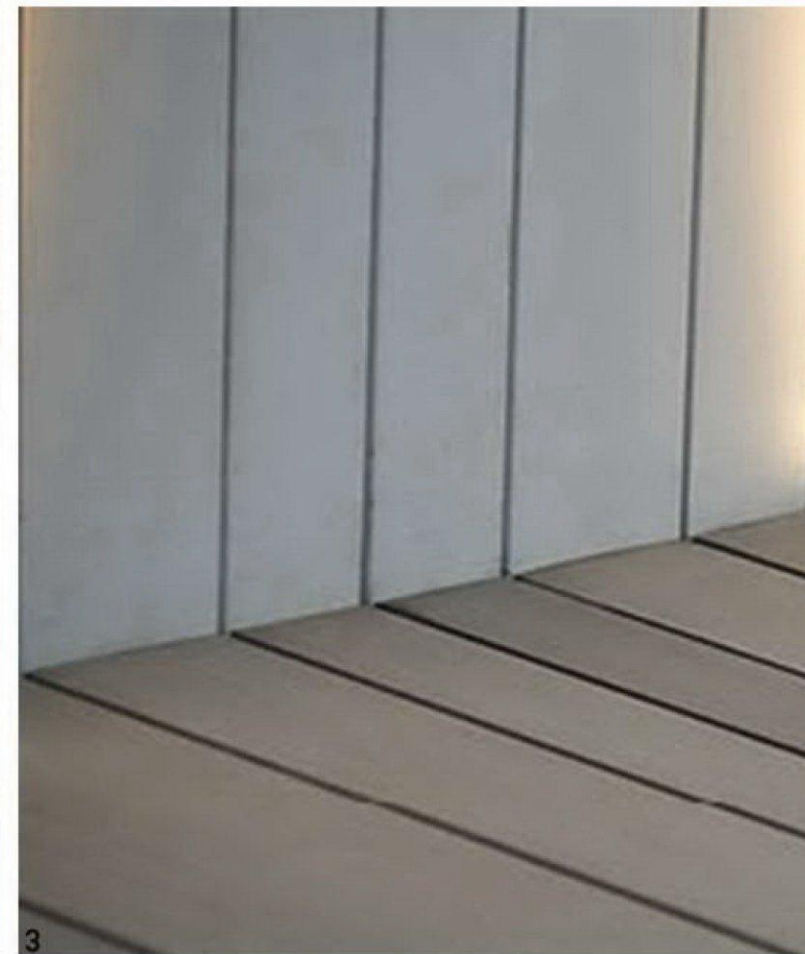
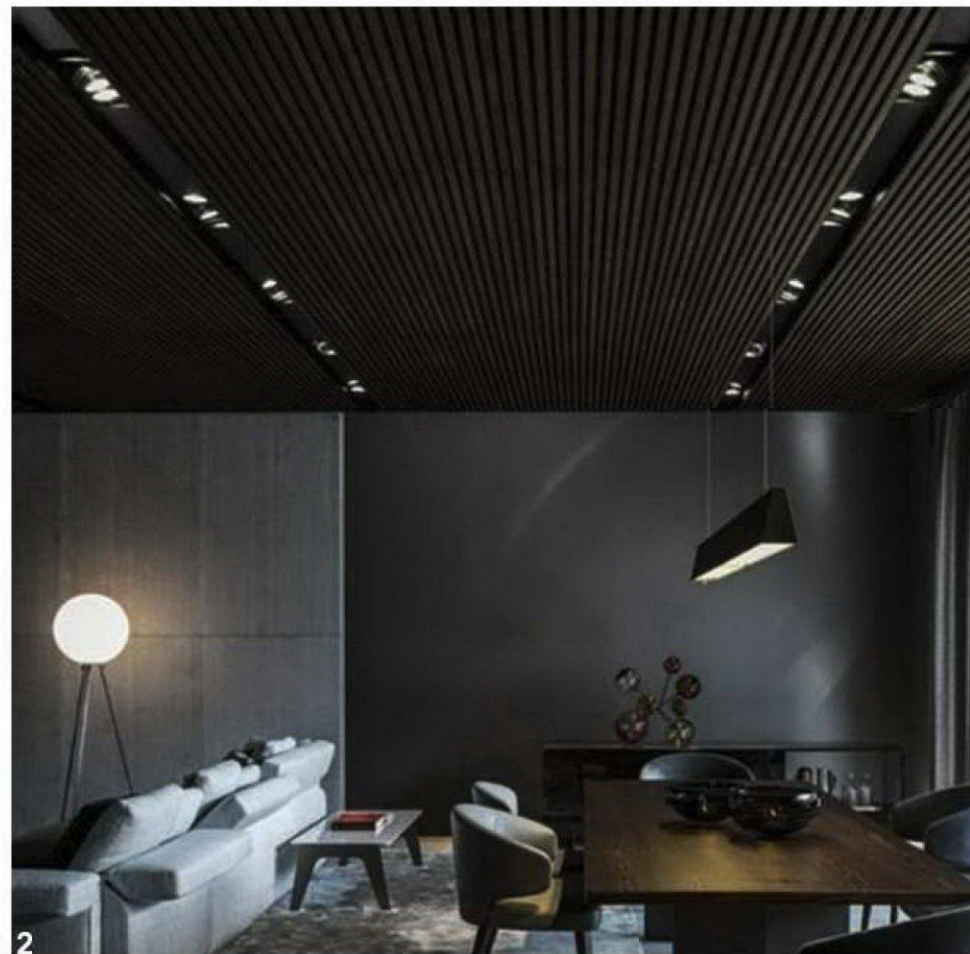
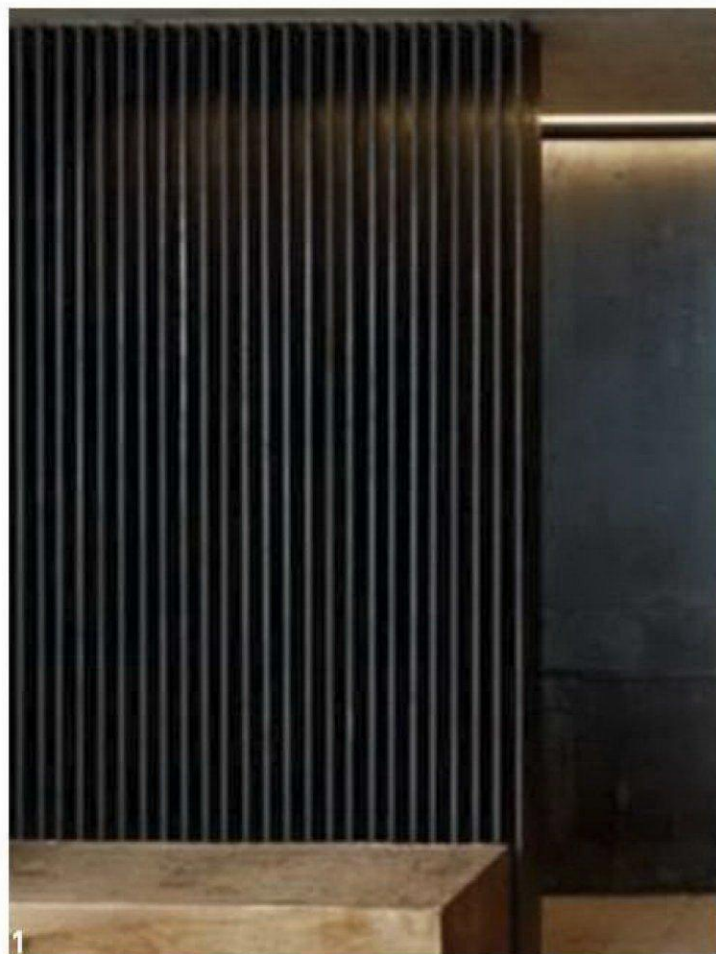
ADVERTISED COPY - CITY OF MONASH
This copied document is made available for the sole purpose of enabling its consideration and review as part of a planning process under the Planning and Environment Act.
The document must not be used for any purpose which may breach copyright.



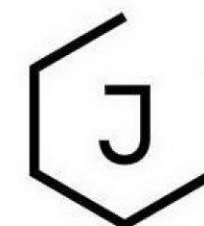
- R1 Rhapsaloe indica 'Spring Pearl' [Compact White Indian Hawthorn]
- R2 Rosmarinus officinalis [Trailing Rosemary]
- T1 Trachelospermum asiaticum [Groundcover Star Jasmine]
- V1 Vitis vinifera [Ornamental Grape]



ADVERTISED COPY - CITY OF MONASH
This copied document is made available for the sole purpose of enabling its consideration and review as part of a planning process under the Planning and Environment Act.
The document must not be used for any purpose which may breach copyright.



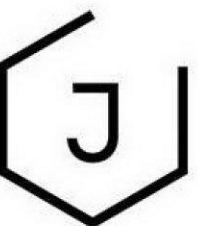
- 1 Metal Batten Screens
- 2 Metal Batten Ceiling
- 3 Esthtec Composite Timber Decking and Cladding - Varied Board Widths



ADVERTISED COPY - CITY OF MONASH
This copied document is made available for the sole purpose of enabling its consideration and review as part of a planning process under the Planning and Environment Act.
The document must not be used for any purpose which may breach copyright.



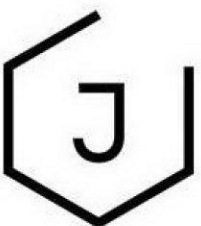
- 1 Off-Form Concrete Seating
- 2 Atelier Vierkant 'U' and 'UF' Pots
- 3 Modular GRC Planters



ADVERTISED COPY - CITY OF MONASH
This copied document is made available for the sole purpose of enabling its consideration and review as part of a planning process under the Planning and Environment Act.
The document must not be used for any purpose which may breach copyright.



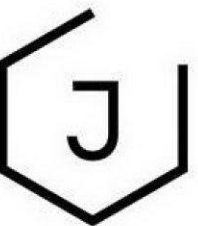
- 1 Climbers on Facade
- 2 Ronstan 'X-Tend 60' Tensioned Stainless Steel Mesh
- 3 Glazed Wind Screen



ADVERTISED COPY - CITY OF MONASH
This copied document is made available for the sole purpose of enabling its consideration and review as part of a planning process under the Planning and Environment Act. The document must not be used for any purpose which may breach copyright.



- 1 Dekton 'Radium' Dark Charcoal Porcelain Bench Tops
- 2 Technifirma 'Skywalker' Pale Grey Porcelain Tiling
- 3 Outdoor Fireplace

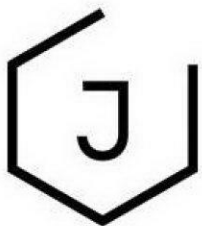


ADVERTISED COPY - CITY OF MONASH
This copied document is made available for the sole purpose of enabling its consideration and review as part of a planning process under the Planning and Environment Act. The document must not be used for any purpose which may breach copyright.



1 Paola Lenti 'Portofino' Outdoor Dining Setting

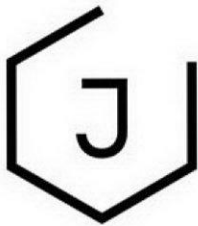
251-261 Springvale Road, Glen Waverley - **Outdoor Furniture [1]**



ADVERTISED COPY - CITY OF MONASH
This copied document is made available for the sole purpose of enabling its consideration and review as part of a planning process under the Planning and Environment Act. The document must not be used for any purpose which may breach copyright.



- 1 Paola Lenti 'Ami' Armchairs
- 2 Paola Lenti 'Ami' Sofa
- 3 Paola Lenti 'Heron' Bar Stools



ADVERTISED COPY - CITY OF MONASH
This copied document is made available for the sole purpose of enabling its consideration and review as part of a planning process under the Planning and Environment Act.
The document must not be used for any purpose which may breach copyright.



- 1 Paola Lenti 'Sabi' Modular Sofa
- 2 Paola Lenti 'Heron' Coffee Tables
- 3 Paola Lenti 'Strap' Side Tables

