

Detailed resident courtyard planting and informal seating.



Detailed entry planting and minor level change.



Lush and textured central courtyard planting.



Semi transparent fencing to street frontages.



Hedging concealing boundaries fence.



Central courtyard amenity with grass mound

LEGEND

-  **PROPOSED HEDGE 1**
Refer to planting schedule LSK04
Installed with 225mm topsoil and 75mm mulch
-  **PROPOSED HEDGE 2**
Refer to planting schedule LSK04
Installed with 225mm topsoil and 75mm mulch
-  **PROPOSED GARDEN BED**
300mm high raised planter/planter wall
-  **PROPOSED LAWN**
Insect Turf lawn
-  **CONCRETE PAVEMENT 1**
-  **CONCRETE PAVEMENT 2**
-  **RAINWATER GARDEN**
Refer LSK05 for species
-  **WATER FEATURE**
Raised water features to Form
countertop Refer LSK03 for section
-  **FENCE BOUNDARY**
-  **BORDER HEDGE**

01 Lower Ground Landscape Plan
LSK01 1:250 @ A1 | 1:500 @ A3

52-54 Rathbone Street
Carlton, 3053
Victoria Australia
Telephone: 03 9348 0788
Fax: 03 9348 1965
Email: info@landdesign.com.au
www.landdesign.com.au

PROJECT: Mount Waverley Retirement & Childcare Development

DRAWING: Lower Ground Landscape Concept Ground Plane

THE CONTRACTOR MUST VERIFY ALL DIMENSIONS ON SITE PRIOR TO COMMENCING ANY WORK OR MAKING ANY SHOP DRAWINGS. REQUIRED DIMENSIONS SHOULD BE USED IN PREFERENCE TO SCALED DIMENSIONS. ALL DRAWINGS MAY NOT BE REPRODUCED OR DISTRIBUTED WITHOUT PRIOR PERMISSION FROM THE LANDSCAPE ARCHITECT. THIS DRAWING REMAINS COPYRIGHT AND THE PROPERTY OF THE LANDSCAPE ARCHITECT.

SCALE: 1:250 @ A1 | 1:500 @ A3

DRAWN BY: HM / SB CHKD: GH

DATE: 21/02/2020

REV: A - Revised Entry

DRG NO.: LSK01

G:\DWG\19\MOUNT WAVERLEY RETIREMENT-2419



Tall canopy tree for neighbourhood context



Medium deciduous tree for scale and solar access



Upright deciduous trees for scale and light



Small trees as garden feature









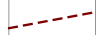







Upright light canopy courtyard trees.



Camellia Hedge with seasonal change

LEGEND

-  PROPOSED HEDGE 1
Refer to planting schedule LSK04
Irrigated with 225mm topsoil and 75mm mulch
-  PROPOSED HEDGE 2
Refer to planting schedule LSK04
Irrigated with 225mm topsoil and 75mm mulch
-  PROPOSED GARDEN BED
300mm high raised planter/planter wall
-  PROPOSED LAWN
Tussock Turf lawn
-  CONCRETE PAVEMENT 1
-  CONCRETE PAVEMENT 2
-  RAINWATER GARDEN
Refer LSK05 for species
-  WATER FEATURE
Raised water feature to Form
country Entry Refer LSK03 for section
-  FENCE BOUNDARY
-  LARGE TREE
-  MEDIUM TREE
-  SMALL TREE
-  SMALL FEATURE TREE
-  BORDER HEDGE

01 Lower Ground Landscape Plan
LSK02 1:250 @ A1 | 1:500 @ A3

52-54 Rathbone Street
Carlton, 3053
Victoria Australia
Telephone: 03 9348 0788
Fax: 03 9348 1985
Email: info@landdesign.com.au
www.landdesign.com.au

PROJECT: **Mount Waverley Retirement & Childcare Development**

DRAWING: **Lower Ground Landscape Concept Tree Canopy**

SCALE: 1:250 @ A1 | 1:500 @ A3

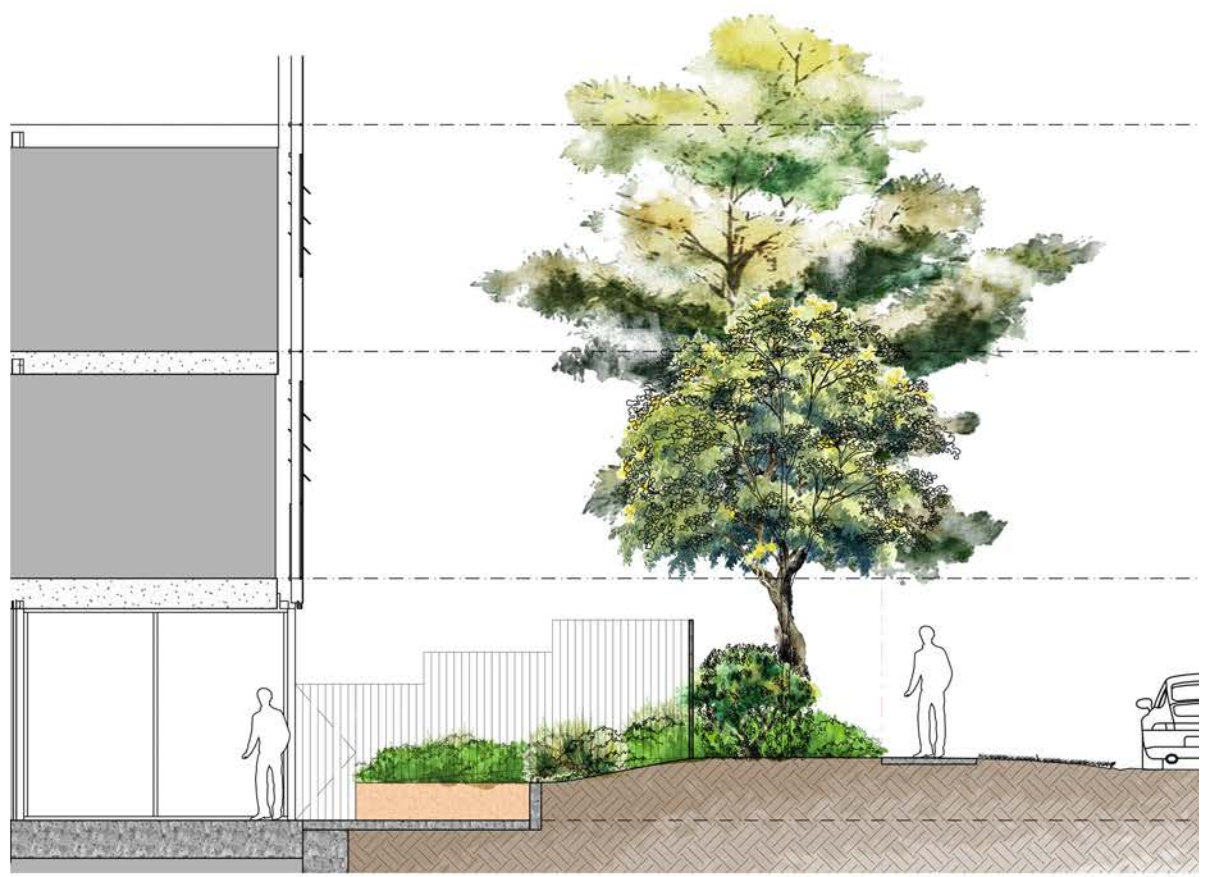
DRAWN BY: HM / SB CHKD: GH

DATE: 21/02/2020

REV: A - Revised Entry

DRG NO: LSK02

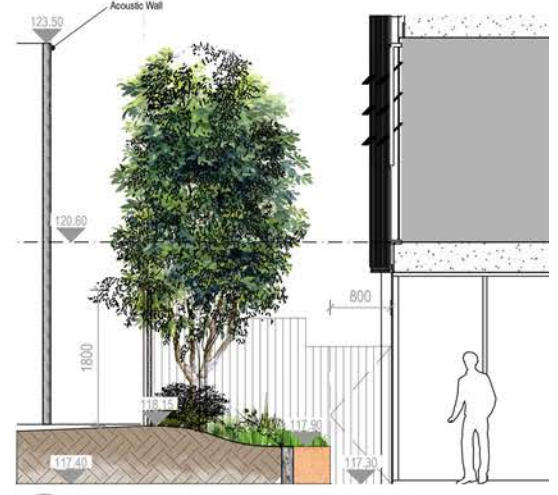
G:\DWG\19\MOUNT WAVERLEY RETIREMENT-2419



01 Blackburn Road Section
LSK03 1:100 @ A1 | 1:200 @ A3



02 Residential Boundary Section
LSK03 1:50 @ A1 | 1:100 @ A3



03 Monash Freeway Boundary Section
LSK03 1:50 @ A1 | 1:100 @ A3



04 Courtyard Mound / Water Feature Section
LSK03 1:50 @ A1 | 1:100 @ A3



05 Level 03 Landscape Plan
LSK03 1:250 @ A1 | 1:500 @ A3



06 Level 06 Landscape Plan
LSK03 1:250 @ A1 | 1:500 @ A3

LEGEND

- Low Shrubs / Groundcovers. Refer Planting schedule LSK04 for species. Irrigated with 225mm topsoil and 75mm mulch.
- Raised Planter. 500mm High raised planter

52-54 Rathbone Street
Carlton, 3053
Victoria Australia
Telephone: 03 9348 0788
Fax: 03 9348 1965
Email: info@landdesign.com.au
www.landdesign.com.au

PROJECT: **Mount Waverley Retirement & Childcare Development**

DRAWING: **Sections, Levels 03 and 06 Terraces Landscape Concept**

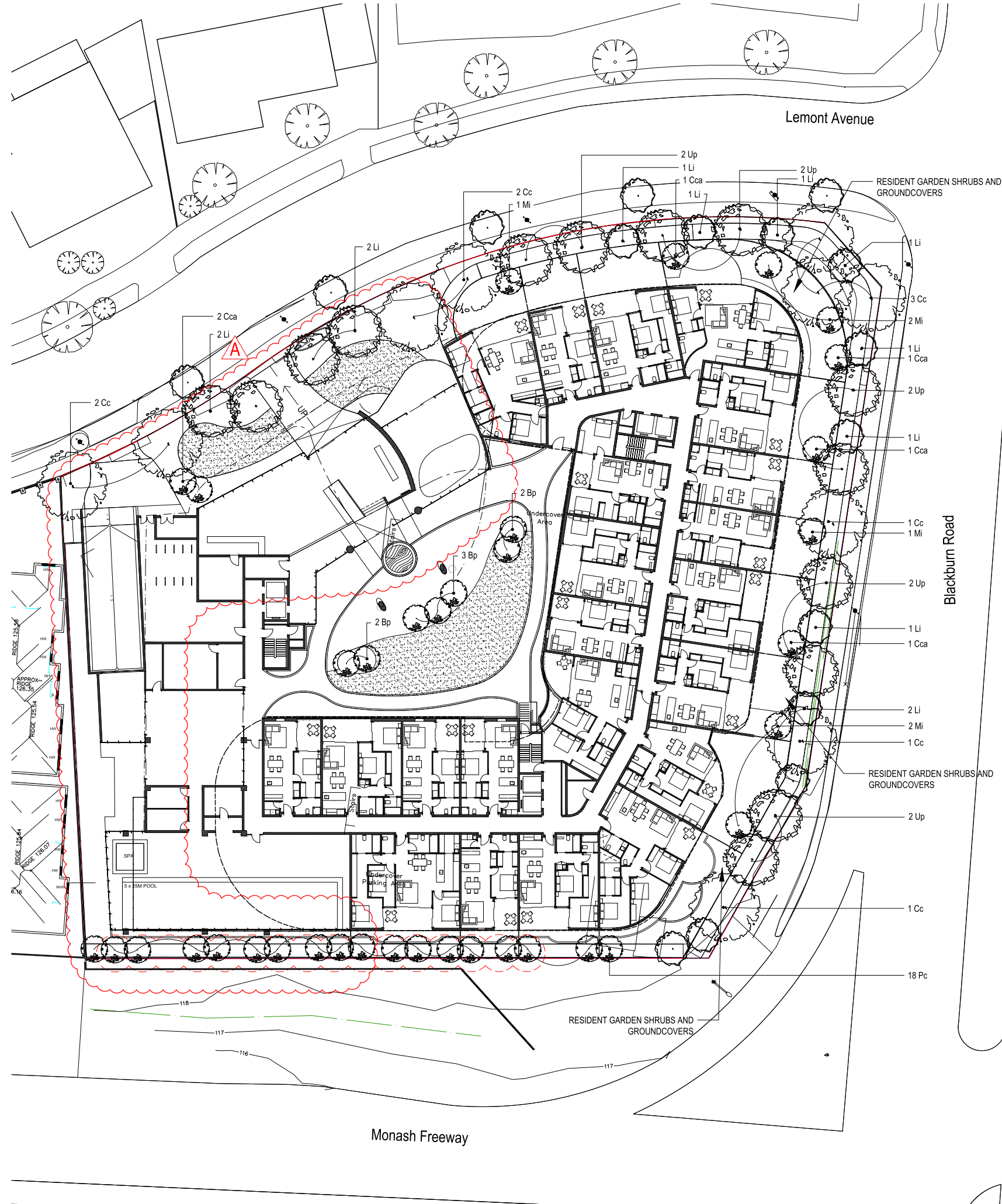
THE CONTRACTOR MUST VERIFY ALL DIMENSIONS ON SITE PRIOR TO COMMENCING ANY WORK OR MAKING ANY SHOP DRAWINGS. MEASURED DIMENSIONS SHOULD BE USED IN PREFERENCE TO SCALED DIMENSIONS. ALL DRAWINGS MAY NOT BE REPRODUCED OR DISTRIBUTED WITHOUT PRIOR PERMISSION FROM THE LANDSCAPE ARCHITECT. THIS DRAWING REMAINS THE PROPERTY OF THE LANDSCAPE ARCHITECT.

SCALE	1:250 @ A1 1:500 @ A3
DRAWN BY	HM / SB CHKD GH
DATE	21/02/2020
REV	A - Revised Entry
DRG NO.	LSK03

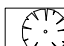

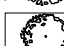
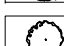
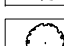
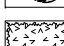

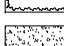



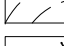
G:\DWG\19\MOUNT WAVERLEY RETIREMENT-2419

MT WAVERLEY PLANT SCHEDULE - TREES

CODE	BOTANICAL NAME	COMMON NAME	POT SIZE	APPROX SIZE (given site conditions)	DENSITY/SIZE	TOTAL NO.
LARGE TREES						
Cc	<i>Corymbia citriodora</i>	Dwarf Lemon Scented Gum	45 Ltr	12 - 15m x 8m	as indicated	10
MEDIUM TREES						
Up	<i>Ulmus parvifolia</i>	Chinese Elm	45 Ltr	7-8m x 8-10m	as indicated	10
SMALL TREES						
Cca	<i>Cercis canadensis</i>	Forest Pansy	45 Ltr	4m x 3m	as indicated	6
Li	<i>Lagerstroemia indica x fauriei</i>	Natchez Crepe Myrtle	45 Ltr	6m x 6m	as indicated	13
Md	<i>Malus ioensis plena</i>	Iowa Crab Apple	45 Ltr	4m X 3m	as indicated	6
UPRIGHT DECIDUOUS TREES						
Bp	<i>Betula pendula</i>	Silver Birch	45 Ltr	12m x 9m	as indicated	7
Pc	<i>Pyrus calleryana</i>	Ornamental Pear	45 Ltr	8m x 6m	as indicated	19
						TOTAL: 71
STREET TREES (SUBJECT TO COUNCIL APPROVAL)						
Lemont Ave Road Trees						TOTAL: 5



LEGEND

-  Existing Tree.
Trees to be Retained and Protected.
-  Large Tree.
Proposed Large Canopy tree (8m).
Refer LSK04 for Species Selection.
-  Medium Tree.
Proposed Medium Feature tree (6m).
Refer LSK04 for Species Selection.
-  Small Tree.
Proposed Small Feature tree (4m).
Refer LSK04 for Species Selection.
-  Upright Deciduous Tree.
Proposed Small Upright tree (3m).
Refer LSK04 for Species Selection.
-  Hedges
Refer Planting schedule LSK04 for species.
Irrigated with 225mm topsoil and 75mm mulch.
-  Low Shrubs / Groundcovers.
Refer Planting schedule LSK04 for species.
Irrigated with 225mm topsoil and 75mm mulch.
-  Turf.
Instant Turf lawn.
-  Water Feature.
Raised water features to Forecourt / Entry.
Refer LSK03 for Section.
-  Raised Planter.
500mm High raised planter / planter wall.
-  Mounded Garden
Refer LSK03 for Section.
-  Bicycle Hoops.
Stainless Steel Bicycle hoops.

52-54 Rathbone Street
Carlisle 3053
Victoria Australia
Telephone: 03 9348 2788
Fax: 03 9348 1965
Email: info@landdesign.com.au
www.landdesign.com.au

PROJECT: **Mount Waverley Retirement & Childcare Development**

DRAWING: **Lower Ground Landscape Planting Plan - Trees**

THE CONTRACTOR MUST VERIFY ALL DIMENSIONS ON SITE PRIOR TO COMMENCING ANY WORK OR MAKING ANY SHOP DRAWINGS. DIMENSIONS SHOWN ARE TO BE USED IN PREFERENCE TO SCALED DIMENSIONS. ALL DRAWINGS MAY NOT BE REPRODUCED OR DISTRIBUTED WITHOUT PERMISSION FROM THE LANDSCAPE ARCHITECT. THIS DRAWING REMAINS COPYRIGHT AND THE PROPERTY OF THE LANDSCAPE ARCHITECT.

SCALE	1:250 @ A1 1:500 @ A3
DRAWN BY	HM / SB CHRD GH
DATE	21/02/2020
REV.	A - Revised Entry
DRG NO.	LSK04

G:\DWG\19\MOUNT WAVERLEY RETIREMENT-2419

MT WAVERLEY PLANT SCHEDULE - SHRUBS & GROUNDCOVERS

COURTYARD UNDERCROFT SHRUBS

Aw	<i>Atocasia wentii</i>	New Guinea Shield	20cm	1m x 1m	4/m ²
Am	<i>Acanthus mollis</i>	Bear's Breeches	20cm	1m x 1m	4/m ²
Fj	<i>Fatsia japonica</i>	Paperplant	20cm	1m x 1m	4/m ²
Px	<i>Philodendron 'xanadu'</i>	Xanadu	20cm	1m x 1m	4/m ²

TOTAL: 360

COURTYARD UNDERCROFT GROUNDCOVERS

Ac	<i>Anthropodium cirratum</i>	New Zealand Rock Lily	14cm	0.5m x 0.5m	6/m ²
Cm	<i>Clivia miniata</i>	Bush Lily	14cm	0.5m x 0.5m	6/m ²
Vo	<i>Viola odorata</i>	Sweet Violet	14cm	0.2m x 0.6m	6/m ²

TOTAL: 540

RESIDE

Aa	<i>Agave attenuata</i>	Foxtail Agave	20cm	1m x 1m	4/m ²
Nd	<i>Nandina domestica</i>	Sacred Bamboo	20cm	0.75m x 0.75m	4/m ²
Cs	<i>Camellia sasanqua</i>	Camellia	20cm	3m x 1.5m	4/m ²

TOTAL: 350

RESIDENT GARDENS GROUNDCOVERS

Ac	<i>Anthropodium cirratum</i>	New Zealand Rock Lily	14cm	0.5m x 0.5m	6/m ²
Lm	<i>Liriope muscari 'Just Right'</i>	Lily Turf	14cm	0.75m x 0.75m	6/m ²
Aam	<i>Acmena smithii 'Allyn Magic'</i>	Lilly Pilly	14cm	0.5m x 0.5m	6/m ²
Rfc	<i>Rosa 'Flower Carpet'</i>	Shrub Rose	14cm	0.25m x 0.75m	6/m ²

TOTAL: 1575

PUBLIC GARDEN SHRUBS

Alm	<i>Acacia cognata 'Limelight'</i>	Bower Wattle	20cm	1.75m x 1.75m	4/m ²
Cs	<i>Camellia sasanqua</i>	Camellia	20cm	2.5m x 1.5m	4/m ²
Cra	<i>Callistemon viminalis 'Red Alert'</i>	Red Alert Bottlebrush	20cm	1.75m x 1.75m	4/m ²
Hq	<i>Hydrangea quercifolia</i>	Oakleaf Hydrangea	20cm	1.5m x 1.5m	4/m ²
Ri	<i>Rhapitopsis indica 'Cosmic White'</i>	Indian Hawthorn Cult	20cm	1.75m x 1.75m	4/m ²
Vdf	<i>Viburnum odoratissimum 'Dense Fence'</i>		20cm	1.75m x 1.75m	4/m ²

TOTAL: 3015

PUBLIC GARDEN GROUNDCOVERS

Ac	<i>Anthropodium cirratum</i>	New Zealand Rock Lily	14cm	0.5m x 0.5m	6/m ²
Aam	<i>Acmena smithii 'Allyn Magic'</i>	Lilly Pilly	14cm	0.5m x 0.5m	6/m ²
Dlj	<i>Dianella caerulea 'Little Jess'</i>	Blue Flax Lily	14cm	0.5m x 0.5m	6/m ²
LI	<i>Lomandra longifolia 'Tanika'</i>	Basket Grass	14cm	0.75m x 0.75m	6/m ²
Rfc	<i>Rosa 'Flower Carpet'</i>	Shrub Rose	14cm	0.25m x 0.75m	6/m ²
Cm	<i>Clivia miniata</i>	Bush Lily	14cm	0.5m x 0.5m	6/m ²

TOTAL: 1690

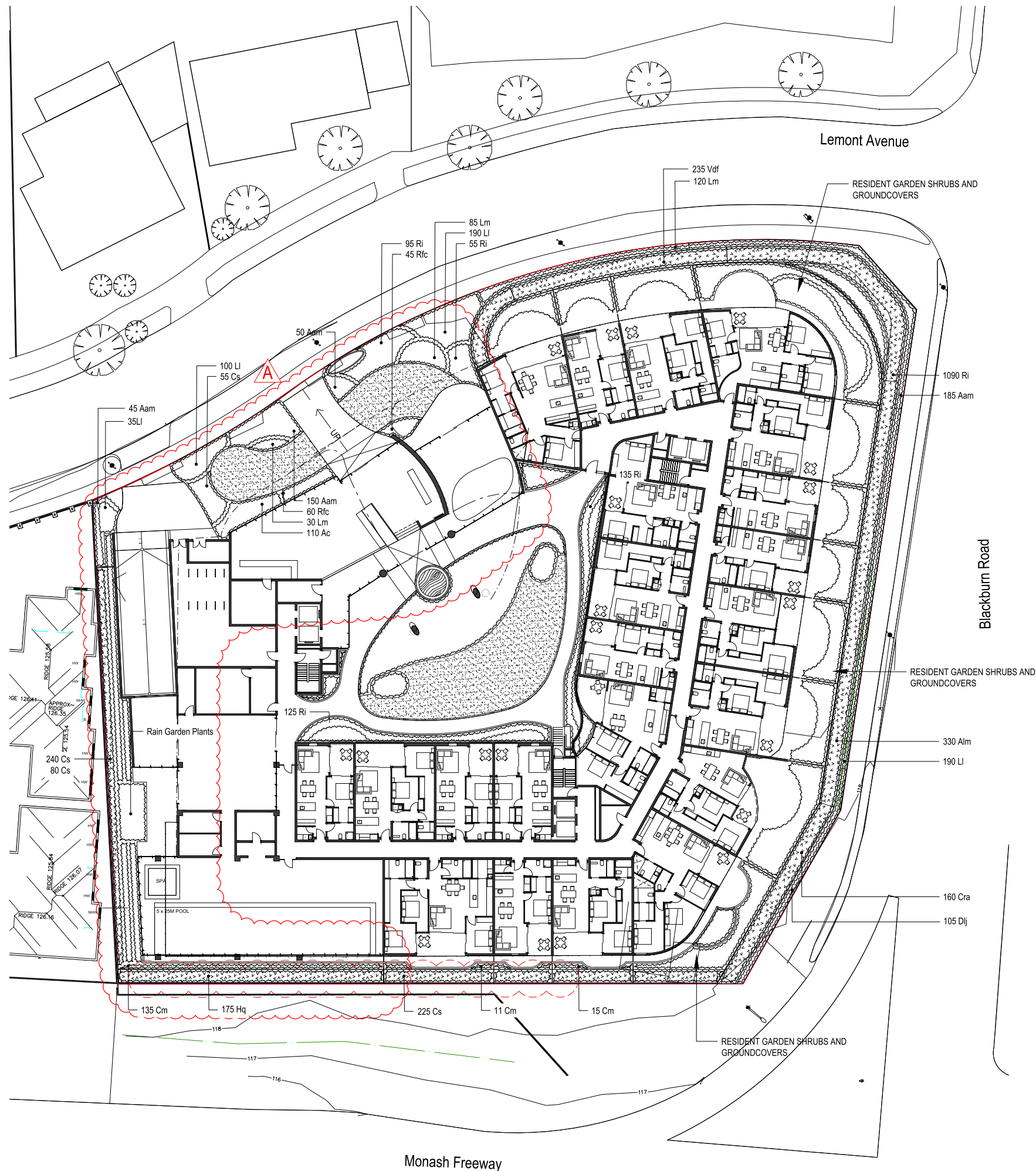
ROOF TERRACES

Aa	<i>Agave attenuata</i>	Foxtail Agave	20cm	1m x 1m	4/m ²
LI	<i>Lomandra longifolia 'Tanika'</i>	Basket Grass	14cm	0.75m x 0.75m	6/m ²

Also included - seasonal available edible plants

RAIN GARDEN

Dlj	<i>Dianella caerulea 'Little Jess'</i>	Blue Flax Lily	14cm	0.5m x 0.5m	6/m ²
In	<i>Isolepis nodosa</i>	Knobby Club Rush	14cm	0.5m x 0.5m	6/m ²
Wf	<i>Westringia fruticosa</i>	Coastal Rosemary		0.5m x 0.5m	4/m ²



LEGEND

- Hedged Plants. Refer Planting schedule LSK04 for species. Irrigated with 225mm topsoil and 75mm mulch.
- Low Shrubs / Groundcovers. Refer Planting schedule LSK04 for species. Irrigated with 225mm topsoil and 75mm mulch.
- Grass. Instant Turf lawn.
- Water Feature. Raised water features to Forecourt / Entry. Refer LSK03 for Section.
- Raised Planter. 500mm High raised planter / planter wall.
- Mounded Garden / Turf. Refer LSK03 for Section.
- Bicycle Racks. Stainless Steel Bicycle hoops.

land design Partnership
 52-54 Rathbone Street
 Carlton, 3053
 Victoria Australia
 Telephone: 03 9348 0788
 Fax: 03 9348 1965
 Email: info@landdesign.com.au
 www.landdesign.com.au

PROJECT: Mount Waverley Retirement & Childcare Development

DRAWN BY: Lower Ground Landscape Planting Plan - Groundcovers and Shrubs

THE CONTRACTOR MUST VERIFY ALL DIMENSIONS ON SITE PRIOR TO COMMENCING ANY WORK OR MAKING ANY SHOP DRAWINGS. DIMENSIONS SHOULD BE USED IN PREFERENCE TO SCALED DIMENSIONS. ALL DRAWINGS MAY NOT BE REPRODUCED OR DISTRIBUTED WITHOUT PRIOR PERMISSION FROM THE LANDSCAPE ARCHITECT. THIS DRAWING REMAINS COPYRIGHT AND THE PROPERTY OF THE LANDSCAPE ARCHITECT.

SCALE	1:250 @ A1 1:500 @ A3
DRAWN BY	SB CHKD GH
DATE	21/02/2020
REV.	A - Revised Entry
DRG NO.	LSK05

G:\DWG\19\MOUNT WAVERLEY RETIREMENT-2419

No.	Common Name (Botanic name)	Age	Height x Width (m)	TPZ (m radius)	SRZ (m radius)	Retained/Removed
1	Silver Birch (Betula pendula)	Semi-mature	6 x 5	2.0	1.8	Removed
2	Silver Birch (Betula pendula)	Semi-mature	6 x 4	2.0	1.9	Removed
3	Bracelet Honey-myrtle (Melaleuca armillaris)	Semi-mature	4 x 6	3.6	2.2	Removed
4	Privet (Ligustrum sp.)	Semi-mature	6 x 6	3.9	2.4	Removed
5	Weeping Bottlebrush (Callistemon viminalis)	Semi-mature	5 x 4	2.2	2.0	Removed
6	Willow Myrtle (Agonis flexuosa)	Early-mature	7 x 6	6.7	2.6	Removed
7	Cotoneaster (Cotoneaster sp.)	Early-mature	5 x 8	3.8	2.4	Removed
8	European Ash (Fraxinus excelsior)	Maturin g	9 x 11	5.8	2.6	Removed
9	Smooth Arizona Cypress (Hesperocyparis glabra)	Semi-mature	4 x 3	2.0	1.6	Removed
10	Callery's Pear (Pyrus calleryana)	Semi-mature	9 x 6	2.9	1.9	Removed
11	Callery's Pear (Pyrus calleryana)	Semi-mature	9 x 6	2.8	1.9	Removed
12	Callery's Pear (Pyrus calleryana)	Semi-mature	6 x 5	2.3	1.8	Removed
13	Callery's Pear (Pyrus calleryana)	Semi-mature	9 x 5	3.1	2.0	Removed
14	Chinese Hawthorn (Photinia serratifolia)	Semi-mature	4 x 4	2.7	1.8	Removed
15	Bracelet Honey-myrtle (Melaleuca armillaris)	Over-mature	7 x 9	6.5	3.2	Retained
16	Bracelet Honey-myrtle (Melaleuca armillaris)	Over-mature	4 x 4	2.4	2.0	Retained
17	Bracelet Honey-myrtle (Melaleuca armillaris)	Over-mature	7 x 10	3.1	2.6	Retained
18	Bracelet Honey-myrtle (Melaleuca armillaris)	Early-mature	8 x 7	3.6	2.4	Retained
19	Bracelet Honey-myrtle (Melaleuca armillaris)	Semi-mature	8 x 8	3.5	2.1	Retained
20	Bracelet Honey-myrtle (Melaleuca armillaris)	Semi-mature	8 x 9	3.7	2.4	Retained
21	Bracelet Honey-myrtle (Melaleuca armillaris)	Early-mature	7 x 6	4.2	2.5	Retained
22	Kanooka (Tristania laurina)	Semi-mature	4 x 5	3.4	2.1	Retained
23	Chinese Hawthorn (Photinia serratifolia)	Semi-mature	4 x 5	2.6	1.9	Retained
24	Purple Leaf Cherry Plum (Prunus cerasifera 'Nigra')	Semi-mature	3 x 2	2.0	1.5	Retained
25	Chinese Hawthorn (Photinia serratifolia)	Young	1 x 1	2.0	1.5	Removed
26	Maple (Acer sp.)	Young	1 x 1	2.0	1.5	Removed
27	Chinese Hawthorn (Photinia serratifolia)	Early-mature	4 x 8	3.5	2.0	Retained
Grp 1	Leyland Cypress (Xcupressocyparis leylandii)	Semi-mature	-9 x 6	3.0	2.0	Removed



LEGEND

- Existing Tree. Trees to be Retained and Protected.
- Existing Tree Removed. Tree to be removed as specified.
- Title Boundary

01 Tree Removal and Protection Plan
LSK06 1:250 @ A1 | 1:500 @ A3

land design Partnership
52-54 Rathbone Street, Carlton, 3053, Victoria Australia
Telephone: 03 9348 0788, Fax: 03 9348 1965, Email: info@landdesign.com.au, www.landdesign.com.au

PROJECT: **Mount Waverley Retirement & Childcare Development**

DRAWING: **Tree Removal / Removed Plan**

SCALE: 1:250 @ A1 | 1:500 @ A3

DRAWN BY: HM / SB, CHKD: GH

DATE: 21/02/2020

REV: A - Revised Entry

DRG NO: LSK06

G:\DWG\19\MOUNT WAVERLEY RETIREMENT-2419