



**SPECIFICATION NOTES**

**Soil Preparation**  
 Crushed rock, concrete subgrade and any other material restrictive to plant growth (e.g. large rocks) shall be removed from the site of all planting beds and semi-enclosed trees. All trees to be removed shall be stump ground and all rootstock/vegetative spoil is to be removed from site. Existing top soil in planting areas is to be assessed so that it does not require additional compaction from site machinery and so that no rubble or building supplies are stored in these areas.

No imported top soil is to be used within the root zones of trees to be protected. Any preparation of existing soil for planting within these areas is to be done by hand only. Holes (e.g. as the result of plant removal) and uneven soil levels may be prepared using topsoil as specified below.

Any imported topsoil is to be free of weeds, rubble and other materials damaging to plant growth and is to be of a medium texture (sandy loam) with a pH of 6.0-7.0. Top soil is to be laid over a prepared subgrade which has had any materials damaging to plant growth (e.g. rubble and large rocks) removed, spread to the appropriate depth and cultivated into the existing soil to a minimum depth of 100mm.

Imported top soil is to be lightly and uniformly compacted in 150mm layers to a minimum depth of 100mm on lawn areas and 300mm on excavated planting beds.

**Weed Removal**  
 All weeds shall be thoroughly removed. All vegetative material, including roots and stumps of non-sapwood perennials and woody suckering weeds, is to be removed or appropriately controlled using chemical means. The stumps of non-suckering woody perennials are to be stump ground. All vegetative material shall be appropriately removed off site in a manner which will not allow their re-establishment elsewhere. Any chemical controls are to be used in accordance with manufacturer's instructions and standard occupational health and safety procedures.

Care must be taken to ensure that all trees to be retained are not damaged during weed removal. This also implies that any herbicides used are suitable for use around the vegetation to be retained.

**Planting**  
 Planting shall be carried out using accepted horticultural practices with all plants conforming to the species, size and quantities indicated on the Landscape Plan and Plant Schedule. Plants shall be thoroughly watered prior to planting and if the planting soil is very dry then the planting hole is to be filled with water and allowed to drain before planting.

All plants shall be appropriately hardened off in the nursery. Use plants with the following characteristics: Large healthy root systems with no evidence of root cut or pot bound restriction or damage; vigorous, well established, free from disease and pests and of good form, consistent with the species or variety.

Planting holes for shrubs and groundcovers are to be of minimum size 75mm larger than the planting pot in all directions. Semi-enclosed tree planting holes are to be the same depth as the rootball and 2-3 times its diameter, with the top of the rootball being at grade. A 75mm high berm is to be constructed at edge of rootball to hold water. All plants are to be thoroughly watered after planting and slow release fertilizer added at the quantities specified by the manufacturer.

**Mulch**  
 Mulch is to be supplied to all garden beds and is to be an organic type laid to a minimum depth of 75mm, consisting of fine dark coloured chipped or shredded pine bark or hardwood with no more than 5% by volume (excluding stem fines). The average size of the woodchip must be approximately 10mm x 20mm x 5mm and the maximum length is not to exceed 25mm. Mulch shall be free of damage (other such as soil, weeds and sticks) and is to be stockpiled and thoroughly weathered prior to delivery. Mulch is to be kept back 100mm from the stems of all plants to prevent collar rot.

**Aggregate Gravel Surface**  
 Aggregate gravel is to be installed where shown comprising of a 50mm layer of gravel (17mm granular) over a 10mm sand or similar, no finer than a sieve number of 75mm deep grade compacted Fine Crushed Rock. The subgrade is to be appropriately compacted.

**Timber Edges**  
 Provide 15 x 25mm treated pine edges to all borders between gravel mulch paths and garden beds using 75x25x300mm long treated pine stakes at 1200mm maximum centres. An additional stake is to be provided at pins in the plants.

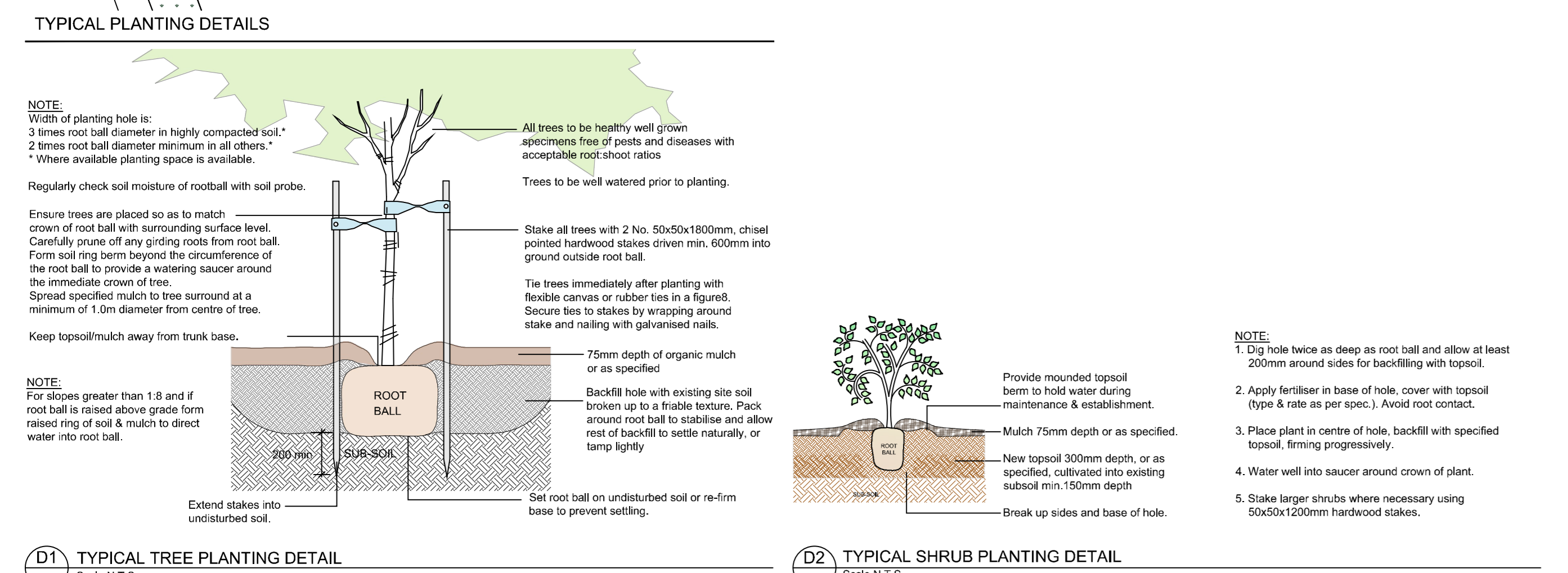
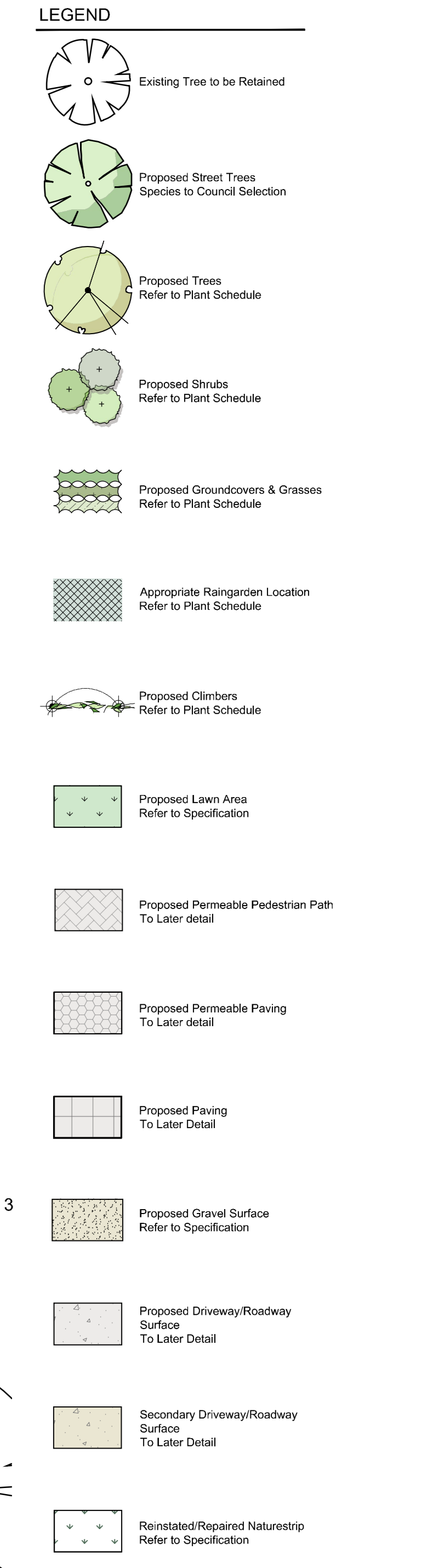
**Irrigation**  
 An approved drip irrigation system is to be supplied to all landscape areas. An approved pop-up spray system is to be supplied to all lawn areas. It is the responsibility of the contractor to ensure that all irrigation meets manufacturer's specifications. The system is to be connected to mains supply and include a rain-outlet of device. All dripline is to be buried with a 50mm cover and shall be anchored at regular intervals to ensure the tubing cannot be dislodged.

**Lawn Turf**  
 "Staple" Sun Leaf Buffalo turf (or similar) is to be supplied to lawn areas as shown. Turf is to be supplied by a specialist grower and is not to be allowed to dry out between cutting and laying. Turf should be laid in a staggered pattern so that joints are staggered and is to be lightly tamped following laying. All lawn areas are to be thoroughly watered following planting and settled with an appropriate lawn starter at the quantities recommended by the manufacturer.

**Repair/Restoration of Damaged Nature-strips**  
 Nature strips are to be restored to current grades with any depressions filled with topsoil to specifications above and lightly compacted in 100mm layers. Areas are then to be re-seeded using an appropriate and matching turf type and the area fenced off to allow the re-establishment of lawn. Re-seeded areas are to be well irrigated and the area supplied with a slow release fertilizer at the quantities recommended by the manufacturer.

Any areas of lawn which have failed to germinate (achieve an evenly green 95% covering of a consistent height) are to be re-seeded within one month of original sowing date.

**Plant Establishment Period**  
 There shall be a 13 week Plant Establishment Period following the approval of Practical Completion by the responsible authority. During this period the landscape contractor shall make good all defects in the scope of works. Maintenance and Establishment means the care and maintenance of the contact area by accepted horticultural practices, as well as rectifying any defects that become apparent in the work under normal use. This shall include, but shall not be limited to watering, fertilising, weeding, pruning, pest and disease control, cultivation, re-staking and replacement of any plants that fail with plants of the same species and colour.



**PLANTING SCHEDULE**

SYM	BOTANICAL NAME	COMMON NAME	DIE NEW*	HEIGHT X WIDTH AT MATURITY	MIN SUPPLY SIZE	QTY
<b>TREES</b>						
AOG	<i>Acer rubrum</i> 'October Glory'	Red Maple 'October Glory'	D/EX	12 x 9m	50cm2 20ml	8
CeN	<i>Corymbia avicaria</i> 'Nana'	Bloodwood	EN	10 x 6m	50cm2 20ml	14
Es	<i>Callistemon salignus</i>	Yellow Bottlebrush	EN	7 x 4m	30cm2 20ml	5
Ei	<i>Eucalyptus macrocarpa</i>	White Gum	EN	20 x 15m	30cm2 20ml	20
Es	<i>Eucalyptus scoparia</i>	Wallangarra White Gum	EN	10 x 6m	50cm2 20ml	16
Hb	<i>Halimolobos laurifolia</i> 'Red Pokers'	Red Pokers Halimolobos	EN	4 x 3m	50cm2 20ml	28
LxB	<i>Lagerströmia indica</i> s.l. 'Rivers' 'Silver'	Silver Crape Myrtle	D/EX	7 x 5m	50cm2 20ml	6
SIS	<i>Syzygium banksianum</i> 'Sweetgum'	Sweetgum/Walking Lily/Myrtle	EN	10 x 5-8m	50cm2 20ml	3
Tt	<i>Trochodendron araliifolium</i> 'Luscious'	Luscious Karoo/Water Gum	EN	8 x 5m	30cm2 20ml	12
						<b>TOTAL 112</b>
<b>SHRUBS</b>						
Cr	<i>Cornus reflexa</i>	Common Cornus	EN	1 x 1 m	140mm pot	
Dv	<i>Dodonaea viscosa</i>	Sticky Hop bush	EN	1.5 x 1.3m	140mm pot	
Gr	<i>Gardenia jasminoides</i>	Large-Scented Gardenia	EX/EN	1.5 x 1m	140mm pot	
Mp	<i>Moraea paniculata</i>	Orange Jasmine	EX/EN	2 x 1m (1800mm)	200mm pot	
Pm	<i>Philotheca myrsinoides</i>	Wax Flower	EN	1.5 x 1.5m	140mm pot	
Rc	<i>Rhipidaphne caroliniana</i>	Seaberry/Gabbaroo	EN	2 x 1.1.5m	140mm pot	
SchB	<i>Syzygium australe</i> 'Bath Christmas'	Bath Christmas Lilybilly	EN	2.3 x 1.2m	200mm pot	
						<b>TOTAL 10</b>

SYM	BOTANICAL NAME	COMMON NAME	DIE NEW*	HEIGHT X WIDTH AT MATURITY	MIN SUPPLY SIZE	QTY
<b>GROUNDCOVERS</b>						
Bb	<i>Bulbine bulbosa</i>	Bulbine Lily	EN	0.2-0.5 x 0.3m	140mm pot	
BBD	<i>Brachycome multifida</i> 'Break O Day'	'Break O Day' Cut-leaf Daisy	EN	0.3 x 0.4m	140mm pot	
Ca	<i>Chrysanthemum apiculatum</i>	Common Everlasting	EN	0.5 x 0.8m	140mm pot	
Da	<i>Dianella arvensis</i>	Black Anther Flax Lily	EN	0.5 x 0.5m	140mm pot	
DcB	<i>Dianella caerulea</i> 'Cassa Blue'	Cassa Blue Flax Lily	EN	0.5 x 0.4m	140mm pot	
Di	<i>Dianella laevis</i>	Pale Flax Lily	EN	1 x 1-1.5m	140mm pot	
Fb	<i>Ficinia nodosa</i>	Knobby Club-rush	EN	0.5-1.5 x 0.5-1m	140mm pot	
Kp	<i>Koeleria paniculata</i>	Running Postman	EN	0.1 x 0.2m	140mm pot	
Lj	<i>Lomandra longifolia</i>	Spiry-headed Mat-rush	EN	1 x 1-1.5m	140mm pot	
LrL	<i>Lomandra longifolia</i> 'Hyella'	Navya Mat-rush	EN	0.8-0.9 x 0.8-0.9m	140mm pot	
Mp	<i>Mitrasacme paniculata</i>	Crooping Bloodball	EN	0.2 x 1.3m	140mm pot	
Pt	<i>Poa bulbifera</i>	Tussock Grass	EN	0.8 x 0.8m	140mm pot	
Sv	<i>Scaevola Moorea Clusters'</i>	Maurea Clusters Fan Flower	EN	0.3 x 0.8m	140mm pot	
Vh	<i>Vilfa hederacea</i>	Native Violet	EN	0.15 x Spreading	140mm pot	
Wb	<i>Wandoozia stricta</i>	Tall Bluebell	EN	0.4-0.9 x 0.3-0.6m	140mm pot	
						<b>TOTAL 20</b>
<b>CLIMBERS</b>						
Af	<i>Aphanopetalum resinatum</i>	Gum Vine	EN	Climber	140mm pot	
Hb	<i>Hardenbergia violacea</i>	False Gardenia/Purple Coral	EN	Climber/Climber	140mm pot	
Pv	<i>Panicum paniculata</i>	Wings Wenge Vine	EN	Twining Climber	140mm pot	
Pt	<i>Parthenocissus tricuspidata</i>	Boston Ivy	D/EX	Self-clinging Climber	140mm pot	
						<b>TOTAL 4</b>

\*D/EX = Deciduous/Evergreen      \*NE/EN = Native/Exotic