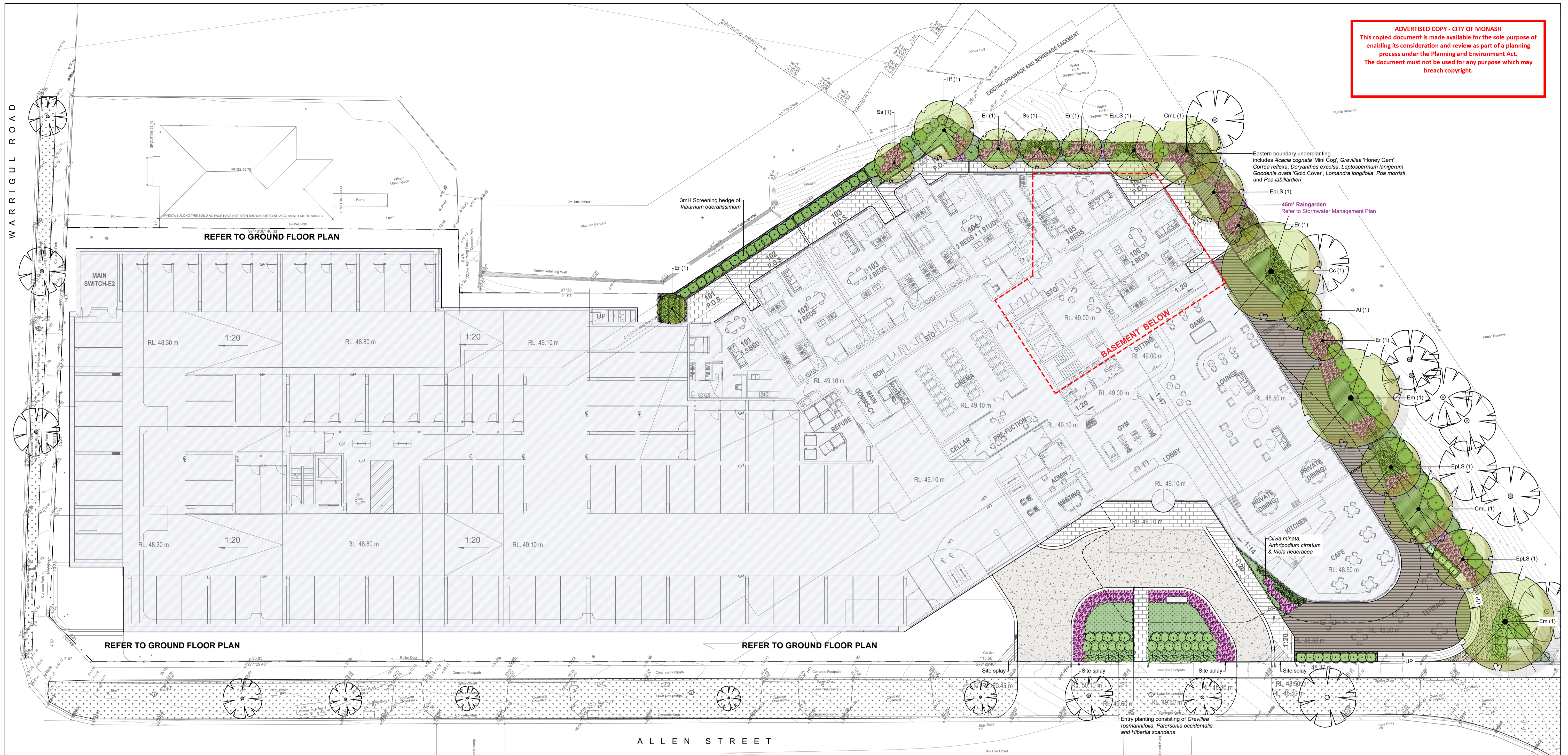


ADVERTISED COPY - CITY OF MONASH
 This copied document is made available for the sole purpose of enabling its consideration and review as part of a planning process under the Planning and Environment Act. The document must not be used for any purpose which may breach copyright.



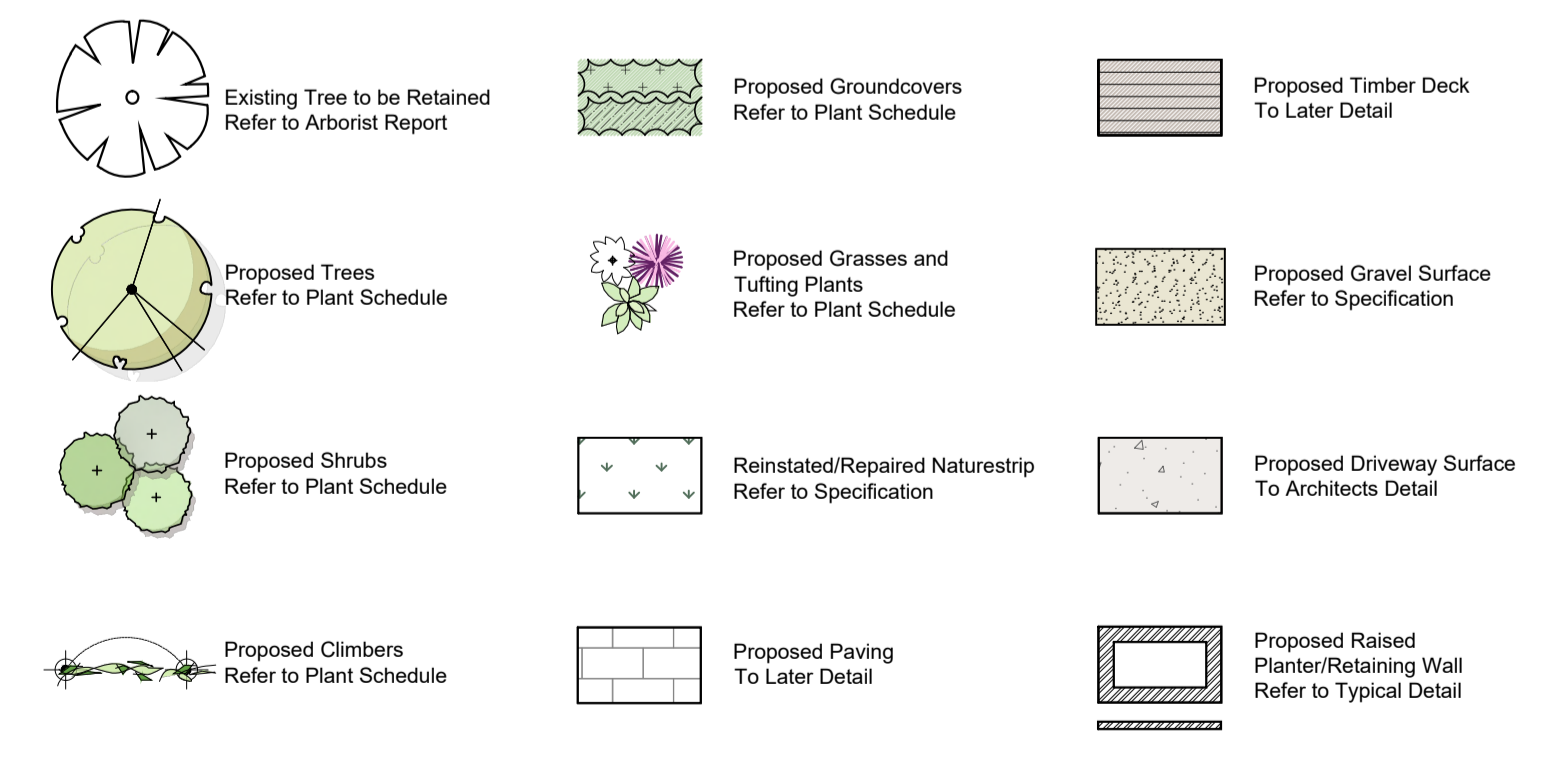
PLANT SCHEDULE

SYM	BOTANICAL NAME	COMMON NAME	D/E N/Ex*	HEIGHT X WIDTH AT MATURITY	MIN SUPPLY SIZE	QTY
TREES						
Al	<i>Allocasuarina littoralis</i>	Black Sheoak	EN	6 x 3m	27L	1
Cc	<i>Corymbia citriodora</i>	Lemon-scented Gum	EN	18 x 10m	52L	1
CmL	<i>Corymbia maculata</i> 'Low anna'	Low anna Spotted Gum	EN	10 x 7m	52L	2
Er	<i>Elaeocarpus reticulatus</i>	Blueberry Ash	EN	8 x 4m	27L	5
Em	<i>Eucalyptus melliodora</i>	Yellow Box	EN	18 x 10m	52L	2
EpLS	<i>Eucalyptus pauciflora</i> 'Little Snow nar	Dw arf Snow Gum	EN	8 x 6m	52L	4
Hf	<i>Hymenosporum flavum</i>	Native Frangipani	EN	8 x 5m	27L	1
Ss	<i>Stenocarpus sinuatus</i>	Firewheel Tree	EN	8 x 4m	27L	2
TOTAL						18
SHRUBS						
AcMc	<i>Acacia cognata</i> 'Mini Cog'	Dw arf River Wattle 'Mini Cog'	EN	0.8 x 1.8m	200mm pot	
Be	<i>Banksia ericifolia</i>	Heath Banksia	EN	3 x 3m	200mm pot	
Cr	<i>Correa reflexa</i>	Common Correa	EN	1 x 1 m	200mm pot	
De	<i>Doryanthes excelsa</i>	Gymea Lily	EN	2.5 x 1.5m	200mm pot	
GHS	<i>Grevillea</i> 'Honey Gem'	Honey Gem Grevillea	EN	3 x 2-3m	200mm pot	
Li	<i>Leptospermum lanigerum</i>	Woolly Tea-tree	EN	2-4 x 1-3m	200mm pot	
Vo	<i>Viburnum odoratissimum</i>	Sweet Viburnum	E/Ex	3 x 1.2m (clipped)	300mm pot	
TOTAL						

*D/E = Deciduous/Evergreen N/Ex = Native/Exotic

SYM	BOTANICAL NAME	COMMON NAME	D/E N/Ex*	HEIGHT X WIDTH AT MATURITY	MIN SUPPLY SIZE	QTY
GROUNDCOVERS						
Go	<i>Goodenia ovata</i> 'Gold Cover'	Gold Cover Goodenia	EN	0.3 x 1.5m	140mm pot	
Ac	<i>Arthropodium cirratum</i>	Renga Lily	E/Ex	0.7 x 0.7m	140mm pot	
Cm	<i>Clivia miniata</i>	Clivia	E/Ex	0.6 x 0.6m	140mm pot	
Dt	<i>Dianella tasmanica</i>	Tasman Flax Lily	EN	0.6-1.5 x 0.5-2m	140mm pot	
GPRM	<i>Grevillea 'Poorinda Royal Mantle'</i>	Groundcover Grevillea	EN	0.3 x 4m	140mm pot	
Hs	<i>Hibertia scandens</i>	Guinea Flow er	EN		140mm pot	
H/M	<i>Hardenbergia violacea</i> 'Meema'	Meema Purple Coral Pea	EN	0.3-0.45 x 1-2m	140mm pot	
LgEG	<i>Liriope gigantea</i> 'Evergreen Giant'	Evergreen Giant Lily-turf	E/Ex	0.6 x 0.6m	140mm pot	
LiP	<i>Libertia paniculata</i>	Grass Flag	EN	0.5 x 0.5m	140mm pot	
Li	<i>Lomandra longifolia</i>	Spiny-headed Mat-rush	EN	1 x 1-1.5m	140mm pot	
Lp	<i>Limonium perezii</i>	Sea Lavender	E/Ex	0.6 x 0.6m	140mm pot	
Po	<i>Paterosonia occidentalis</i>	Long-leaf Purple Flag	EN	0.3 x 0.5m	140mm pot	
Ps	<i>Poa sieberiana</i>	Grey Tussock Grass	EN	0.5 x 0.5m	140mm pot	
Ta	<i>Trachelospermum asiaticum</i>	Yellow Star Jasmine	E/Ex	0.2 x Spreading	140mm pot	
Vh	<i>Viola hederacea</i>	Native Violet	EN	0.15 x Spreading	140mm pot	
TOTAL						
CLIMBERS						
Fp	<i>Ficus pumila</i>	Climbing Fig	E/Ex	Self-clinging Climber	140mm pot	
TOTAL						

*D/E = Deciduous/Evergreen N/Ex = Native/Exotic



JOHN PATRICK
 LANDSCAPE ARCHITECTS PTY LTD
 324 Victoria Street,
 Richmond, VIC 3121
 T +61 3 9429 4855
 F +61 3 9429 8211
 admin@johnpatrick.com.au
 www.johnpatrick.com.au

REVISION
 A Warrigul Rd / Allen St Interface
 DATE
 29.11.2021
 BY
 MGR

COPYRIGHT
 This drawing must not be copied in whole or in part without the consent of John Patrick Landscape Architects Pty Ltd
 Do not scale off drawings
NOT FOR CONSTRUCTION

CLIENT
EBG

PROJECT
PROPOSED AGED CARE FACILITY
 1 - 9 ALLEN STREET, OAKLEIGH

DRAWING
 Lower Ground Floor Landscape Plan for Town Planning

SCALE
 1:200 @A1

DATE
 SEP 2021

DRAWN
 PK

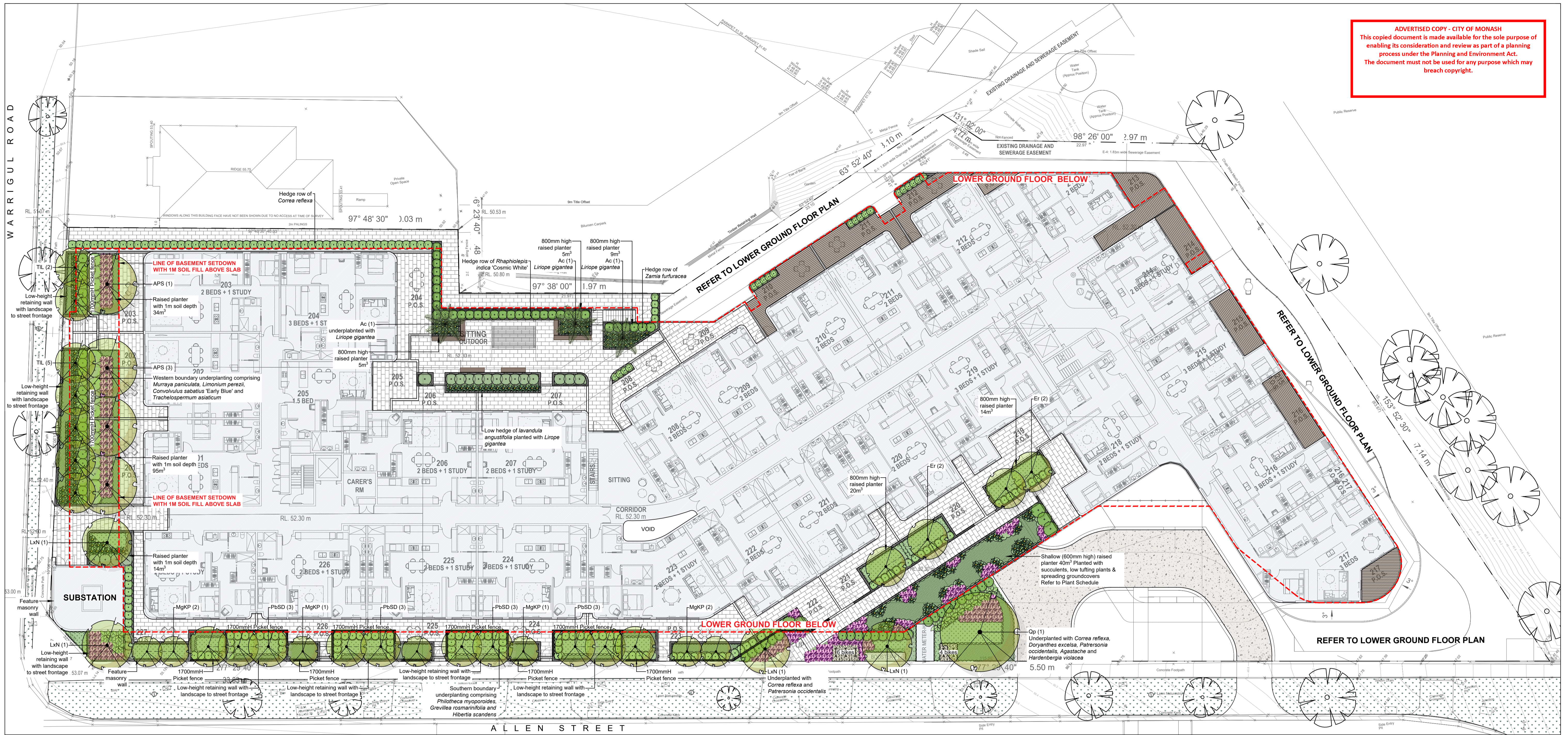
CHECKED

JOB NO
 21-418

DWG NO
 L-TP01 Rev A

CAD FILE
 21-418-L Rev A

ADVERTISED COPY - CITY OF MONASH
 This copied document is made available for the sole purpose of enabling its consideration and review as part of a planning process under the Planning and Environment Act. The document must not be used for any purpose which may breach copyright.



PLANT SCHEDULE

SYM	BOTANICAL NAME	COMMON NAME	DE/NE*	HEIGHT X WIDTH AT MATURITY	MIN SUPPLY SIZE	QTY
TREES						
APS	<i>Acer t. x p. w. arrenred</i> 'Pacific Sunset'	Pacific Sunset Maple	DE/EX	10 x 6m	52L	4
Ac	<i>Archontophoenix cunninghamiana</i>	Bangalow Palm	EN	12 x 3m	52L	3
Er	<i>Elaeocarpus reticulatus</i>	Blueberry Ash	EN	8 x 4m	27L	4
LxN	<i>Lagerstroemia indica</i> x <i>L. faurieri</i> 'Natchez'	Natchez Crepe Myrtle	DE/EX	8 x 5m	52L	4
PbSD	<i>Pyrus betulaeifolia</i> 'South orth Dancer'	Ornamental Pear	DE/EX	7 x 4m	52L	12
MgKP	<i>Magnolia grandiflora</i> 'Kay Parris'	Kay Parris Bull Bay Magnolia	DE/EX	6 x 3m	27L	6
Qp	<i>Quercus paustris</i>	Pin Oak	DE/EX	14 x 8m	52L	1
Tl	<i>Tristanopsis laurina</i> 'Luscious'	Water Gum	EN	8 x 4m	52L	7
					TOTAL	41
SHRUBS						
ASL	<i>Agastache</i> 'Sw eet Lil'	Hummingbird Mint	DE/EX	1.2 x 0.6m	200mm pot	
De	<i>Doryanthes excelsa</i>	Gymea Lily	EN	2.5 x 1.5m	200mm pot	
GrCV	<i>Grevillea rosmarinifolia</i> 'Crimson Villa'	Crimson Villa Rosemary Grevillea	EN	0.8 x 0.8m	200mm pot	
La	<i>Lavandula angustifolia</i>	English Lavender	DE/EX	0.9 x 1.2m	200mm pot	
Mp	<i>Murraya paniculata</i>	Orange Jessamine	DE/EX	2 x 1m (clipped)	300mm pot	
Pal.S	<i>Perovskia atriplicifolia</i> 'Little Spires'	Little Spires Russian Sage	DE/EX	H X Wm	200mm pot	
Pm	<i>Phlotoeca myoporoides</i>	Wax Flow er	EN	1.5 x 1.5m	200mm pot	
RCW	<i>Rhaphiolepis indica</i> 'Cosmic White'	Cosmic White Indian Haw thorn	DE/EX	1.5-2 x 1.5m	200mm pot	
Zl	<i>Zamia furfuracea</i>	Cardboard Sago	DE/EX	1.5 x 2m	200mm pot	
					TOTAL	

*DE = Deciduous/Evergreen NEX = Native/Exotic

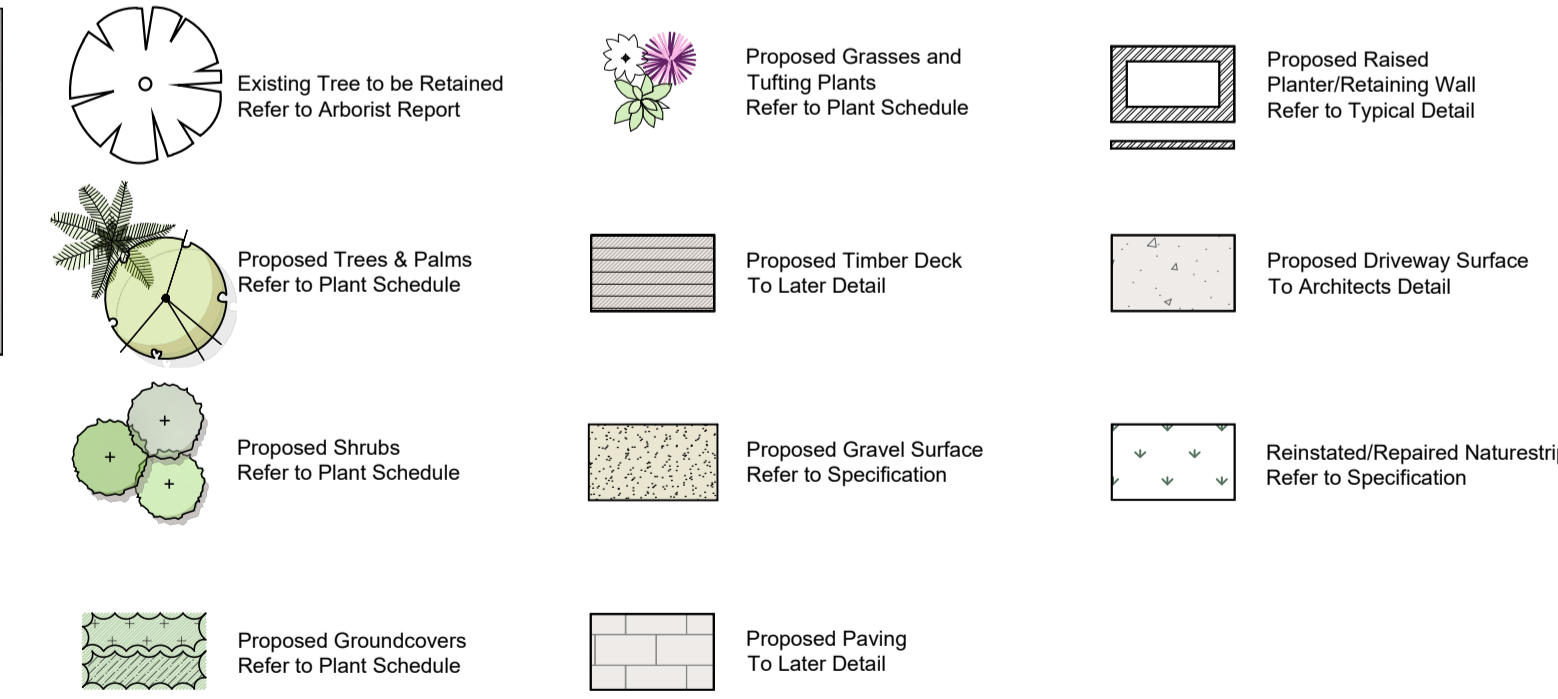
SYM	BOTANICAL NAME	COMMON NAME	DE/NE*	HEIGHT X WIDTH AT MATURITY	MIN SUPPLY SIZE	QTY
GROUNDCOVERS						
Ca	<i>Convolvulus sabatius</i> 'Early Blue'	Early Blue Moroccan Bellflower	DE/EX	0.3 x 1.5m	140mm pot	
DSD	<i>Dreameria PBR</i> 'Sw eet Dreams'	Daydream Sea Thrift	DE/EX	0.5 x 0.5m	140mm pot	
Go	<i>Goodenia ovata</i> 'Gold Cover'	Gold Cover Goodenia	EN	0.3 1.5m	140mm pot	
HWM	<i>Hardenbergia violacea</i> 'Meema'	Meema Purple Coral Pea	EN	0.3-0.45 x 1-2m	140mm pot	
LgEG	<i>Liriope gigantea</i> 'Evergreen Giant'	Evergreen Giant Lily-turf	DE/EX	0.6 x 0.6m	140mm pot	
Po	<i>Paterosnia occidentalis</i>	Long-leaf Purple Flag	EN	0.3 x 0.5m	140mm pot	
Pi	<i>Poa labillardieri</i>	Tussock Grass	EN	0.8 x 0.8m	140mm pot	
Ta	<i>Trachelospermum asiaticum</i>	Yellow Star Jasmine	DE/EX	0.2 x Spreading	140mm pot	
					TOTAL	

*DE = Deciduous/Evergreen NEX = Native/Exotic

SYM	BOTANICAL NAME	COMMON NAME	DE/NE*	HEIGHT X WIDTH AT MATURITY	MIN SUPPLY SIZE	QTY
SHALLOW PLANTERS						
Ag	<i>Agave geminiflora</i>	Tw in Flow er Agave	DE/EX	0.5 x 0.5m	140mm pot	
Co	<i>Cotyledon orbiculata</i>	Pg's Ears	DE/EX	0.2 x 0.6m	140mm pot	
Lf	<i>Lomandra filiformis</i>	Wattle Mat-rush	EN	0.3 x 0.3m	140mm pot	
Pm	<i>Poa morrisii</i>	Velvet Tussock Grass	EN	0.3 x 0.4m	140mm pot	
Ss	<i>Senecio serpens</i>	Blue Chalk Sticks	DE/EX	0.2 x 0.6m	140mm pot	
					TOTAL	

*DE = Deciduous/Evergreen NEX = Native/Exotic

LEGEND



ADVERTISED COPY - CITY OF MONASH
 This copied document is made available for the sole purpose of enabling its consideration and review as part of a planning process under the Planning and Environment Act. The document must not be used for any purpose which may breach copyright.



LINE INDICATES BUILDING OUTLINE FROM
 VCAT REFERENCE NO. P721/2019
 PERMIT APPLICATION NO. TPA/49990

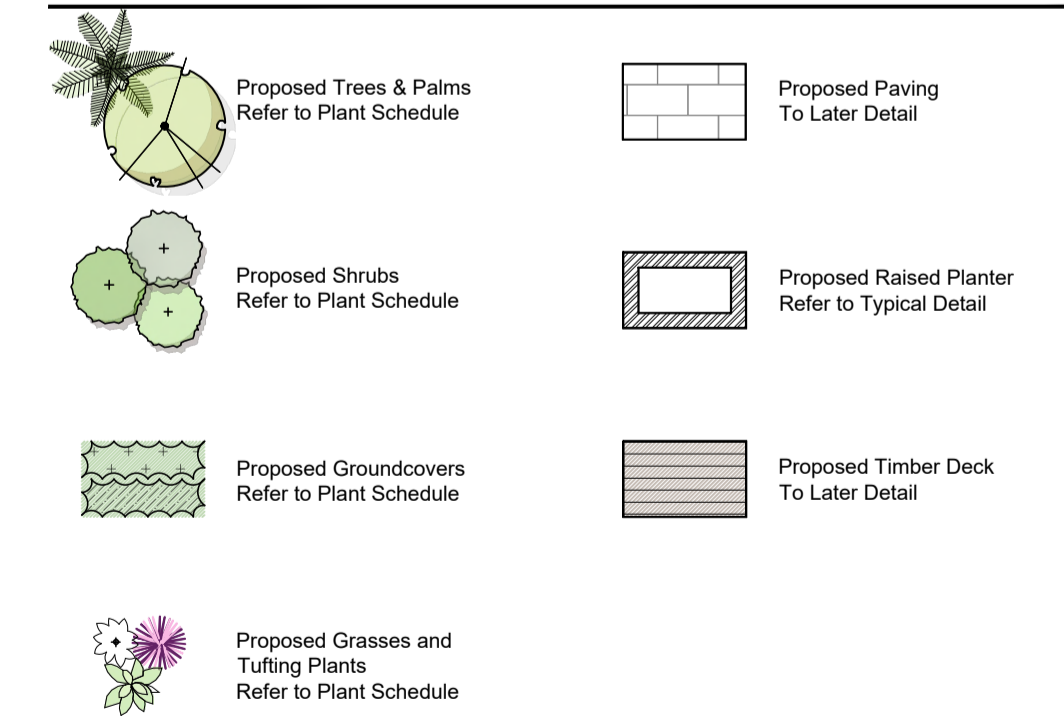
PLANT SCHEDULE

SYM	BOTANICAL NAME	COMMON NAME	D/E/Ex*	HEIGHT X WIDTH AT MATURITY	MIN SUPPLY SIZE	QTY
PALMS						
Cr	<i>Cycas revoluta</i>	Sago Palm	E/Ex	2 x 2m	200mm pot	4
TOTAL						4
SHRUBS						
Mp	<i>Murraya paniculata</i>	Orange Jessamine	E/Ex	2 x 1m (clipped)	200mm pot	
RCP	<i>Rhaphiolepis indica</i>	Oriental Pearl Indian Hawthorn	E/Ex	1 x 1m	200mm pot	
TOTAL						
GROUNDCOVERS						
Ag	<i>Agave geminiflora</i>	Twin Flower Agave	E/Ex	0.5 x 0.5m	140mm pot	
Co	<i>Cotyledon orbiculata</i>	Pig's Ears	E/Ex	0.2 x 0.6m	140mm pot	
Lf	<i>Lomandra filiformis</i>	Wattle Mat-rush	E/N	0.3 x 0.3m	140mm pot	
Pm	<i>Poa morrisii</i>	Velvet Tussock Grass	E/N	0.3 x 0.4m	140mm pot	
Ss	<i>Senecio serpens</i>	Blue Chalk Sticks	E/Ex	0.2 x 0.6m	140mm pot	
TOTAL						

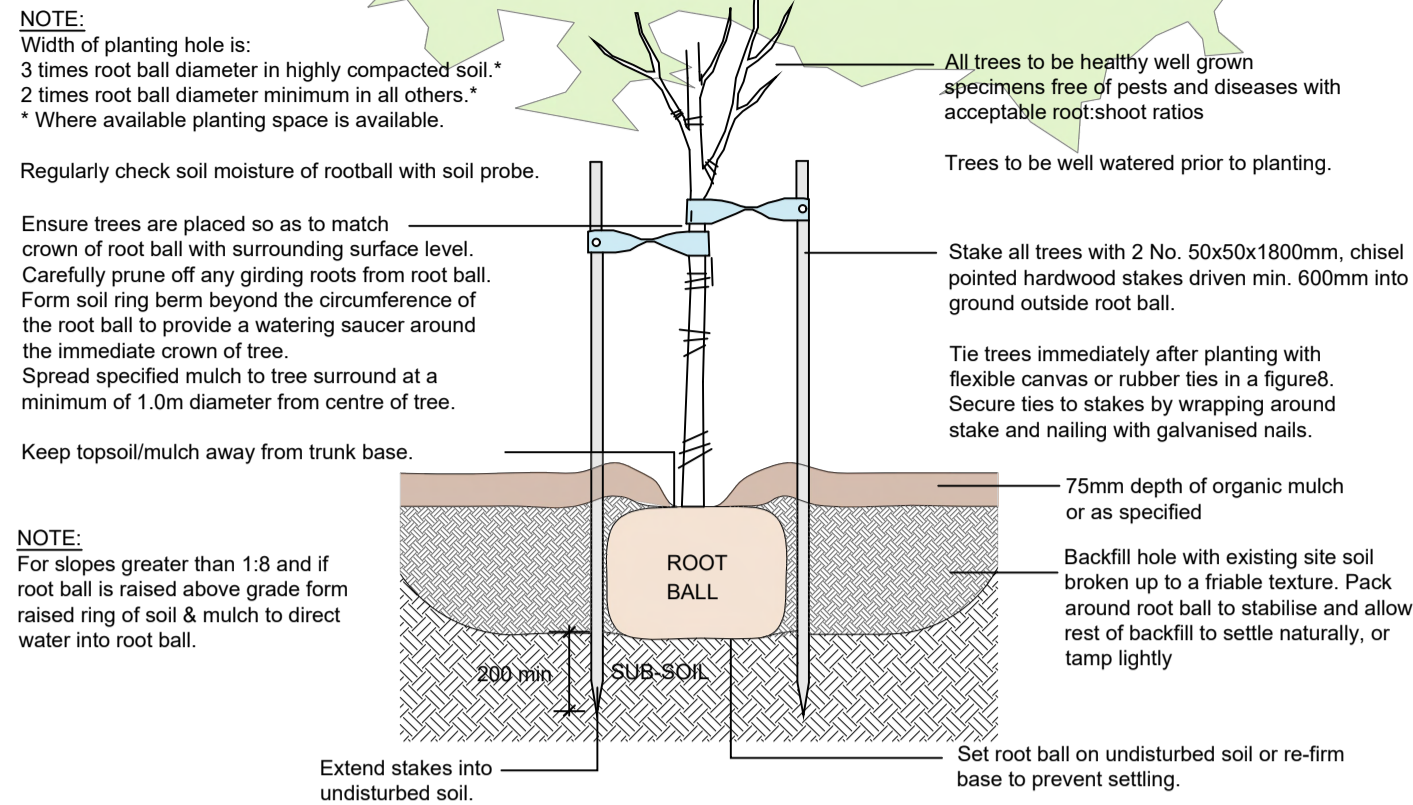
*D/E = Deciduous/Evergreen N/Ex = Native/Exotic

TO LATER DETAIL

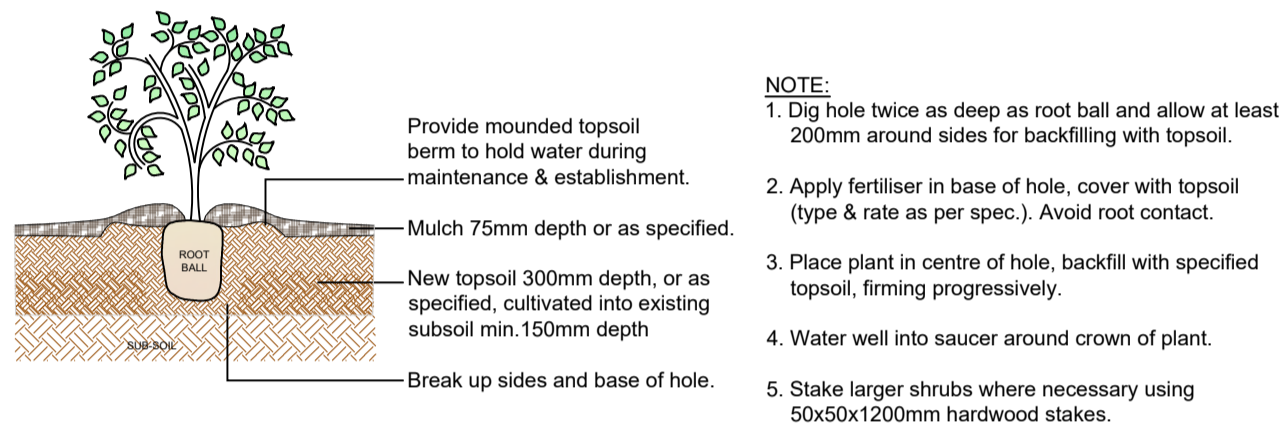
LEGEND



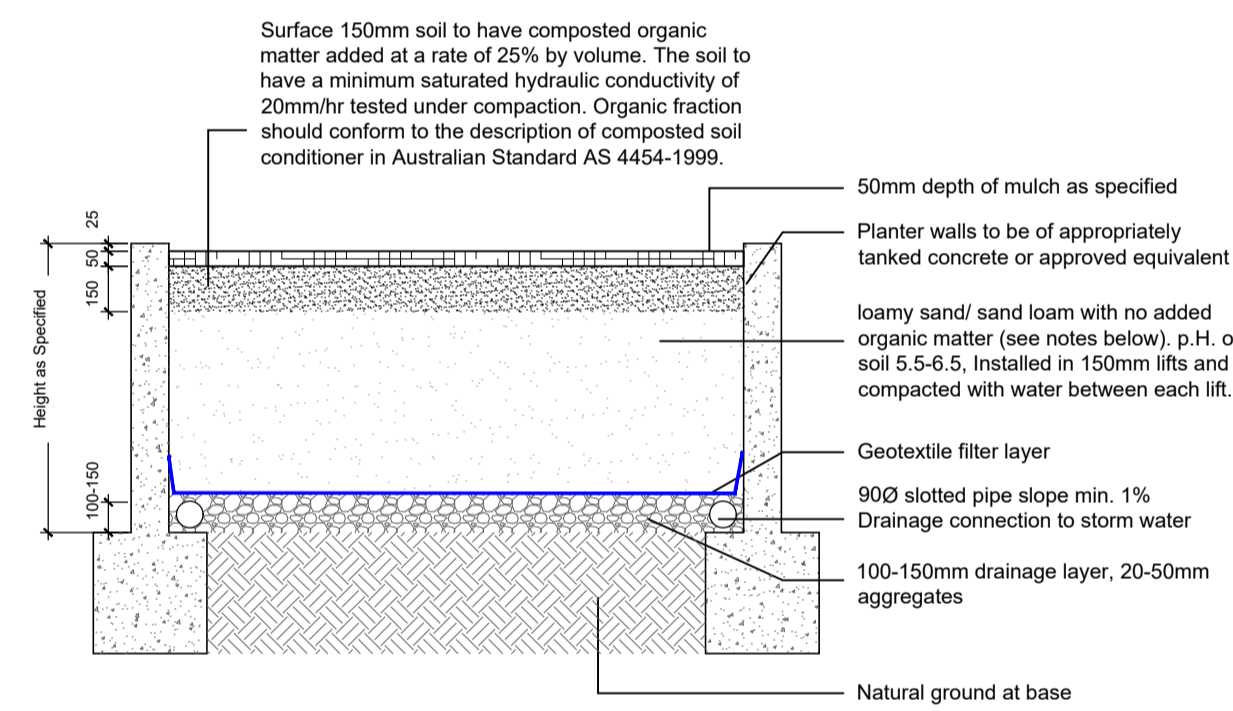
TYPICAL PLANTING DETAILS



D1 TYPICAL TREE PLANTING DETAIL
Scale N.T.S.

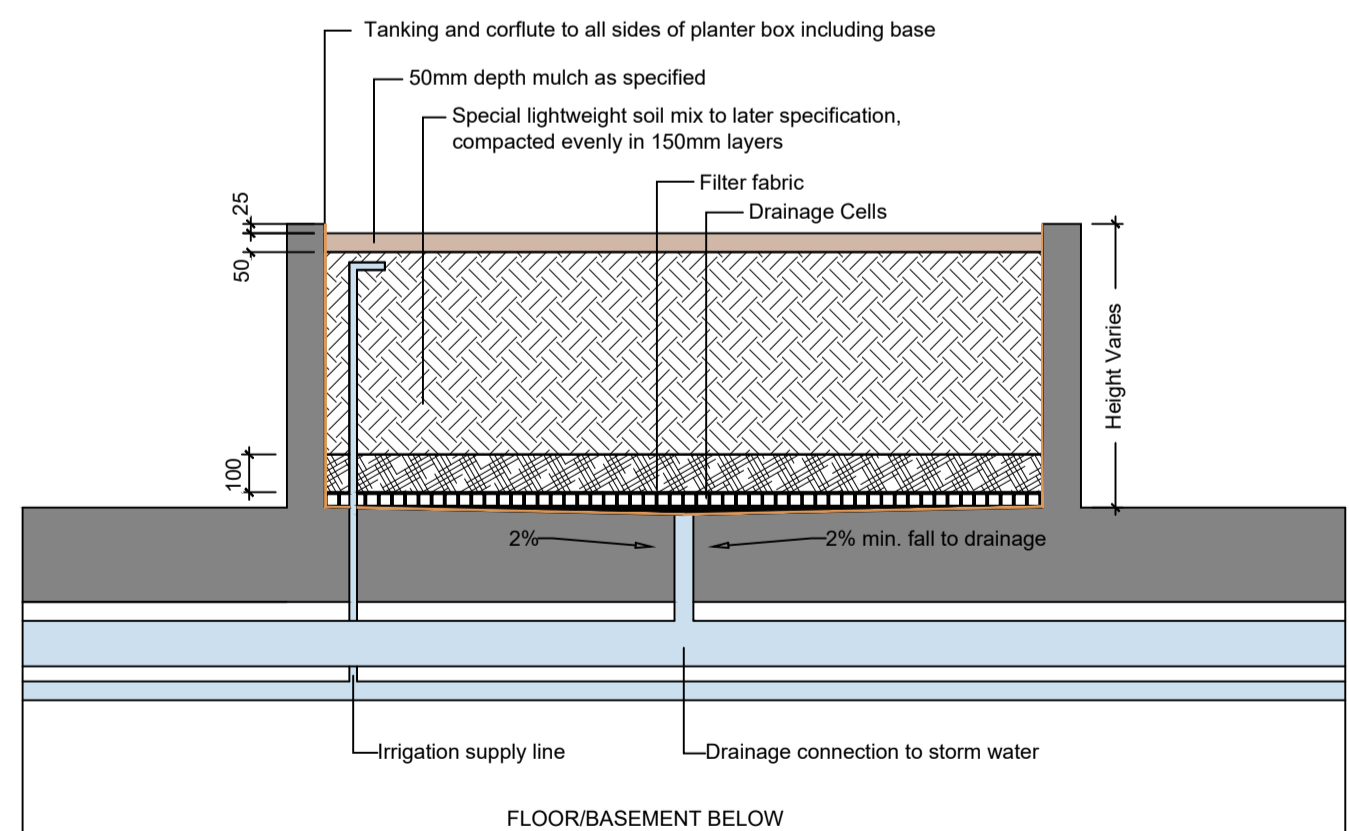


D2 TYPICAL SHRUB PLANTING DETAIL
Scale N.T.S.



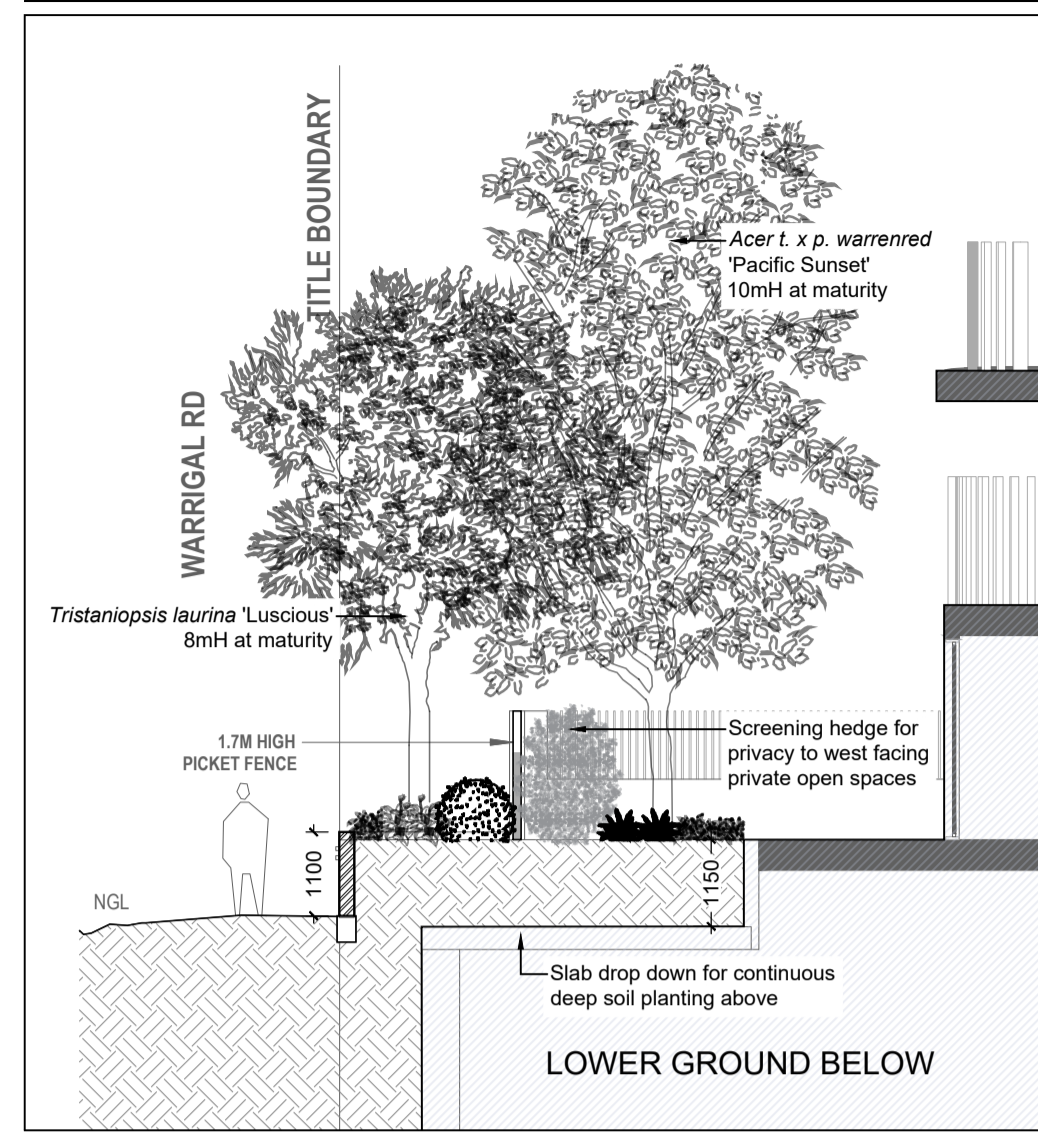
D3 TYPICAL RAISED PLANTER DETAIL (on Natural Ground)
Scale 1:20

D4 TYPICAL LIGHTWEIGHT PLANTER BOX DETAIL
Scale 1:20

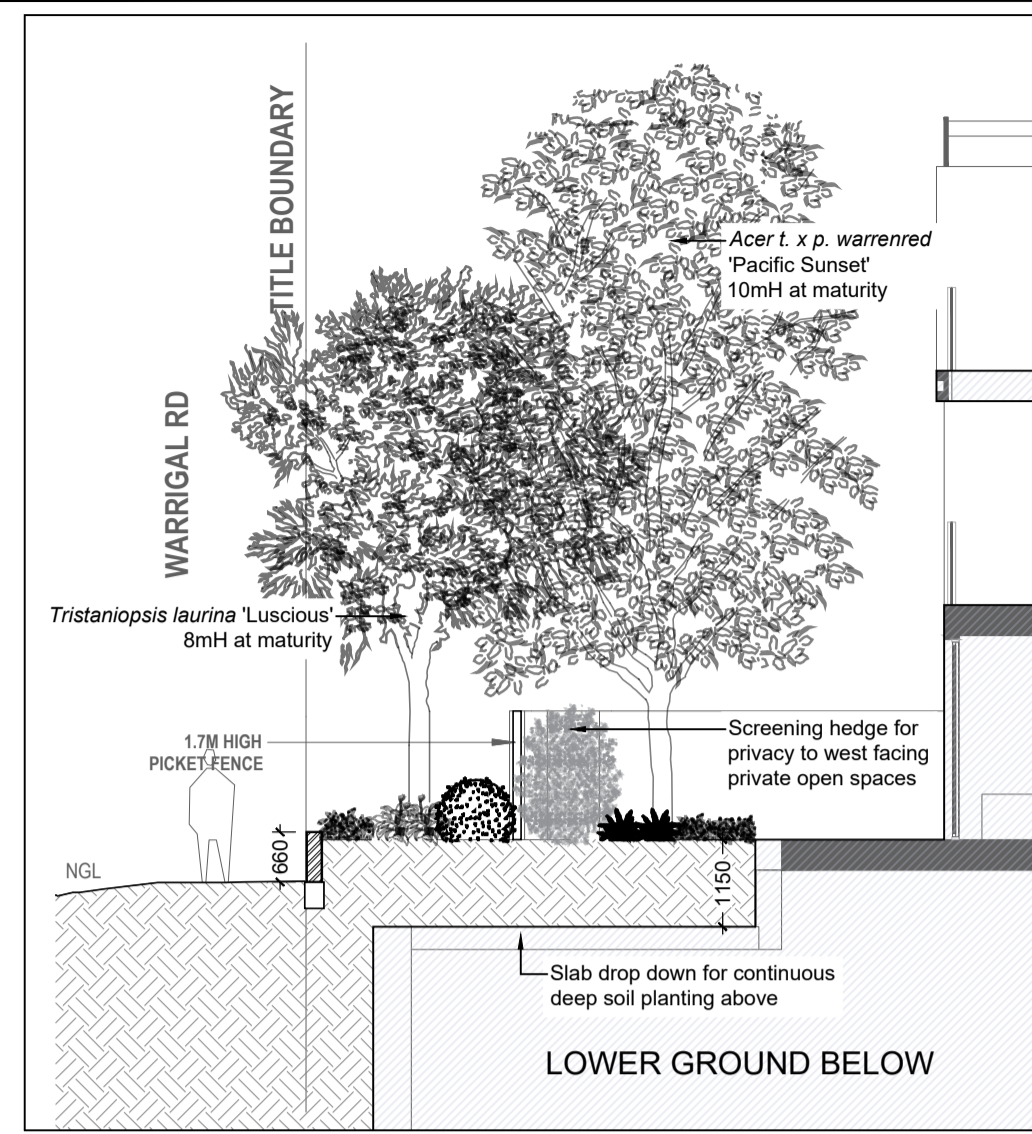


D4 TYPICAL LIGHTWEIGHT PLANTER BOX DETAIL
Scale 1:20

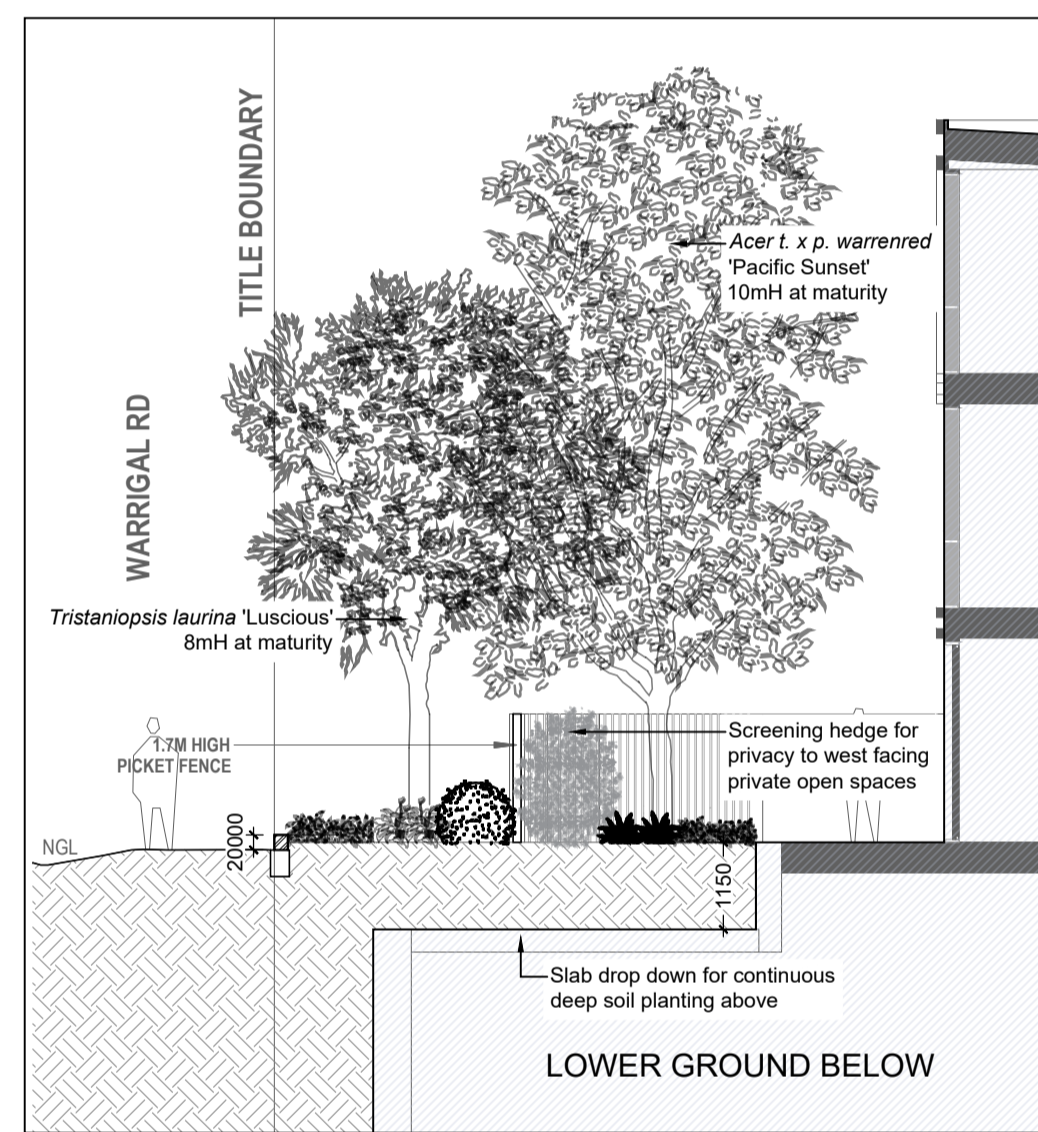
LANDSCAPE SECTIONS



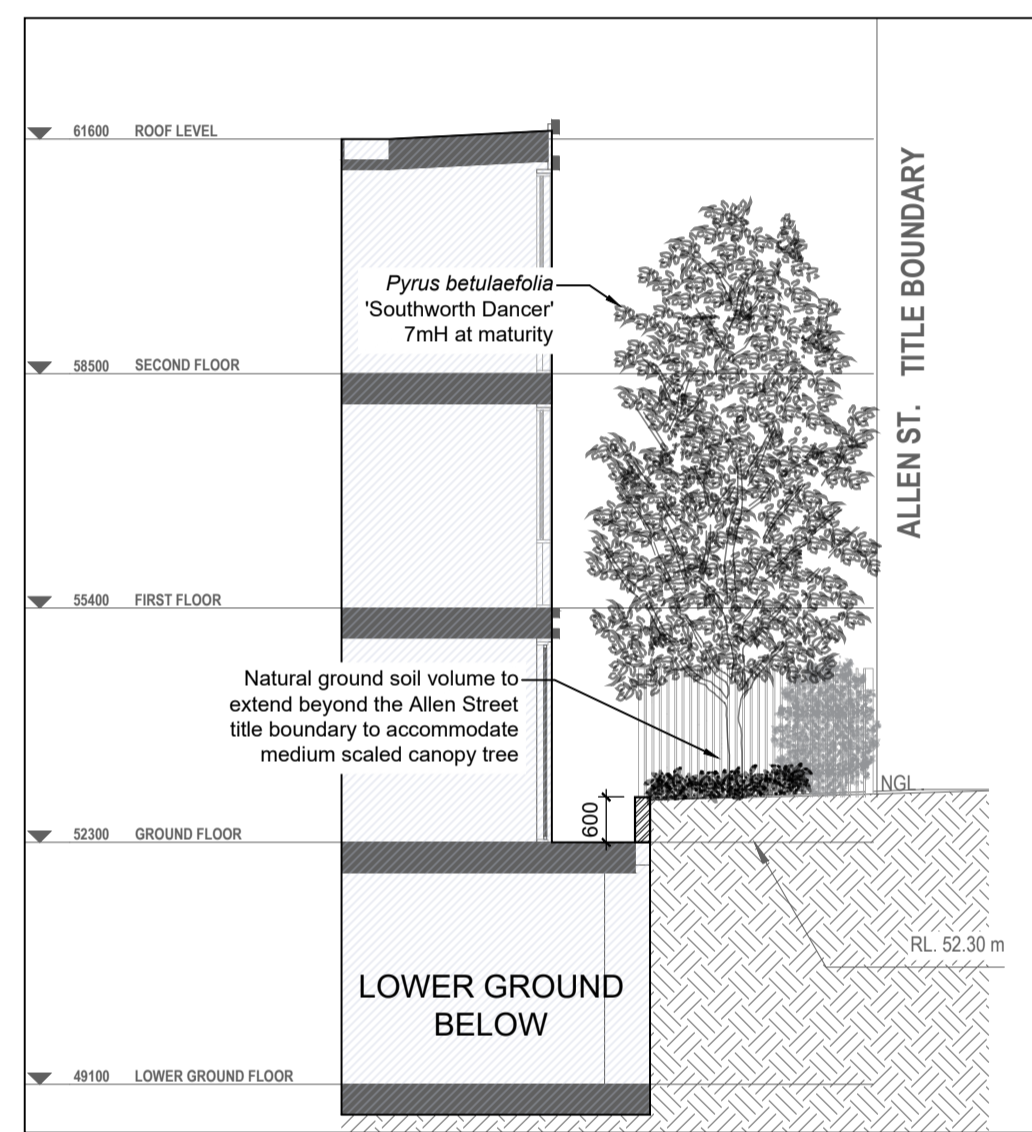
SECTION 1A
1:100 @A1 1:200 @A3



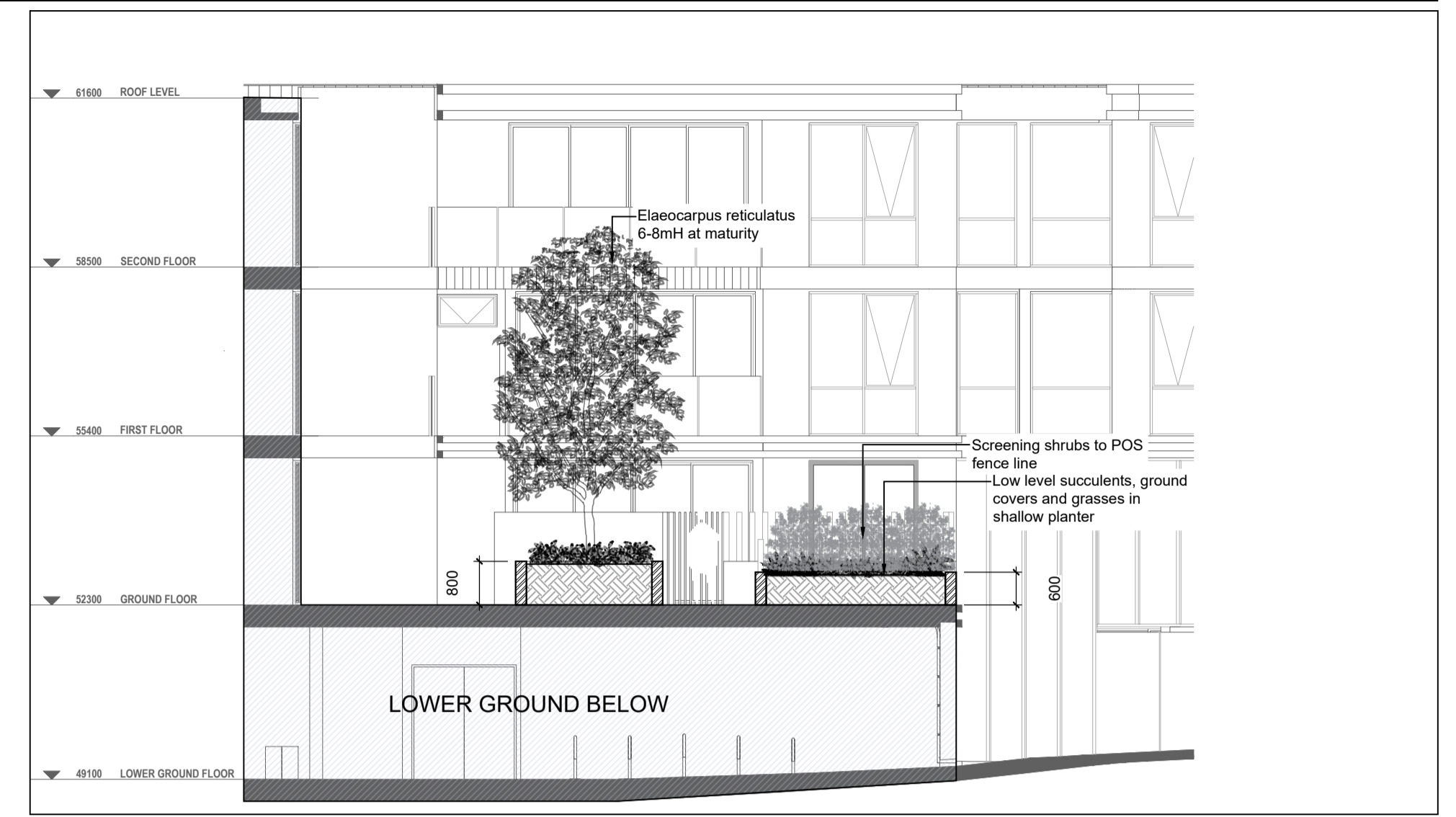
SECTION 1B
1:100 @A1 1:200 @A3



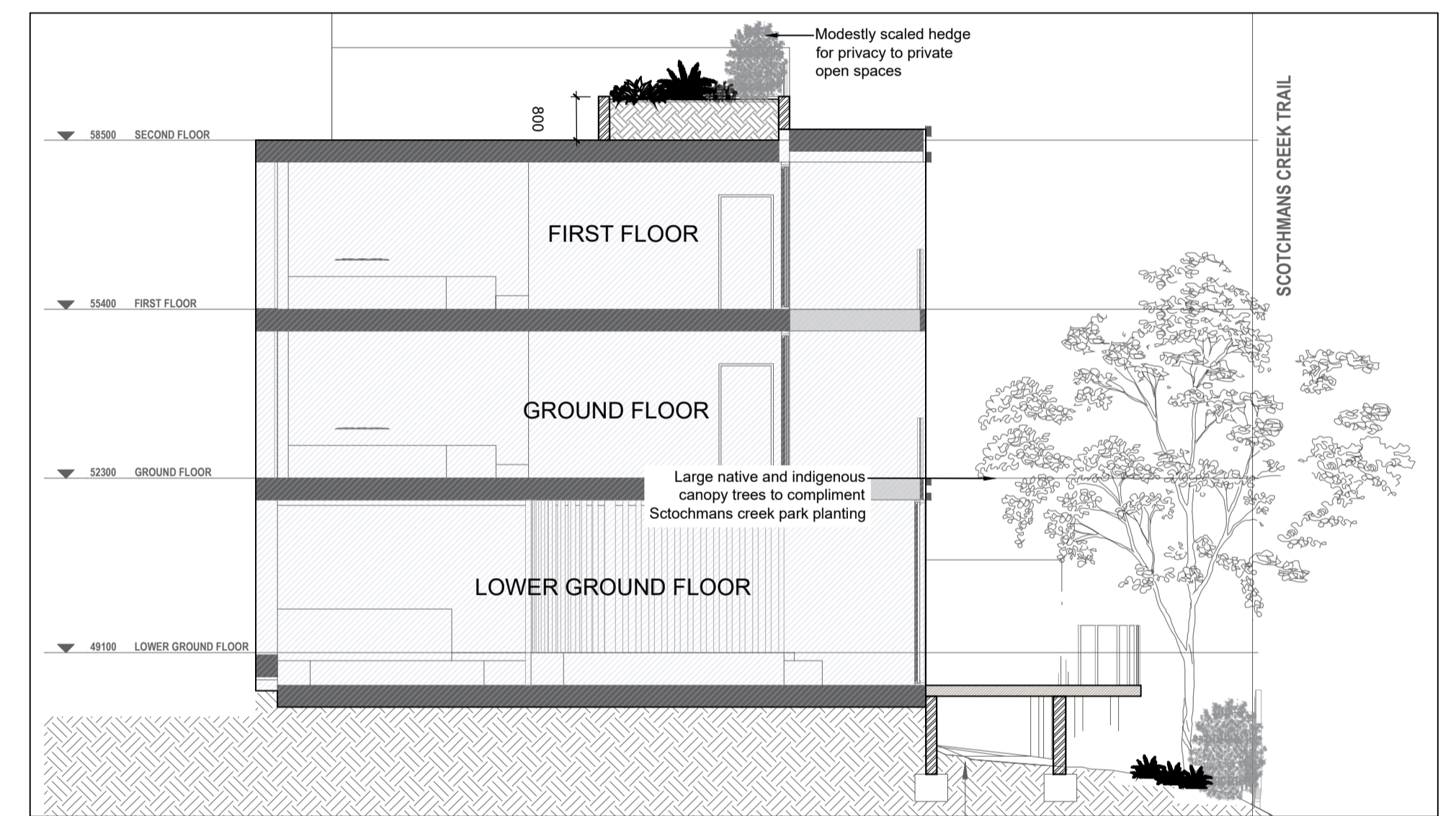
SECTION 1C
1:100 @A1 1:200 @A3



SECTION 2
1:100 @A1 1:200 @A3



SECTION 3
1:100 @A1 1:200 @A3



SECTION 4
1:100 @A1 1:200 @A3

SPECIFICATION NOTES

Soil Preparation
Crushed rock, concrete spillage and any other material restrictive to plant growth (e.g. large rocks) shall be removed from the site of any planting beds and semi-advanced trees. All trees to be removed shall be stump ground and all rubbish/vegetative spoil is to be removed from site. Existing top soil in planting areas is to be preserved so that it does not receive additional compaction from site machinery and so that no rubble or building supplies are stored in these areas.

No imported top soil is to be used within the root zones of trees to be protected. Any preparation of existing soil for planting within these areas is to be done by hand only. Holes (e.g. as the result of plant removal) and uneven soil levels may be patched using topsoil as specified below.

Any imported topsoil is to be free of weeds, rubble and other materials damaging to plant growth and is to be of a medium texture (sandy loam) with a pH of 6.0-7.0. Top soil is to be laid over a prepared sub-base which has had any materials damaging to plant growth (e.g. rubble and large rocks) removed, spread to the appropriate depth and cultivated into the existing site soil to a minimum depth of 150mm.

Imported top soil is to be lightly and uniformly compacted in 150mm layers to a minimum depth of 100mm on lawn areas and 300mm on excavated planting beds.

Weed Removal
All weeds shall be thoroughly removed. All vegetative material, including roots and rhizomes of non-woody perennials and woody suckering weeds, is to be removed or appropriately controlled using chemical means. The stumps of non-suckering woody perennials are to be stump ground. All vegetative material shall be appropriately disposed of off site in a manner which will not allow their re-establishment elsewhere. Any chemical controls are to be used in accordance with manufacturer's instructions and standard occupational health and safety procedures.

Care must be taken to ensure that all trees to be retained are not damaged during weed removal. This also implies that any herbicides used are suitable for use around the vegetation to be retained.

Planting
Planting shall be carried out using accepted horticultural practices with all plants conforming to the species, size and quantities indicated on the Landscape Plan and Plant Schedule. Plants shall be thoroughly soaked through immersion in water prior to planting and if the planting soil is very dry then the planting hole is also to be filled with water and allowed to drain completely.

All plants shall be appropriately hardened off in the nursery. Use plants with the following characteristics. Large healthy root systems with no evidence of root curl or pot bound restriction or damage, vigorous, well established, free from disease and pests and of good form, consistent with the species or variety.

Planting holes for shrubs and groundcovers are to be of minimum size 75mm larger than the planting pot in all directions. Semi-advanced tree planting holes are to be the same depth as the rootball and 2-3 times its diameter, with the top of the rootball being at grade. A 75mm high berm is to be constructed at edge of root-ball to hold water. All plants are to be thoroughly watered after planting and slow release fertiliser added at the quantities specified by the manufacturer.

Mulch
Mulch is to be supplied to all garden beds and is to be an organic type laid to a minimum depth of 75mm, consisting of fine dark coloured chipped or shredded pine bark or hardwood with not more than 5% fines content by volume (preferably zero fines). The average size of the woodchip must be approximately 10mm x 20mm x 5mm and the maximum length is not to exceed 30mm.

Mulch shall be free of damaging matter such as soil, weeds and sticks and is to be stockpiled and thoroughly weathered prior to delivery. Mulch is to be kept back 100mm from the stems of all plants to prevent collar rot.

Granitic Gravel Surface
Granitic gravel is to be installed where shown comprising of a 50mm layer of gravel (Tuscan Toppings or similar) over a base course of 75mm deep gently compacted Fine Crushed Rock. Each layer, including the subgrade is to be appropriately compacted.

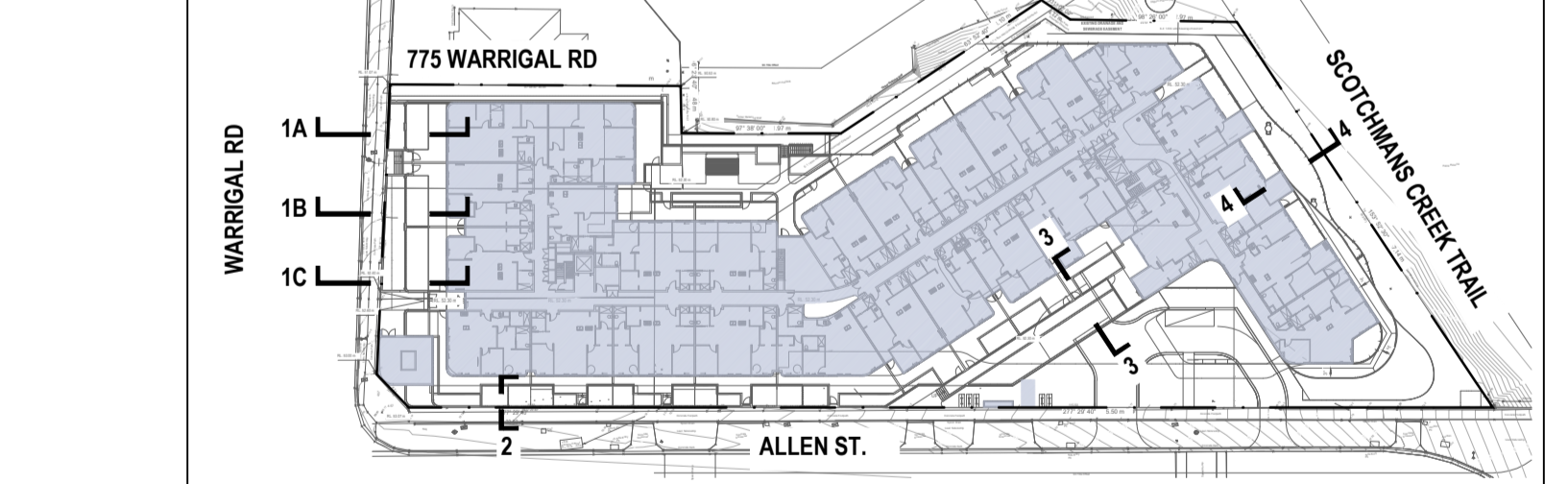
Timber Edges
Provide 75 x 25mm treated pine edges to all borders between gravel mulch paths and garden beds using 75x25x300mm long treated pine stakes at 1200mm maximum centres. An additional stake is to be provided at joins in the plinth.

Irrigation
An approved drip irrigation system is to be supplied to all planter boxes & garden beds. It is the responsibility of the contractor to ensure that all irrigation meets manufacturers specifications. The system is to be connected to mains supply and include a rain-shut off device. All dripline is to be buried with approx. 50mm of topsoil cover and shall be anchored at regular intervals to ensure the tubing cannot be dislodged.

Raised Planter Boxes
Raised planter construction is to include, but not necessarily be limited to, the supply and installation of agricultural drains, drainage cells at base, filter fabric, planting medium, mulch and irrigation. Planter boxes must be effectively tanked and lined with corflute to prevent leaching.

Drainage cells are to be provided at the base of the planter and are to be covered with a layer of filter fabric. A drainage outlet is to be installed in the base of the planter with the floor of the planter sloped towards it. Provide a root anchor if trees are to be planted in a windy location.

SECTION KEY PLAN



ADVERTISED COPY - CITY OF MONASH
This copied document is made available for the sole purpose of enabling its consideration and review as part of a planning process under the Planning and Environment Act. The document must not be used for any purpose which may breach copyright.

