



TYPE A1
 LG02.G02
 1 BED 1 BATH
 56 m²

MAIN BEDROOM SIZE	3400 X 3000mm
SECOND BEDROOM SIZE	
THIRD BEDROOM SIZE	
FOURTH BEDROOM SIZE	
LIVING ROOM SIZE	4385 x 3305mm
HABITABLE ROOM DEPTH	9270mm
SNORKEL	
INTERNAL STORAGE	10.5 m ²
BREEZE PATH	
TERRACE SIZE	8 m ²
DDA COMPLIANCE	

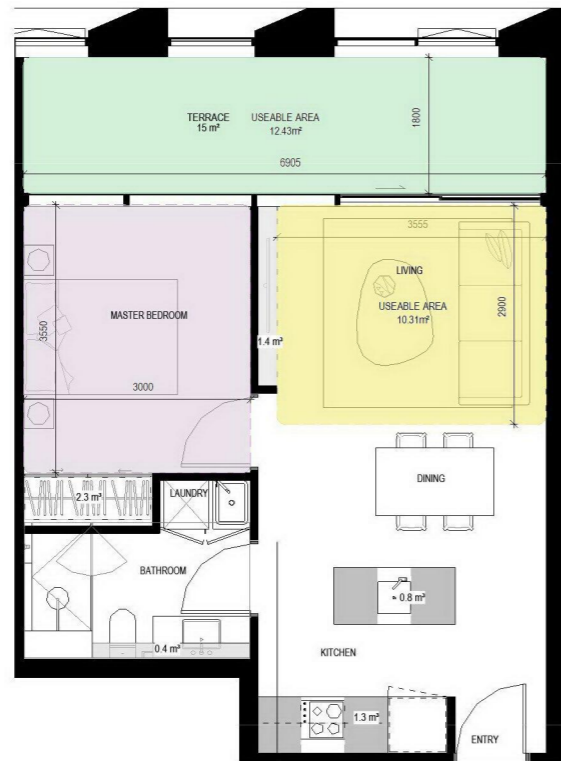


TYPE A2
 LG05
 1 BED 1 BATH
 50 m²

MAIN BEDROOM SIZE	3000 x 3400mm
SECOND BEDROOM SIZE	
THIRD BEDROOM SIZE	
FOURTH BEDROOM SIZE	
LIVING ROOM SIZE	3680 x 3000mm
HABITABLE ROOM DEPTH	7065mm
SNORKEL	
INTERNAL STORAGE	6.4 m ²
BREEZE PATH	
TERRACE SIZE	21 m ²
DDA COMPLIANCE	A

REV	DATE	REVISION	BY	CHK
A	22.09.2021	TOWN PLANNING	DC	DC

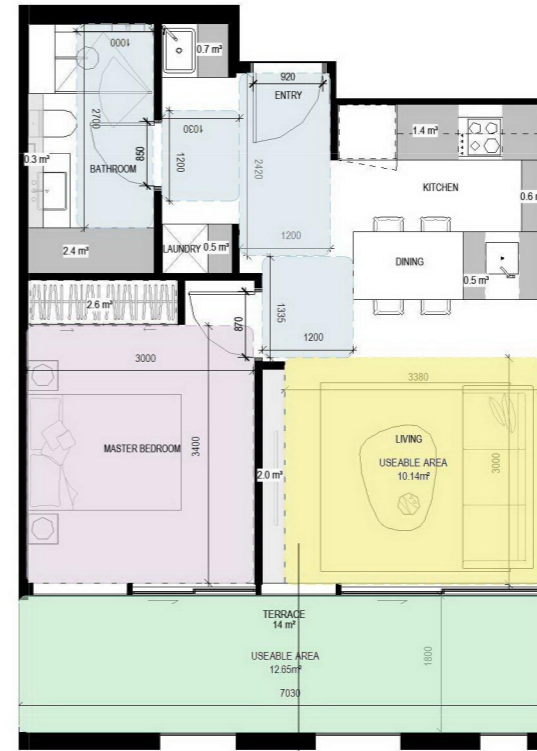
REV	DATE	REVISION	BY	CHK



TYPE A3

G01
1 BED 1 BATH
50 m²

MAIN BEDROOM SIZE	3550 X 3000mm
SECOND BEDROOM SIZE	
THIRD BEDROOM SIZE	
FOURTH BEDROOM SIZE	
LIVING ROOM SIZE	3555 X 2900mm
HABITABLE ROOM DEPTH	7400mm
SNORKEL	
INTERNAL STORAGE	6.2 m²
BREEZE PATH	
TERRACE SIZE	15 m²
DDA COMPLIANCE	



TYPE A4

G04, 105
1 BED 1 BATH
50 m²

MAIN BEDROOM SIZE	3380 X 3000mm
SECOND BEDROOM SIZE	
THIRD BEDROOM SIZE	
FOURTH BEDROOM SIZE	
LIVING ROOM SIZE	3380 x 3000mm
HABITABLE ROOM DEPTH	6515mm
SNORKEL	
INTERNAL STORAGE	11.0 m²
BREEZE PATH	
TERRACE SIZE	14 m²
DDA COMPLIANCE	B

NOTES

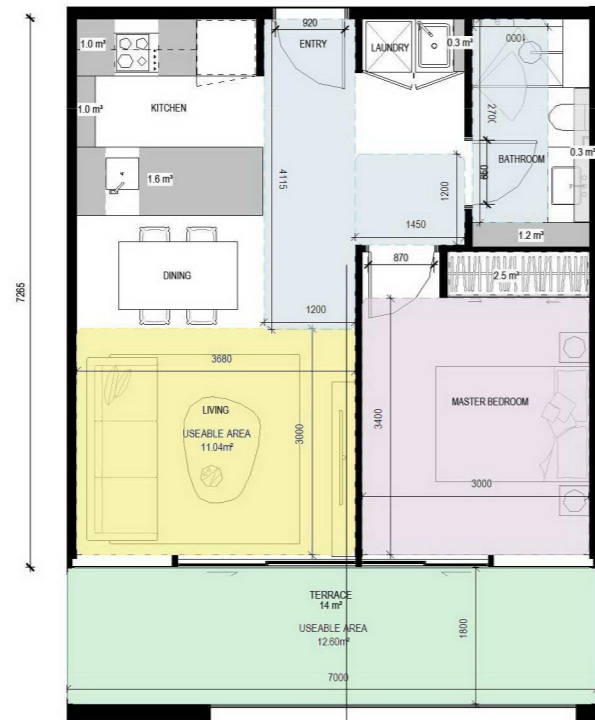
Do not scale. Contractor must verify all dimensions on site before commencing any work or preparing shop drawings which must be approved by the architect before manufacture. Any extra entailed work shown on this drawing must be claimed and approved before proceeding.

COPYRIGHT

Reproduction of the whole or part of the document constitutes an infringement of copyright. The information, ideas and concepts contained in this document is/are confidential. The recipient(s) of this document is/are prohibited from disclosing such information, ideas and concepts to any person without prior written consent of the copyright holder.

REV DATE	REVISION	BY	CHK
A	22.09.2021 TOWN PLANNING	DC	DC

REV DATE	REVISION	BY	CHK



TYPE A5
G05.106
1 BED 1 BATH
52 m²

MAIN BEDROOM SIZE	3400 X 3000mm
SECOND BEDROOM SIZE	
THIRD BEDROOM SIZE	
FOURTH BEDROOM SIZE	
LIVING ROOM SIZE	3600 X 3600mm
HABITABLE ROOM DEPTH	7265mm
SNORKEL	
INTERNAL STORAGE	6.9 m ²
BREEZE PATH	
TERRACE SIZE	14 m ²
DDA COMPLIANCE	B



TYPE A6
101
1 BED 1 BATH
54 m²

MAIN BEDROOM SIZE	3400 X 3000mm
SECOND BEDROOM SIZE	
THIRD BEDROOM SIZE	
FOURTH BEDROOM SIZE	
LIVING ROOM SIZE	3600 X 3600mm
HABITABLE ROOM DEPTH	8050mm
SNORKEL	
INTERNAL STORAGE	6.8 m ²
BREEZE PATH	
TERRACE SIZE	21 m ²
DDA COMPLIANCE	B

NOTES

Do not scale. Contractor must verify all dimensions on site before commencing any work or preparing shop drawings which must be approved by the architect before manufacture. Any extra entailed work shown on this drawing must be claimed and approved before proceeding.

COPYRIGHT

Reproduction of the whole or part of the document constitutes an infringement of copyright. The information, ideas and concepts contained in this document is / are confidential. The recipient(s) of this document is / are prohibited from disclosing such information, ideas and concepts to any person without prior written consent of the copyright holder.

REV DATE	REVISION	BY	CHK
A	22.09.2021 TOWN PLANNING	DC	DC

REV DATE	REVISION	BY	CHK

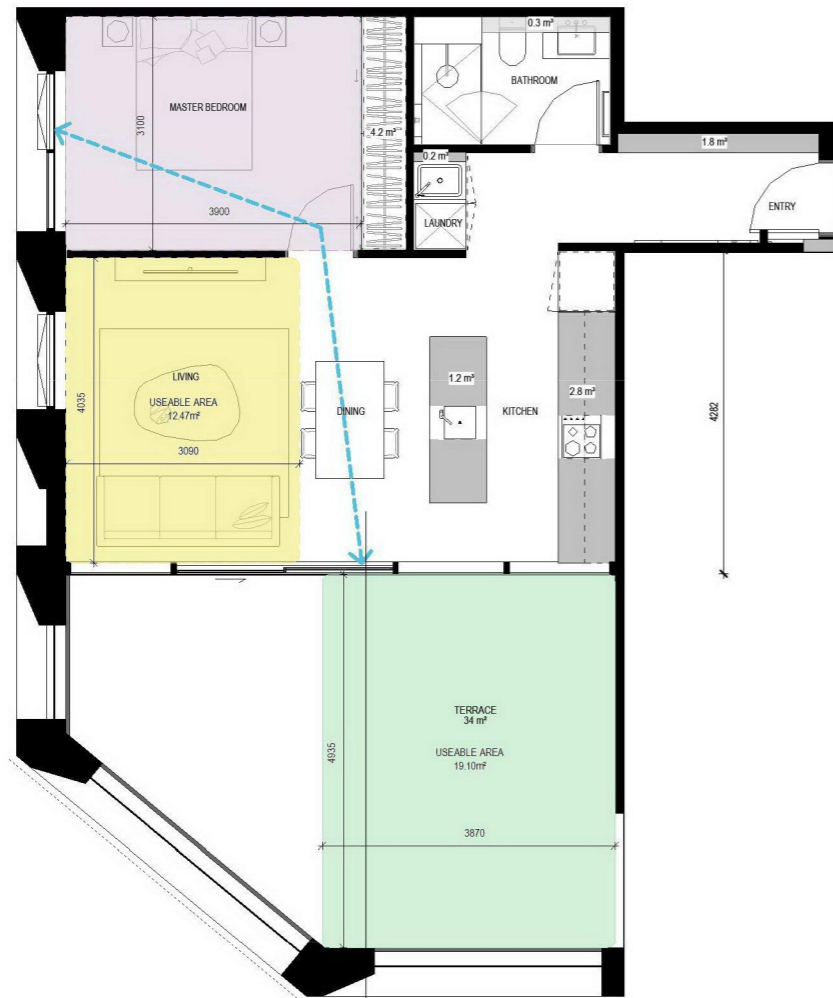
PROJECT
HANSWORTH
149 HANSWORTH STREET, MULGRAVE 3170
MIXED USED DEVELOPMENT

DRAWING STATUS

JOB N° 20090
REVISION N° A
DATE 22.09.2021
SCALE 1:50 @ A1
DRAWN BY Author
CHECKED BY Checker

DRAWING TITLE
ONE BED TYPOLOGIES 03

TP.5002



TYPE A7

104
1 BED 1 BATH
61 m²

MAIN BEDROOM SIZE	3900 X 3100mm
SECOND BEDROOM SIZE	
THIRD BEDROOM SIZE	
FOURTH BEDROOM SIZE	
LIVING ROOM SIZE	4035 X 3090mm
HABITABLE ROOM DEPTH	4282mm
SNORKEL	
INTERNAL STORAGE	10.2 m²
BREEZE PATH	8.1 m
TERRACE SIZE	34 m²
DDA COMPLIANCE	



TYPE A8

107
1 BED 1 BATH
56 m²

MAIN BEDROOM SIZE	3220 X 3000mm
SECOND BEDROOM SIZE	
THIRD BEDROOM SIZE	
FOURTH BEDROOM SIZE	
LIVING ROOM SIZE	4130 X 3000mm
HABITABLE ROOM DEPTH	6970mm
SNORKEL	
INTERNAL STORAGE	7.1 m²
BREEZE PATH	
TERRACE SIZE	13 m²
DDA COMPLIANCE	



TYPE A9
T1.304 - 604, T2.206 - 804
1 BED 1 BATH
50 m²

MAIN BEDROOM SIZE	3720 X 3000mm
SECOND BEDROOM SIZE	
THIRD BEDROOM SIZE	
FOURTH BEDROOM SIZE	
LIVING ROOM SIZE	3590 X 3300mm
HABITABLE ROOM DEPTH	7320mm
SNORKEL	
INTERNAL STORAGE	7.2 m ²
BREEZE PATH	
TERRACE SIZE	9 m ²
DDA COMPLIANCE	B



TYPE A10
T1.608
1 BED 1 BATH
55 m²

MAIN BEDROOM SIZE	3390 X 3000mm
SECOND BEDROOM SIZE	
THIRD BEDROOM SIZE	
FOURTH BEDROOM SIZE	
LIVING ROOM SIZE	3300 x 3150mm
HABITABLE ROOM DEPTH	6200mm
SNORKEL	
INTERNAL STORAGE	8.5 m ²
BREEZE PATH	
TERRACE SIZE	27 m ²
DDA COMPLIANCE	B

REV DATE	REVISION	BY	CHK
A	22.09.2021 TOWN PLANNING	DC	DC

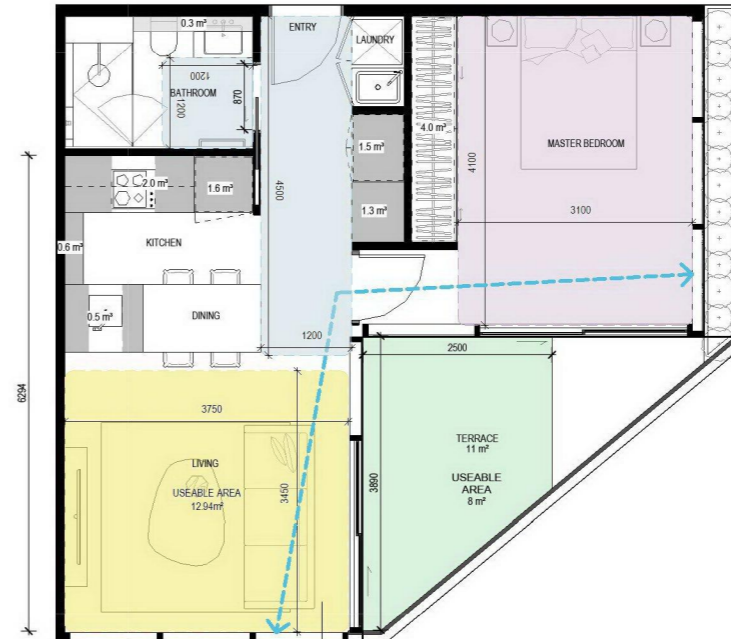
REV DATE	REVISION	BY	CHK



TYPE A11

T1.607
1 BED 1 BATH
51 m²

MAIN BEDROOM SIZE	3400 X 3000mm
SECOND BEDROOM SIZE	
THIRD BEDROOM SIZE	
FOURTH BEDROOM SIZE	
LIVING ROOM SIZE	3340 X 3300mm
HABITABLE ROOM DEPTH	7450mm
SNORKEL	
INTERNAL STORAGE	8.3 m²
BREEZE PATH	
TERRACE SIZE	32 m²
DDA COMPLIANCE	



TYPE A12

T1.605
1 BED 1 BATH
54 m²

MAIN BEDROOM SIZE	4100 X 3100mm
SECOND BEDROOM SIZE	
THIRD BEDROOM SIZE	
FOURTH BEDROOM SIZE	
LIVING ROOM SIZE	3750 X 3450mm
HABITABLE ROOM DEPTH	6469mm
SNORKEL	
INTERNAL STORAGE	11.8 m²
BREEZE PATH	9100.0 m
TERRACE SIZE	11 m²
DDA COMPLIANCE	A

NOTES

Do not scale. Contractor must verify all dimensions on site before commencing any work or preparing shop drawings which must be approved by the architect before manufacture. Any extra entailed work shown on this drawing must be claimed and approved before proceeding.

COPYRIGHT

Reproduction of the whole or part of the document constitutes an infringement of copyright. The information, ideas and concepts contained in this document is/are confidential. The recipient(s) of this document is/are prohibited from disclosing such information, ideas and concepts to any person without prior written consent of the copyright holder.

REV DATE	REVISION	BY	CHK
A	22.09.2021 TOWN PLANNING	DC	DC

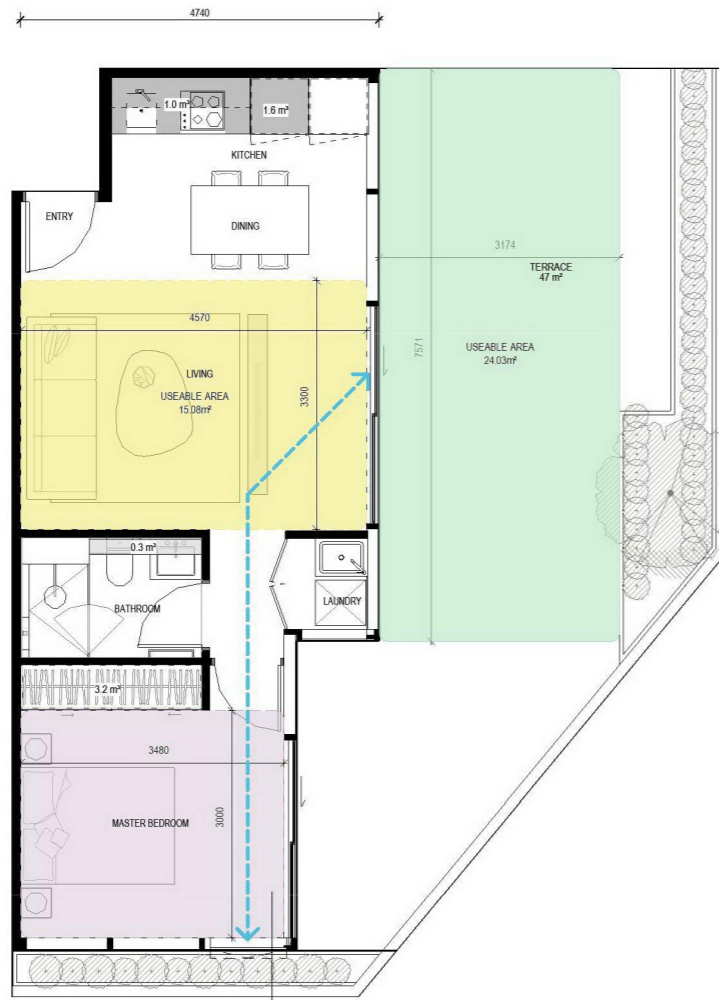
REV DATE	REVISION	BY	CHK

PROJECT
HANSWORTH
149 HANSWORTH STREET, MULGRAVE 3170
MIXED USED DEVELOPMENT

DRAWING STATUS

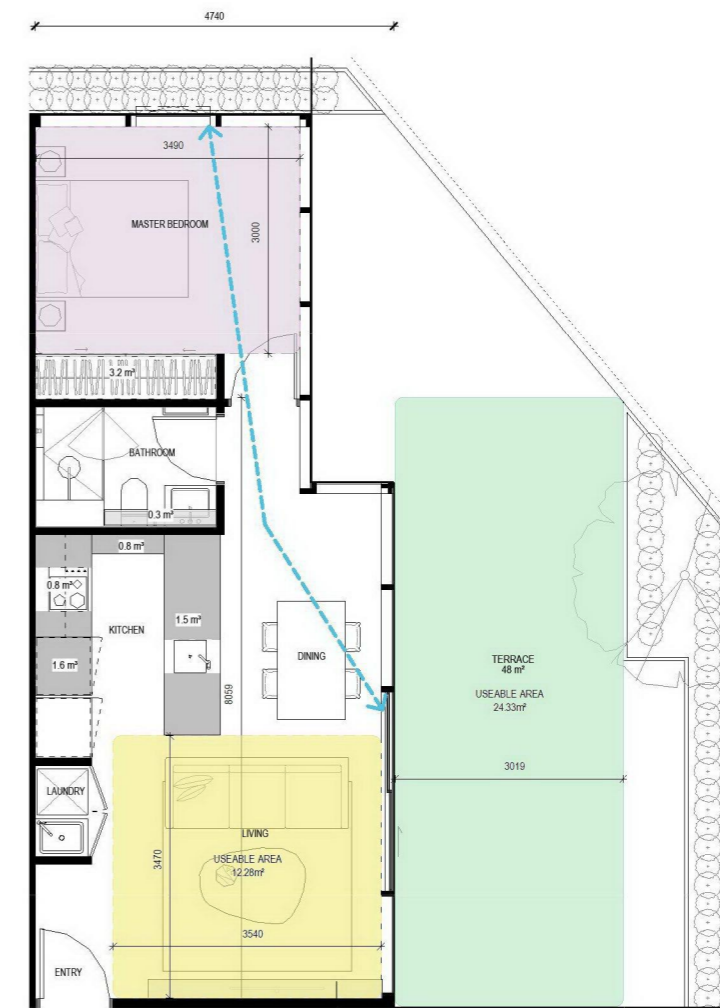
JOB N° 20090
REVISION N° A
DATE 22.09.2021
SCALE 1:50 @ A1
DRAWN BY Author
CHECKED BY Checker

DRAWING TITLE
ONE BED TYPOLOGIES 06 TP.5005



TYPE A13
T2.704
1 BED 1 BATH
50 m²

MAIN BEDROOM SIZE	3500 X 3000mm
SECOND BEDROOM SIZE	
THIRD BEDROOM SIZE	
FOURTH BEDROOM SIZE	
LIVING ROOM SIZE	3600 X 3300mm
HABITABLE ROOM DEPTH	4740mm
SNORKEL	
INTERNAL STORAGE	6.1 m²
BREEZE PATH	8.0 m
TERRACE SIZE	47 m²
DDA COMPLIANCE	



TYPE A14
T2.703
1 BED 1 BATH
52 m²

MAIN BEDROOM SIZE	3490 X 3000mm
SECOND BEDROOM SIZE	
THIRD BEDROOM SIZE	
FOURTH BEDROOM SIZE	
LIVING ROOM SIZE	3570 X 3570mm
HABITABLE ROOM DEPTH	4740mm
SNORKEL	
INTERNAL STORAGE	8.2 m²
BREEZE PATH	8.2 m
TERRACE SIZE	48 m²
DDA COMPLIANCE	

NOTES

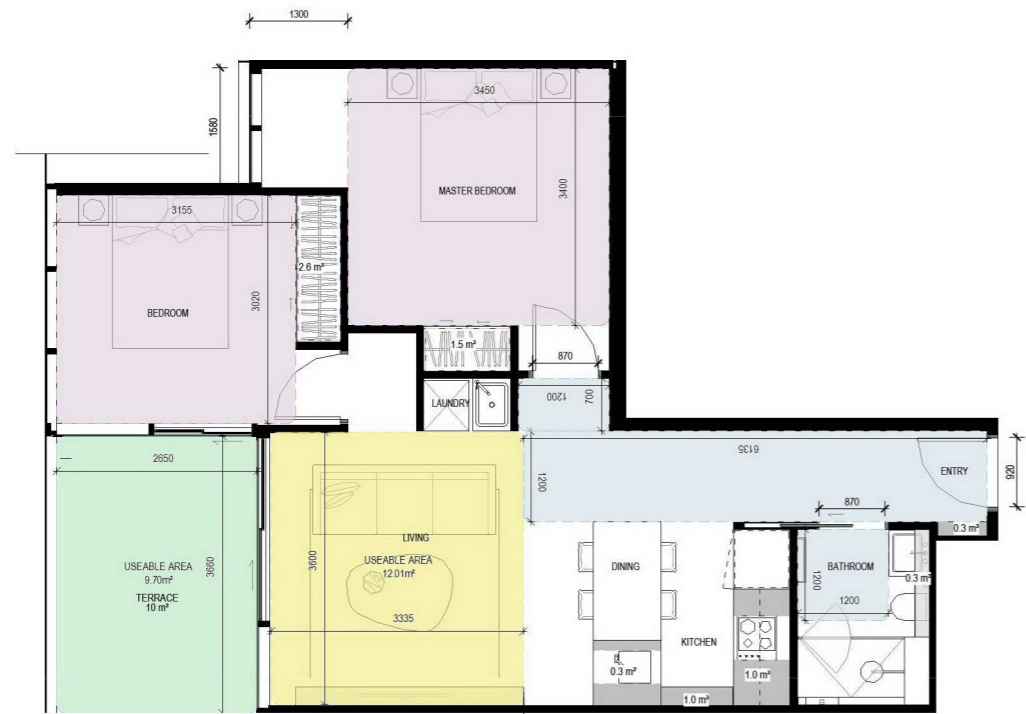
Do not scale. Contractor must verify all dimensions on site before commencing any work or preparing shop drawings which must be approved by the architect before manufacture. Any extra entailed work shown on this drawing must be claimed and approved before proceeding.

COPYRIGHT

Reproduction of the whole or part of the document constitutes an infringement of copyright. The information, ideas and concepts contained in this document is/are confidential. The recipient(s) of this document is/are prohibited from disclosing such information, ideas and concepts to any person without prior written consent of the copyright holder.

REV DATE	REVISION	BY	CHK
A	22.09.2021 TOWN PLANNING	DC	DC

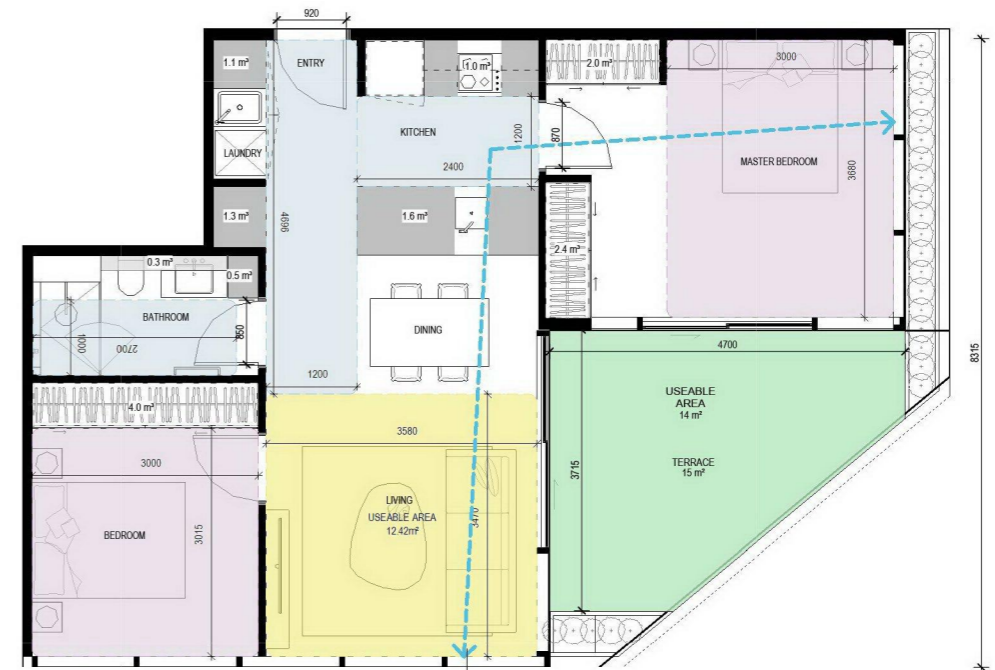
REV DATE	REVISION	BY	CHK



TYPE B1

T1.207 - 507
2 BED 1 BATH
68 m²

MAIN BEDROOM SIZE	3450 x 3400mm
SECOND BEDROOM SIZE	3155 x 3040mm
THIRD BEDROOM SIZE	
FOURTH BEDROOM SIZE	
LIVING ROOM SIZE	3600 X 3335mm
HABITABLE ROOM DEPTH	8895mm
SNORKEL	1580 X 1300mm
INTERNAL STORAGE	7.0 m²
BREEZE PATH	
TERRACE SIZE	10 m²
DDA COMPLIANCE	A



TYPE B2

T1.205 - 505
2 BED 1 BATH
71 m²

MAIN BEDROOM SIZE	3700 X 3000mm
SECOND BEDROOM SIZE	3015 X 3000mm
THIRD BEDROOM SIZE	
FOURTH BEDROOM SIZE	
LIVING ROOM SIZE	3600 X 3335mm
HABITABLE ROOM DEPTH	8315mm
SNORKEL	
INTERNAL STORAGE	14.3 m²
BREEZE PATH	12.0 m
TERRACE SIZE	14 m²
DDA COMPLIANCE	B

NOTES

Do not scale. Contractor must verify all dimensions on site before commencing any work or preparing shop drawings which must be approved by the architect before manufacture. Any extra entailed work shown on this drawing must be claimed and approved before proceeding.

COPYRIGHT

Reproduction of the whole or part of the document constitutes an infringement of copyright. The information, ideas and concepts contained in this document is/are confidential. The recipient(s) of this document is/are prohibited from disclosing such information, ideas and concepts to any person without prior written consent of the copyright holder.

REV	DATE	REVISION	BY	CHK
A	22.09.2021	TOWN PLANNING	DC	DC

REV	DATE	REVISION	BY	CHK

PROJECT

HANSWORTH
149 HANSWORTH STREET, MULGRAVE 3170
MIXED USED DEVELOPMENT

DRAWING STATUS

JOB N° 20090
REVISION N° A
DATE 22.09.2021
SCALE 1:50 @ A1
DRAWN BY Author
CHECKED BY Checker

DRAWING TITLE

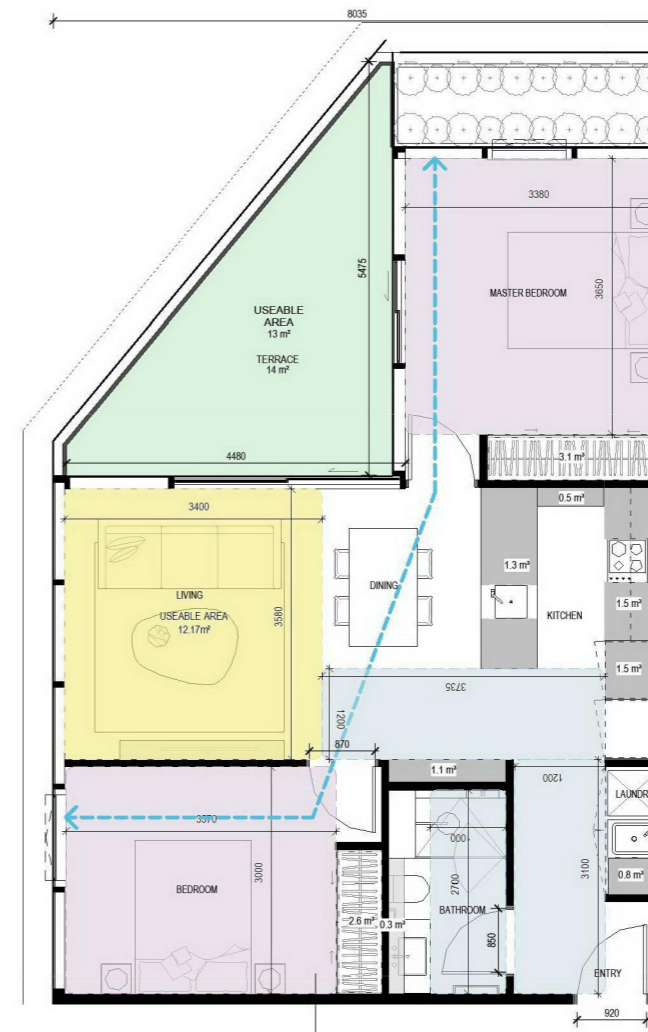
TWO BED TYPOLOGIES 01

TP.5007



TYPE B3
T1.203 - 603
2 BED 1 BATH
67 m²

MAIN BEDROOM SIZE	3400 X 3000mm
SECOND BEDROOM SIZE	3000 X 3000mm
THIRD BEDROOM SIZE	
FOURTH BEDROOM SIZE	
LIVING ROOM SIZE	3600 X 3600mm
HABITABLE ROOM DEPTH	8120mm
SNORKEL	1450 X 1340mm
INTERNAL STORAGE	11.0 m ²
BREEZE PATH	
TERRACE SIZE	9 m ²
DDA COMPLIANCE	



TYPE B4
T2.208 - 608
2 BED 1 BATH
73 m²

MAIN BEDROOM SIZE	3650 X 3380mm
SECOND BEDROOM SIZE	3400 X 3000mm
THIRD BEDROOM SIZE	
FOURTH BEDROOM SIZE	
LIVING ROOM SIZE	3600 X 3335mm
HABITABLE ROOM DEPTH	8035mm
SNORKEL	
INTERNAL STORAGE	12.7 m ²
BREEZE PATH	12.2 m
TERRACE SIZE	14 m ²
DDA COMPLIANCE	B

REV DATE	REVISION	BY	CHK
A	22.09.2021 TOWN PLANNING	DC	DC

REV DATE	REVISION	BY	CHK



TYPE B5
T2.205 - 705
2 BED 1 BATH
67 m²

MAIN BEDROOM SIZE	3400 X 3000mm
SECOND BEDROOM SIZE	3000 X 3000mm
THIRD BEDROOM SIZE	
FOURTH BEDROOM SIZE	
LIVING ROOM SIZE	3600 x 3600mm
HABITABLE ROOM DEPTH	8120mm
SNORKEL	1470 x 1340mm
INTERNAL STORAGE	10.1 m ²
BREEZE PATH	
TERRACE SIZE	9 m ²
DDA COMPLIANCE	B



TYPE B6
T2.301 - 801
2 BED 1 BATH
69 m²

MAIN BEDROOM SIZE	3450 X 3370mm
SECOND BEDROOM SIZE	3155 X 3040mm
THIRD BEDROOM SIZE	
FOURTH BEDROOM SIZE	
LIVING ROOM SIZE	3610 X 3340mm
HABITABLE ROOM DEPTH	7605mm
SNORKEL	1550 X 1300mm
INTERNAL STORAGE	7.9 m ²
BREEZE PATH	
TERRACE SIZE	9 m ²
DDA COMPLIANCE	A

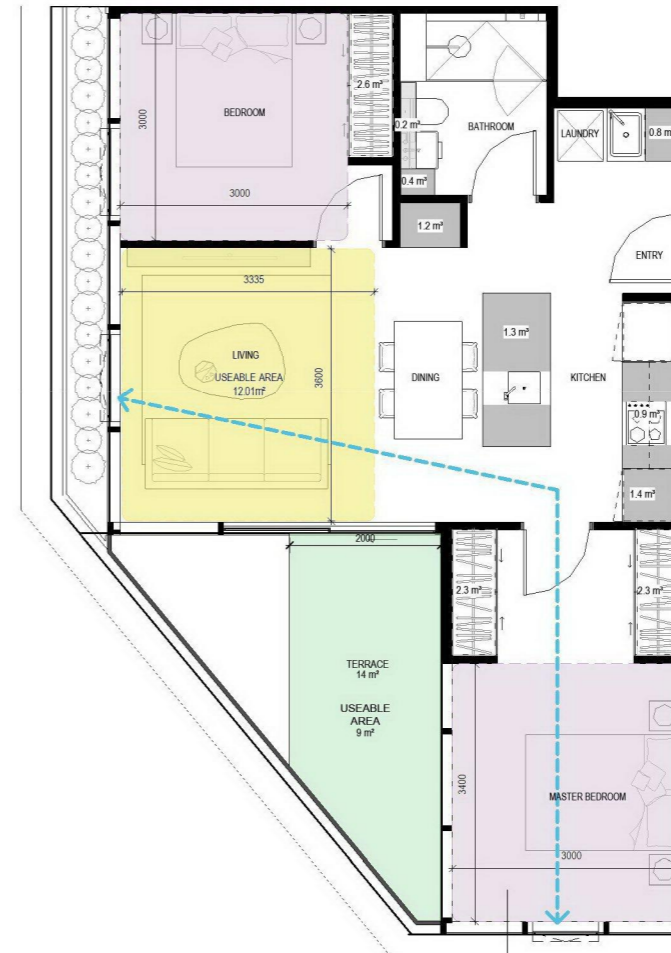
REV DATE	REVISION	BY	CHK
A	22.09.2021 TOWN PLANNING	DC	DC

REV DATE	REVISION	BY	CHK



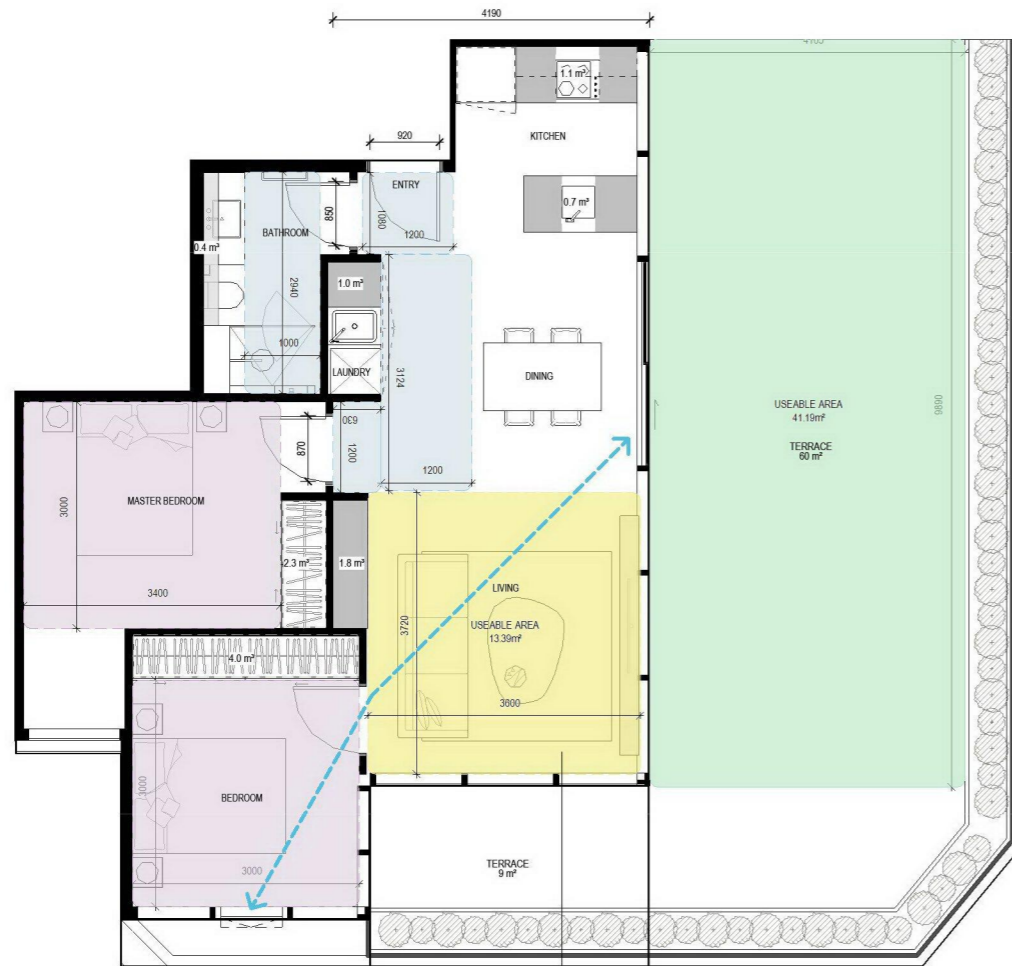
TYPE B7
T2.708, 806
2 BED 1 BATH
68 m²

MAIN BEDROOM SIZE	3650 X 3490mm
SECOND BEDROOM SIZE	3015 X 3000mm
THIRD BEDROOM SIZE	
FOURTH BEDROOM SIZE	
LIVING ROOM SIZE	3600 X 3360mm
HABITABLE ROOM DEPTH	7265mm
SNORKEL	
INTERNAL STORAGE	14.2 m²
BREEZE PATH	8836.0 m
TERRACE SIZE	8 m²
DDA COMPLIANCE	



TYPE B8
T2.707, 805
2 BED 1 BATH
69 m²

MAIN BEDROOM SIZE	3595 x 3000mm
SECOND BEDROOM SIZE	3000 x 3000mm
THIRD BEDROOM SIZE	
FOURTH BEDROOM SIZE	
LIVING ROOM SIZE	3600 x 3400mm
HABITABLE ROOM DEPTH	7535mm
SNORKEL	
INTERNAL STORAGE	13.1 m²
BREEZE PATH	11.6 m
TERRACE SIZE	13 m²
DDA COMPLIANCE	



TYPE B9
 T2 803
 2 BED 1 BATH
 71 m²

MAIN BEDROOM SIZE	3400 X 3000mm
SECOND BEDROOM SIZE	3000 X 3000mm
THIRD BEDROOM SIZE	
FOURTH BEDROOM SIZE	
LIVING ROOM SIZE	4270 x 3800mm
HABITABLE ROOM DEPTH	4190mm
SNORKEL	
INTERNAL STORAGE	11.3 m²
BREEZE PATH	8035.0 m
TERRACE SIZE	60 m²
DDA COMPLIANCE	B

NOTES

Do not scale. Contractor must verify all dimensions on site before commencing any work or preparing shop drawings which must be approved by the architect before manufacture. Any extra entailed work shown on this drawing must be claimed and approved before proceeding.

COPYRIGHT

Reproduction of the whole or part of the document constitutes an infringement of copyright. The information, ideas and concepts contained in this document is/are confidential. The recipient(s) of this document is/are prohibited from disclosing such information, ideas and concepts to any person without prior written consent of the copyright holder.

REV DATE	REVISION	BY	CHK
A	22.09.2021 TOWN PLANNING	DC	DC

REV DATE	REVISION	BY	CHK



TYPE C1
LG03 - 103
2 BED 2 BATH
78 m²

MAIN BEDROOM SIZE	3400 X 3000mm
SECOND BEDROOM SIZE	3043 X 3000mm
THIRD BEDROOM SIZE	
FOURTH BEDROOM SIZE	
LIVING ROOM SIZE	3780 x 3335mm
HABITABLE ROOM DEPTH	7455mm
SNORKEL	
INTERNAL STORAGE	15.0 m ²
BREEZE PATH	0.0 m
TERRACE SIZE	9 m ²
DDA COMPLIANCE	



TYPE C2
LG06
2 BED 2 BATH
80 m²

MAIN BEDROOM SIZE	3420 X 3015mm
SECOND BEDROOM SIZE	3420 X 3015mm
THIRD BEDROOM SIZE	
FOURTH BEDROOM SIZE	
LIVING ROOM SIZE	3680 X 3520mm
HABITABLE ROOM DEPTH	8450mm
SNORKEL	
INTERNAL STORAGE	13.3 m ²
BREEZE PATH	
TERRACE SIZE	51 m ²
DDA COMPLIANCE	B

NOTES

Do not scale. Contractor must verify all dimensions on site before commencing any work or preparing shop drawings which must be approved by the architect before manufacture. Any extra entailed work shown on this drawing must be claimed and approved before proceeding.

COPYRIGHT

Reproduction of the whole or part of the document constitutes an infringement of copyright. The information, ideas and concepts contained in this document is / are confidential. The recipient(s) of this document is / are prohibited from disclosing such information, ideas and concepts to any person without prior written consent of the copyright holder.

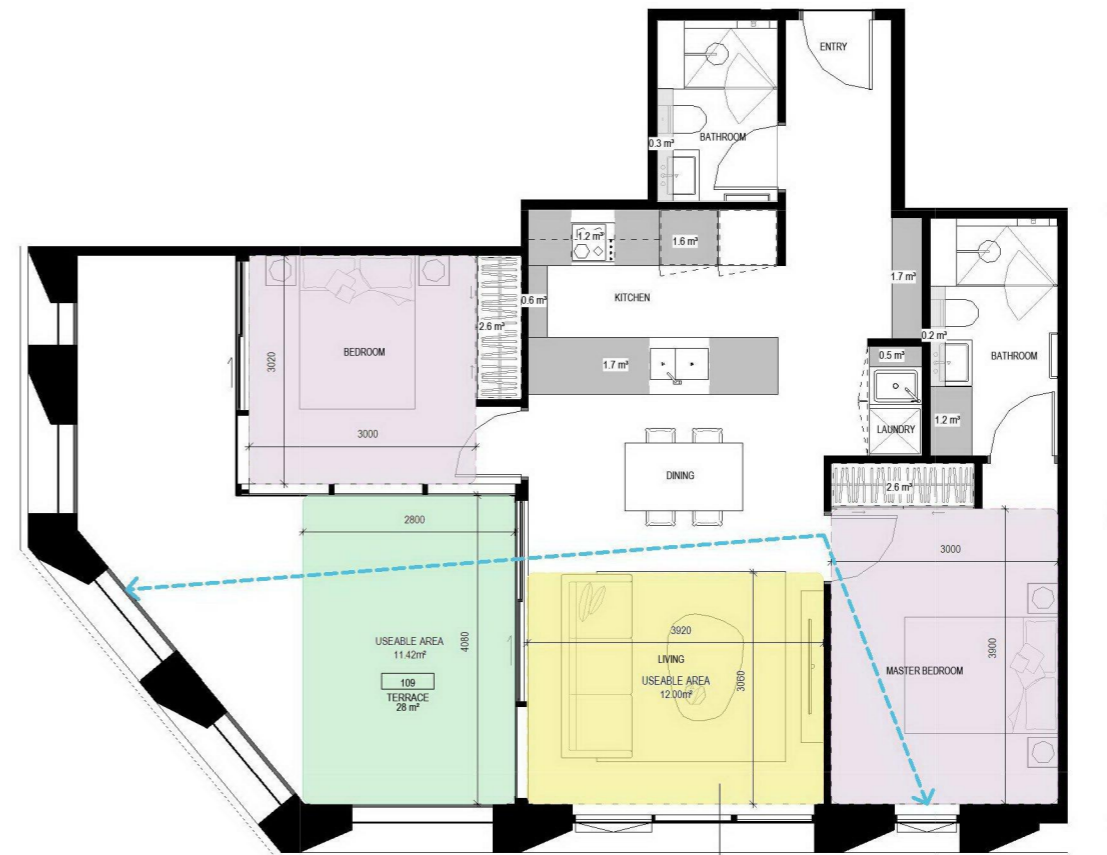
REV DATE	REVISION	BY	CHK
A	22.09.2021 TOWN PLANNING	DC	DC

REV DATE	REVISION	BY	CHK



TYPE C3
G06,108
2 BED 2 BATH
74 m²

MAIN BEDROOM SIZE	3420 X 3015mm
SECOND BEDROOM SIZE	3020 X 3015mm
THIRD BEDROOM SIZE	
FOURTH BEDROOM SIZE	
LIVING ROOM SIZE	3860 X 3300mm
HABITABLE ROOM DEPTH	8540mm
SNORKEL	
INTERNAL STORAGE	14.5 m ²
BREEZE PATH	
TERRACE SIZE	9 m ²
DDA COMPLIANCE	



TYPE C4
LG07,G07,109
2 BED 2 BATH
80 m²

MAIN BEDROOM SIZE	3900 X 3000mm
SECOND BEDROOM SIZE	3020 X 3020mm
THIRD BEDROOM SIZE	
FOURTH BEDROOM SIZE	
LIVING ROOM SIZE	3920 X 3080mm
HABITABLE ROOM DEPTH	8115mm
SNORKEL	
INTERNAL STORAGE	14.2 m ²
BREEZE PATH	7.7 m
TERRACE SIZE	28 m ²
DDA COMPLIANCE	

NOTES

Do not scale. Contractor must verify all dimensions on site before commencing any work or preparing shop drawings which must be approved by the architect before manufacture. Any extra entailed work shown on this drawing must be claimed and approved before proceeding.

COPYRIGHT

Reproduction of the whole or part of the document constitutes an infringement of copyright. The information, ideas and concepts contained in this document is / are confidential. The recipient(s) of this document is / are prohibited from disclosing such information, ideas and concepts to any person without prior written consent of the copyright holder.

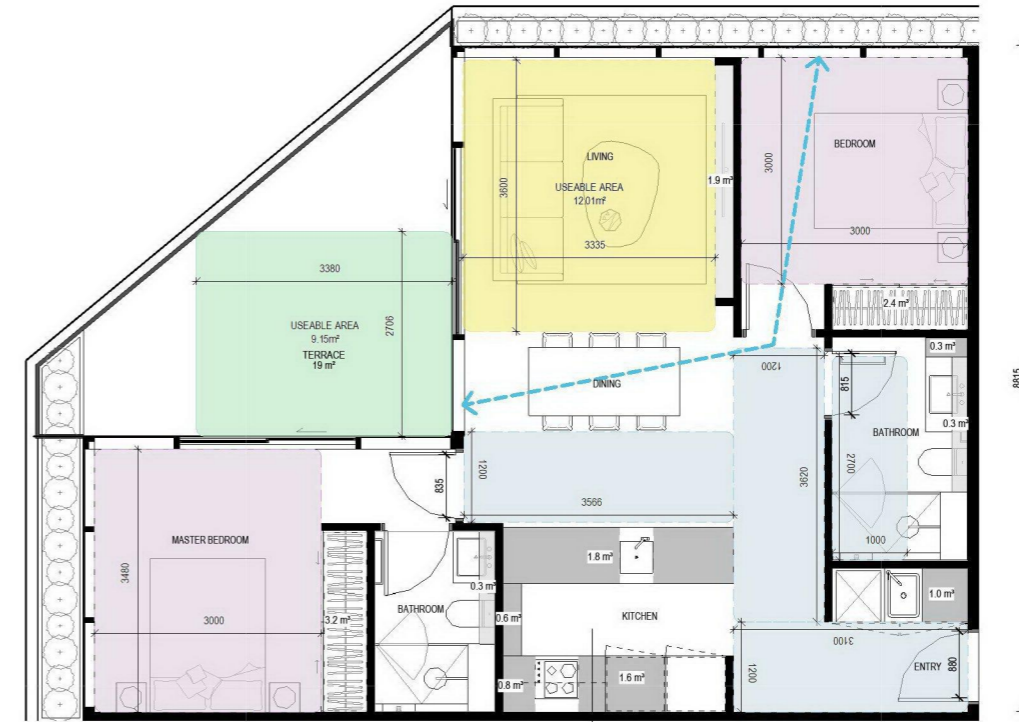
REV DATE	REVISION	BY	CHK
A	22.09.2021 TOWN PLANNING	DC	DC

REV DATE	REVISION	BY	CHK



TYPE C5
110
2 BED 2 BATH
84 m²

MAIN BEDROOM SIZE	3598 X 3000mm
SECOND BEDROOM SIZE	3010 X 3000mm
THIRD BEDROOM SIZE	
FOURTH BEDROOM SIZE	
LIVING ROOM SIZE	3600 X 3500mm
HABITABLE ROOM DEPTH	8640mm
SNORKEL	
INTERNAL STORAGE	11.6 m ²
BREEZE PATH	
TERRACE SIZE	13 m ²
DDA COMPLIANCE	B



TYPE C6
T1.201 - 501, T2.203 - 603
2 BED 2 BATH
81 m²

MAIN BEDROOM SIZE	3480 X 3000mm
SECOND BEDROOM SIZE	3000 X 3000mm
THIRD BEDROOM SIZE	
FOURTH BEDROOM SIZE	
LIVING ROOM SIZE	3600 X 3575mm
HABITABLE ROOM DEPTH	8815mm
SNORKEL	
INTERNAL STORAGE	12.1 m ²
BREEZE PATH	8.0 m
TERRACE SIZE	19 m ²
DDA COMPLIANCE	B

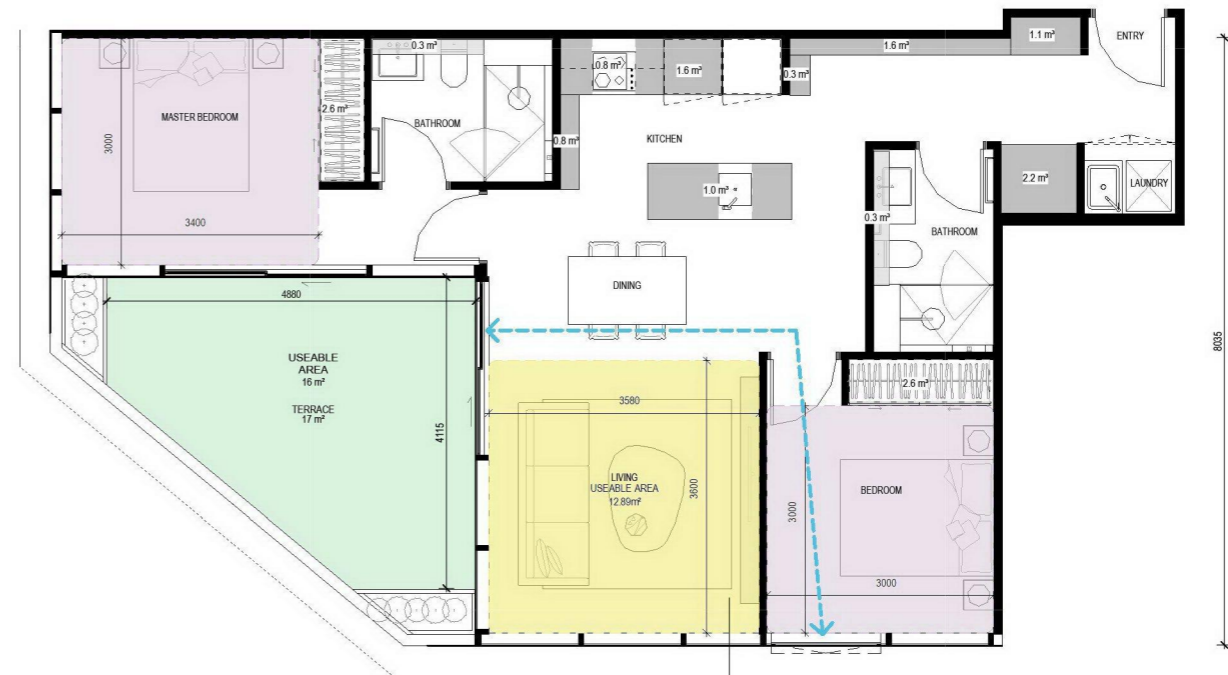
REV DATE	REVISION	BY	CHK
A	22.09.2021 TOWN PLANNING	DC	DC

REV DATE	REVISION	BY	CHK



TYPE C7
T1.208 - 508
2 BED 2 BATH
78 m²

MAIN BEDROOM SIZE	3370 X 3200mm
SECOND BEDROOM SIZE	3000 X 3000mm
THIRD BEDROOM SIZE	
FOURTH BEDROOM SIZE	
LIVING ROOM SIZE	3600 x 3400mm
HABITABLE ROOM DEPTH	7820mm
SNORKEL	1520 X 1400mm
INTERNAL STORAGE	10.0 m ²
BREEZE PATH	
TERRACE SIZE	11 m ²
DDA COMPLIANCE	B

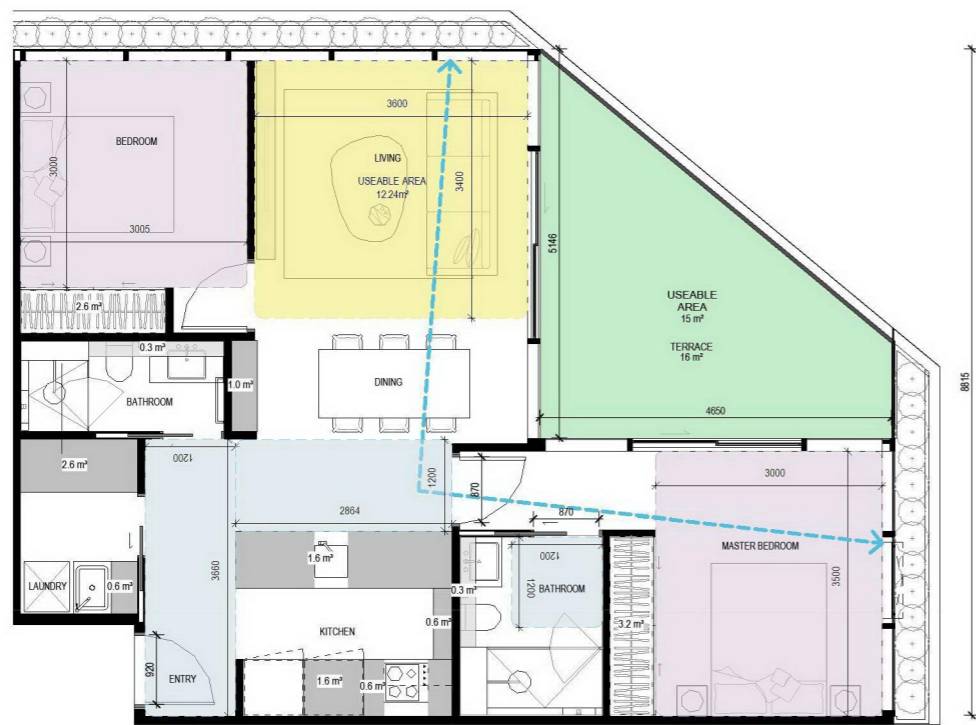


TYPE C8
T1.206 - 506
2 BED 2 BATH
82 m²

MAIN BEDROOM SIZE	3400 x 3000mm
SECOND BEDROOM SIZE	3000 x 3000mm
THIRD BEDROOM SIZE	
FOURTH BEDROOM SIZE	
LIVING ROOM SIZE	3580 X 3400mm
HABITABLE ROOM DEPTH	8035mm
SNORKEL	
INTERNAL STORAGE	14.2 m ²
BREEZE PATH	8.1 m
TERRACE SIZE	17 m ²
DDA COMPLIANCE	

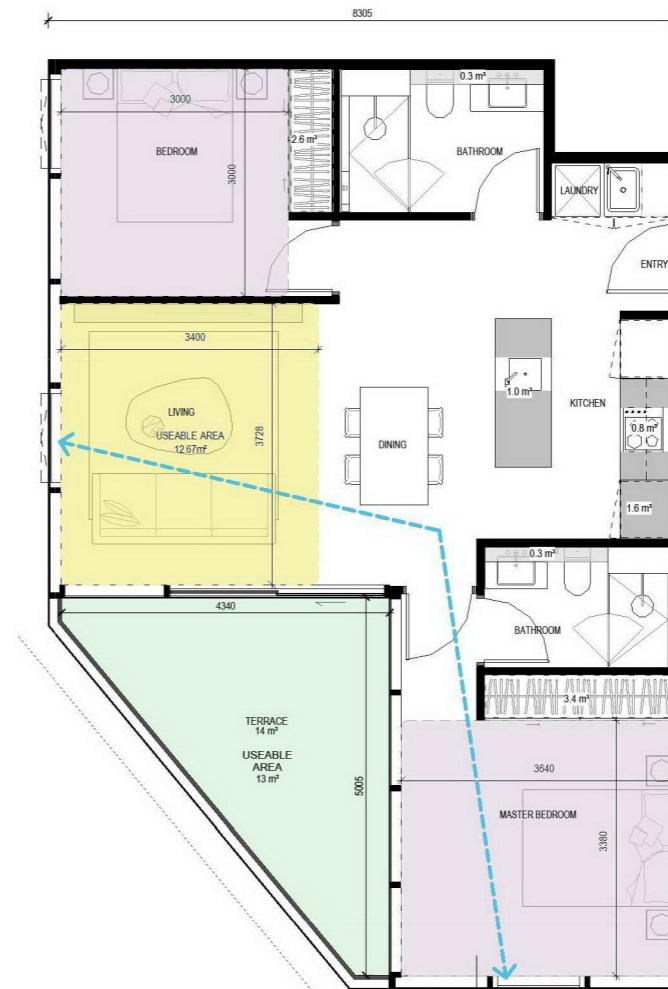
REV	DATE	REVISION	BY	CHK
A	22.09.2021	TOWN PLANNING	DC	DC

REV	DATE	REVISION	BY	CHK



TYPE C9
T1 202 - 602, T2 204 - 604
2 BED 2 BATH
77 m²

MAIN BEDROOM SIZE	3500 X 3000mm
SECOND BEDROOM SIZE	3025 X 3000mm
THIRD BEDROOM SIZE	
FOURTH BEDROOM SIZE	
LIVING ROOM SIZE	3600 X 3400mm
HABITABLE ROOM DEPTH	8815mm
SNORKEL	
INTERNAL STORAGE	15.0 m ²
BREEZE PATH	11.8 m
TERRACE SIZE	16 m ²
DDA COMPLIANCE	A



TYPE C10
T2 207 - 607
2 BED 2 BATH
78 m²

MAIN BEDROOM SIZE	3640 x 3380mm
SECOND BEDROOM SIZE	3000 x 3000mm
THIRD BEDROOM SIZE	
FOURTH BEDROOM SIZE	
LIVING ROOM SIZE	3750 x 3200mm
HABITABLE ROOM DEPTH	8305mm
SNORKEL	
INTERNAL STORAGE	9.2 m ²
BREEZE PATH	10.9 m
TERRACE SIZE	14 m ²
DDA COMPLIANCE	

REV DATE	REVISION	BY	CHK
A	22.09.2021 TOWN PLANNING	DC	DC

REV DATE	REVISION	BY	CHK



TYPE C11
T2 202-602
2 BED 2 BATH
76 m²

MAIN BEDROOM SIZE	3370 X 3200mm
SECOND BEDROOM SIZE	3000 X 3000mm
THIRD BEDROOM SIZE	
FOURTH BEDROOM SIZE	
LIVING ROOM SIZE	3600 X 3350mm
HABITABLE ROOM DEPTH	7720mm
SNORKEL	1550 X 1520mm
INTERNAL STORAGE	9.7 m³
BREEZE PATH	0.0 m
TERRACE SIZE	11 m²
DDA COMPLIANCE	B



TYPE C12
T1 606
2 BED 2 BATH
82 m²

MAIN BEDROOM SIZE	3990 X 3005mm
SECOND BEDROOM SIZE	3170 X 3005mm
THIRD BEDROOM SIZE	
FOURTH BEDROOM SIZE	
LIVING ROOM SIZE	4450 X 3200mm
HABITABLE ROOM DEPTH	7215mm
SNORKEL	
INTERNAL STORAGE	11.2 m³
BREEZE PATH	8404.0 m
TERRACE SIZE	25 m²
DDA COMPLIANCE	B

NOTES

Do not scale. Contractor must verify all dimensions on site before commencing any work or preparing shop drawings which must be approved by the architect before manufacture. Any extra entailed work shown on this drawing must be claimed and approved before proceeding.

COPYRIGHT

Reproduction of the whole or part of the document constitutes an infringement of copyright. The information, ideas and concepts contained in this document is/ are confidential. The recipient(s) of this document is/ are prohibited from disclosing such information, ideas and concepts to any person without prior written consent of the copyright holder.

REV	DATE	REVISION	BY	CHK
A	22.09.2021	TOWN PLANNING	DC	DC

REV	DATE	REVISION	BY	CHK



TYPE D1
102
3 BED 2 BATH
108 m²

MAIN BEDROOM SIZE	3400 X 3200mm
SECOND BEDROOM SIZE	3000 X 3000mm
THIRD BEDROOM SIZE	3000 X 3000mm
FOURTH BEDROOM SIZE	
LIVING ROOM SIZE	3635 X 3600mm
HABITABLE ROOM DEPTH	8855mm
SNORKEL	
INTERNAL STORAGE	22.4 m²
BREEZE PATH	9.6 m
TERRACE SIZE	30 m²
DDA COMPLIANCE	



TYPE D2
111
3 BED 2 BATH
101 m²

MAIN BEDROOM SIZE	3410 X 3000mm
SECOND BEDROOM SIZE	3000 X 3000mm
THIRD BEDROOM SIZE	3000 X 3000mm
FOURTH BEDROOM SIZE	
LIVING ROOM SIZE	3660 X 3455mm
HABITABLE ROOM DEPTH	8760mm
SNORKEL	
INTERNAL STORAGE	20.7 m²
BREEZE PATH	11.8 m
TERRACE SIZE	15.6 m²
DDA COMPLIANCE	



Cera Stribley
Architecture
Interior Design

Cera Stribley Pty. Ltd.
ABN 29 350 585 700

+ 61 3 9533 2582
info@cs-a.com.au
www.cs-a.com.au
Studio 5, 249 Chapel St
Prahran VIC 3181 AUS

NOTES
Do not scale. Contractor must verify all dimensions on site before commencing any work or preparing shop drawings which must be approved by the architect before manufacture. Any extra entailed work shown on this drawing must be claimed and approved before proceeding.

COPYRIGHT
Reproduction of the whole or part of the document constitutes an infringement of copyright. The information, ideas and concepts contained in this document is / are confidential. The recipient(s) of this document is / are prohibited from disclosing such information, ideas and concepts to any person without prior written consent of the copyright holder.

REV DATE	REVISION	BY	CHK
A	22.09.2021 TOWN PLANNING	DC	DC

REV DATE	REVISION	BY	CHK

PROJECT
HANSWORTH
149 HANSWORTH STREET, MULGRAVE 3170
MIXED USED DEVELOPMENT

DRAWING STATUS

JOB N° 20090
REVISION N° A
DATE 22.09.2021
SCALE 1:50 @ A1
DRAWN BY Author
CHECKED BY Checker

DRAWING TITLE
THREE BED TYPOLOGIES 01

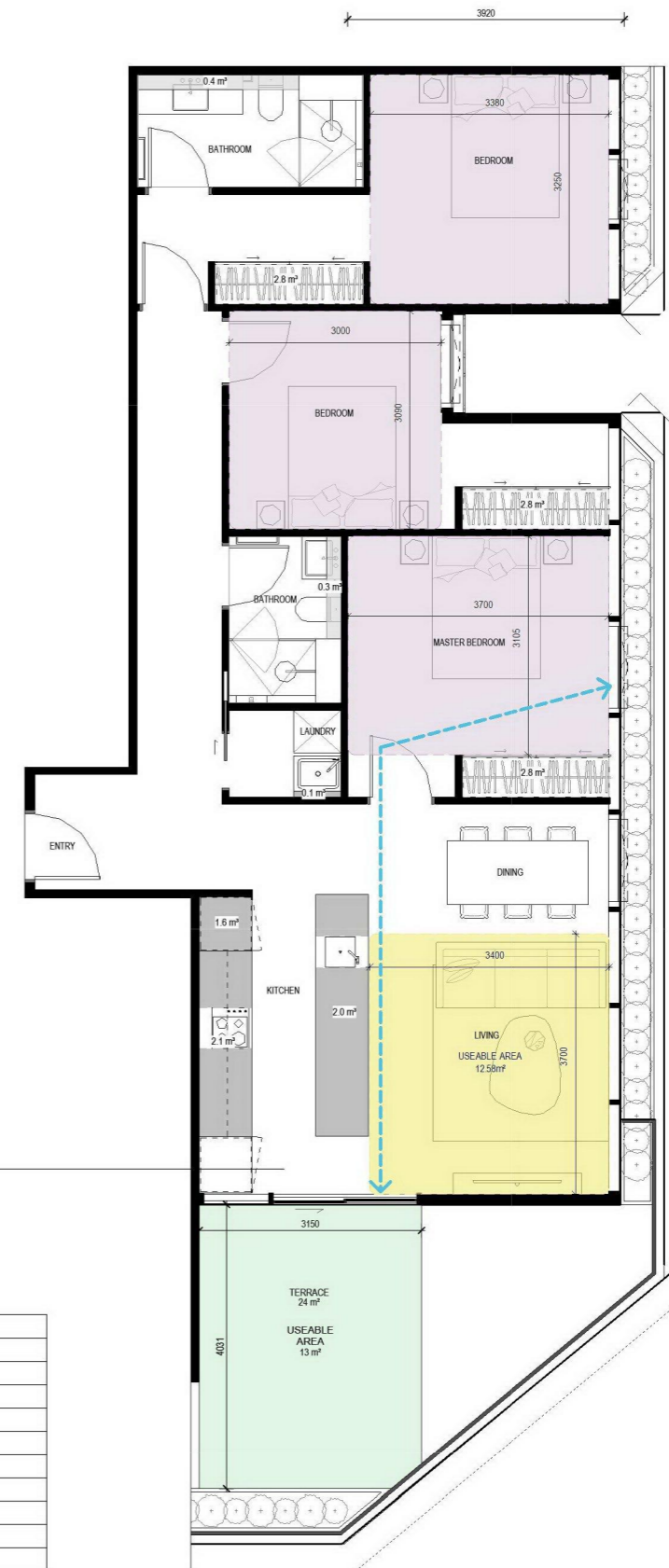
TP.5018



TYPE D3

T1.702, 801
3 BED 2 BATH
103 m²

MAIN BEDROOM SIZE	4080 X 3000mm
SECOND BEDROOM SIZE	3000 X 3000mm
THIRD BEDROOM SIZE	3390 X 3000mm
FOURTH BEDROOM SIZE	
LIVING ROOM SIZE	3805 X 3330mm
HABITABLE ROOM DEPTH	8850mm
SNORKEL	
INTERNAL STORAGE	15.7 m²
BREEZE PATH	10.3 m
TERRACE SIZE	18 m²
DDA COMPLIANCE	



TYPE D4

T1.703, 802
3 BED 2 BATH
108 m²

MAIN BEDROOM SIZE	3700 X 3105mm
SECOND BEDROOM SIZE	3380 X 3250mm
THIRD BEDROOM SIZE	3090 X 3000mm
FOURTH BEDROOM SIZE	
LIVING ROOM SIZE	3700 X 3400mm
HABITABLE ROOM DEPTH	4100mm
SNORKEL	
INTERNAL STORAGE	14.5 m²
BREEZE PATH	9.6 m
TERRACE SIZE	24 m²
DDA COMPLIANCE	

NOTES

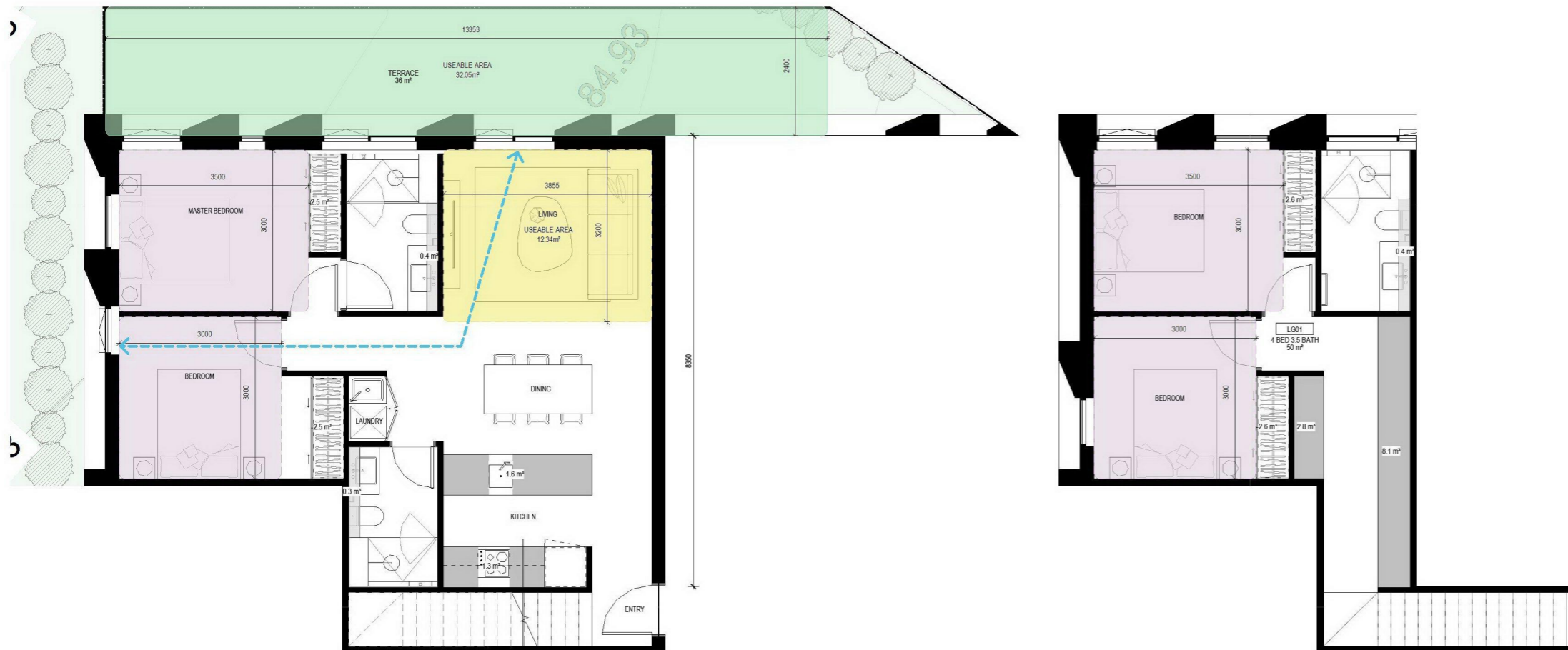
Do not scale. Contractor must verify all dimensions on site before commencing any work or preparing shop drawings which must be approved by the architect before manufacture. Any extra entailed work shown on this drawing must be claimed and approved before proceeding.

COPYRIGHT

Reproduction of the whole or part of the document constitutes an infringement of copyright. The information, ideas and concepts contained in this document is / are confidential. The recipient(s) of this document is / are prohibited from disclosing such information, ideas and concepts to any person without prior written consent of the copyright holder.

REV	DATE	REVISION	BY	CHK
A	22.09.2021	TOWN PLANNING	DC	DC

REV	DATE	REVISION	BY	CHK



TYPE E1
 LG01
 4 BED 3.5 BATH
 84 m²

MAIN BEDROOM SIZE	3500 X 3000mm
SECOND BEDROOM SIZE	3000 X 3000mm
THIRD BEDROOM SIZE	3500 X 3000mm
FOURTH BEDROOM SIZE	3000 X 3000mm
LIVING ROOM SIZE	3855 X 3200mm
HABITABLE ROOM DEPTH	8350mm
SNORKEL	
INTERNAL STORAGE	25.1 m³
BREEZE PATH	10.0 m
TERRACE SIZE	36 m²
DDA COMPLIANCE	

NOTES

Do not scale. Contractor must verify all dimensions on site before commencing any work or preparing shop drawings which must be approved by the architect before manufacture. Any extra entailed work shown on this drawing must be claimed and approved before proceeding.

COPYRIGHT

Reproduction of the whole or part of the document constitutes an infringement of copyright. The information, ideas and concepts contained in this document is / are confidential. The recipient(s) of this document is / are prohibited from disclosing such information, ideas and concepts to any person without prior written consent of the copyright holder.

REV DATE	REVISION	BY	CHK
A	22.09.2021 TOWN PLANNING	DC	DC

REV DATE	REVISION	BY	CHK

PROJECT
HANSWORTH
 149 HANSWORTH STREET, MULGRAVE 3170
 MIXED USED DEVELOPMENT
 DRAWING STATUS

JOB N° 20090
 REVISION N° A
 DATE 22.09.2021
 SCALE 1:50 @ A1
 DRAWN BY Author
 CHECKED BY Checker

DRAWING TITLE
FOUR BED TYPOLOGIES 01
 TP.5020

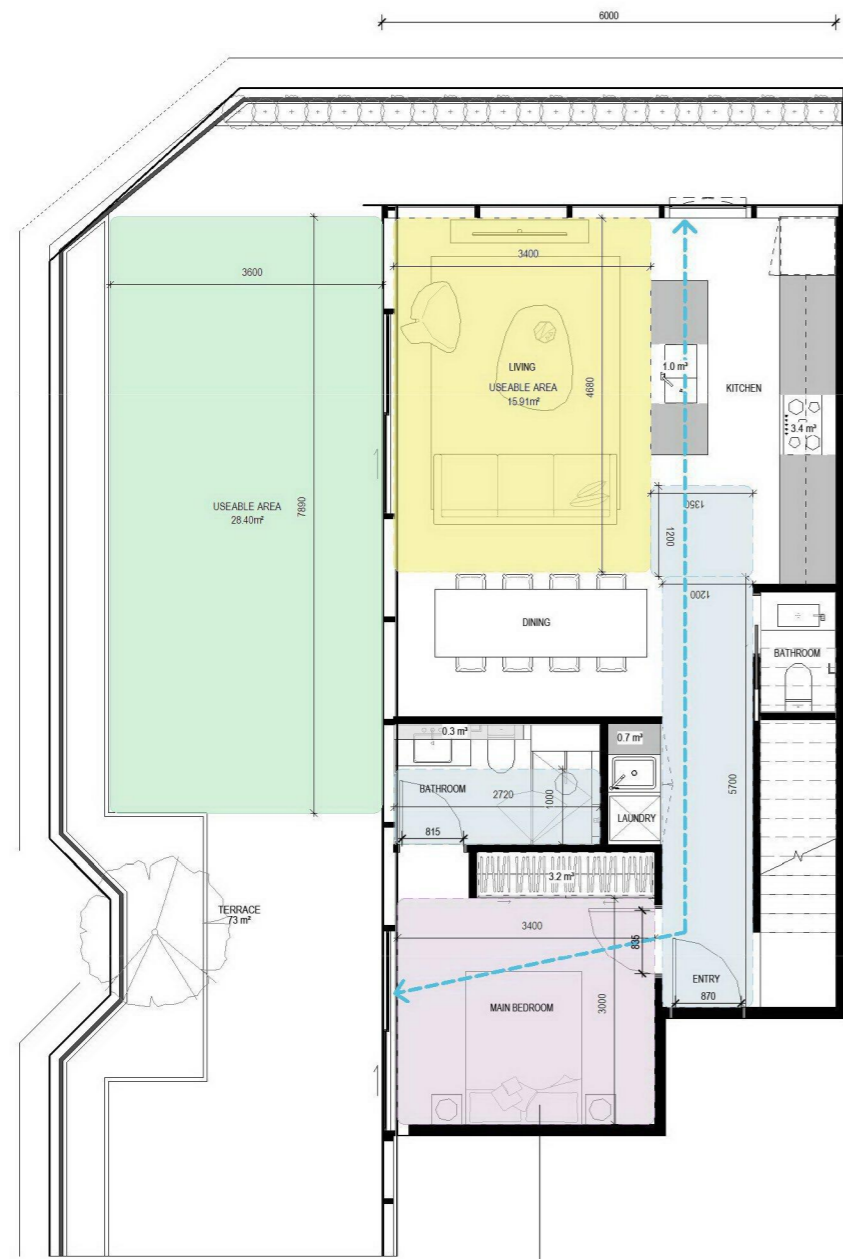


TYPE E2
 LG04
 4 BED 3.5 BATH
 67 m²

MAIN BEDROOM SIZE	3655 X 3095mm
SECOND BEDROOM SIZE	3600 X 3020mm
THIRD BEDROOM SIZE	3115 X 3000mm
FOURTH BEDROOM SIZE	3200 X 3000mm
LIVING ROOM SIZE	4050 X 3850mm
HABITABLE ROOM DEPTH	8865mm
SNORKEL	
INTERNAL STORAGE	18.4 m ²
BREEZE PATH	10.3 m
TERRACE SIZE	25 m ²
DDA COMPLIANCE	

REV	DATE	REVISION	BY	CHK
A	22.09.2021	TOWN PLANNING	DC	DC

REV	DATE	REVISION	BY	CHK



TYPE E3
T1.701
4 BED 3.5 BATH
69 m²

MAIN BEDROOM SIZE	3400 X 3000mm
SECOND BEDROOM SIZE	3250 x 3010mm
THIRD BEDROOM SIZE	3450 x 3000mm
FOURTH BEDROOM SIZE	3500 x 3050mm
LIVING ROOM SIZE	4680 x 3400mm
HABITABLE ROOM DEPTH	6000mm
SNORKEL	
INTERNAL STORAGE	21.6 m³
BREEZE PATH	13.3 m
TERRACE SIZE	73 m²
DDA COMPLIANCE	B

CERA STRIBLEY

Cera Stribley
Architecture
Interior Design

Cera Stribley Pty. Ltd.
ABN 29 350 585 700

+ 61 3 9533 2582
info@cs-a.com.au
www.cs-a.com.au
Studio 5, 249 Chapel St
Prahran VIC 3181 AUS

NOTES
Do not scale. Contractor must verify all dimensions on site before commencing any work or preparing shop drawings which must be approved by the architect before manufacture. Any extra entailed work shown on this drawing must be claimed and approved before proceeding.

COPYRIGHT
Reproduction of the whole or part of the document constitutes an infringement of copyright. The information, ideas and concepts contained in this document is/are confidential. The recipient(s) of this document is/are prohibited from disclosing such information, ideas and concepts to any person without prior written consent of the copyright holder.

REV	DATE	REVISION	BY	CHK
A	22.09.2021	TOWN PLANNING	DC	DC

REV	DATE	REVISION	BY	CHK

PROJECT
HANSWORTH
149 HANSWORTH STREET, MULGRAVE 3170
MIXED USED DEVELOPMENT

DRAWING STATUS

JOB N° 20090
REVISION N° A
DATE 22.09.2021
SCALE 1:50 @ A1
DRAWN BY Author
CHECKED BY Checker

DRAWING TITLE
FOUR BED TYPOLOGIES 03

TP.5022



8625

TYPE E4
T1.704
4 BED 3.5 BATH
76 m²

MAIN BEDROOM SIZE	3485 X 3000mm
SECOND BEDROOM SIZE	3280 X 3000mm
THIRD BEDROOM SIZE	3200 X 3000mm
FOURTH BEDROOM SIZE	3450 X 3065mm
LIVING ROOM SIZE	5175 X 4120mm
HABITABLE ROOM DEPTH	8625mm
SNORKEL	
INTERNAL STORAGE	22.5 m³
BREEZE PATH	8339.0 m
TERRACE SIZE	94 m²
DDA COMPLIANCE	



REV	DATE	REVISION	BY	CHK
A	22.09.2021	TOWN PLANNING	DC	DC

REV	DATE	REVISION	BY	CHK