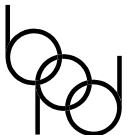
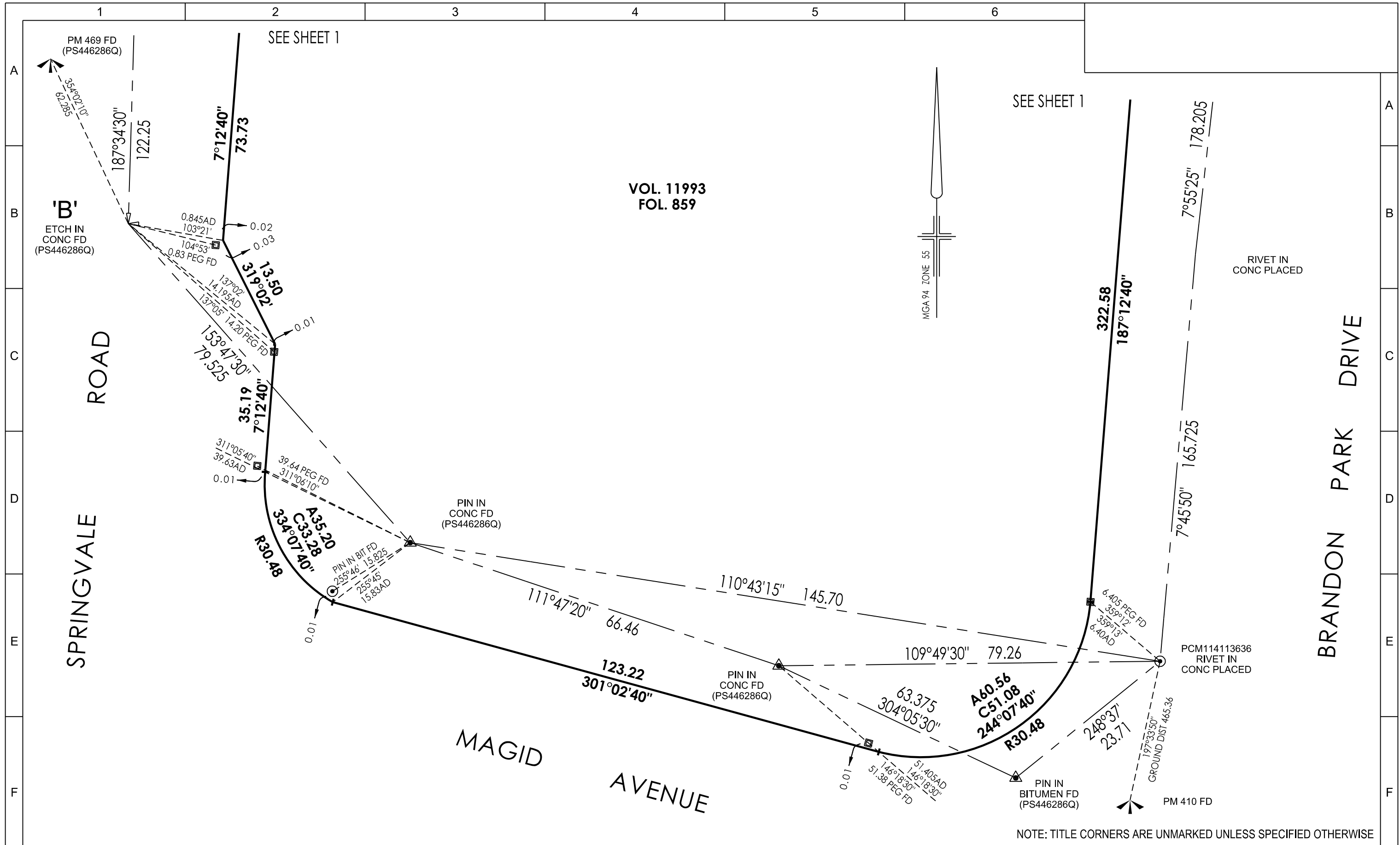


VOL. 11993
FOL. 859

SEE SHEET 2

NOTE: TITLE CORNERS ARE UNMARKED UNLESS SPECIFIED OTHERWISE

AMENDMENTS		ABSTRACT OF FIELD RECORDS	NOTATIONS	CERTIFICATION BY SURVEYOR
		COUNTY OF BOURKE PARISH OF MULGRAVE CROWN PORTION 79 (PART)	MGA94 CONNECTION MADE IN ACCORDANCE WITH OSG DIRECTIVES (JULY 2018) 2.3.4 & 2.3.5 VERIFIED ON GROUND MARK MULGRAVE PM410. DATUM 'A' - 'B' - 'C' VIDE PS446286Q.	SURVEYOR: DAVID VERSTEEGEN DATE OF SURVEY: 03/03/2020
 <p>Breese Pitt Dixon Pty Ltd 1/19 Cato Street Hawthorn East Vic 3123 Ph: 8823 2300 Fax: 8823 2310 www.bpd.com.au info@bpd.com.au</p>		<p>SURVEYORS REFERENCE 10230</p>	<p>ORIGINAL SHEET SIZE : A3 SHEET 1 OF 2</p>	



Breese Pitt Dixon Pty Ltd
 1/19 Cato Street
 Hawthorn East Vic 3123
 Ph: 8823 2300 Fax: 8823 2310
 www.bpd.com.au info@bpd.com.au

SURVEYORS
REFERENCE
10230

ABSTRACT OF FIELD RECORDS
 SEE SHEET 1 FOR CROWN DESCRIPTION DETAILS

ORIGINAL
SHEET SIZE : A3

SHEET 2 OF 2