



no.	description	drawn	approved	date
A	ORIGINAL ISSUE	GY	FK	08.09.21

LEGEND	
	DOMAIN BOUNDARY
	SITE BOUNDARY
	CADASTRE

IMAGERY SOURCE: Nearmap (06-09-2020)

ADVERTISED COPY

SCALE 1:2,000(A3) METRES

Projection: GDA 1994 MGA Zone 55

drawn	GDY
approved	FK
date	08.09.2021
scale	1:2,000
original size	A3



client:	HUNTINGDALE ESTATE NOMINEES PTY LTD		
project:	GEOTECHNICAL SITE INVESTIGATION 1221-1249 CENTRE ROAD & 22 TALBOT AVENUE OAKLEIGH SOUTH, VICTORIA		
title:	SITE GEOTECHNICAL DOMAINS		
project no:	GEOTABTF09257AA-EE	figure no:	FIGURE 1
		rev:	A



no.	description	drawn	approved	date
A	ORIGINAL ISSUE	AM	FK	29.11.21

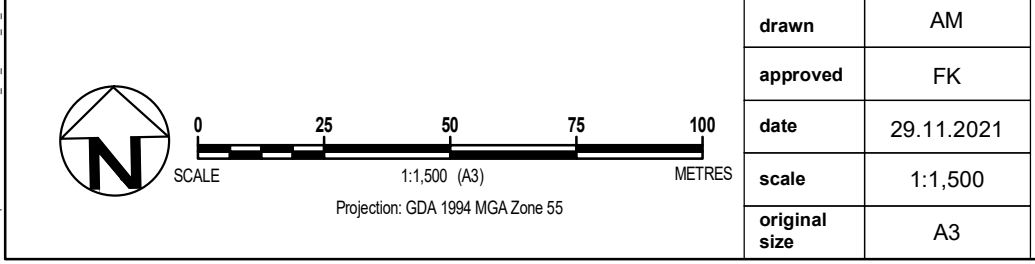
drawn	AM
approved	FK
date	29.11.2021
scale	1:1,500
original size	A3

LEGEND
 - - - CONTOUR LINE (m) - - - SITE BOUNDARY - - - ZONE BOUNDARY
 - - - FENCE - - - CADASTRE - - - DOMAIN BOUNDARY

IMAGERY SOURCE: Nearmap (29-04-2021)

TETRA TECH COFFEY

client: HUNTINGDALE ESTATE NOMINEES PTY LTD
 project: GEOTECHNICAL SITE INVESTIGATION
 1221-1249 CENTRE ROAD & 22 TALBOT AVENUE
 OAKLEIGH SOUTH, VICTORIA
 title: EXISTING CONDITIONS PLAN
 (DOMAINS 2A, 2B, 3A, 3B, 5 & 6)
 project no: GEOTABTF09257AA-EH figure no: FIGURE 3 rev: A



MDO Template Reference: 0825744_EH_GIS001_v0_3



no.	description	drawn	approved	date
A	ORIGINAL ISSUE	AM	FK	29.11.21

drawn	AM
approved	FK
date	29.11.2021
scale	1:1,500
original size	A3

STOCKPILE AND BATTER

- PRELOAD STOCKPILE AT RL 66M
- PRELOAD STOCKPILE AT RL 65M
- PRELOAD STOCKPILE AT RL 64.5M
- TRANSITION BATTER 3H:1V

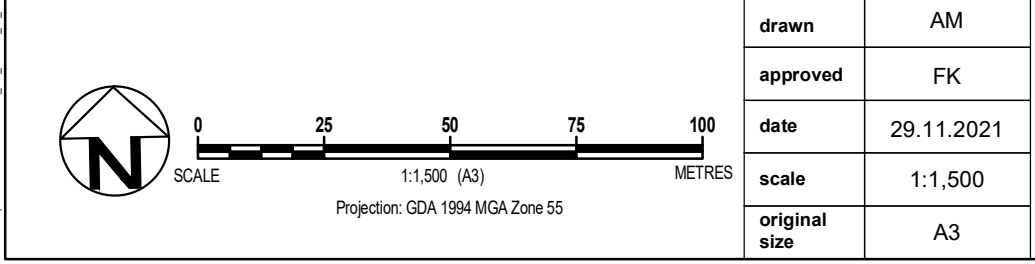
IMAGERY SOURCE: Nearmap (29-04-2021)

client: HUNTINGDALE ESTATE NOMINEES PTY LTD

project: GEOTECHNICAL SITE INVESTIGATION
1221-1249 CENTRE ROAD & 22 TALBOT AVENUE
OAKLEIGH SOUTH, VICTORIA

title: CROSS SECTIONS LOCALITY PLAN
(DOMAINS 2A, 2B, 3A, 3B, 5 & 6)

project no: GEOTABTF09257AA-EH **figure no:** FIGURE 4 **rev:** A





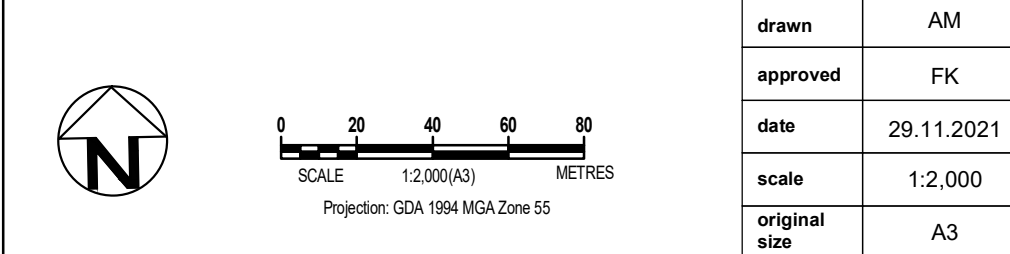
no.	description	drawn	approved	date
A	ORIGINAL ISSUE	AM	FK	16.11.21

STOCKPILE AND BATTER	
	PRELOAD STOCKPILE AT RL 66M
	PRELOAD STOCKPILE AT RL 65M
	PRELOAD STOCKPILE AT RL 64.5M
	TRANSITION BATTER 3H:1V

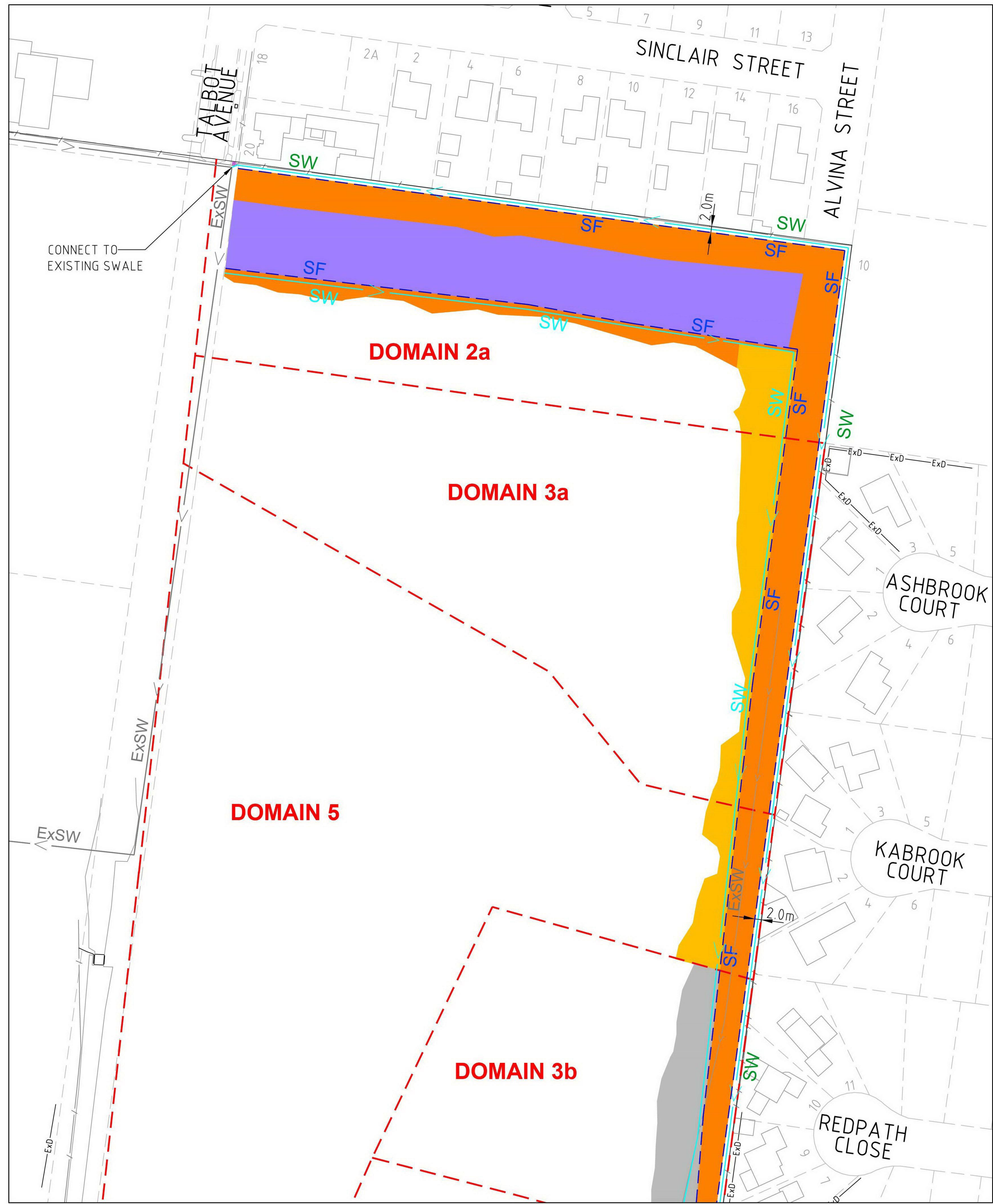
IMAGERY SOURCE: Nearmap (06-09-2020)

drawn	AM
approved	FK
date	29.11.2021
scale	1:2,000
original size	A3

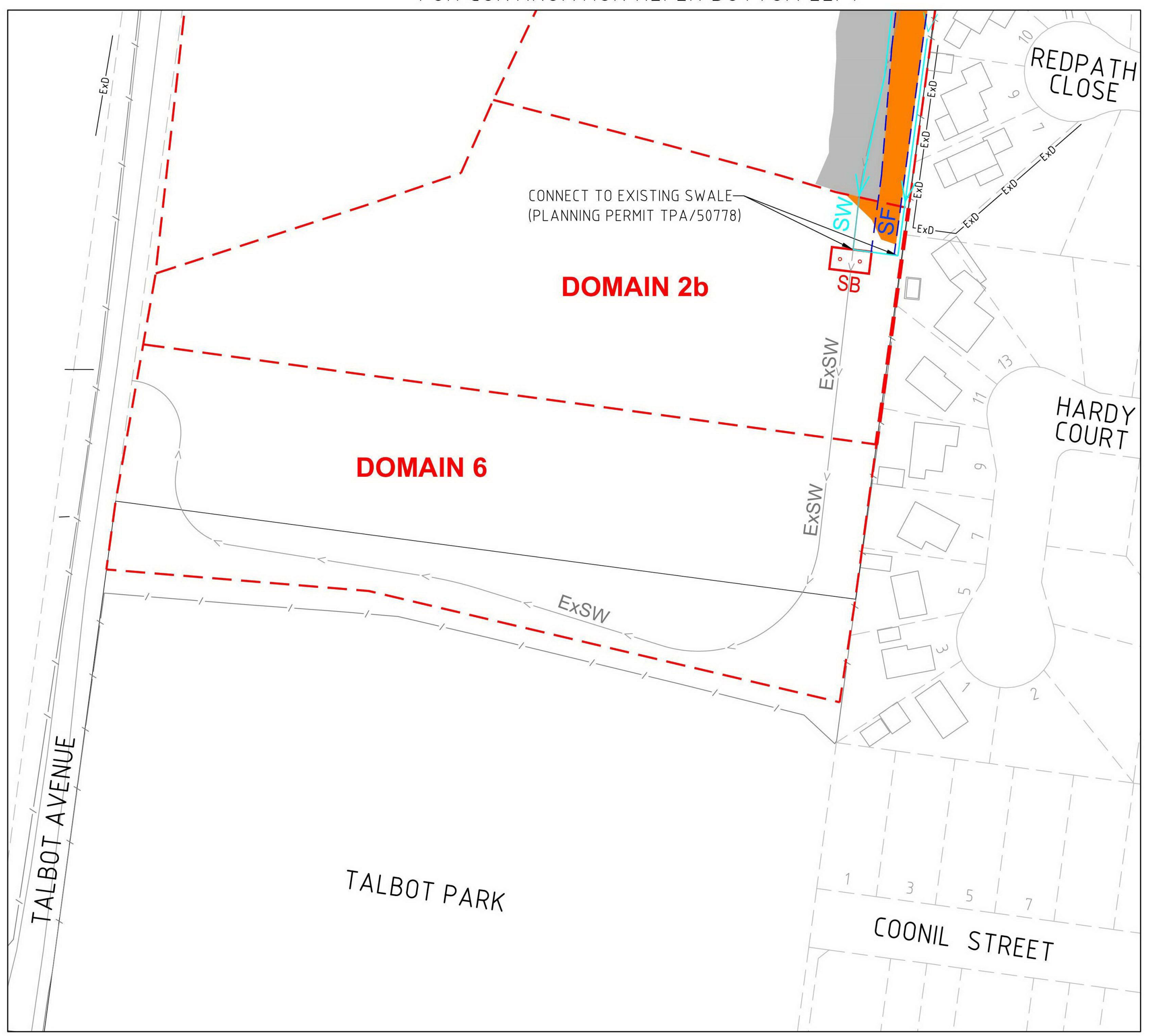
client:	HUNTINGDALE ESTATE NOMINEES PTY LTD		
project:	GEOTECHNICAL SITE INVESTIGATION 1221-1249 CENTRE ROAD & 22 TALBOT AVENUE OAKLEIGH SOUTH, VICTORIA		
title:	LONG SECTIONS LOCALITY PLAN		
project no:	GEOTABTF09257AA-EE	figure no:	FIGURE 5
rev:	B		



M:\0_Templates\Reference\02CF744_EH_GS008_v0_3



FOR CONTINUATION REFER TOP RIGHT



FOR CONTINUATION REFER BOTTOM LEFT

LEGEND

- EXISTING SWALE
- SWALE (REFER TO DETAIL ON DWG EM004)
- SILT FENCE (REFER TO DETAIL ON DWG EM004)
- DOMAIN BOUNDARY
- STRAW BALE SEDIMENT TRAP (REFER TO DETAIL ON DWG EM002)
- PRELOAD STOCKPILE AT RL66m
- PRELOAD STOCKPILE AT RL65m
- PRELOAD STOCKPILE AT RL64.5m
- TRANSITION BATTER 3H:1V

NOTE

INSPECT MONTHLY AND MAINTAIN SEDIMENT CONTROLS AND DRAINAGE SYSTEM, PARTICULARLY FOLLOWING STORMS. REMOVE SEDIMENT COLLECTED BY THE SEDIMENT FENCE, REPLACE ANY CLOGGED SEDIMENT FENCE AND ADDRESS ANY SAGGING, UNDERMINING OR TEARS. REPAIR EROSION IN DRAINAGE CHANNELS AND CLEAN OUT EXISTING SWALES TO ENSURE FREE FLOW.

WARNING

OVERHEAD ELECTRICITY PRESENT IN WORK AREA

CAD FILE: C:\V2025\ENERGY\DATA\VP\PAF02\19017-00_247A04_ENGINEERING\01_CAD\19017-00-EM003.DWG
 PLOT DATE: 23/11/2021 11:45:18 PM

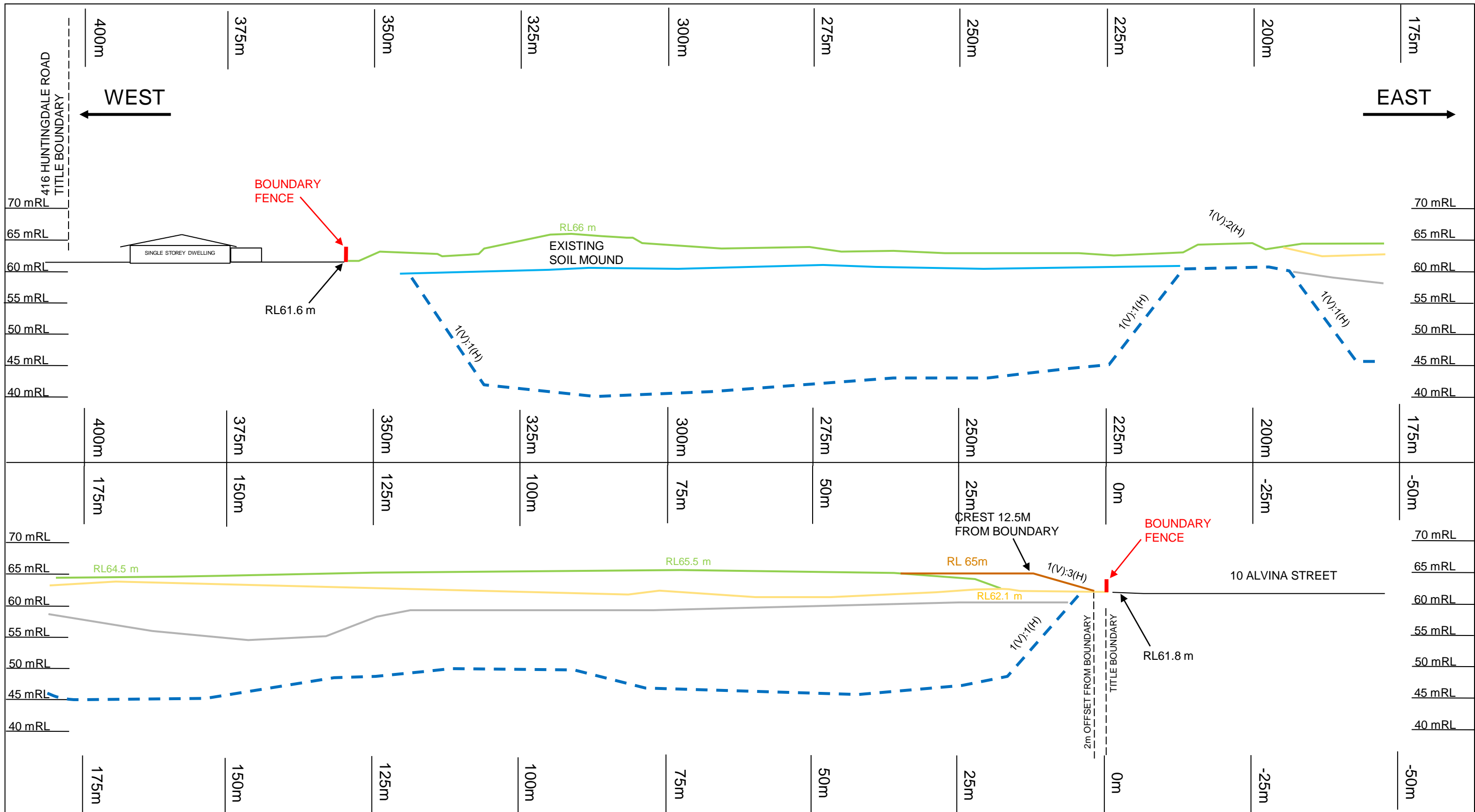
DESIGNED:	T. MUSTAC		
DESIGNED:	C. DELARUE		
APPROVED:	C. DELARUE		
APPROVED:	C. DELARUE		
REV	DESCRIPTION	APPROVED	DATE
C	GENERAL AMENDMENTS	C.D.	23.11.21
B	PRELIMINARY ISSUE	C.D.	15.11.21
A	PRELIMINARY ISSUE	C.D.	12.11.21



CLIENT:

Ground Floor, 207-213 Waverley Road,
Malvern East VIC 3145
TEL : 03 8573 1500 verveprojects.com

COUNCIL:	CITY OF MONASH
PROJECT:	TALBOT QUARRY 1221-1249 CENTRE ROAD OAKLEIGH
TITLE:	SITE ENVIRONMENTAL MANAGEMENT PLAN DOMAINS 2a, 3a, 3b & 5
ISSUE:	PRELIMINARY
MELWAY REF:	78 J1
PROJECT No:	19017-00
DWG No:	EM003
REVISION:	C



LEGEND				
	PRELOAD LEVEL		TOP OF OLD FILL (APPROX.)	
	INFERRED PIT BATTER (APPROX.)		EXISTING GROUND LEVEL	
	TOP OF LANDFILL (APPROX.)		TOP OF SLIMES	

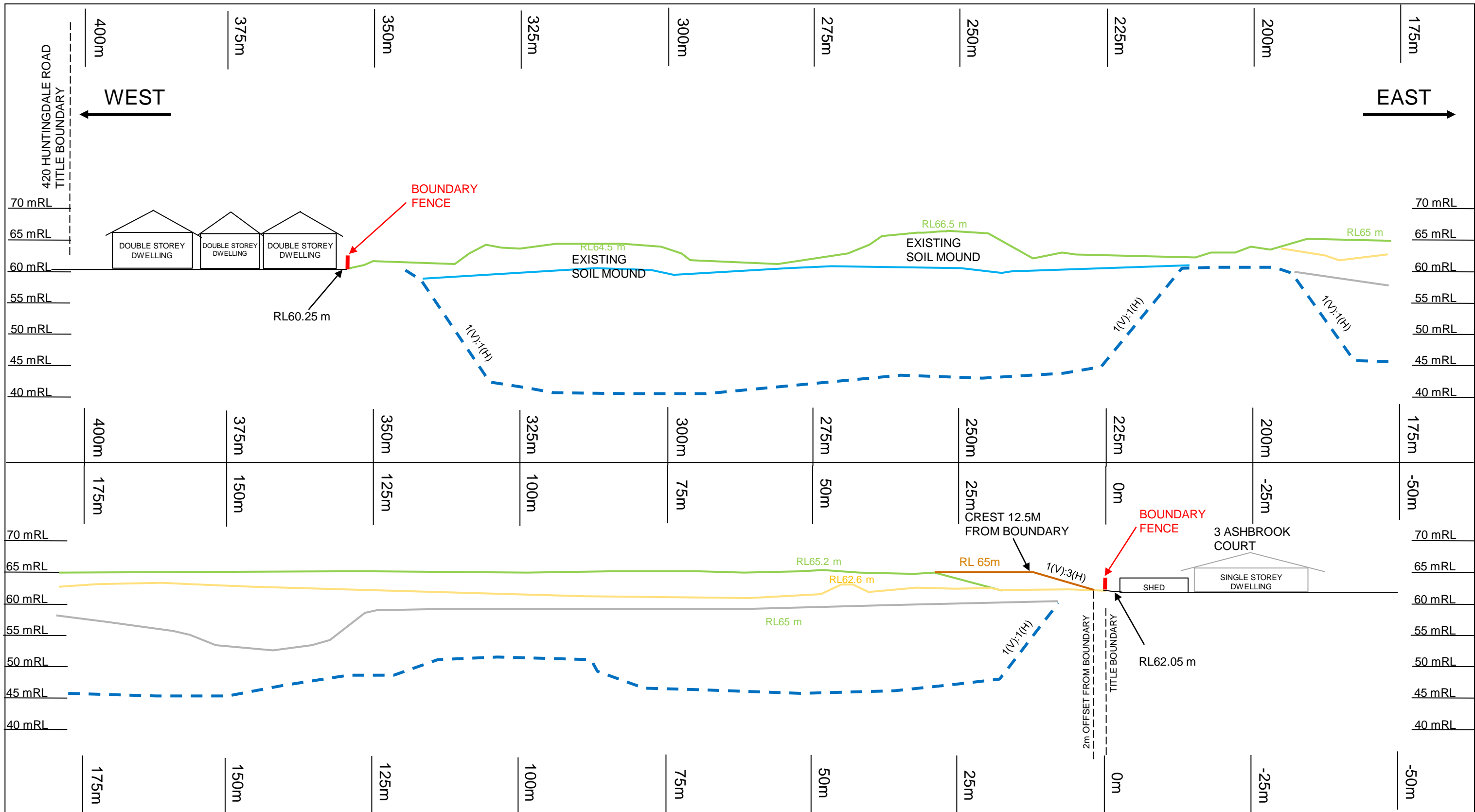
revision	description	drawn	approved	date
V0		FK	IP	16.11.21

NOTES:
1- The scale is vertically exaggerated

drawn	FK
approved	IP
date	16.11.21
scale	AS SHOWN
original size	A3



client:	HUNTINGDALE ESTATE NOMINEES PTY LTD	
project:	TALBOT AVENUE, OAKLEIGH SOUTH	
title:	SECTION I	
project no:	GEOTABTF092574AA	figure no: 6



LEGEND	
	PRELOAD LEVEL
	TOP OF OLD FILL (APPROX.)
	INFERRED PIT BATTER (APPROX.)
	EXISTING GROUND LEVEL
	TOP OF LANDFILL (APPROX.)
	TOP OF SLIMES

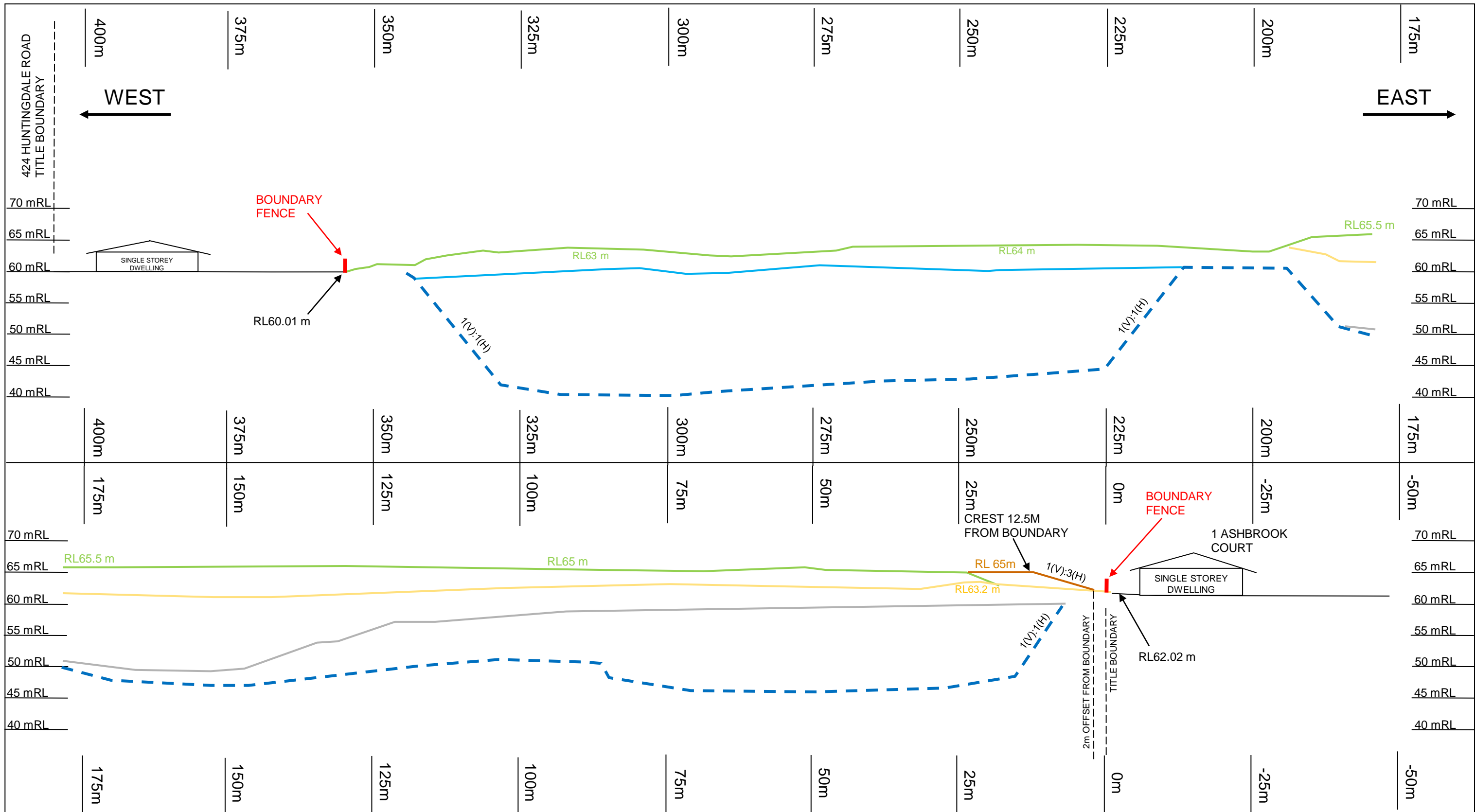
revision	description	drawn	approved	date
V0		FK	IP	16.11.21

NOTES:
1- The scale is vertically exaggerated

drawn	FK
approved	IP
date	16.11.21
scale	AS SHOWN
original size	A3



client:	HUNTINGDALE ESTATE NOMINEES PTY LTD	
project:	TALBOT AVENUE, OAKLEIGH SOUTH	
title:	SECTION II	
project no:	GEOTABTF092574AA	figure no: 7



LEGEND			
	PRELOAD LEVEL		TOP OF OLD FILL (APPROX.)
	INFERRED PIT BATTER (APPROX.)		EXISTING GROUND LEVEL
	TOP OF LANDFILL (APPROX.)		TOP OF SLIMES

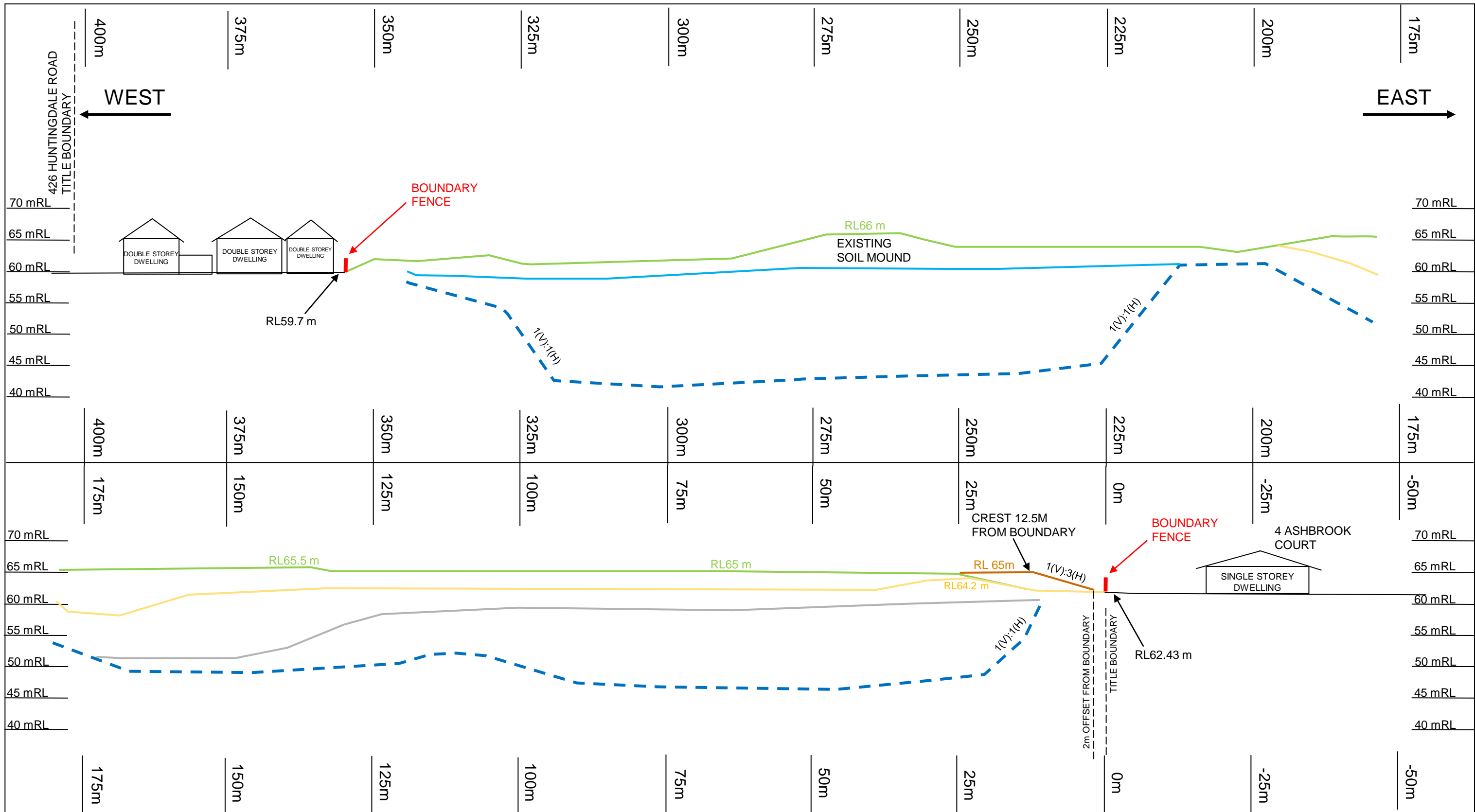
revision	description	drawn	approved	date
	V0	FK	IP	16.11.21

NOTES:
1- The scale is vertically exaggerated

drawn	FK
approved	IP
date	16.11.21
scale	AS SHOWN
original size	A3



client:	HUNTINGDALE ESTATE NOMINEES PTY LTD	
project:	TALBOT AVENUE, OAKLEIGH SOUTH	
title:	SECTION III	
project no:	GEOTABTF092574AA	figure no: 8



LEGEND			
	PRELOAD LEVEL		TOP OF OLD FILL (APPROX.)
	INFERRED PIT BATTER (APPROX.)		EXISTING GROUND LEVEL
	TOP OF LANDFILL (APPROX.)		TOP OF SLIMES

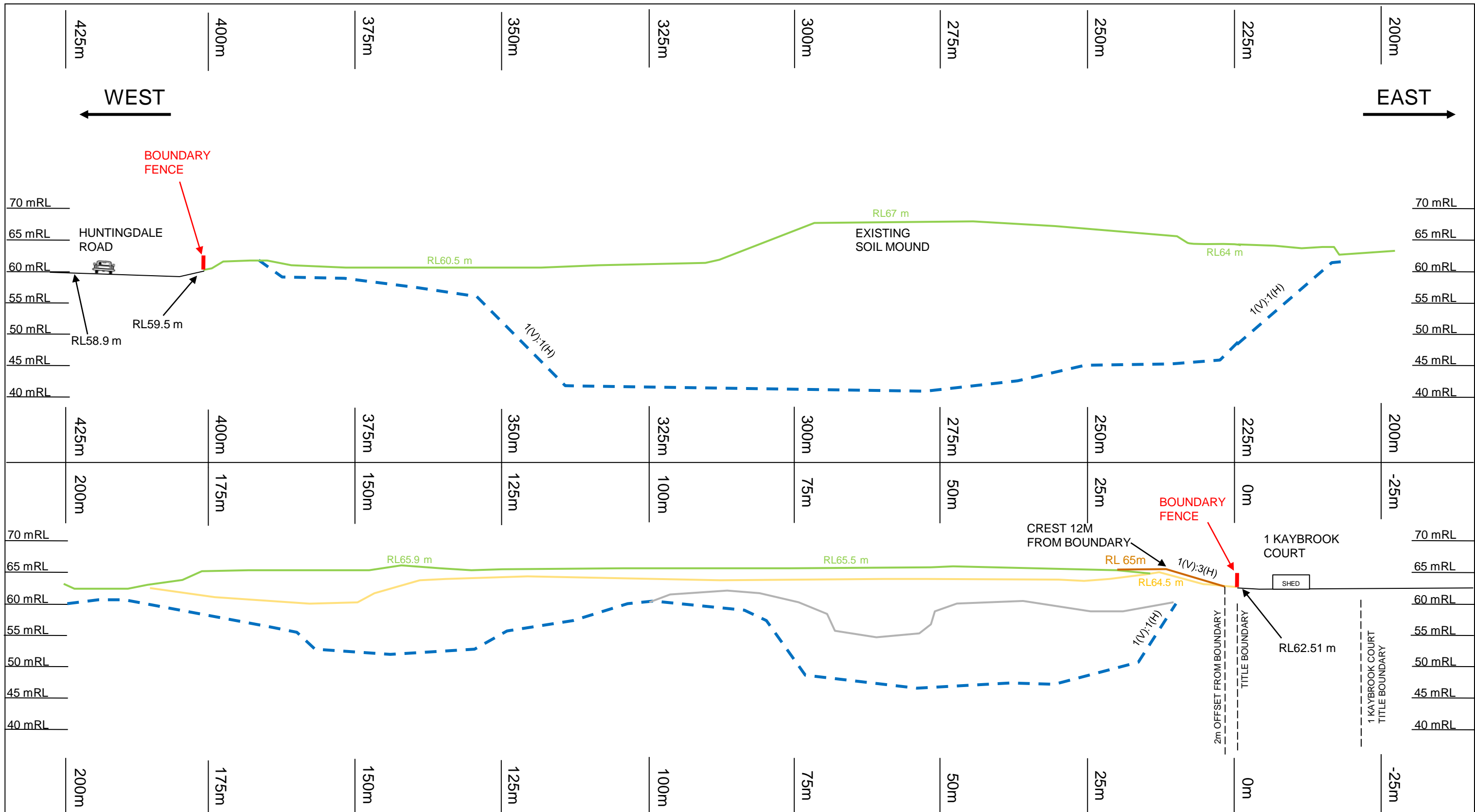
revision	description	drawn	approved	date
	V0	FK	IP	16.11.21

NOTES:
1- The scale is vertically exaggerated

drawn	FK
approved	IP
date	16.11.21
scale	AS SHOWN
original size	A3



client:	HUNTINGDALE ESTATE NOMINEES PTY LTD	
project:	TALBOT AVENUE, OAKLEIGH SOUTH	
title:	SECTION IV	
project no:	GEOTABTF092574AA	figure no: 9



LEGEND				
	PRELOAD LEVEL		TOP OF OLD FILL (APPROX.)	
	INFERRED PIT BATTER (APPROX.)		EXISTING GROUND LEVEL	
	TOP OF LANDFILL (APPROX.)		TOP OF SLIMES	

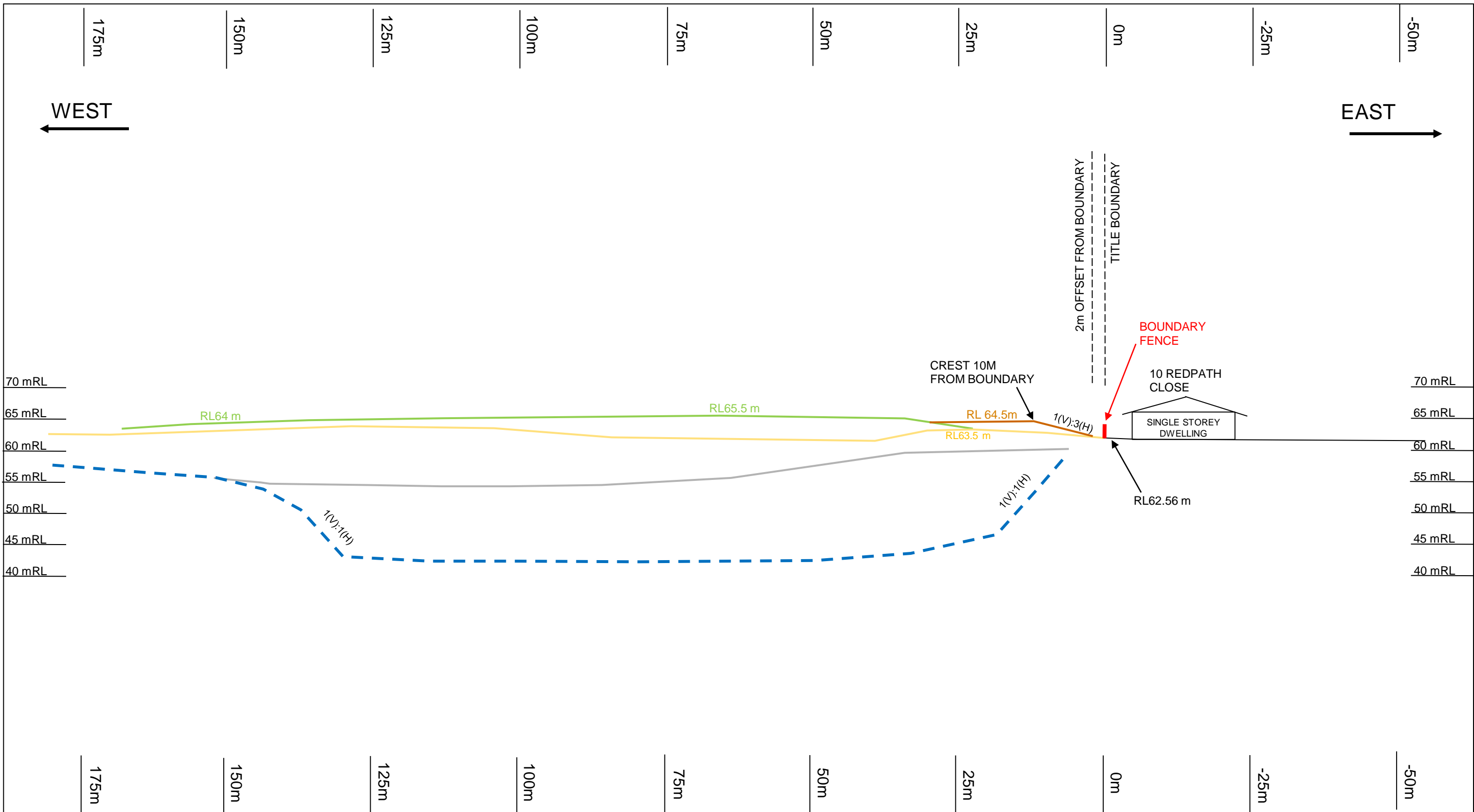
revision	description	drawn	approved	date
V0		FK	IP	16.11.21

NOTES:
1- The scale is vertically exaggerated

drawn	FK
approved	IP
date	16.11.21
scale	AS SHOWN
original size	A3



client:	HUNTINGDALE ESTATE NOMINEES PTY LTD		
project:	TALBOT AVENUE, OAKLEIGH SOUTH		
title:	SECTION V		
project no:	GEOTABTF092574AA	figure no:	10



LEGEND			
	PRELOAD LEVEL		TOP OF OLD FILL (APPROX.)
	INFERRED PIT BATTER (APPROX.)		EXISTING GROUND LEVEL
	TOP OF LANDFILL (APPROX.)		TOP OF SLIMES

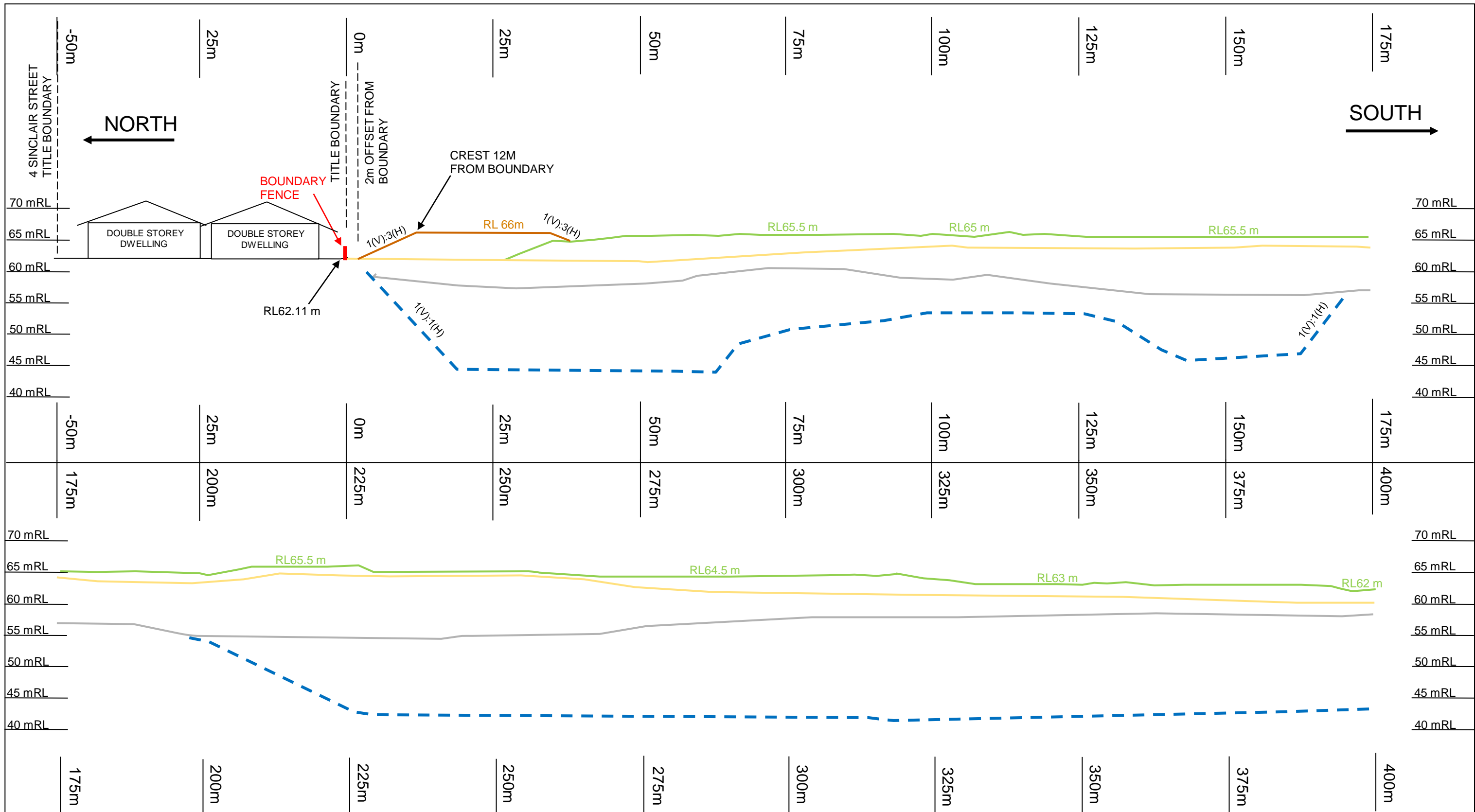
revision	description	drawn	approved	date
V0		FK	IP	16.11.21

NOTES:
1- The scale is vertically exaggerated

drawn	FK
approved	IP
date	16.11.21
scale	AS SHOWN
original size	A3



client:	HUNTINGDALE ESTATE NOMINEES PTY LTD	
project:	TALBOT AVENUE, OAKLEIGH SOUTH	
title:	SECTION VI	
project no:	GEOTABTF092574AA	figure no: 11



LEGEND	
	PRELOAD LEVEL
	TOP OF OLD FILL (APPROX.)
	EXISTING GROUND LEVEL
	TOP OF SLIMES
	INFERRED PIT BATTER (APPROX.)
	TOP OF LANDFILL (APPROX.)

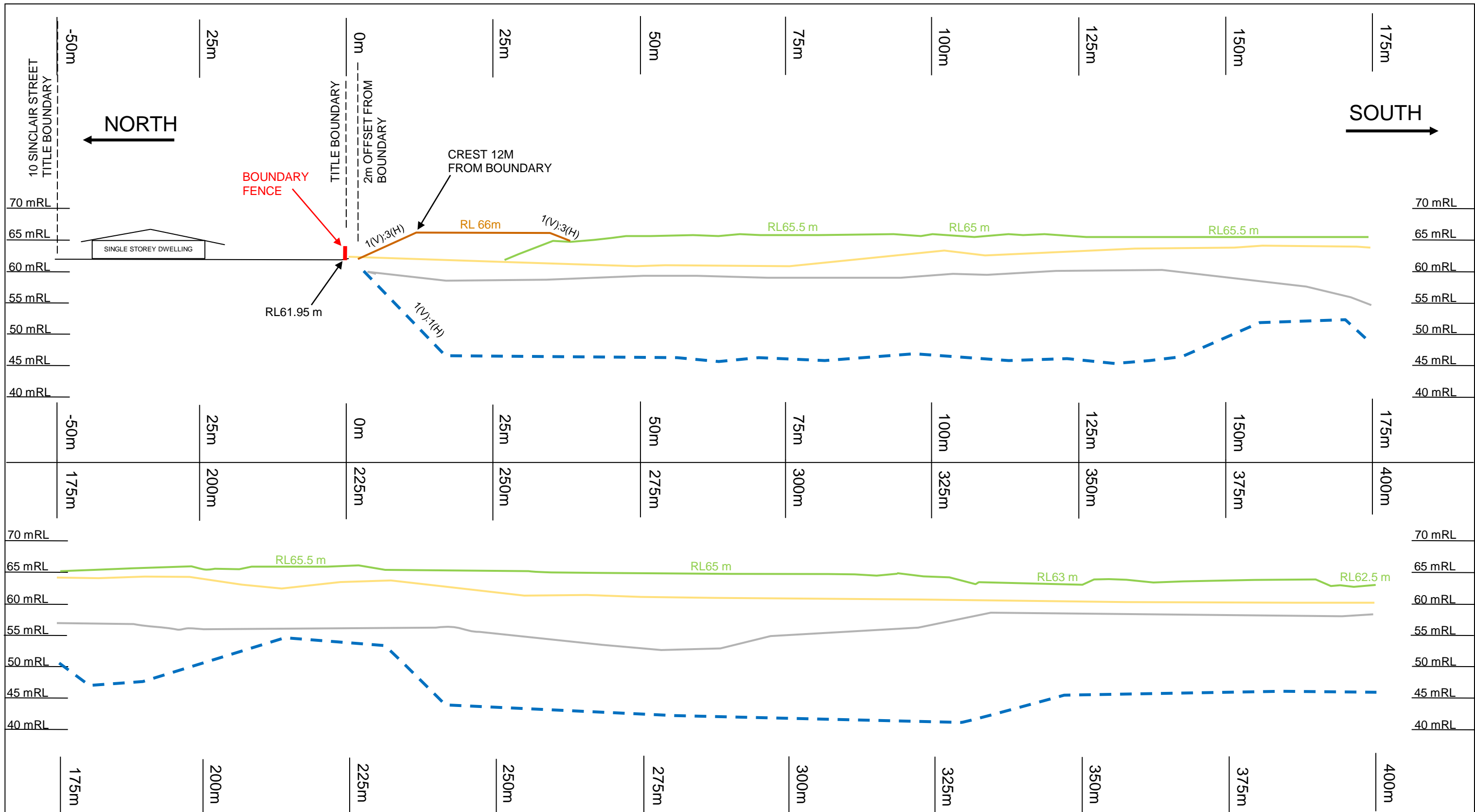
revision	description	drawn	approved	date
V0		FK	IP	16.11.21

NOTES:
1- The scale is vertically exaggerated

drawn	FK
approved	IP
date	16.11.21
scale	AS SHOWN
original size	A3



client:	HUNTINGDALE ESTATE NOMINEES PTY LTD	
project:	TALBOT AVENUE, OAKLEIGH SOUTH	
title:	SECTION VII	
project no:	GEOTABTF092574AA	figure no: 12



LEGEND	
	PRELOAD LEVEL
	TOP OF OLD FILL (APPROX.)
	EXISTING GROUND LEVEL
	TOP OF SLIMES
	INFERRED PIT BATTER (APPROX.)
	TOP OF LANDFILL (APPROX.)

revision	description	drawn	approved	date
V0		FK	IP	16.11.21

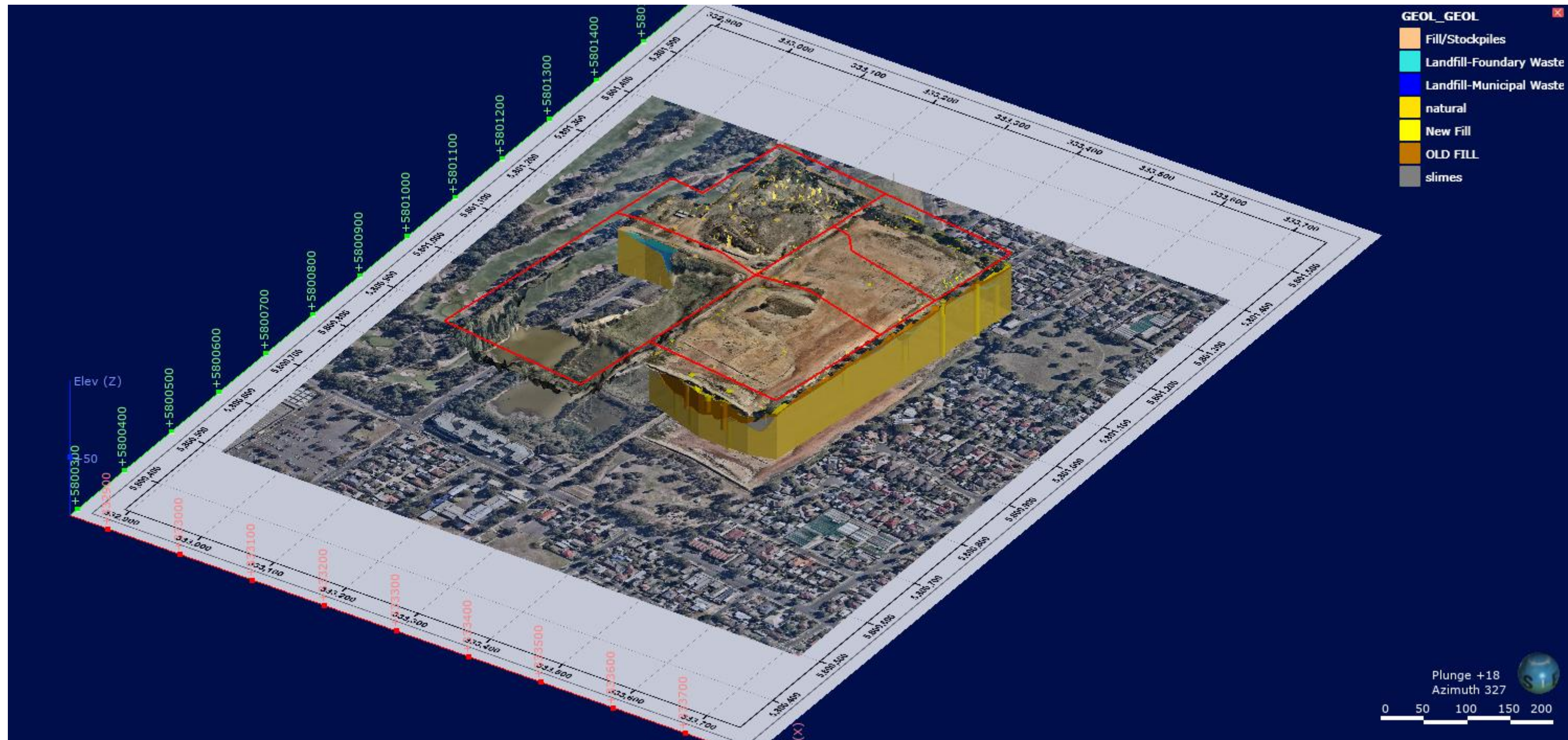
NOTES:
1- The scale is vertically exaggerated

drawn	FK
approved	IP
date	16.11.21
scale	AS SHOWN
original size	A3

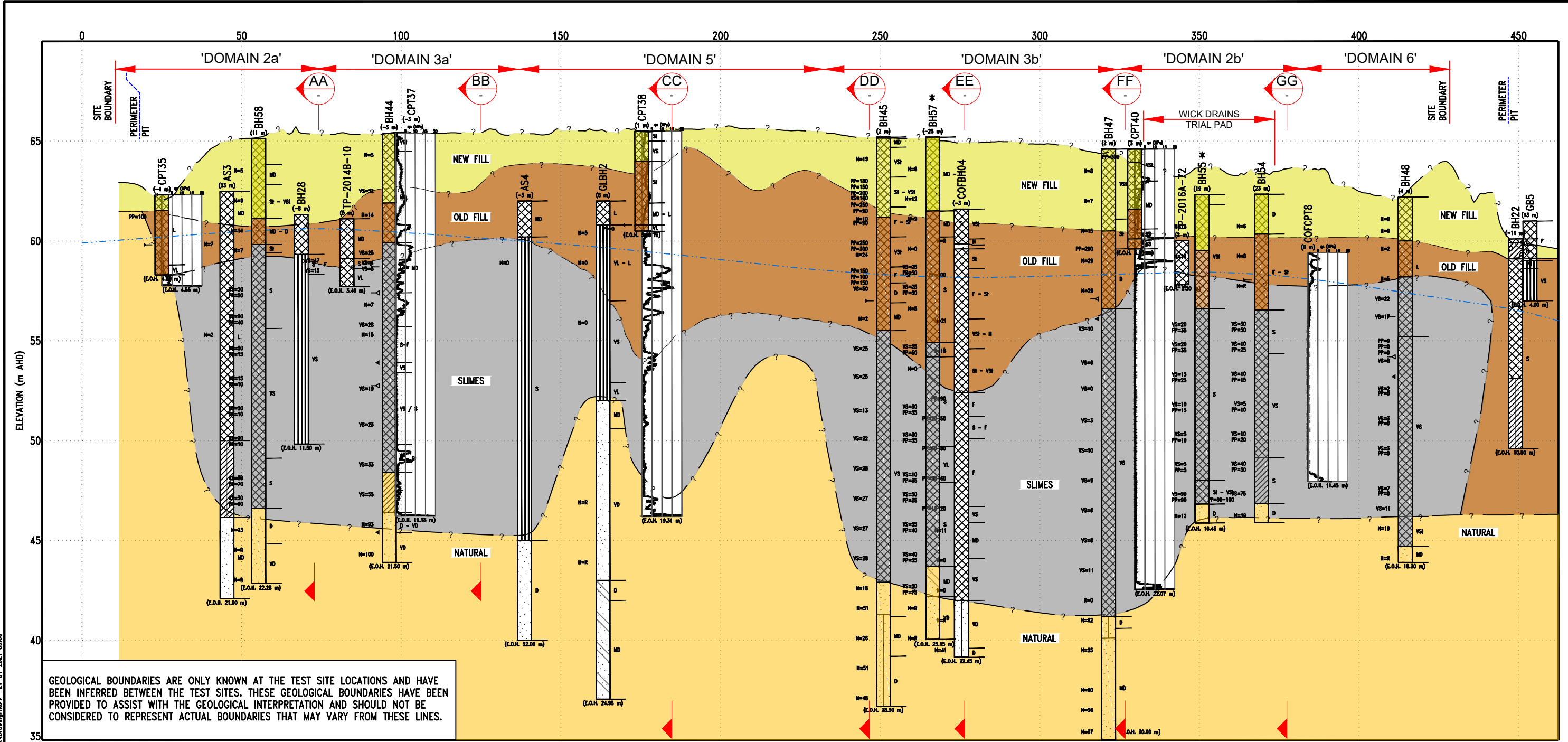


client:	HUNTINGDALE ESTATE NOMINEES PTY LTD	
project:	TALBOT AVENUE, OAKLEIGH SOUTH	
title:	SECTION VIII	
project no:	GEOTABTF092574AA	figure no: 13

APPENDIX A: 3D LEAPFROG MODEL

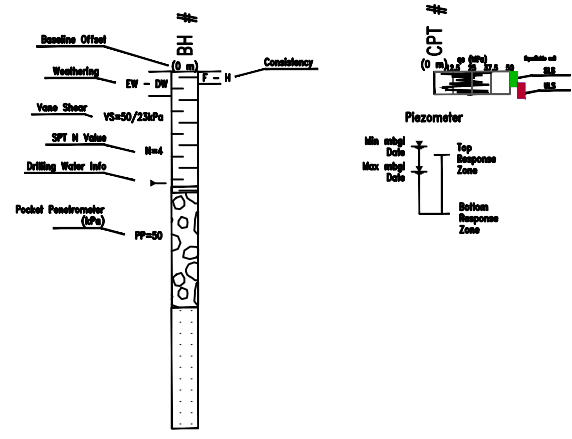


revision	description				drawn	approved	date	drawn	FK	 A TETRA TECH COMPANY	client:	HUNTINGDALE ESTATE NOMINEES PTY LTD	
								approved	IVP		project:	1221-1249 CENTRE ROAD & 22 TALBOT AVENUE	
								date	26.02.21			OAKLEIGH SOUTH, VICTORIA	
								scale	AS SHOWN		title:	Leapfrog Model	
								original size	A3		project no:	GEOTABTF09257AA	figure no:

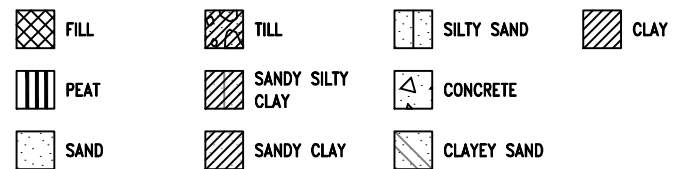


GEOLOGICAL BOUNDARIES ARE ONLY KNOWN AT THE TEST SITE LOCATIONS AND HAVE BEEN INFERRED BETWEEN THE TEST SITES. THESE GEOLOGICAL BOUNDARIES HAVE BEEN PROVIDED TO ASSIST WITH THE GEOLOGICAL INTERPRETATION AND SHOULD NOT BE CONSIDERED TO REPRESENT ACTUAL BOUNDARIES THAT MAY VARY FROM THESE LINES.

POST LEGEND



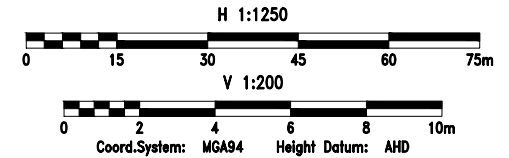
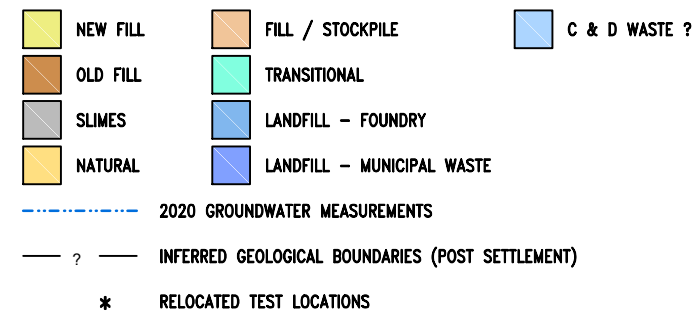
MATERIAL GRAPHIC



NOTES:

- ELEVATIONS ARE TO AUSTRALIAN HEIGHT DATUM, M AHD
- COORDINATES ARE TO ZONE 55, GDA94
- DUE TO THE BOREHOLE OFFSETS, THE LEAPFROG GEOLOGICAL BOUNDARIES SHOWN ON THE SECTIONS DO NOT COMPLETELY MATCH WITH THE BOREHOLE GEOLOGICAL UNITS AT SOME LOCATIONS.
- THE TOP OF NEW FILL IN ZONES 2, 3 & 5 AND FILL & STOCKPILES IN ZONE 1 IS INFERRED FROM THE APRIL 2019 SURVEY LEVELS PLUS THE SETTLEMENT THAT HAS OCCURRED UNDER THE PRE-LOAD FROM APRIL 2019 TO NOVEMBER 2020.
- THE TOTAL PRE-LOAD SETTLEMENT THAT HAS OCCURRED FROM MAY 2018 TO NOVEMBER 2020 HAS BEEN APPLIED TO THE TOP OF SLIMES SURFACE.
- THE TEST LOCATION MARKED WITH AN ASTERISK (*) HAVE BEEN SLIGHTLY RELOCATED ON SECTION DRAWINGS FOR CLARITY.

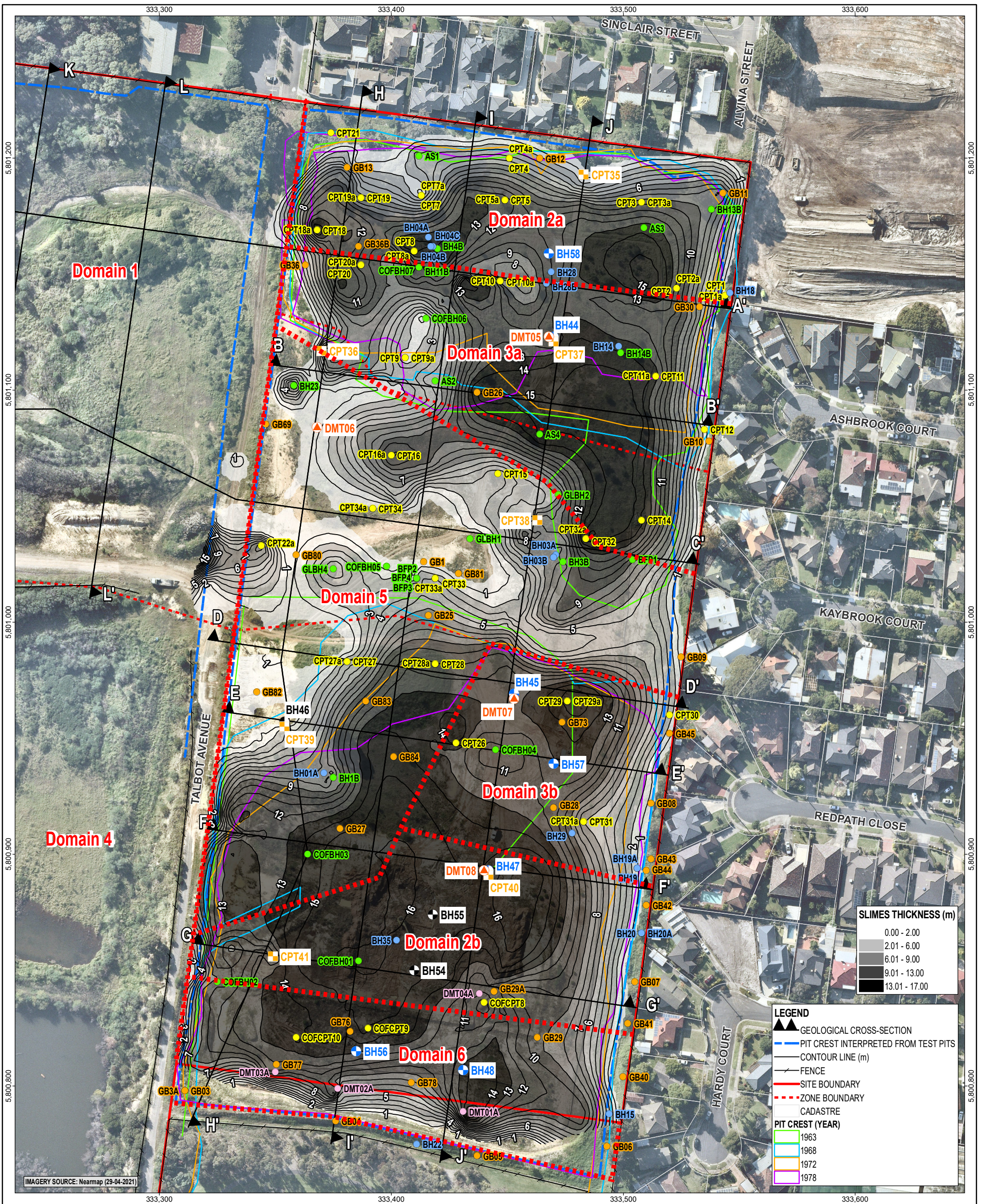
LEAPFROG LEGEND



drawn	M.J.B.
approved	I.V.P.
date	15-06-2021
scale	H 1:1250 V 1:200
original size	A3

client:	HUNTINGDALE ESTATE NOMINEES		
project:	TALBOT QUARRY 22 TALBOT AVENUE, OAKLEIGH SOUTH		
title:	SUBSURFACE SECTION JJ'		
project no:	754-GEOTABTF09257AA	fig no:	FIGURE A-02
rev:	2		

CPT_0_9_07_LIBRARY G49257AA.GLB Fence COF FENCE AXI 754-GEOTABTF09257AA 2020 COMBINED FILE.RPJ <<DrawingFile>> 21-01-2021 09:06

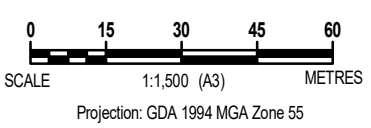


no.	description	drawn	approved	date
A	ORIGINAL ISSUE	JS	FK	27.07.21

drawn	JS
approved	FK
date	27.07.2021
scale	1:1,500
original size	A3

STAGE 1 INVESTIGATION LOCATION (2019-2020) ● BOREHOLE WITH VWP ● CONE PENETRATION TEST ● BOREHOLE ▲ FLAT DILATOMETER TEST		HISTORICAL INVESTIGATION LOCATION ● BOREHOLE ● GROUNDWATER BORE ● CONE PENETRATION TEST ● GAS BORE ● FLAT DILATOMETER TEST	
■■■■■ NEW DOMAIN BOUNDARIES		client: HUNTINGDALE ESTATE NOMINEES PTY LTD	
		project: GEOTECHNICAL SITE INVESTIGATION 1221-1249 CENTRE ROAD & 22 TALBOT AVENUE OAKLEIGH SOUTH, VICTORIA	
title: SLIMES THICKNESS CONTOUR PLAN (Domains 2a, 2b, 3a, 3b, 5, 6)		project no: GEOTABTF09257AA-EC figure no: FIGURE A-03 rev: A	

M:\D\Templates\Reference\02CF44_EC_GIS\019_v0_2



APPENDIX C: TREE REMOVAL PLAN

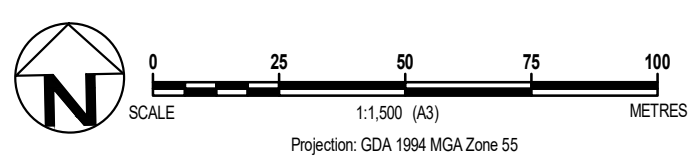


LEGEND

- Site boundary
- - - Domain boundary
- Small group of trees to be removed
- Tree to be removed

no.	description	drawn	approved	date
A	ORIGINAL ISSUE	AM	FK	18.11.21

IMAGERY SOURCE: Nearmap (29-04-2021)



drawn	AM
approved	FK
date	18.11.2021
scale	1:1,500
original size	A3



client:	HUNTINGDALE ESTATE NOMINEES PTY LTD		
project:	GEOTECHNICAL SITE INVESTIGATION 1221-1249 CENTRE ROAD & 22 TALBOT AVENUE OAKLEIGH SOUTH, VICTORIA		
title:	TREE REMOVAL PLAN (DOMAINS 2A, 3A, 3B, & 5)		
project no:	GEOTABTF09257AA-EH	figure no:	FIGURE C-01
rev:	A		