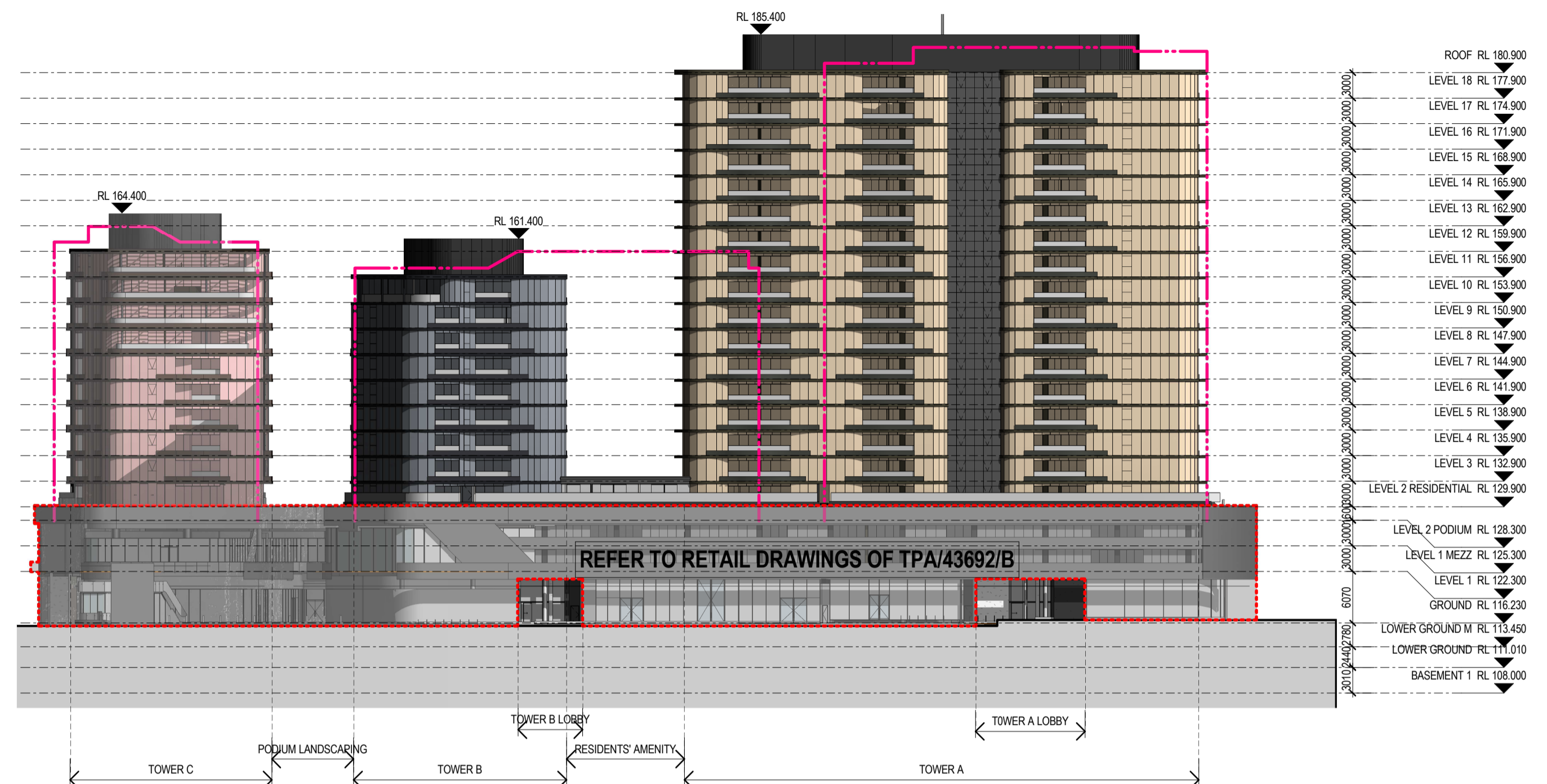
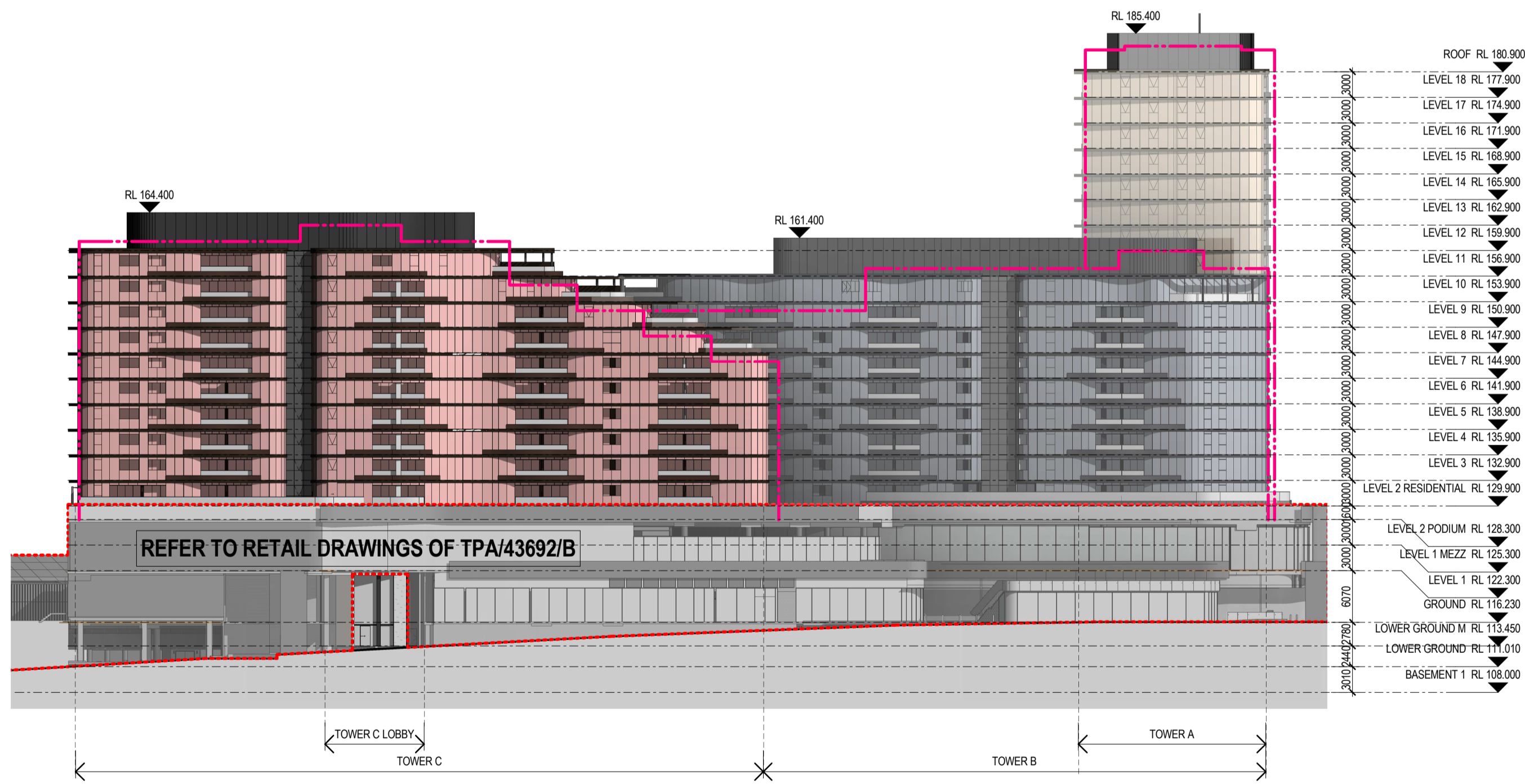


EAST



SOUTH



WEST

LEGEND	
	PREVIOUSLY APPROVED RESIDENTIAL TOWER OUTLINE: PERMIT NO. TPA/43692/B
	EXTENT OF APPLICATION
	RETAIL

MATERIALS SCHEDULE

AFX1 APPLIED FINISH - CHARCOAL	MCA2 METAL CLADDING A2 - TOWER A
GTA1 VISION GLASS A1 - TOWER A	MCB1 METAL CLADDING B1 - TOWER B
GTA2 SPANDREL GLASS A2 - TOWER A	MCB2 METAL CLADDING B2 - TOWER B
GTB1 VISION GLASS B1 - TOWER B	MCC1 METAL CLADDING C1 - TOWER C
GTB2 SPANDREL GLASS B2 - TOWER B	MCC2 METAL CLADDING C2 - TOWER C
GTC1 VISION GLASS C1 - TOWER C	MCA1 METAL FINISH A1 - TOWER A
GTC2 SPANDREL GLASS C2 - TOWER C	MFB1 METAL FINISH B1 - TOWER B
GTX1 CLEAR VISION GLASS	MFC1 METAL FINISH C1 - TOWER C
GTX2 CHARCOAL VISION GLASS	MFX1 METAL FINISH - CHARCOAL
GTX3 CHARCOAL SPANDREL GLASS	STX1 NATURAL STONE 1 - LOBBY ENTRIES
GTX4 GREY VISION GLASS	STX2 NATURAL STONE 2 - LOBBY ENTRIES
MCA1 METAL CLADDING A1 - TOWER A	

PERMIT ISSUE

Revisions / 27.09.17 ISSUED FOR TOWN PLANNING AMENDMENT MD

Project / **The Glen - Residential Towers**
227 - 235 Springvale Rd
Glen Waverley

Drawing / **SITE ELEVATIONS**

Project No / **217059** Date / **27/09/17**

Author / **JR**

Scale: @ A1 / **1 : 500**

Drawing No. / **TP02.01 -**

rothelowman

Brisbane, Melbourne, Sydney
www.rothelowman.com.au



SPRINGVALE ROAD

REFER TO RETAIL DRAWINGS OF APPLICATION TPA/43692/B FOR DETAILS BEYOND RED DOTTED LINE

LEGEND	
[Yellow Box]	1 BEDROOM
[Orange Box]	2 BEDROOM
[Red Box]	3 BEDROOM
[Light Blue Box]	LOBBY
[Dark Blue Box]	RESIDENTIAL CARPARK
[Light Green Box]	COMMUNAL SPACE
[Grey Box]	RETAIL
[Line with 'A']	AWNING
[Red Dotted Line]	PREVIOUSLY APPROVED RESIDENTIAL TOWER OUTLINE PERMIT NO. TPA/43692/B
[Red Dashed Line]	EXTENT OF APPLICATION

MATERIALS SCHEDULE

AFX1	APPLIED FINISH - CHARCOAL	MCA2	METAL CLADDING A2 - TOWER A
GTA1	VISION GLASS A1 - TOWER A	MCB1	METAL CLADDING B1 - TOWER B
GTB2	VISION GLASS B2 - TOWER B	MCC1	METAL CLADDING C1 - TOWER C
GTC1	VISION GLASS C1 - TOWER C	MCC2	METAL CLADDING C2 - TOWER C
GTX1	CLEAR VISION GLASS	MCA1	METAL FINISH A1 - TOWER A
GTX2	CHARCOAL VISION GLASS	MFB1	METAL FINISH B1 - TOWER B
GTX3	CHARCOAL SPANDREL GLASS	MFC1	METAL FINISH C1 - TOWER C
GTX4	GREY VISION GLASS	MFX1	METAL FINISH - CHARCOAL
MCA1	METAL CLADDING A1 - TOWER A	STX1	NATURAL STONE 1 - LOBBY ENTRIES
		STX2	NATURAL STONE 2 - LOBBY ENTRIES

PERMIT ISSUE

Revisions / 27.09.17 ISSUED FOR TOWN PLANNING AMENDMENT MD

Project / **The Glen - Residential Towers**
227 - 235 Springvale Rd
Glen Waverley

Drawing / **BUILDING A NORTH ELEVATION**

Project No / **217059** Date / **27/09/17**

Author / **AF**

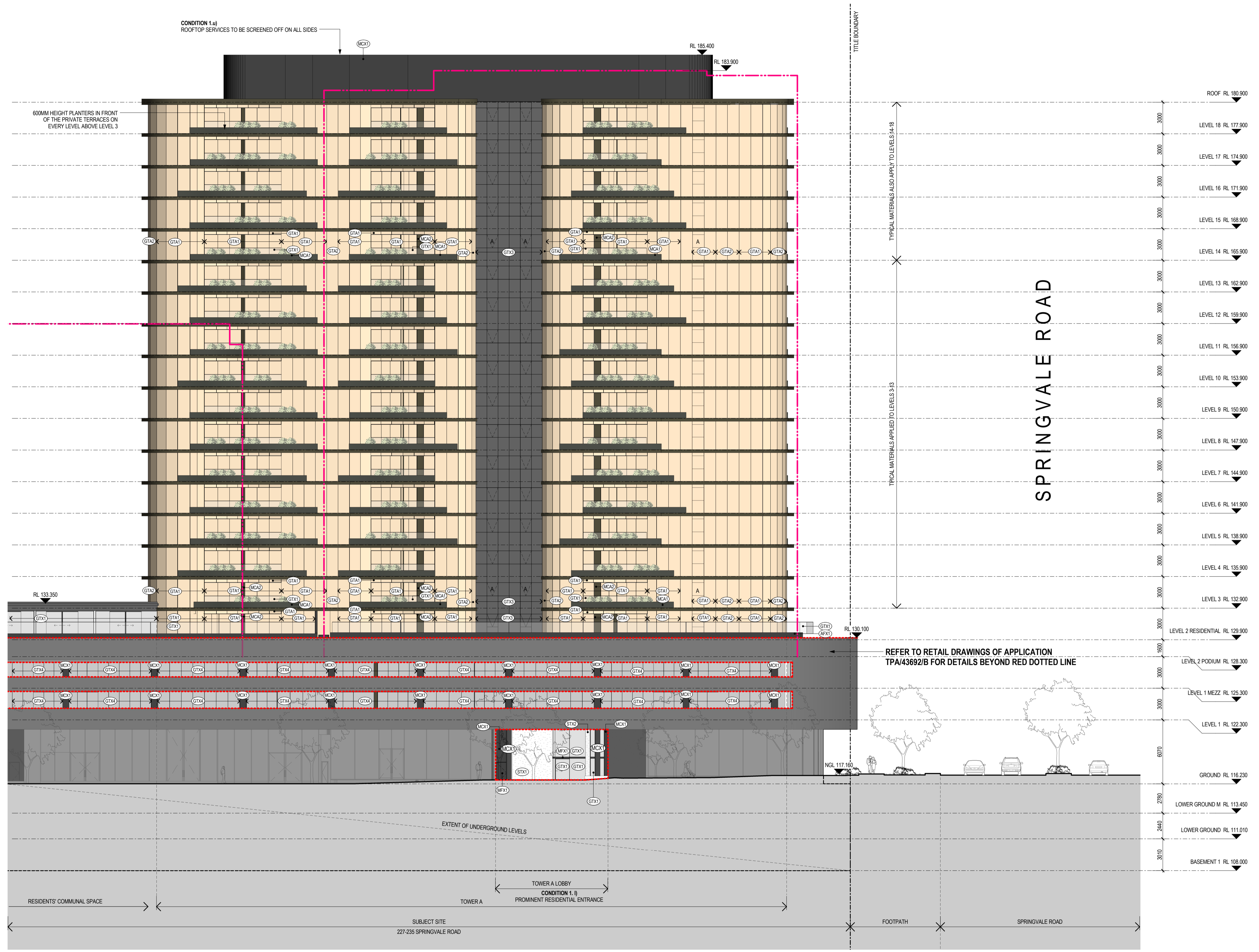
Scale: @ A1 / **1 : 200**

Drawing No. / **TP02.02 -**

Disclaimer: Rothelowman Property Pty. Ltd. retains all common law, statutory law and other rights including copyright and intellectual property rights in respect of this document. The recipient indemnifies Rothelowman Property Pty. Ltd. against all claims resulting from use of this document for any purpose other than its intended use, unauthorized changes or reuse of the document on other projects without the permission of Rothelowman Property Pty. Ltd. Under no circumstance shall transfer of this document be deemed a sale or constitute a transfer of the license to use this document. ABN 76 005 783 997

rothelowman

Brisbane, Melbourne, Sydney
www.rothelowman.com.au



MATERIALS SCHEDULE

- | | | | |
|------|-----------------------------|------|---------------------------------|
| AFX1 | APPLIED FINISH - CHARCOAL | MCA2 | METAL CLADDING A2 - TOWER A |
| GTA1 | VISION GLASS A1 - TOWER A | MCB1 | METAL CLADDING B1 - TOWER B |
| GTB2 | SPANDREL GLASS A2 - TOWER A | MCB2 | METAL CLADDING B2 - TOWER B |
| GTB1 | VISION GLASS B1 - TOWER B | MCC1 | METAL CLADDING C1 - TOWER C |
| GTB2 | SPANDREL GLASS B2 - TOWER B | MCC2 | METAL CLADDING C2 - TOWER C |
| GTC1 | VISION GLASS C1 - TOWER C | MCA1 | METAL CLADDING A1 - TOWER A |
| GTC2 | SPANDREL GLASS C2 - TOWER C | MFA1 | METAL FINISH A1 - TOWER A |
| GTX1 | CLEAR VISION GLASS | MFB1 | METAL FINISH B1 - TOWER B |
| GTX2 | CHARCOAL VISION GLASS | MFC1 | METAL FINISH C1 - TOWER C |
| GTX3 | CHARCOAL SPANDREL GLASS | MF1 | METAL FINISH - CHARCOAL |
| GTX4 | GREY VISION GLASS | STX1 | NATURAL STONE 1 - LOBBY ENTRIES |
| MCA1 | METAL CLADDING A1 - TOWER A | STX2 | NATURAL STONE 2 - LOBBY ENTRIES |

PERMIT ISSUE

Revisions / 27.09.17 ISSUED FOR TOWN PLANNING AMENDMENT MD

Project / **The Glen - Residential Towers**
227 - 235 Springvale Rd
Glen Waverley

Drawing / **BUILDING A SOUTH ELEVATION**

Project No / **217059** Date / **27/09/17**

Author / **AF**

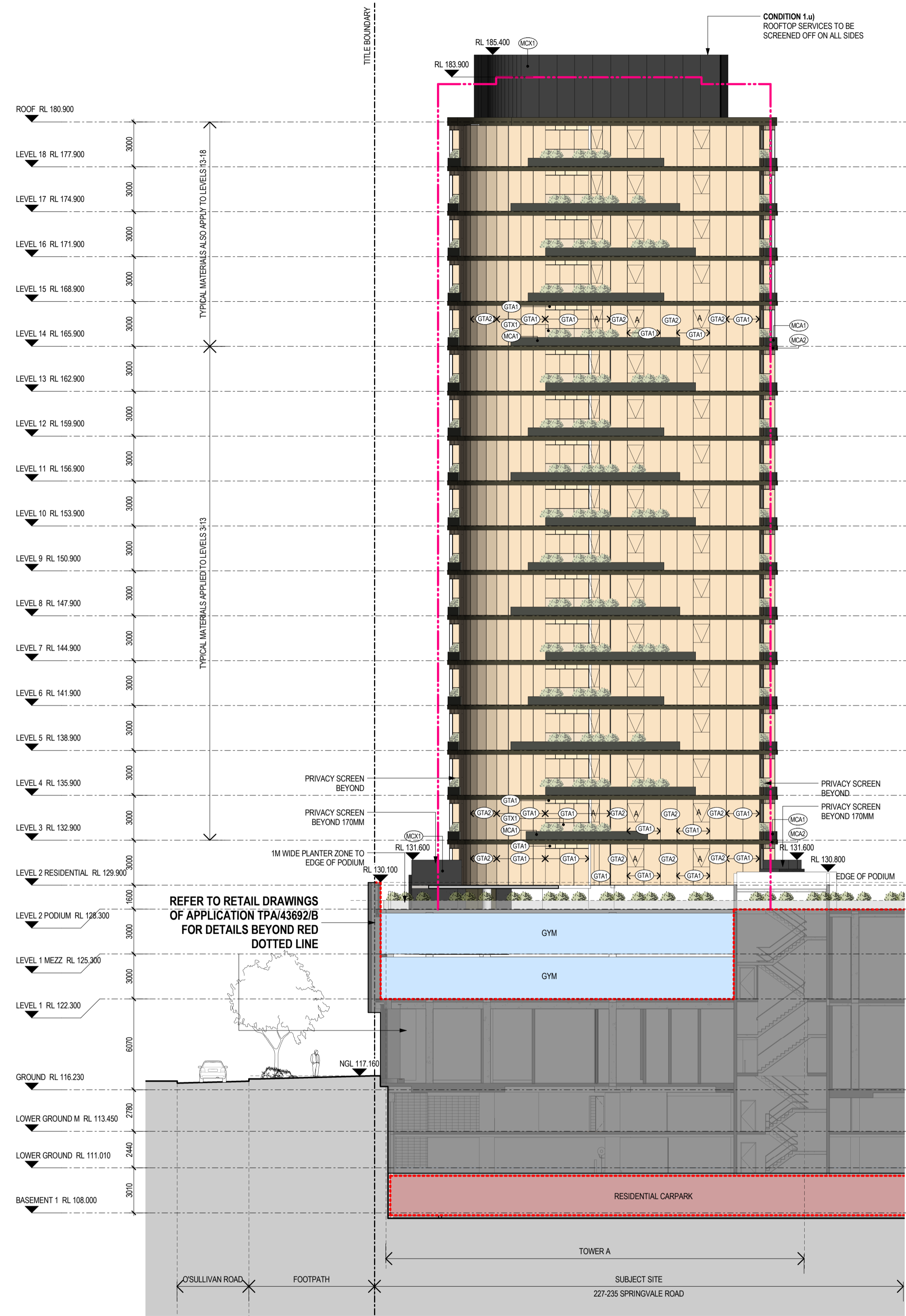
Scale: @ A1 / **1 : 200**

Drawing No. / **TP02.03 -**

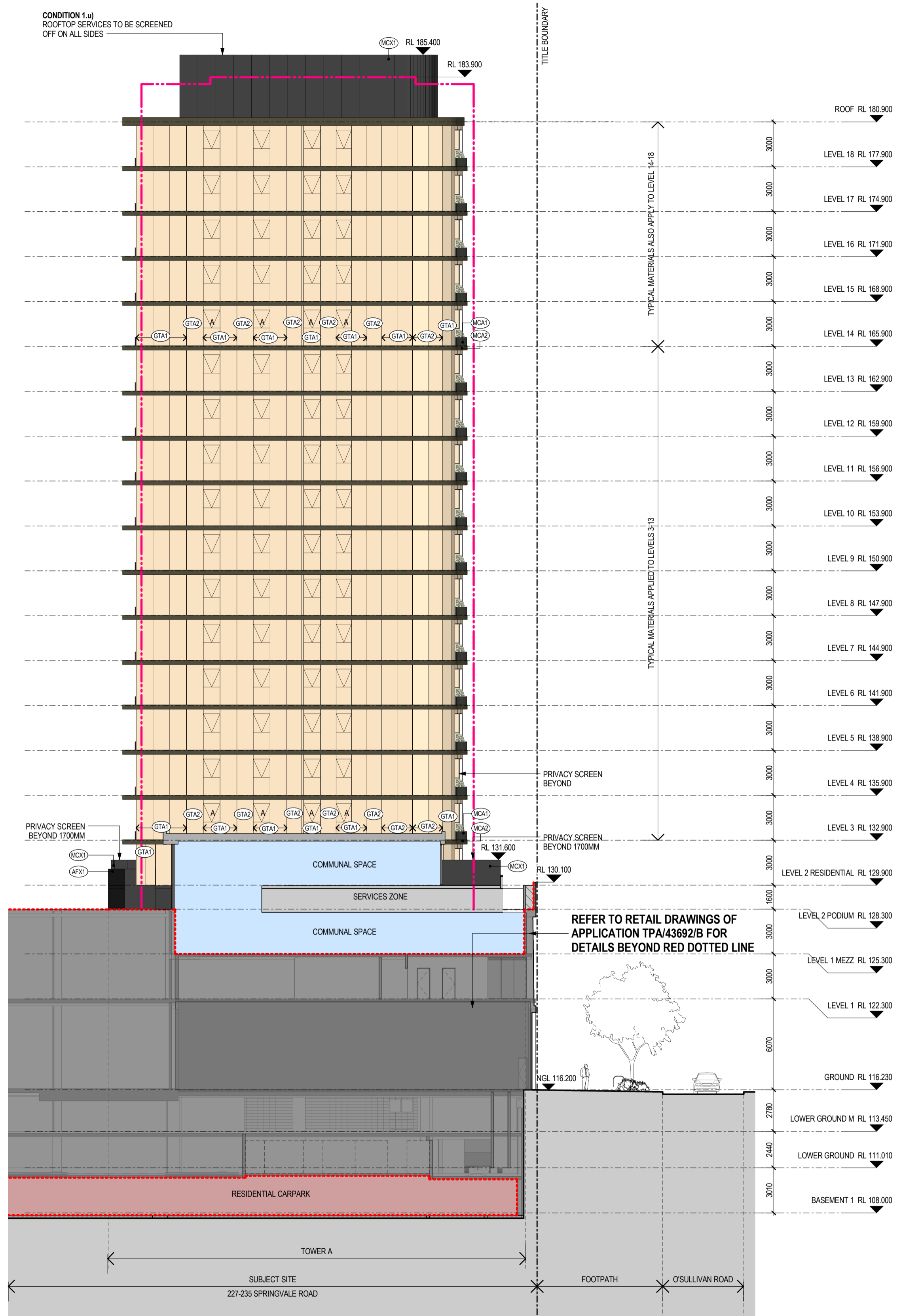
Disclaimer: Rothe Lowman Property Pty. Ltd. retains all common law, statutory law and other rights including copyright and intellectual property rights in respect of this document. The recipient indemnifies Rothe Lowman Property Pty. Ltd. against all claims resulting from use of this document for any purpose other than its intended use, unauthorized changes or reuse of the document on other projects without the permission of Rothe Lowman Property Pty. Ltd. Under no circumstance shall transfer of this document be deemed a sale or constitute a transfer of the license to use this document. ABN 76 005 783 997

rothelowman

Brisbane, Melbourne, Sydney
www.rothelowman.com.au



BUILDING A EAST ELEVATION



BUILDING A WEST ELEVATION

MATERIALS SCHEDULE

AFX1	APPLIED FINISH - CHARCOAL	MCA2	METAL CLADDING A2 - TOWER A
GTA1	VISION GLASS A1 - TOWER A	MCB1	METAL CLADDING B1 - TOWER B
GTA2	SPANDREL GLASS A2 - TOWER A	MCB2	METAL CLADDING B2 - TOWER B
GTB1	VISION GLASS B1 - TOWER B	MCC1	METAL CLADDING C1 - TOWER C
GTB2	SPANDREL GLASS B2 - TOWER B	MCC2	METAL CLADDING C2 - TOWER C
GTC1	VISION GLASS C1 - TOWER C	MCA1	METAL CLADDING - CHARCOAL
GTC2	SPANDREL GLASS C2 - TOWER C	MFA1	METAL FINISH A1 - TOWER A
GTX1	CLEAR VISION GLASS	MFB1	METAL FINISH B1 - TOWER B
GTX2	CHARCOAL VISION GLASS	MFC1	METAL FINISH C1 - TOWER C
GTX3	CHARCOAL SPANDREL GLASS	MFX1	METAL FINISH - CHARCOAL
GTX4	GREY VISION GLASS	STX1	NATURAL STONE 1 - LOBBY ENTRIES
MCA1	METAL CLADDING A1 - TOWER A	STX2	NATURAL STONE 2 - LOBBY ENTRIES

PERMIT ISSUE

Revisions / 27.09.17 ISSUED FOR TOWN PLANNING AMENDMENT MD

Project / **The Glen - Residential Towers**
227 - 235 Springvale Rd
Glen Waverley

Drawing / **BUILDING A EAST & WEST ELEVATIONS**

Project No / **217059** Date / **27/09/17**

Author / **AF**

Scale: @ A1 / **1 : 200**

Drawing No. / **TP02.04 -**

rothelowman

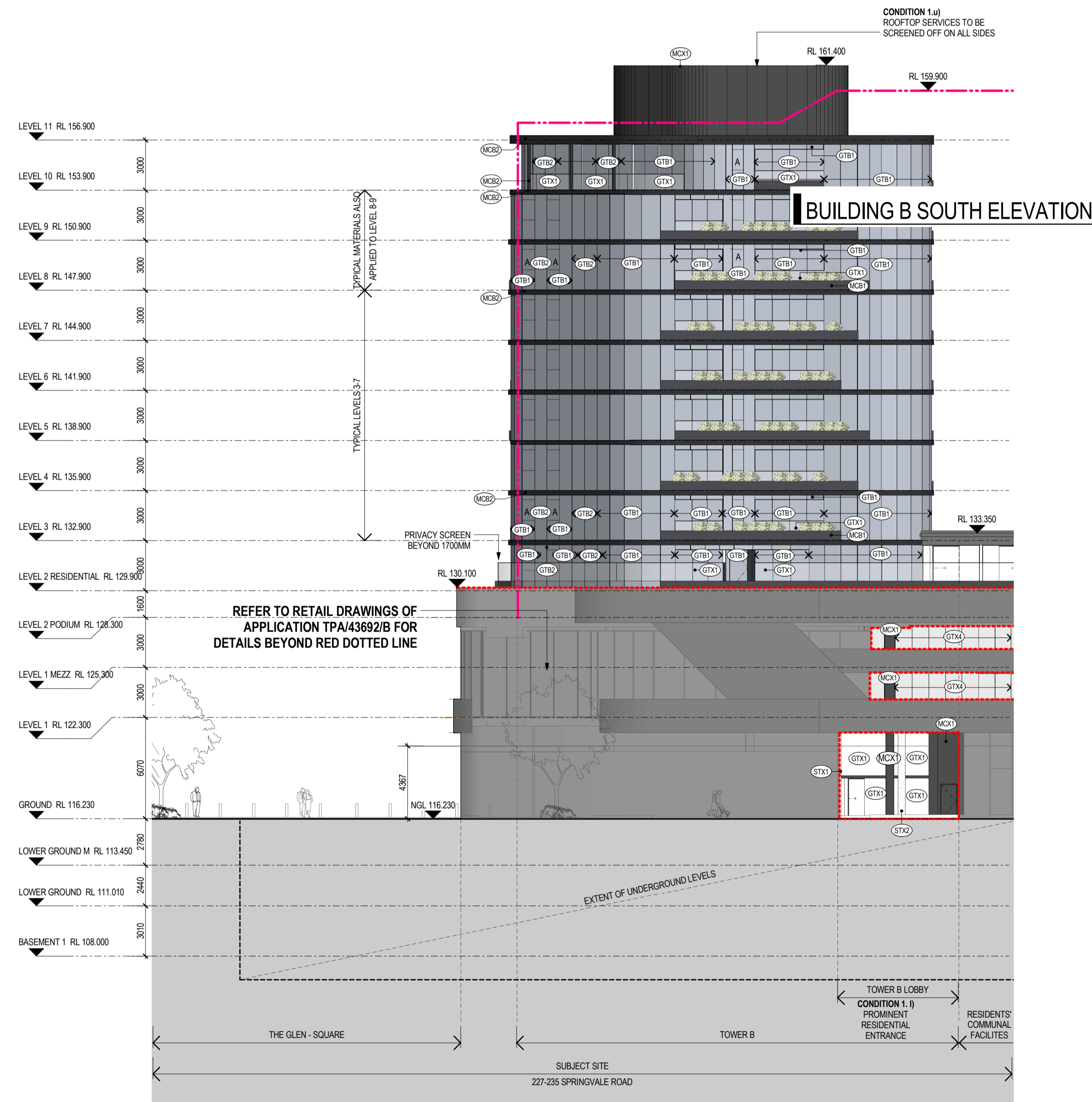
Brisbane, Melbourne, Sydney
www.rothelowman.com.au

26/09/2017 8:59:35 PM

LEGEND

- 1 BEDROOM
- 2 BEDROOM
- 3 BEDROOM
- LOBBY
- RESIDENTIAL CARPARK
- COMMUNAL SPACE
- RETAIL
- A AWNING
- PREVIOUSLY APPROVED RESIDENTIAL TOWER OUTLINE PERMIT NO. TPA43692/B
- EXTENT OF APPLICATION

Disclaimer: Rothelowman Property Pty. Ltd. retains all common law, statutory law and other rights including copyright and intellectual property rights in respect of this document. The recipient indemnifies Rothelowman Property Pty. Ltd. against all claims resulting from use of this document for any purpose other than its intended use, unauthorised changes or reuse of the document on other projects without the permission of Rothelowman Property Pty. Ltd. Under no circumstance shall transfer of this document be deemed a sale or constitute a transfer of the license to use this document. ABN 76 005 783 997



MATERIALS SCHEDULE

AFX1	APPLIED FINISH - CHARCOAL	MCA2	METAL CLADDING A2 - TOWER A
GTA1	VISION GLASS A1 - TOWER A	MCB1	METAL CLADDING B1 - TOWER B
GTA2	SPANDREL GLASS A2 - TOWER A	MCB2	METAL CLADDING B2 - TOWER B
GTB1	VISION GLASS B1 - TOWER B	MCC1	METAL CLADDING C1 - TOWER C
GTB2	SPANDREL GLASS B2 - TOWER B	MCC2	METAL CLADDING C2 - TOWER C
GTC1	VISION GLASS C1 - TOWER C	MCX1	METAL CLADDING - CHARCOAL
GTC2	SPANDREL GLASS C2 - TOWER C	MFA1	METAL FINISH A1 - TOWER A
GTX1	CLEAR VISION GLASS	MFB1	METAL FINISH B1 - TOWER B
GTX2	CHARCOAL VISION GLASS	MFC1	METAL FINISH C1 - TOWER C
GTX3	CHARCOAL SPANDREL GLASS	MFX1	METAL FINISH - CHARCOAL
GTX4	GREY VISION GLASS	STX1	NATURAL STONE 1 - LOBBY ENTRIES
MCA1	METAL CLADDING A1 - TOWER A	STX2	NATURAL STONE 2 - LOBBY ENTRIES

PERMIT ISSUE

Revisions / 27.09.17 ISSUED FOR TOWN PLANNING AMENDMENT MD

Project / **The Glen - Residential Towers**
227 - 235 Springvale Rd
Glen Waverley

Drawing / **BUILDING B NORTH & SOUTH ELEVATIONS**

Project No / **217059** Date / **27/09/17**

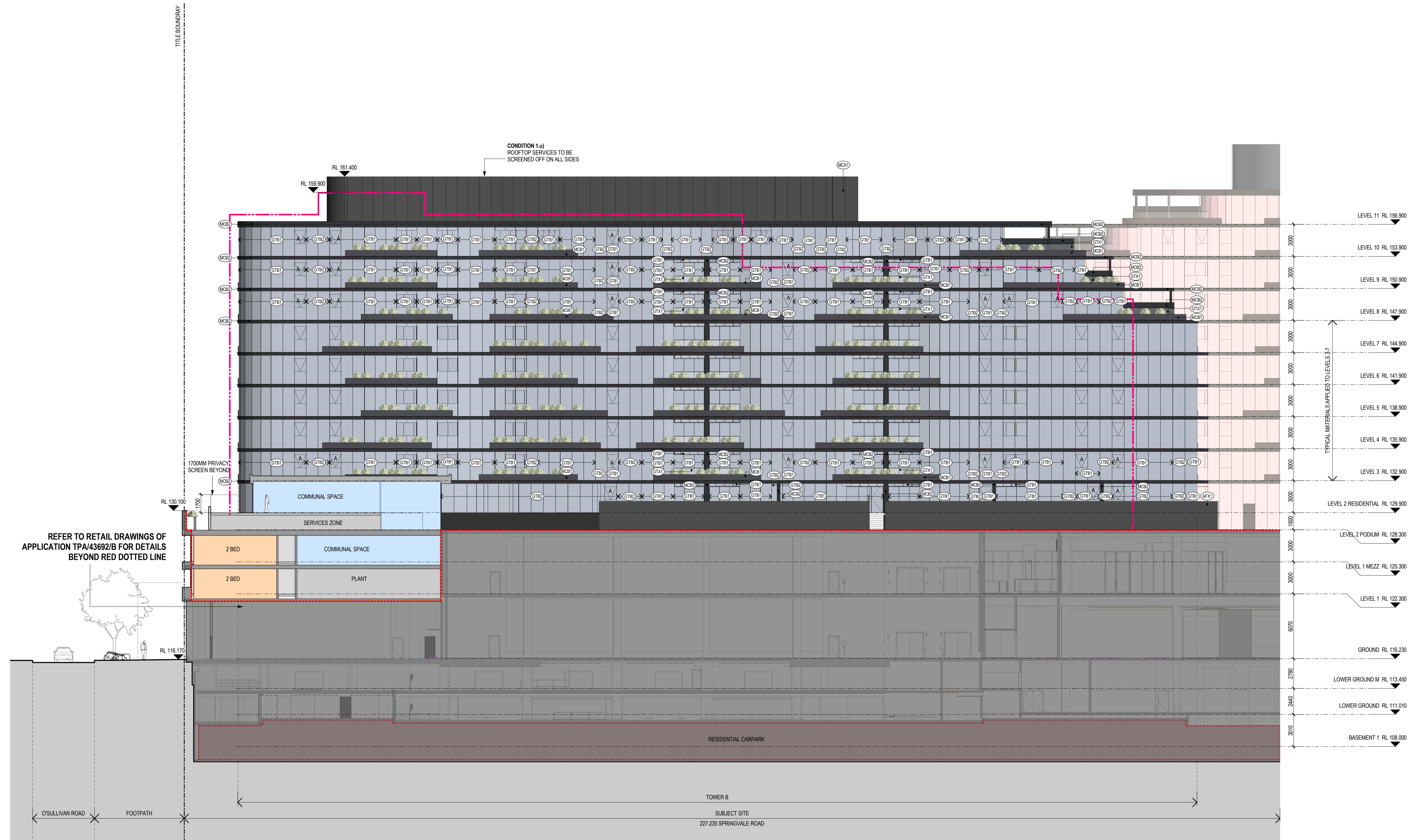
Author / **AF**

Scale: @ A1 / **1 : 200**

Drawing No. / **TP02.05 -**

rothelawman

Brisbane, Melbourne, Sydney
www.rothelawman.com.au



MATERIALS SCHEDULE

AFX1	APPLIED FINISH - CHARCOAL	MCX1	METAL CLADDING - CHARCOAL
GTA1	VISION GLASS A1 - TOWER A	MFA1	METAL FINISH A1 - TOWER A
GTB1	VISION GLASS B1 - TOWER B	MFB1	METAL FINISH B1 - TOWER B
GTC1	VISION GLASS C1 - TOWER C	MFC1	METAL FINISH C1 - TOWER C
GTA2	SPANDREL GLASS A2 - TOWER A	STX1	NATURAL STONE 1 - LOBBY ENTRIES
GTB2	SPANDREL GLASS B2 - TOWER B	STX2	NATURAL STONE 2 - LOBBY ENTRIES
GTC2	SPANDREL GLASS C2 - TOWER C		
GTX1	CLEAR VISION GLASS		
GTX2	CHARCOAL VISION GLASS		
GTX3	CHARCOAL SPANDREL GLASS		
GTX4	GREY VISION GLASS		
MCA1	METAL CLADDING A1 - TOWER A		
MCB1	METAL CLADDING B1 - TOWER B		
MCC1	METAL CLADDING C1 - TOWER C		
MCA2	METAL CLADDING A2 - TOWER A		
MCB2	METAL CLADDING B2 - TOWER B		
MCC2	METAL CLADDING C2 - TOWER C		

PERMIT ISSUE

Revisions / 27.09.17 ISSUED FOR TOWN PLANNING AMENDMENT MD

Project / **The Glen - Residential Towers**
227 - 235 Springvale Rd
Glen Waverley

Drawing / **BUILDING B EAST ELEVATION**

Project No / **217059** Date / **27/09/17**

Author / **AF**

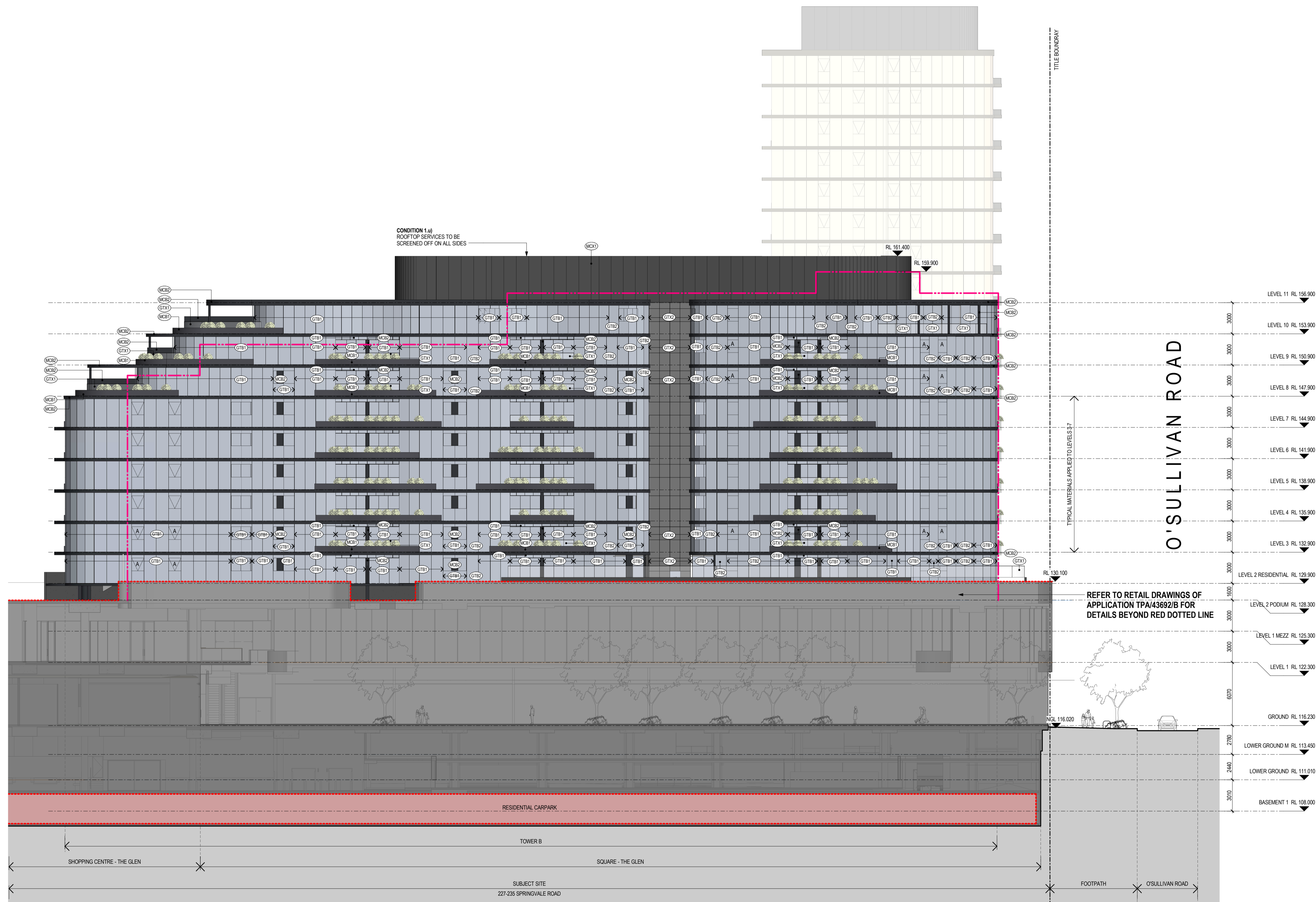
Scale: @ A1 / **1 : 200**

Drawing No. / **TP02.06 -**

rothelowman

Brisbane, Melbourne, Sydney
www.rothelowman.com.au

26/09/2017 9:00:11 PM



MATERIALS SCHEDULE

AFX1	APPLIED FINISH - CHARCOAL	MCA2	METAL CLADDING A2 - TOWER A
GTA1	VISION GLASS A1 - TOWER A	MCB1	METAL CLADDING B1 - TOWER B
GA2	SPANDREL GLASS A2 - TOWER A	MCB2	METAL CLADDING B2 - TOWER B
GTB1	VISION GLASS B1 - TOWER B	MCC1	METAL CLADDING C1 - TOWER C
GTB2	SPANDREL GLASS B2 - TOWER B	MCC2	METAL CLADDING C2 - TOWER C
GTC1	VISION GLASS C1 - TOWER C	MCA1	METAL FINISH A1 - TOWER A
GTC2	SPANDREL GLASS C2 - TOWER C	MFB1	METAL FINISH B1 - TOWER B
GTX1	CLEAR VISION GLASS	MFC1	METAL FINISH C1 - TOWER C
GTX2	CHARCOAL VISION GLASS	MFX1	METAL FINISH - CHARCOAL
GTX3	CHARCOAL SPANDREL GLASS	STX1	NATURAL STONE 1 - LOBBY ENTRIES
GTX4	GREY VISION GLASS	STX2	NATURAL STONE 2 - LOBBY ENTRIES
MCA1	METAL CLADDING A1 - TOWER A		

PERMIT ISSUE

Revisions / 27.09.17 ISSUED FOR TOWN PLANNING AMENDMENT MD

Project / **The Glen - Residential Towers**
227 - 235 Springvale Rd
Glen Waverley

Drawing / **BUILDING B WEST ELEVATION**

Project No / **217059** Date / **27/09/17**

Author / **AF**

Scale: @ A1 / **1 : 200**

Drawing No. / **TP02.07 -**

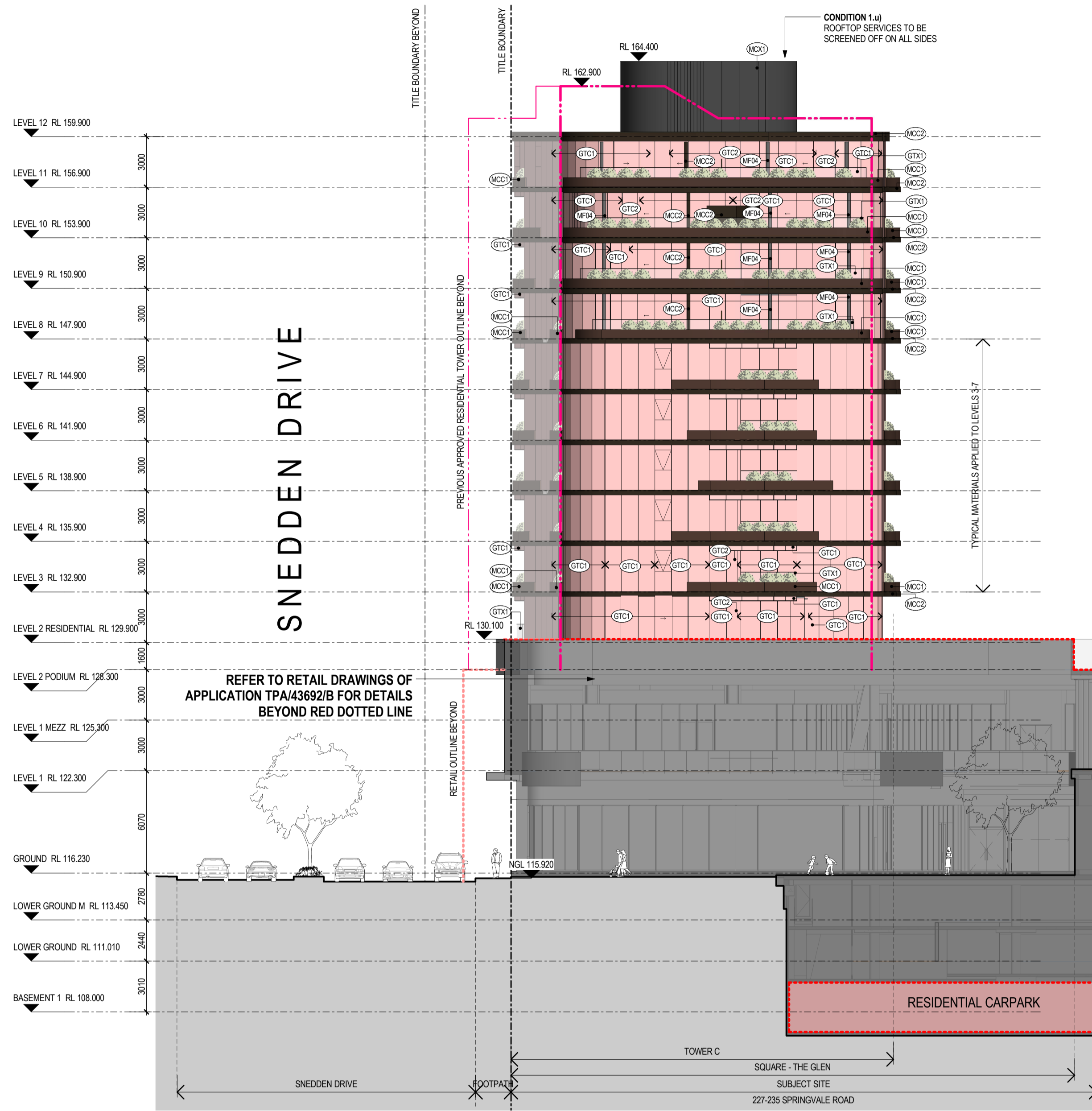
Disclaimer: Rothe Lowman Property Pty. Ltd. retains all common law, statutory law and other rights including copyright and intellectual property rights in respect of this document. The recipient indemnifies Rothe Lowman Property Pty. Ltd. against all claims resulting from use of this document for any purpose other than its intended use, unauthorized changes or reuse of the document on other projects without the permission of Rothe Lowman Property Pty. Ltd. Under no circumstance shall transfer of this document be deemed a sale or constitute a transfer of the license to use this document. ABN 76 005 783 997

LEGEND

	1 BEDROOM
	2 BEDROOM
	3 BEDROOM
	LOBBY
	RESIDENTIAL CARPARK
	COMMUNAL SPACE
	RETAIL
	A AWNING
	PREVIOUSLY APPROVED RESIDENTIAL TOWER OUTLINE PERMIT NO. TPA/43692/B
	EXTENT OF APPLICATION

rothelowman

Brisbane, Melbourne, Sydney
www.rothelowman.com.au



BUILDING C SOUTH ELEVATION



BUILDING C NORTH ELEVATION

MATERIALS SCHEDULE

AFX1 APPLIED FINISH - CHARCOAL	MCA2 METAL CLADDING A2 - TOWER A
GTA1 VISION GLASS A1 - TOWER A	MCB1 METAL CLADDING B1 - TOWER B
GTA2 SPANDREL GLASS A2 - TOWER A	MCB2 METAL CLADDING B2 - TOWER B
GTB1 VISION GLASS B1 - TOWER B	MCC1 METAL CLADDING C1 - TOWER C
GTB2 SPANDREL GLASS B2 - TOWER B	MCC2 METAL CLADDING C2 - TOWER C
GTC1 VISION GLASS C1 - TOWER C	MCA1 METAL CLADDING A1 - TOWER A
GTC2 SPANDREL GLASS C2 - TOWER C	MCB1 METAL CLADDING B1 - TOWER B
GTX1 CLEAR VISION GLASS	MFB1 METAL FINISH B1 - TOWER B
GTX2 CHARCOAL VISION GLASS	MFC1 METAL FINISH C1 - TOWER C
GTX3 CHARCOAL SPANDREL GLASS	MFX1 METAL FINISH - CHARCOAL
GTX4 GREY VISION GLASS	STX1 NATURAL STONE 1 - LOBBY ENTRIES
MCA1 METAL CLADDING A1 - TOWER A	STX2 NATURAL STONE 2 - LOBBY ENTRIES

PERMIT ISSUE

Revisions / 27.09.17 ISSUED FOR TOWN PLANNING AMENDMENT MD

Project / **The Glen - Residential Towers**
227 - 235 Springvale Rd
Glen Waverley

Drawing / **BUILDING C NORTH & SOUTH ELEVATIONS**

Project No / **217059** Date / **27/09/17**

Author / **AF**

Scale: @ A1 / **1 : 200**

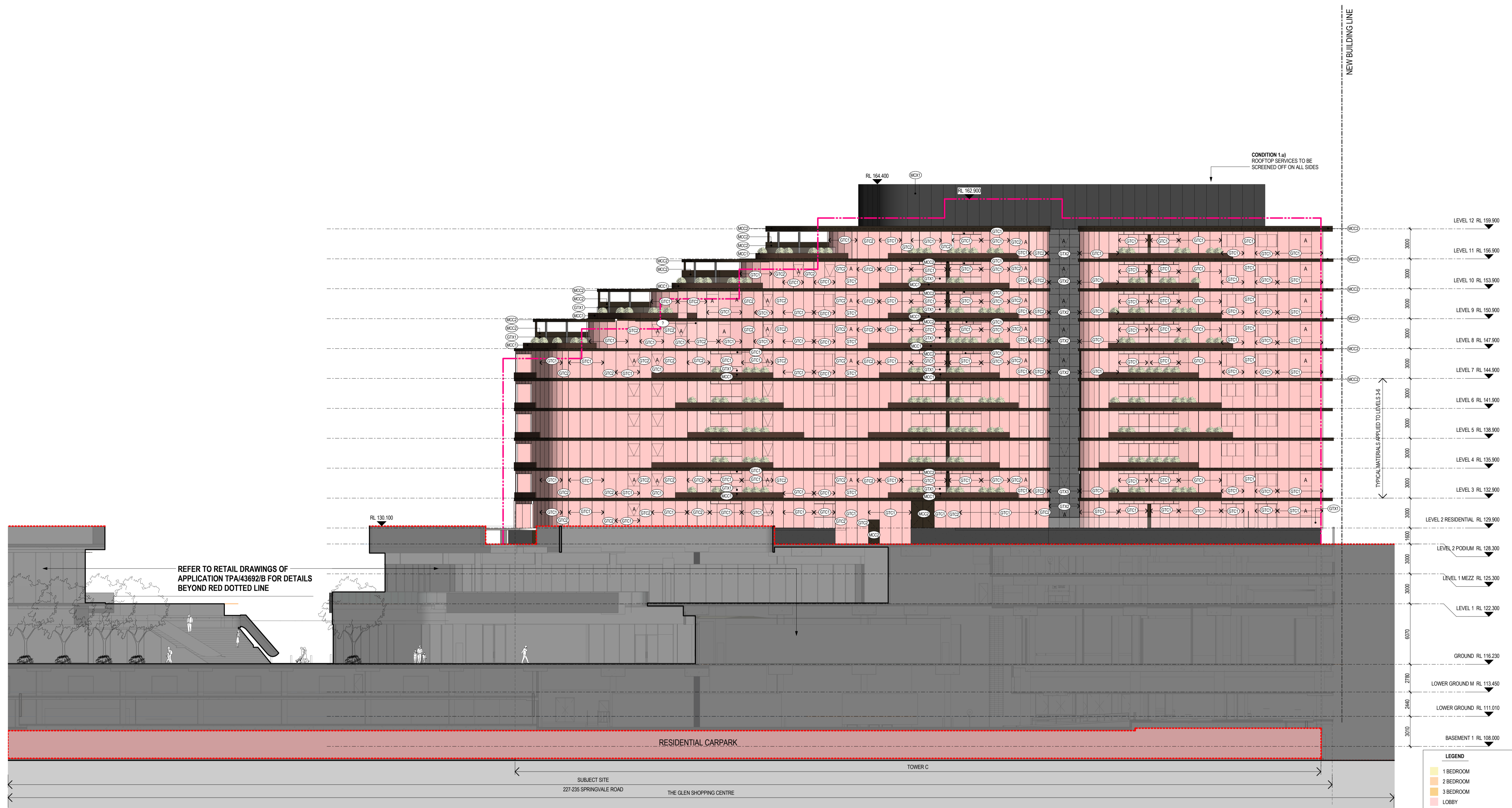
Drawing No. / **TP02.08 -**

rothelowman

Brisbane, Melbourne, Sydney
www.rothelowman.com.au

LEGEND

1 BEDROOM
2 BEDROOM
3 BEDROOM
LOBBY
RESIDENTIAL CARPARK
COMMUNAL SPACE
RETAIL
A AWNING
PREVIOUSLY APPROVED RESIDENTIAL TOWER OUTLINE - PERMIT NO. TPA/43692/B
EXTENT OF APPLICATION



MATERIALS SCHEDULE

AFX1	APPLIED FINISH - CHARCOAL	MCA2	METAL CLADDING A2 - TOWER A
GTA1	VISION GLASS A1 - TOWER A	MCB1	METAL CLADDING B1 - TOWER B
GTA2	SPANDREL GLASS A2 - TOWER A	MCB2	METAL CLADDING B2 - TOWER B
GTB1	VISION GLASS B1 - TOWER B	MCC1	METAL CLADDING C1 - TOWER C
GTB2	SPANDREL GLASS B2 - TOWER B	MCC2	METAL CLADDING C2 - TOWER C
GTC1	VISION GLASS C1 - TOWER C	MCA1	METAL CLADDING A1 - TOWER A
GTC2	SPANDREL GLASS C2 - TOWER C	MFA1	METAL FINISH A1 - TOWER A
GTX1	CLEAR VISION GLASS	MFB1	METAL FINISH B1 - TOWER B
GTX2	CHARCOAL VISION GLASS	MFC1	METAL FINISH C1 - TOWER C
GTX3	CHARCOAL SPANDREL GLASS	MF1	METAL FINISH - CHARCOAL
GTX4	GREY VISION GLASS	STX1	NATURAL STONE 1 - LOBBY ENTRIES
MCA1	METAL CLADDING A1 - TOWER A	STX2	NATURAL STONE 2 - LOBBY ENTRIES

PERMIT ISSUE

Revisions / 27.09.17 ISSUED FOR TOWN PLANNING AMENDMENT MD

Project / **The Glen - Residential Towers**
227 - 235 Springvale Rd
Glen Waverley

Drawing / **BUILDING C EAST ELEVATION**

Project No / **217059** Date / **27/09/17**

Author / **AF**

Scale: @ A1 / **1 : 200**

Drawing No. / **TP02.09 -**

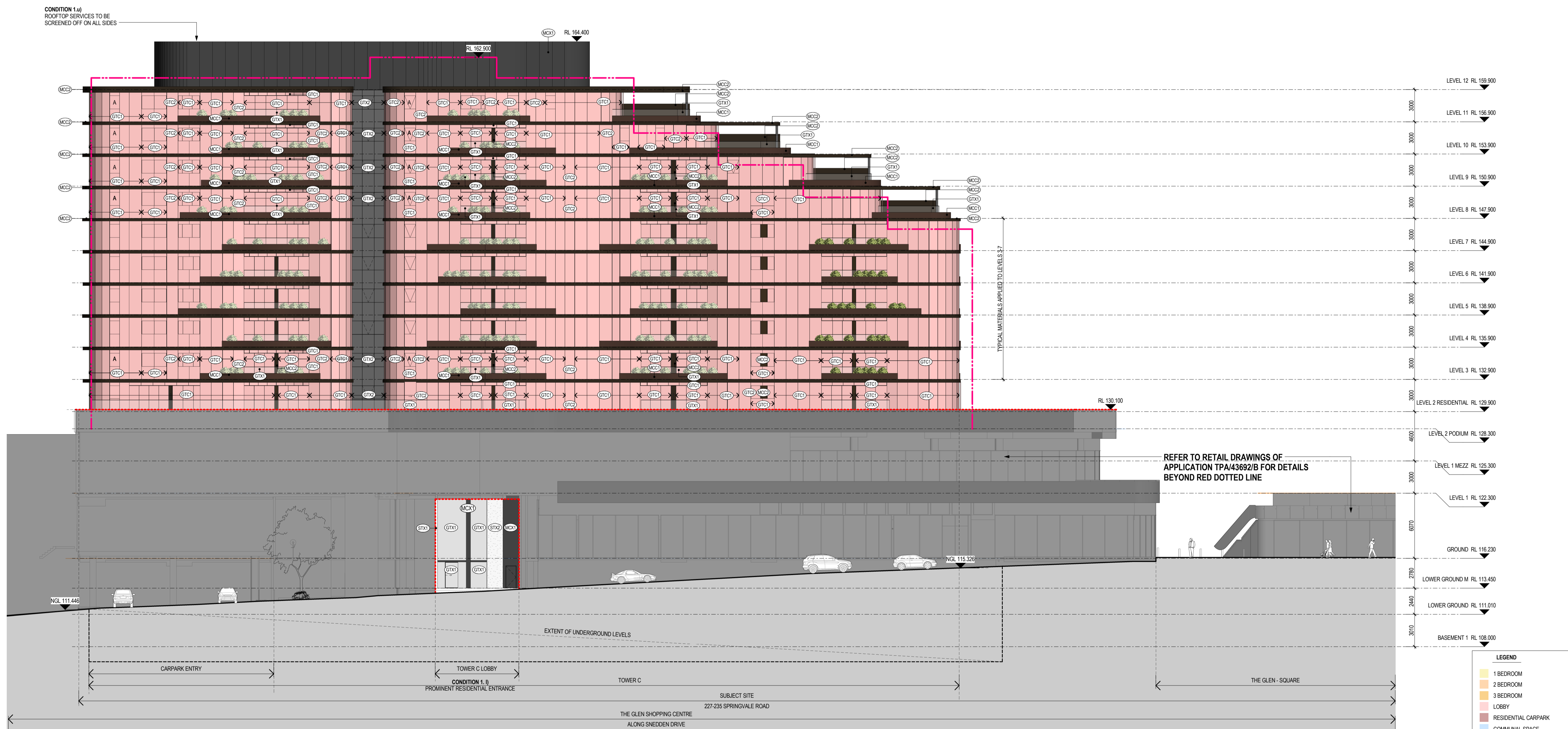
Disclaimer: Rothe Lowman Property Pty. Ltd. retains all common law, statutory law and other rights including copyright and intellectual property rights in respect of this document. The recipient indemnifies Rothe Lowman Property Pty. Ltd. against all claims resulting from use of this document for any purpose other than its intended use, unauthorized changes or reuse of the document on other projects without the permission of Rothe Lowman Property Pty. Ltd. Under no circumstance shall transfer of this document be deemed a sale or constitute a transfer of the license to use this document. ABN 76 005 783 997

LEGEND

	1 BEDROOM
	2 BEDROOM
	3 BEDROOM
	LOBBY
	RESIDENTIAL CARPARK
	COMMUNAL SPACE
	RETAIL
	A AWNING
	PREVIOUSLY APPROVED RESIDENTIAL TOWER OUTLINE PERMIT NO. TPA43692/B
	EXTENT OF APPLICATION

rothelowman

Brisbane, Melbourne, Sydney
www.rothelowman.com.au



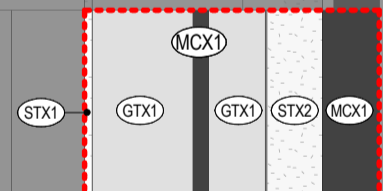
CONDITION 1.ii)
ROOFTOP SERVICES TO BE
SCREENED OFF ON ALL SIDES

RL 164.400

RL 162.900

RL 130.100

REFER TO RETAIL DRAWINGS OF
APPLICATION TPA/43692/B FOR DETAILS
BEYOND RED DOTTED LINE



- LEGEND**
- 1 BEDROOM
 - 2 BEDROOM
 - 3 BEDROOM
 - LOBBY
 - RESIDENTIAL CARPARK
 - COMMUNAL SPACE
 - RETAIL
 - A AWNING
 - PREVIOUSLY APPROVED
RESIDENTIAL TOWER OUTLINE
PERMIT NO. TPA/43692/B
 - EXTENT OF APPLICATION

MATERIALS SCHEDULE

- | | |
|----------------------------------|--------------------------------------|
| AFX1 APPLIED FINISH - CHARCOAL | MCA2 METAL CLADDING A2 - TOWER A |
| GTA1 VISION GLASS A1 - TOWER A | MCB1 METAL CLADDING B1 - TOWER B |
| GTA2 SPANDREL GLASS A2 - TOWER A | MCB2 METAL CLADDING B2 - TOWER B |
| GTB1 VISION GLASS B1 - TOWER B | MCC1 METAL CLADDING C1 - TOWER C |
| GTB2 SPANDREL GLASS B2 - TOWER B | MCC2 METAL CLADDING C2 - TOWER C |
| GTC1 VISION GLASS C1 - TOWER C | MCA1 METAL CLADDING - CHARCOAL |
| GTC2 SPANDREL GLASS C2 - TOWER C | MFA1 METAL FINISH A1 - TOWER A |
| GTX1 CLEAR VISION GLASS | MFB1 METAL FINISH B1 - TOWER B |
| GTX2 CHARCOAL VISION GLASS | MFC1 METAL FINISH C1 - TOWER C |
| GTX3 CHARCOAL SPANDREL GLASS | MFX1 METAL FINISH - CHARCOAL |
| GTX4 GREY VISION GLASS | STX1 NATURAL STONE 1 - LOBBY ENTRIES |
| MCA1 METAL CLADDING A1 - TOWER A | STX2 NATURAL STONE 2 - LOBBY ENTRIES |

PERMIT ISSUE

Revisions / 27.09.17 ISSUED FOR TOWN PLANNING AMENDMENT MD

Project / **The Glen - Residential Towers**
227 - 235 Springvale Rd
Glen Waverley

Drawing / **BUILDING C WEST ELEVATION**

Project No / **217059** Date / **27/09/17**

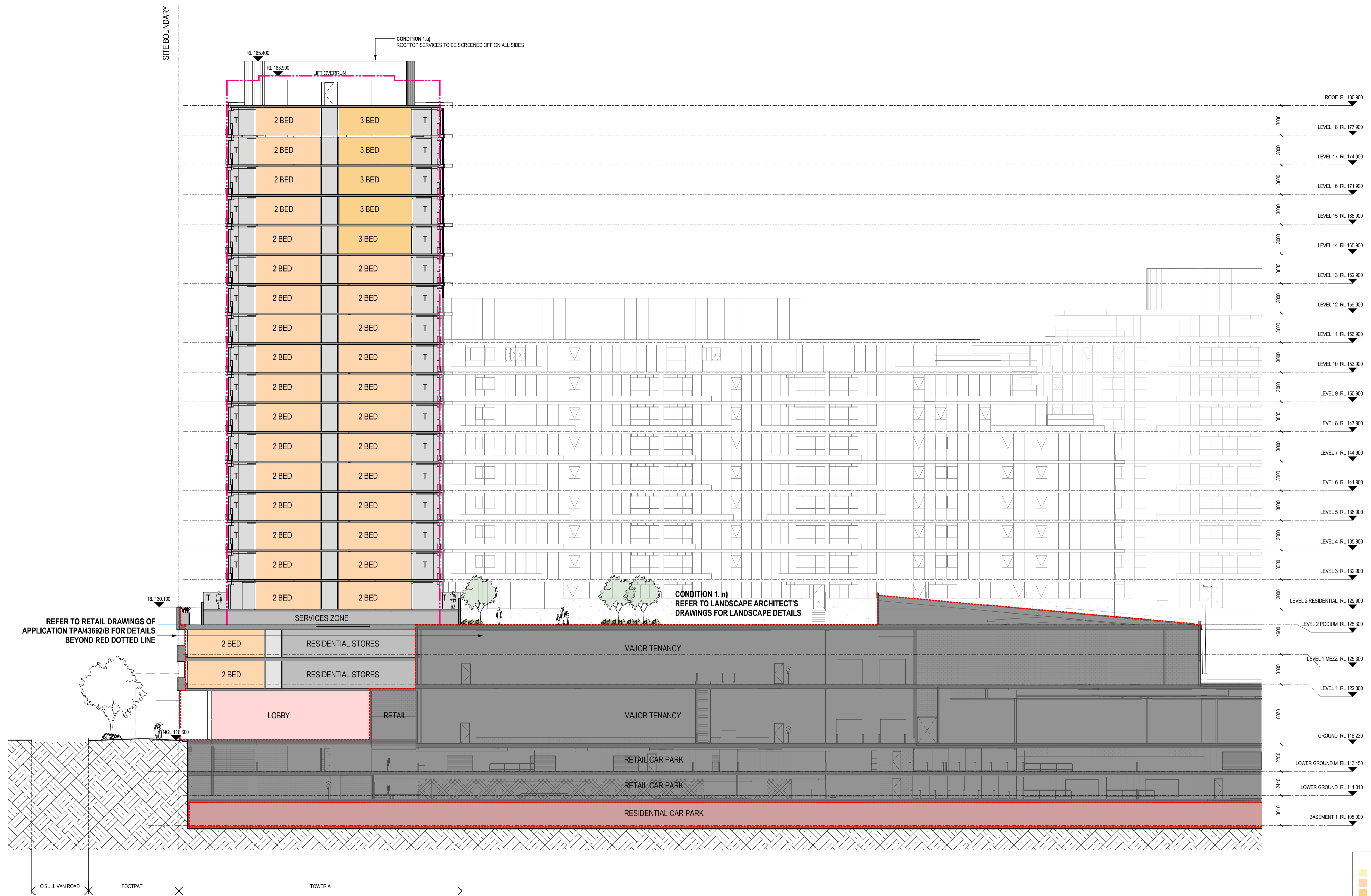
Author / **AF**

Scale: @ A1 / **1 : 200**

Drawing No. / **TP02.10 -**

rothelowman

Brisbane, Melbourne, Sydney
www.rothelowman.com.au



LEGEND

- 1 BEDROOM
- 2 BEDROOM
- 3 BEDROOM
- LOBBY
- RESIDENTIAL CARPARK
- COMMUNAL SPACE
- RETAIL
- A AWNING
- PREVIOUSLY APPROVED RESIDENTIAL TOWER OUTLINE PERMIT NO. TPA/43692/B
- EXTENT OF APPLICATION

PERMIT ISSUE

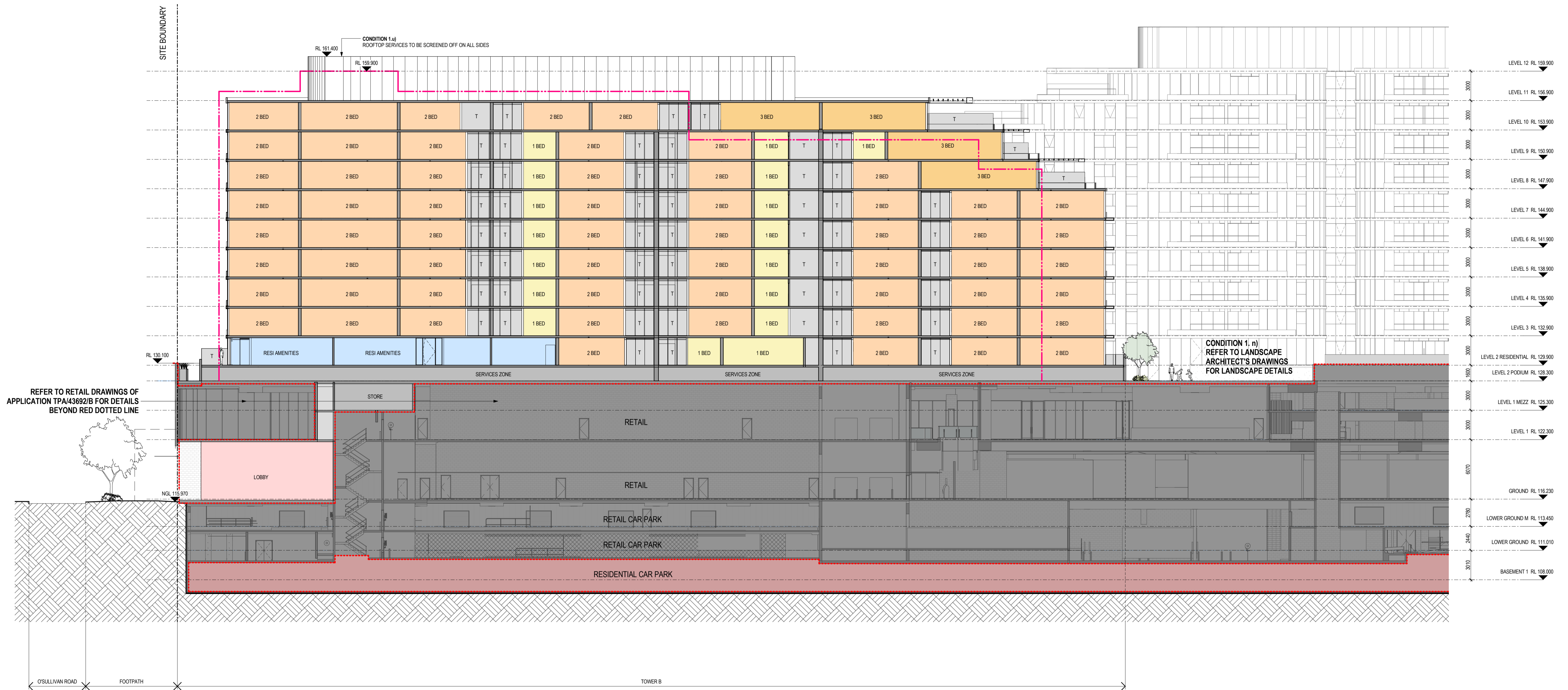
Revisions / 27.09.17 ISSUED FOR TOWN PLANNING AMENDMENT MD Project / **The Glen - Residential Towers** Drawing / **SECTION A - BUILDING A LOBBY** Project No / **217059** Date / **27/09/17** Author / **AF** Scale: @ A1 / **1 : 200** Drawing No. / **TP03.01 -**

The Glen - Residential Towers
227 - 235 Springvale Rd
Glen Waverley

Disclaimer: Rothelowman Property Pty. Ltd. retains all common law, statutory law and other rights including copyright and intellectual property rights in respect of this document. The recipient indemnifies Rothelowman Property Pty. Ltd. against all claims resulting from use of this document for any purpose other than its intended use, unauthorized changes or reuse of the document on other projects without the permission of Rothelowman Property Pty. Ltd. Under no circumstance shall transfer of this document be deemed a sale or constitute a transfer of the license to use this document. ABN 76 005 783 997

rothelowman

Brisbane, Melbourne, Sydney
www.rothelowman.com.au



PERMIT ISSUE

Revisions / 27.09.17 ISSUED FOR TOWN PLANNING AMENDMENT MD

Project / **The Glen - Residential Towers**
227 - 235 Springvale Rd
Glen Waverley

Drawing / **SECTION B - BUILDING B LOBBY**

Project No / **217059** Date / **27/09/17**

Author / **MR**

Scale: @ A1 / **1 : 200**

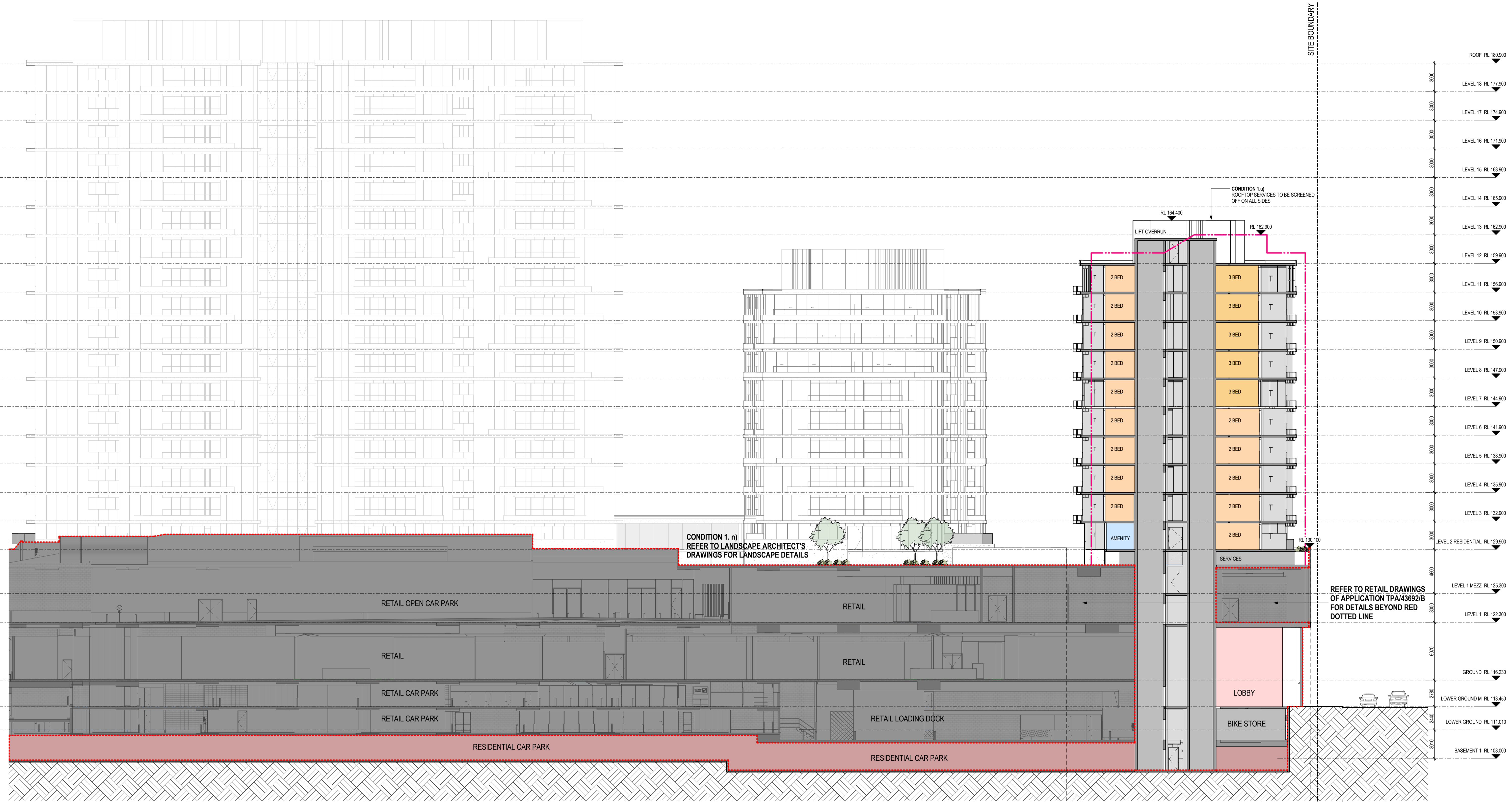
Drawing No. / **TP03.02 -**

LEGEND	
[Yellow Box]	1 BEDROOM
[Orange Box]	2 BEDROOM
[Light Orange Box]	3 BEDROOM
[Pink Box]	LOBBY
[Red Box]	RESIDENTIAL CARPARK
[Blue Box]	COMMUNAL SPACE
[Grey Box]	RETAIL
[A]	AWNING
[Pink Dashed Line]	PREVIOUSLY APPROVED RESIDENTIAL TOWER OUTLINE PERMIT NO. TPX43852/B
[Red Dashed Line]	EXTENT OF APPLICATION

Disclaimer: Rothe Lowman Property Pty. Ltd. retains all common law, statutory law and other rights including copyright and intellectual property rights in respect of this document. The recipient indemnifies Rothe Lowman Property Pty. Ltd. against all claims resulting from use of this document for any purpose other than its intended use, unauthorized changes or reuse of the document on other projects without the permission of Rothe Lowman Property Pty. Ltd. Under no circumstance shall transfer of this document be deemed a sale or constitute a transfer of the license to use this document. ABN 76 005 783 997

rothelowman

Brisbane, Melbourne, Sydney
www.rothelowman.com.au



LEGEND	
[Yellow Box]	1 BEDROOM
[Orange Box]	2 BEDROOM
[Light Orange Box]	3 BEDROOM
[Pink Box]	LOBBY
[Red Box]	RESIDENTIAL CARPARK
[Blue Box]	COMMUNAL SPACE
[Grey Box]	RETAIL
[A]	AWNING
[Red Dotted Line]	PREVIOUSLY APPROVED RESIDENTIAL TOWER OUTLINE PERMIT NO. TPA/43692/B
[Red Dashed Line]	EXTENT OF APPLICATION

PERMIT ISSUE

Revisions / 27.09.17 ISSUED FOR TOWN PLANNING AMENDMENT MD

Project / **The Glen - Residential Towers**
 227 - 235 Springvale Rd
 Glen Waverley

Drawing / **SECTION C - BUILDING C LOBBY**

Project No / **217059** Date / **27/09/17** Author / **MR** Scale: @ A1 / **1 : 200**

Drawing No. / **TP03.03 -**

Disclaimer: Rothe Lowman Property Pty. Ltd. retains all common law, statutory law and other rights including copyright and intellectual property rights in respect of this document. The recipient indemnifies Rothe Lowman Property Pty. Ltd. against all claims resulting from use of this document for any purpose other than its intended use, unauthorised changes or reuse of the document on other projects without the permission of Rothe Lowman Property Pty. Ltd. Under no circumstance shall transfer of this document be deemed a sale or constitute a transfer of the license to use this document. ABN 76 005 783 997

rothelowman

Brisbane, Melbourne, Sydney
 www.rothelowman.com.au