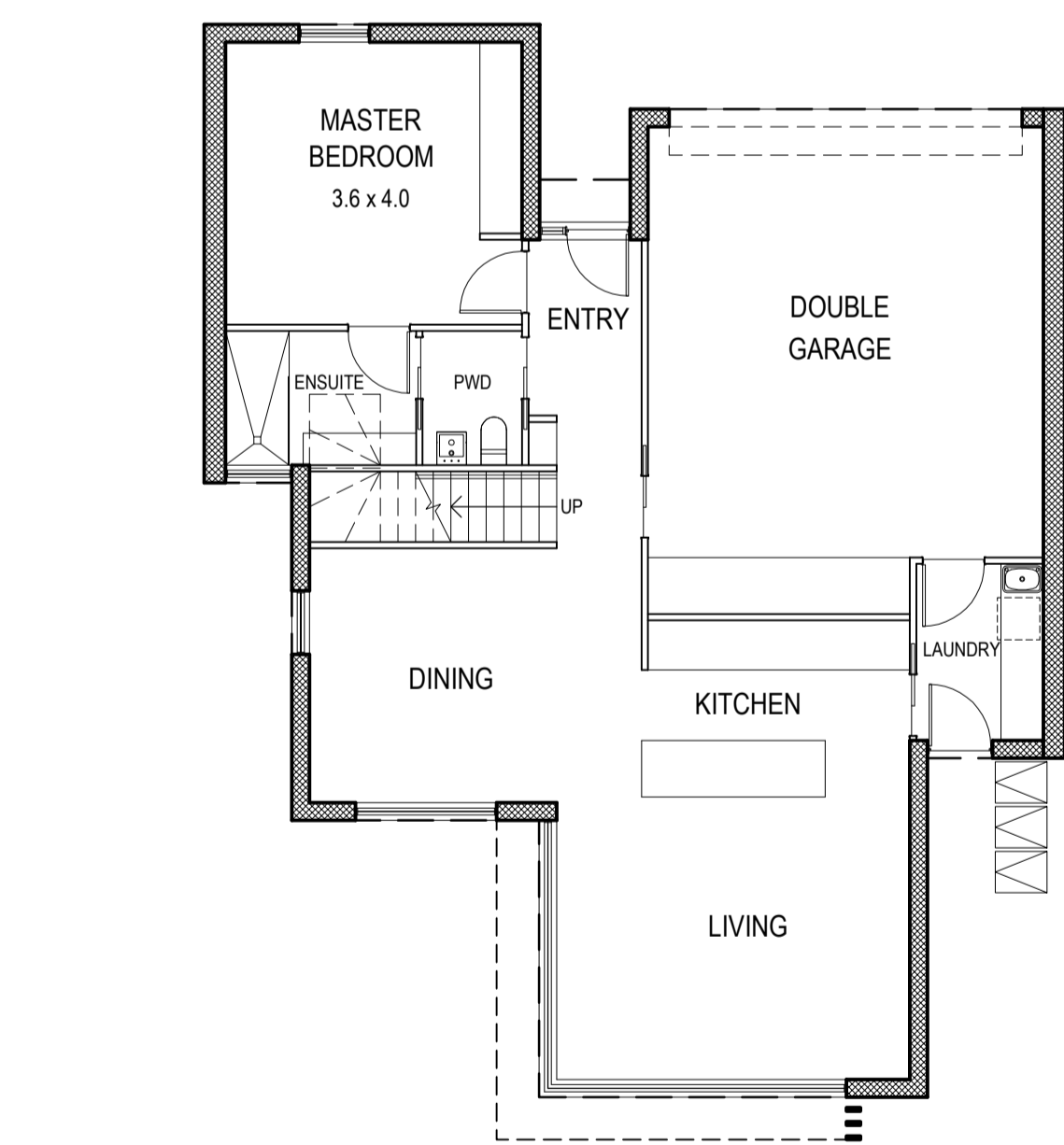
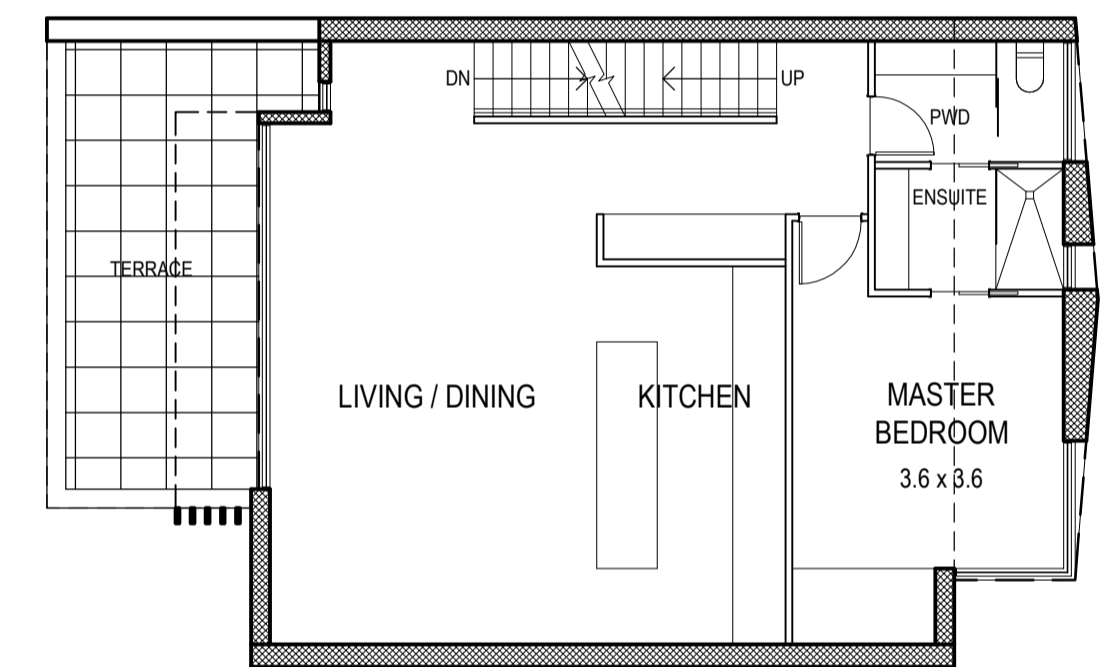
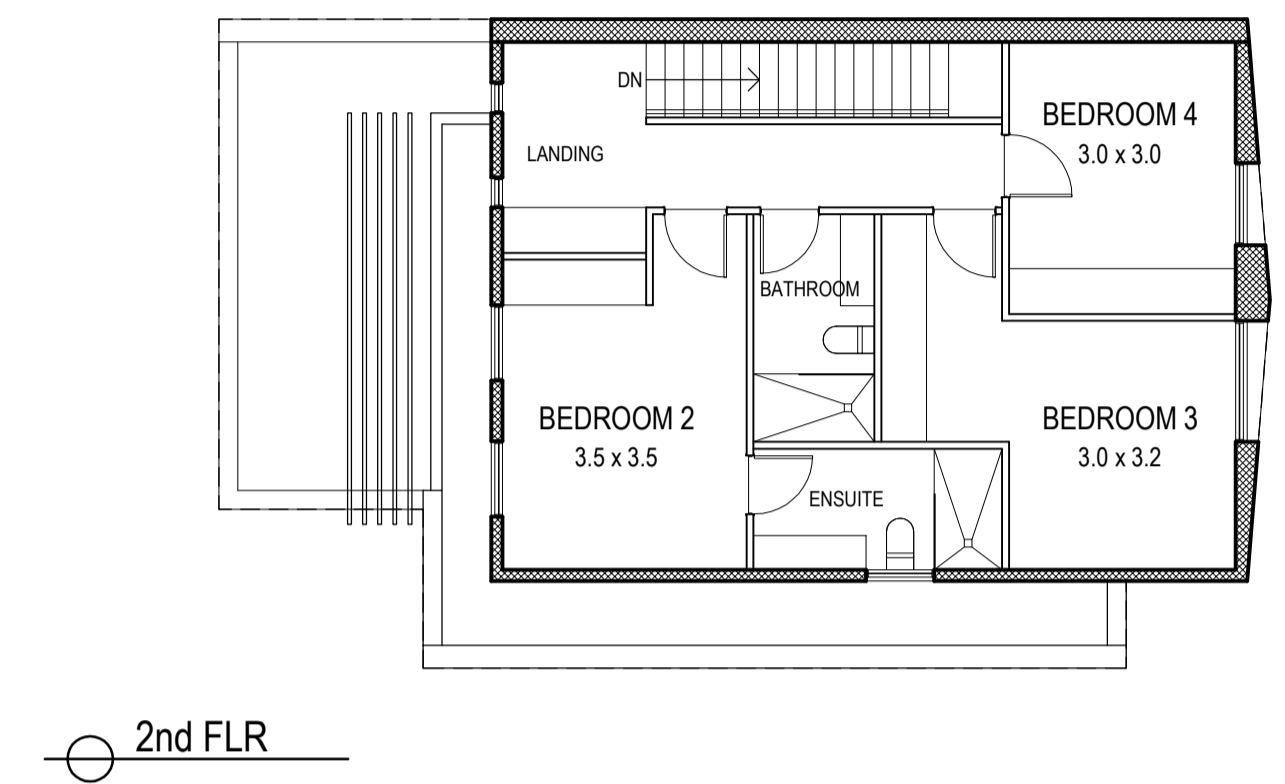
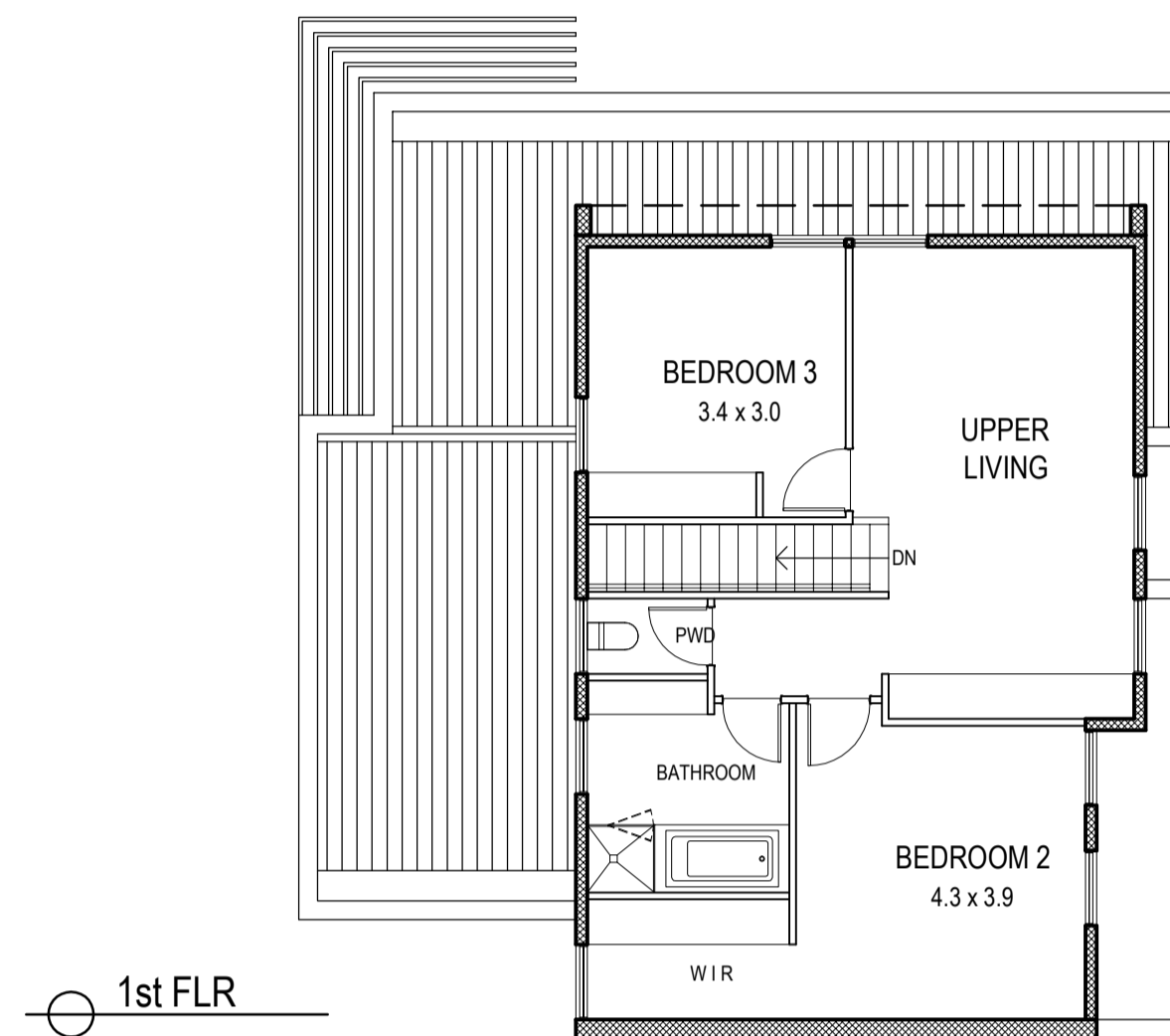
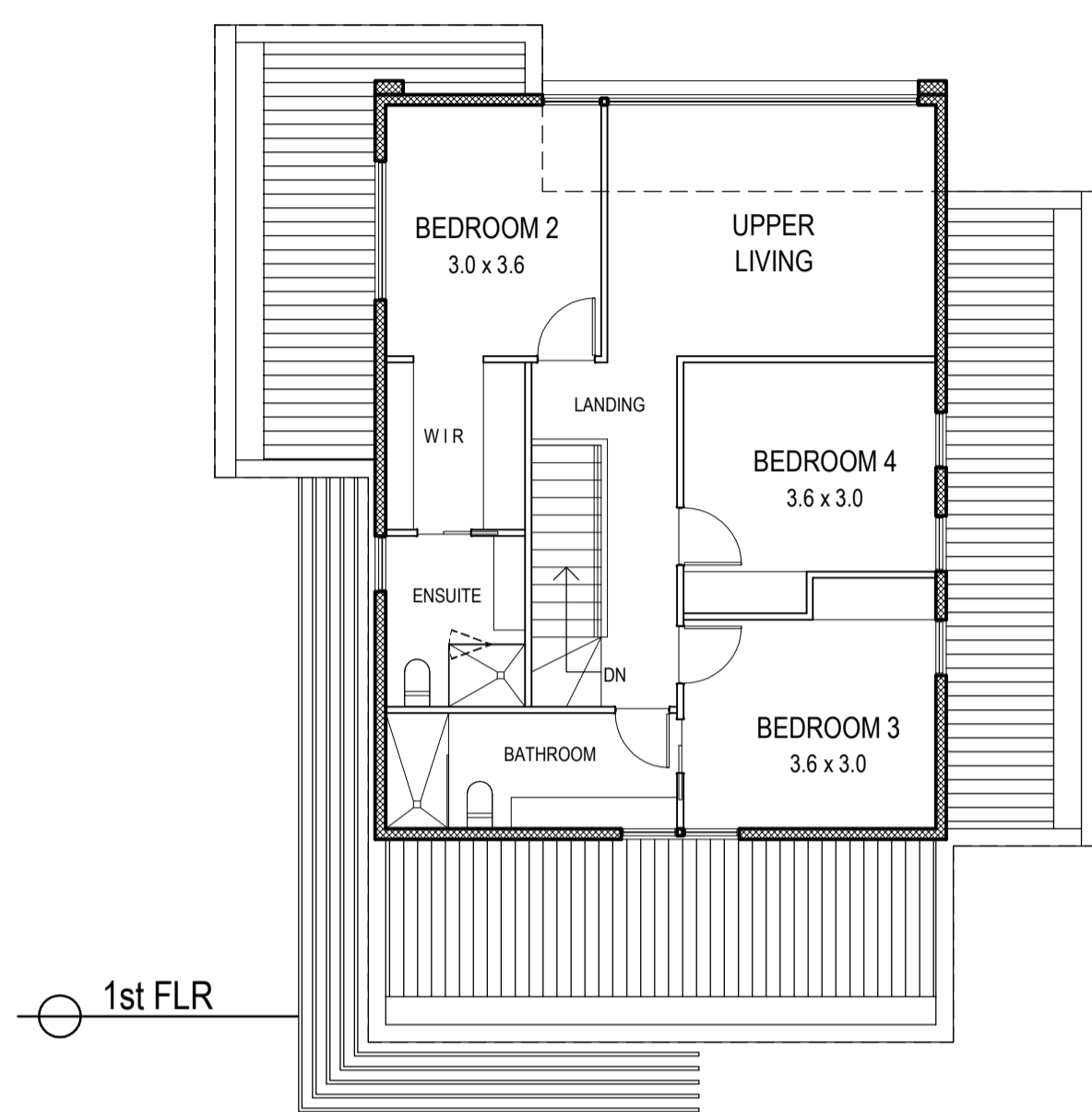
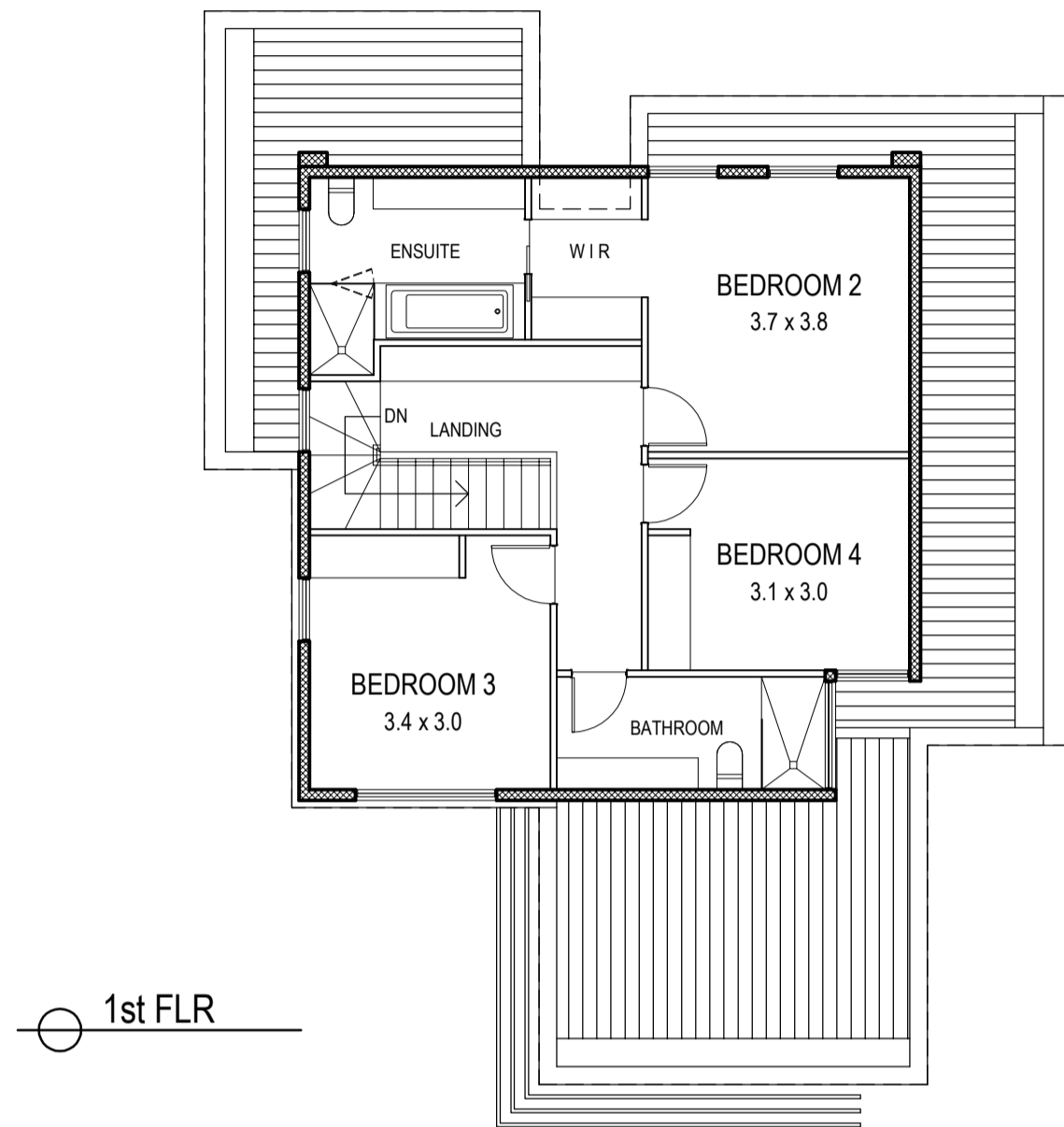


Unit Type	Area	Total	225	sqm
Ground Flr	98.50	185.30	Floor area	
First Flr	86.80			
Garage	40.00			
Rear Courtyard	106.60	119.70	Open spaces	
Open Space	13.10			

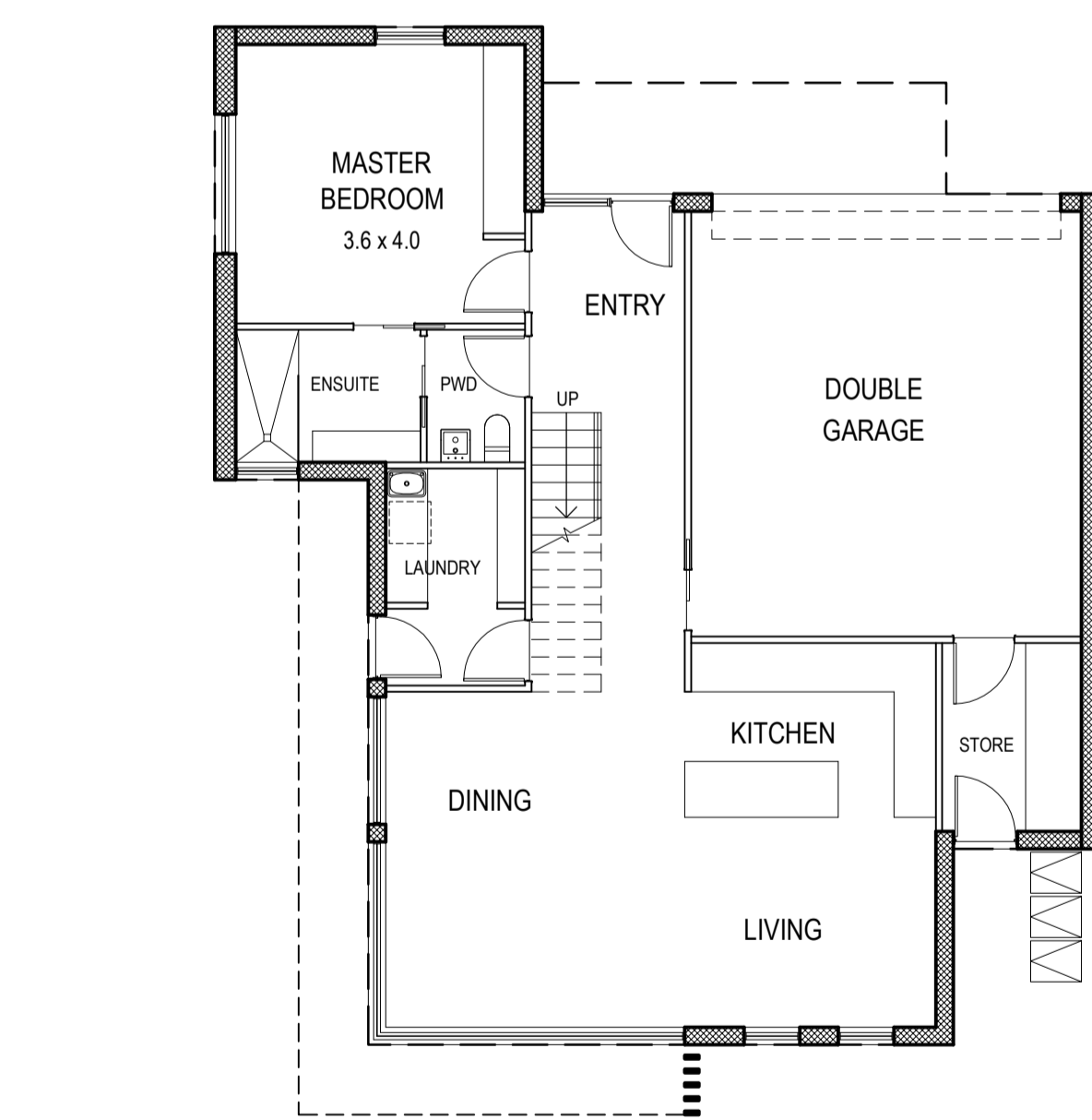
Unit Type	Area	Total	238	sqm
Ground Flr	108.40	202.20	Floor area	
First Flr	93.80			
Garage	36.00			
Rear Courtyard	82.60	98.80	Open spaces	
Open Space	16.20			

Unit Type	Area	Total	210	sqm
Ground Flr	95.60	173.10	Floor area	
First Flr	77.50			
Garage	37.00			
Rear Courtyard	121.50	148.50	Open spaces	
Open Space	27.00			

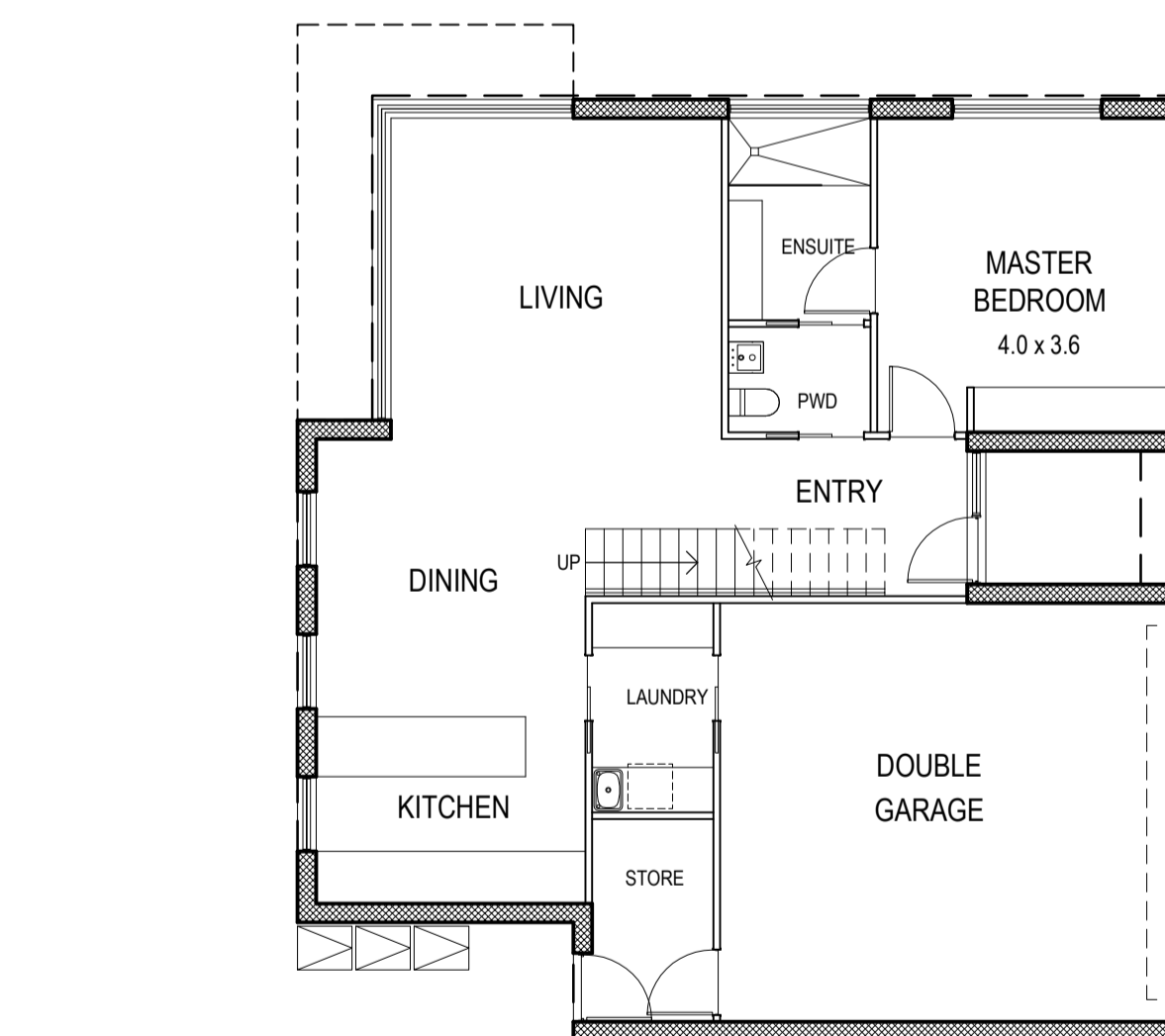
Unit Type	Area	Total	256	sqm
Ground Flr	57.60	219.70	Floor area	
First Flr	88.20			
Second Flr	73.90			
Garage	36.50			
Terrace	18.50			
Rear Courtyard	49.40	74.40	Open spaces	
Open Space	6.50			



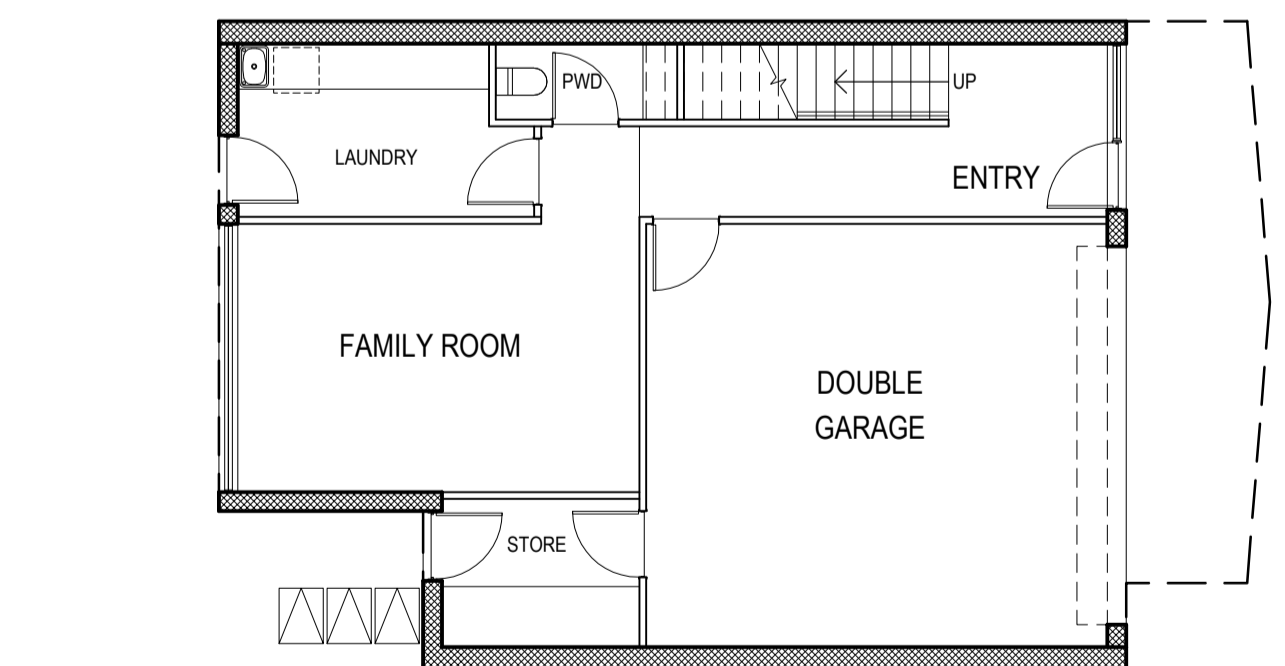
UNIT TYPE - A1



UNIT TYPE - A2



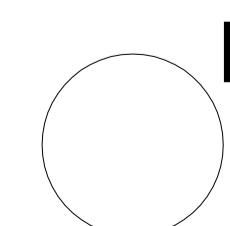
UNIT TYPE - A3



UNIT TYPE - B1

REVISIONS:			
No	Date	Description	By
P1	16-05-2017	For Information	
P2	10-04-2017	For Information	
P2	19-04-2017	For Information	
P3	01-05-2017	Town Planning Submission	

THIS DRAWING IS COPYRIGHT AND THE PROPERTY OF PETER SGOURAKIS ARCHITECT AND MUST NOT BE RETAINED, COPIED, OR USED WITHOUT THE AUTHORITY OF PETER SGOURAKIS ARCHITECT.



PROJECT:
149 HANSWORTH STREET
MULGRAVE VIC 3170
CLIENT: PONG PROPERTY DEVELOPMENT P/L
DRAWING TITLE:
UNIT TYPES

- TOWN PLANNING -
DATE: MAY-01-17
SCALE: 1:100 @ A1
1:200 @ A3
DWG No: TA23
REV: P3
MAY 01 2017

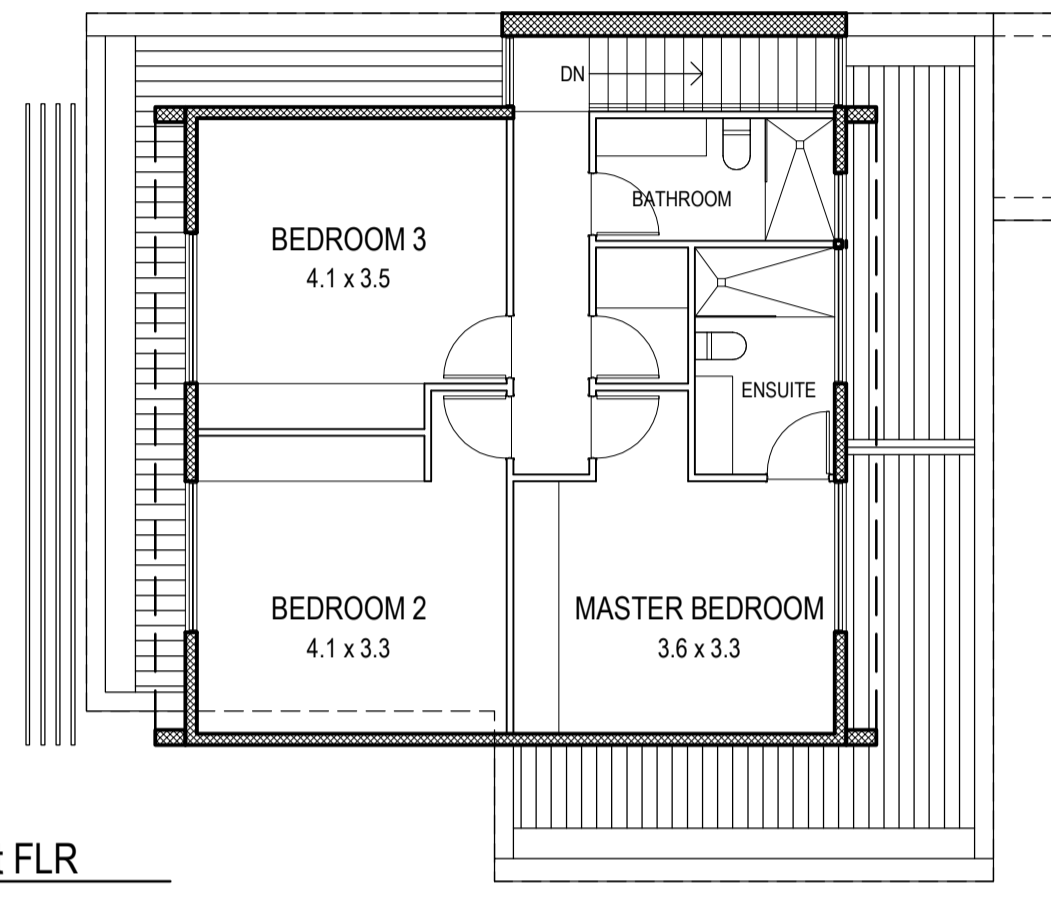
SGOURAKIS
ARCHITECTS
3 ANDERSON PLACE, HANWORTH VIC 3048
T: 51 951 986
WWW.SGOURAKISARCHITECTS.COM

Unit Type	Area	Total	176	sqm
Ground Flr	57.60	136.30	Floor area	
First Flr	78.70			
Garage	40.00			
Rear Courtyard	70.00	81.50	Open spaces	
Open Space	11.50			

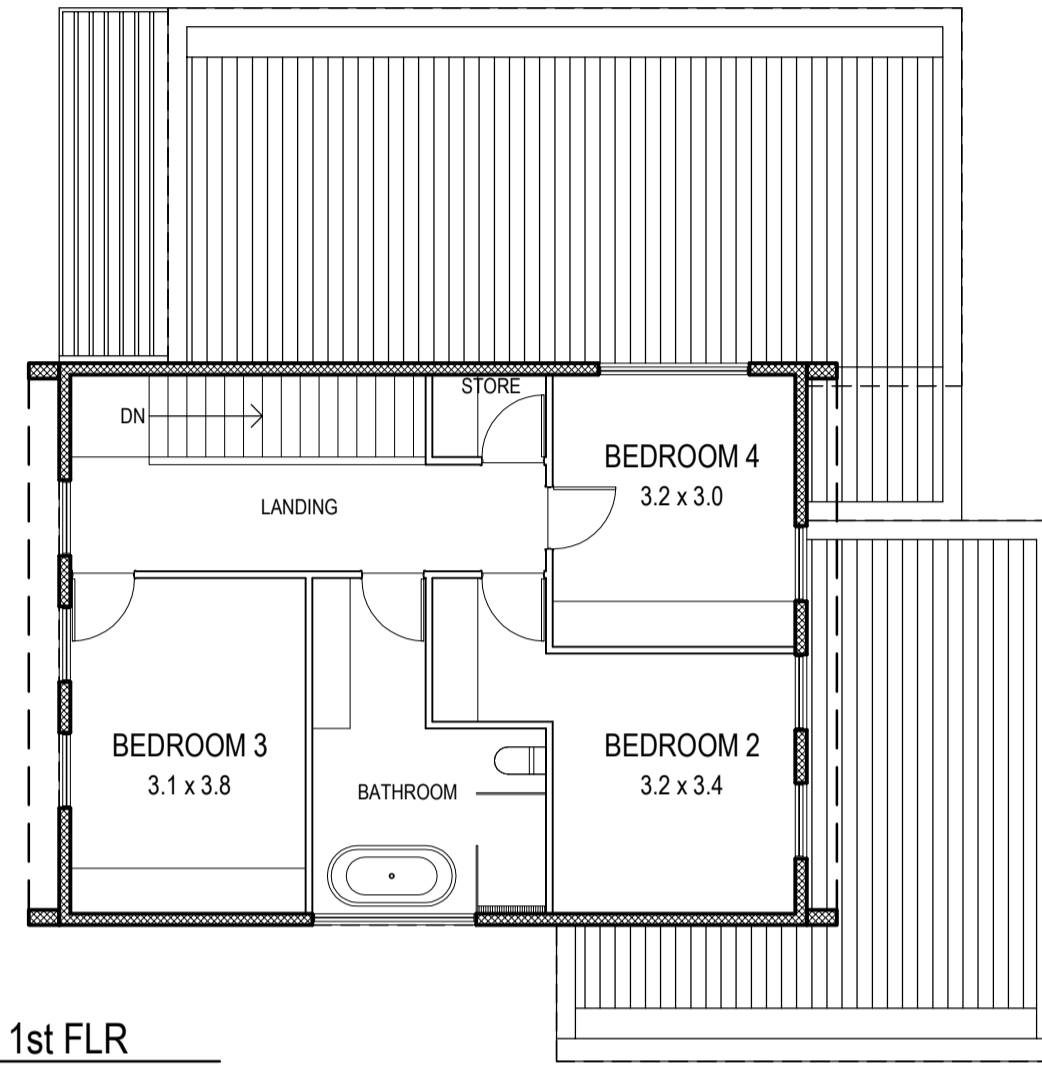
Unit Type	Area	Total	224	sqm
Ground Flr	107.00	180.40	Floor area	
First Flr	73.40			
Garage	44.00			
Rear Courtyard	166.60	193.60	Open spaces	
Open Space	27.00			

Unit Type	Area	Total	203	sqm
Ground Flr	95.50	161.00	Floor area	
First Flr	65.50			
Garage	42.00			
Rear Courtyard	90.70	147.70	Open spaces	
Open Space	57.00			

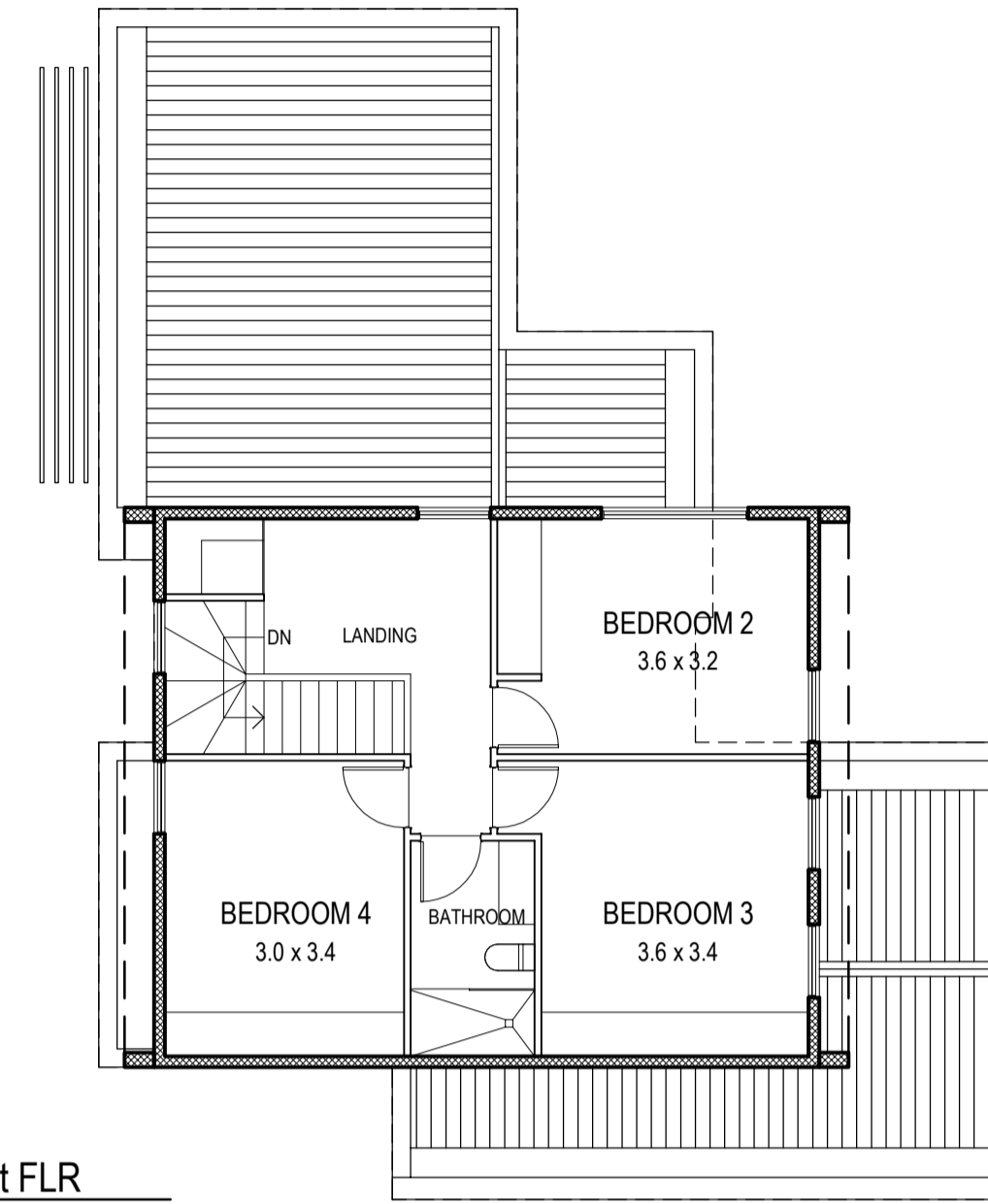
Unit Type	Area	Total	236	sqm
Ground Flr	116.70	197.50	Floor area	
First Flr	80.80			
Garage	38.00			
Rear Courtyard	103.60	133.40	Open spaces	
Open Space	29.80			



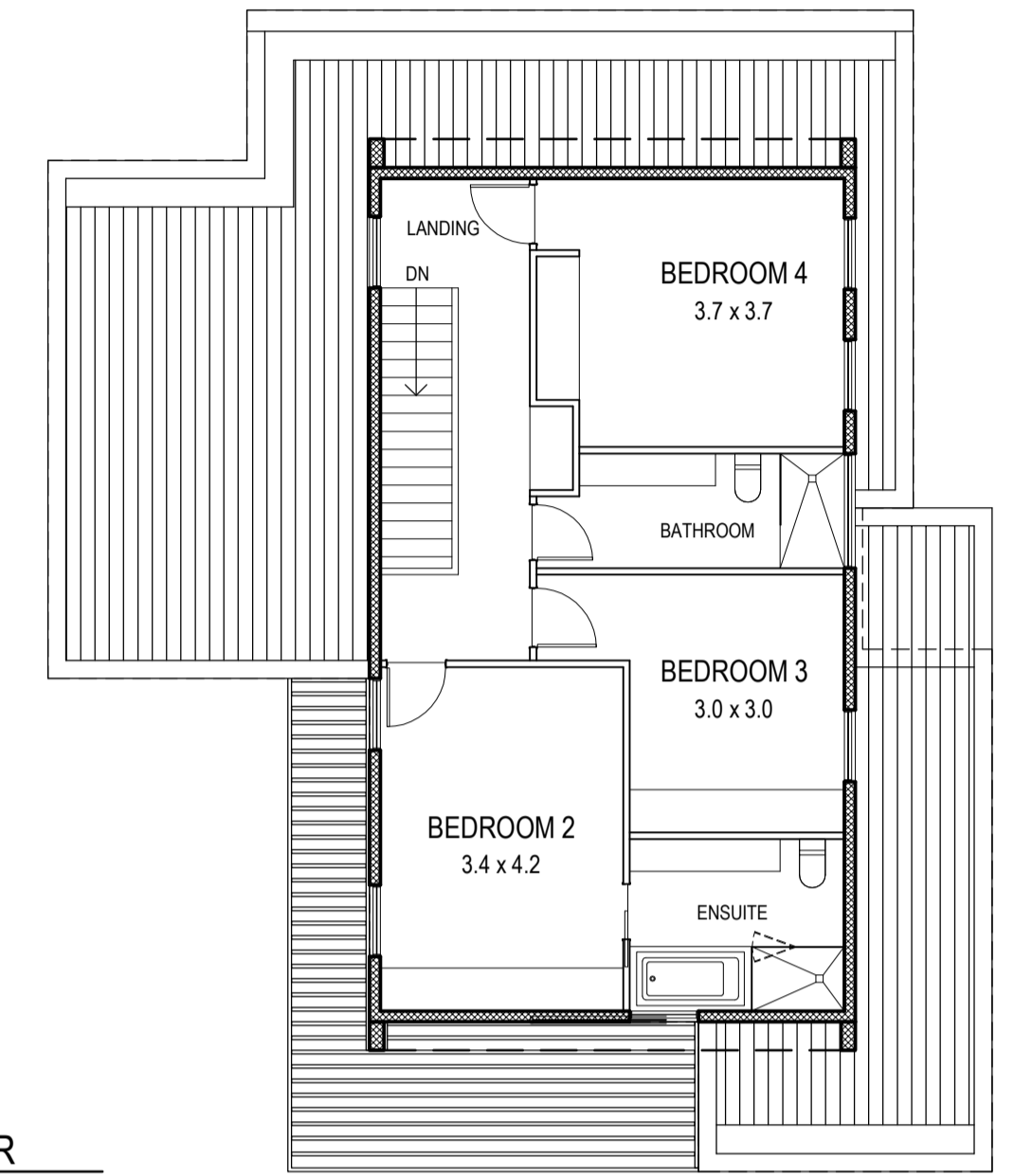
1st FLR



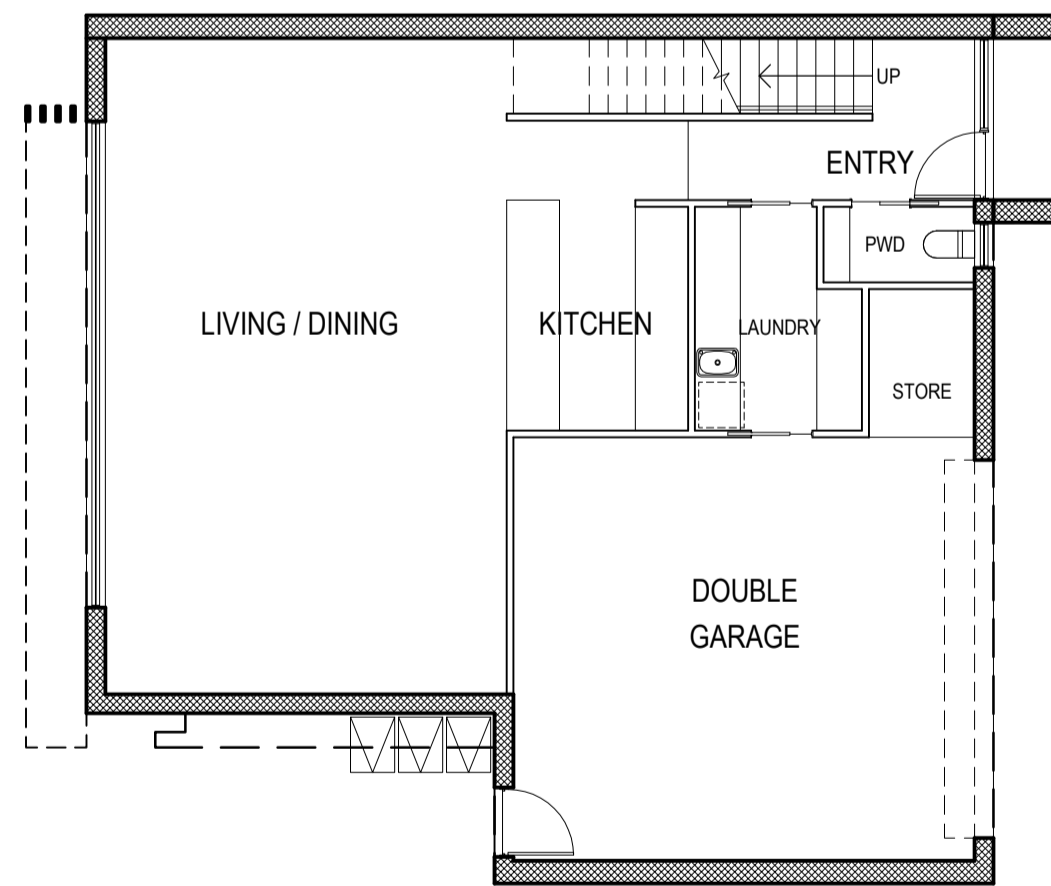
1st FLR



1st FLR

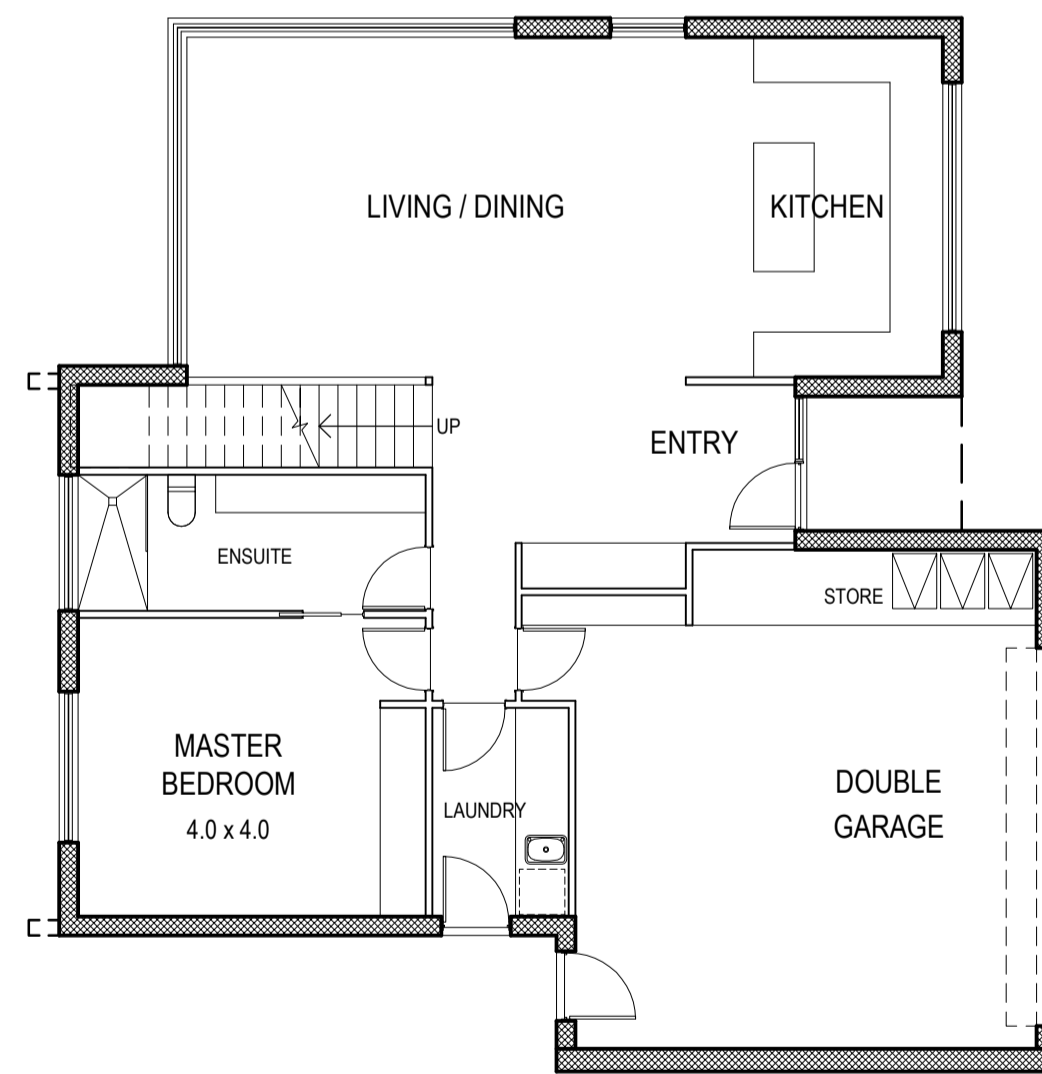


1st FLR



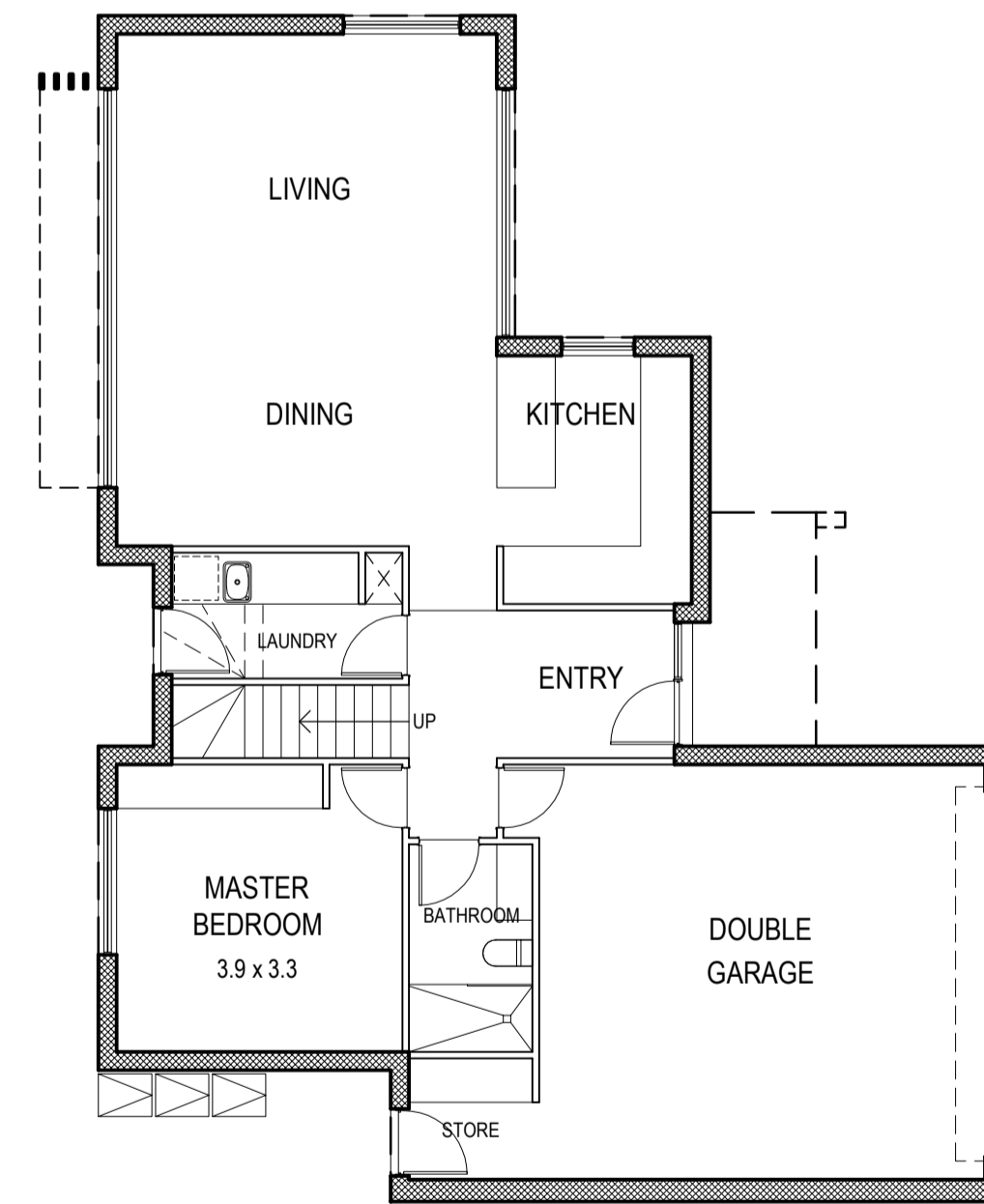
GRND FLR

UNIT TYPE - B2



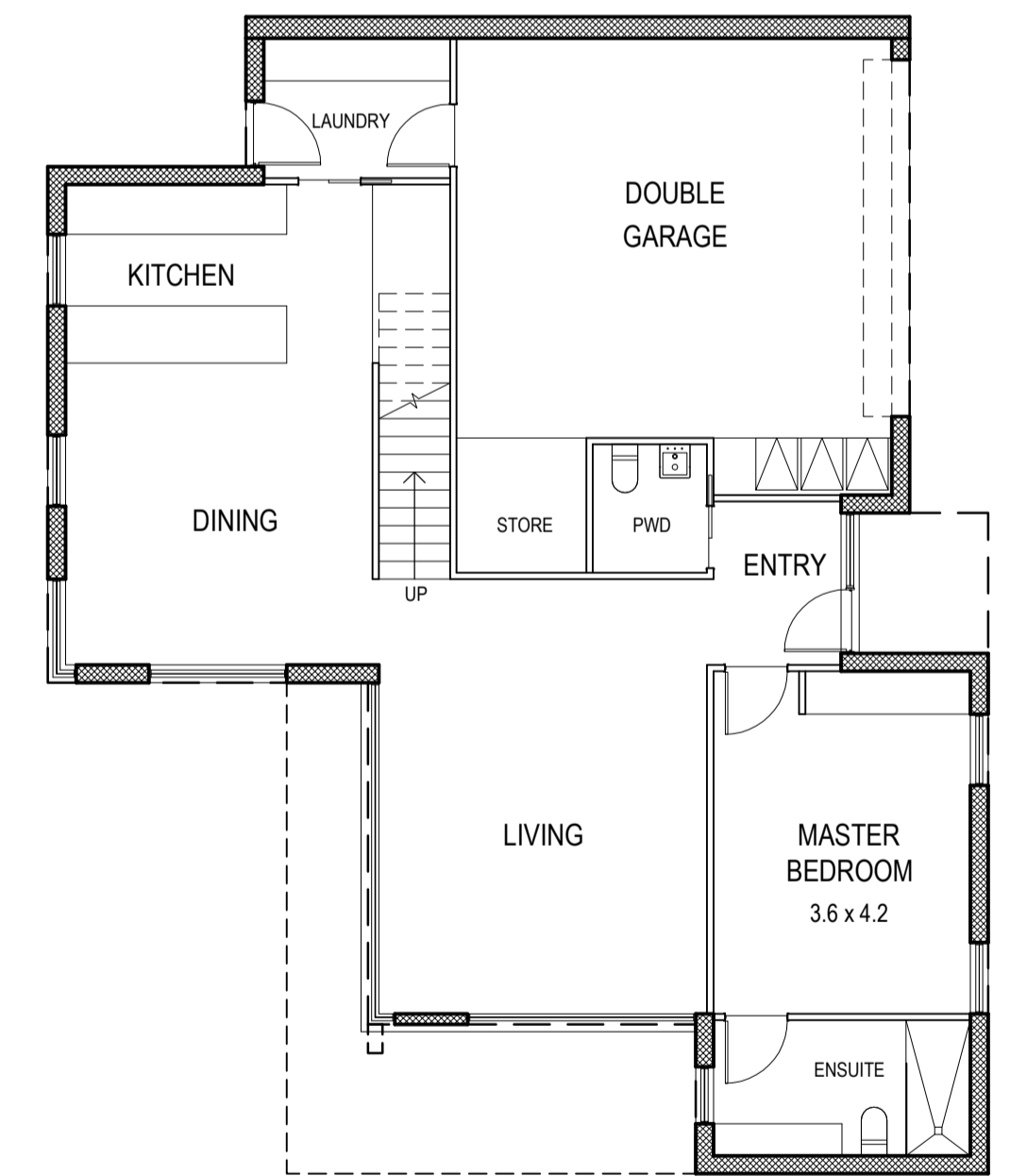
GRND FLR

UNIT TYPE - B3



GRND FLR

UNIT TYPE - B4

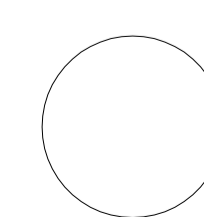


GRND FLR

UNIT TYPE - B5

No	Date	Description	By
P1	16-05-2017	For Information	
P2	10-04-2017	For Information	
P2	19-04-2017	For Information	
P3	01-05-2017	Town Planning Submission	

THIS DRAWING IS COPYRIGHT AND THE PROPERTY OF PETER SGOURAKIS ARCHITECT AND MUST NOT BE RETAINED, COPIED, OR USED WITHOUT THE AUTHORITY OF PETER SGOURAKIS ARCHITECT.



PROJECT:
149 HANSWORTH STREET
MULGRAVE VIC 3170
CLIENT: PONG PROPERTY DEVELOPMENT P/L
DRAWING TITLE:
UNIT TYPES

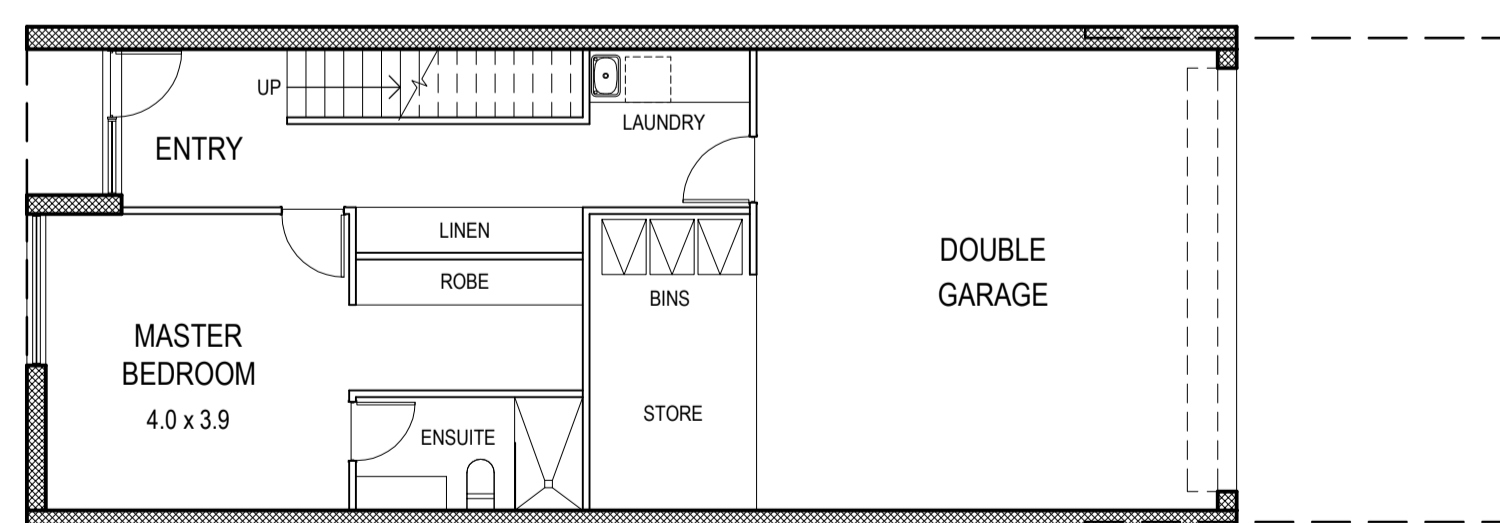
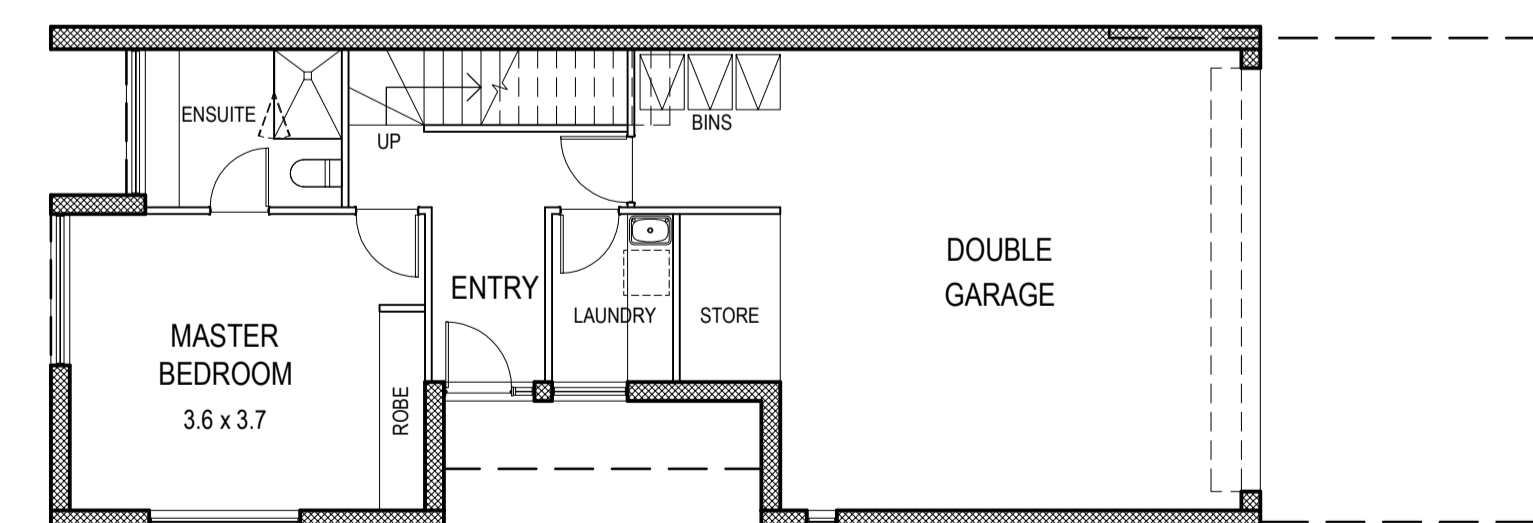
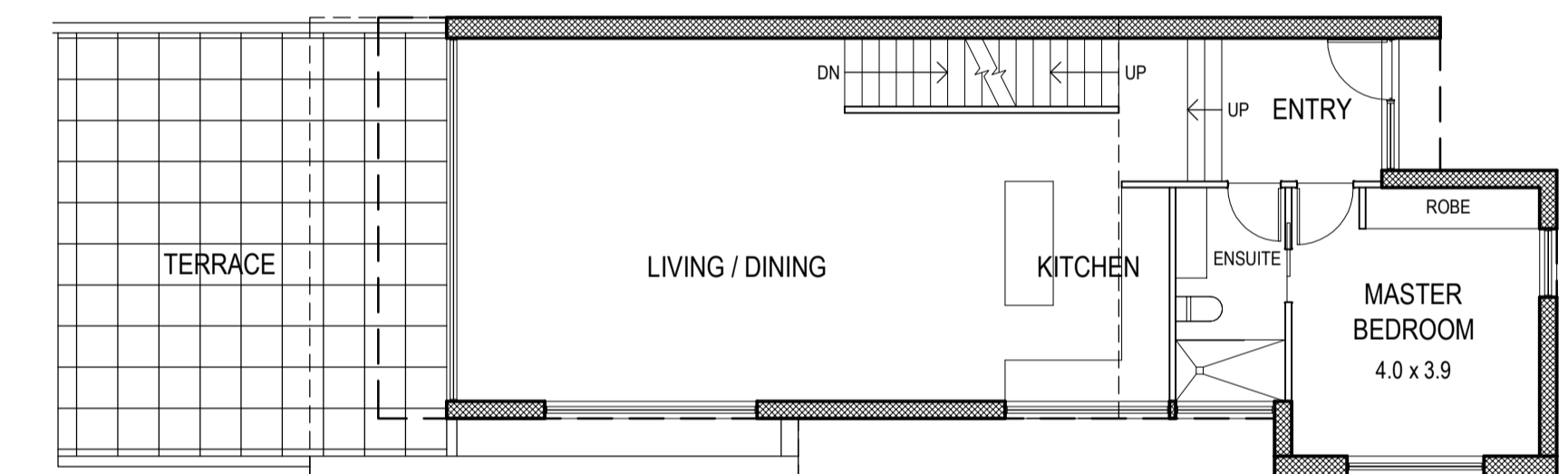
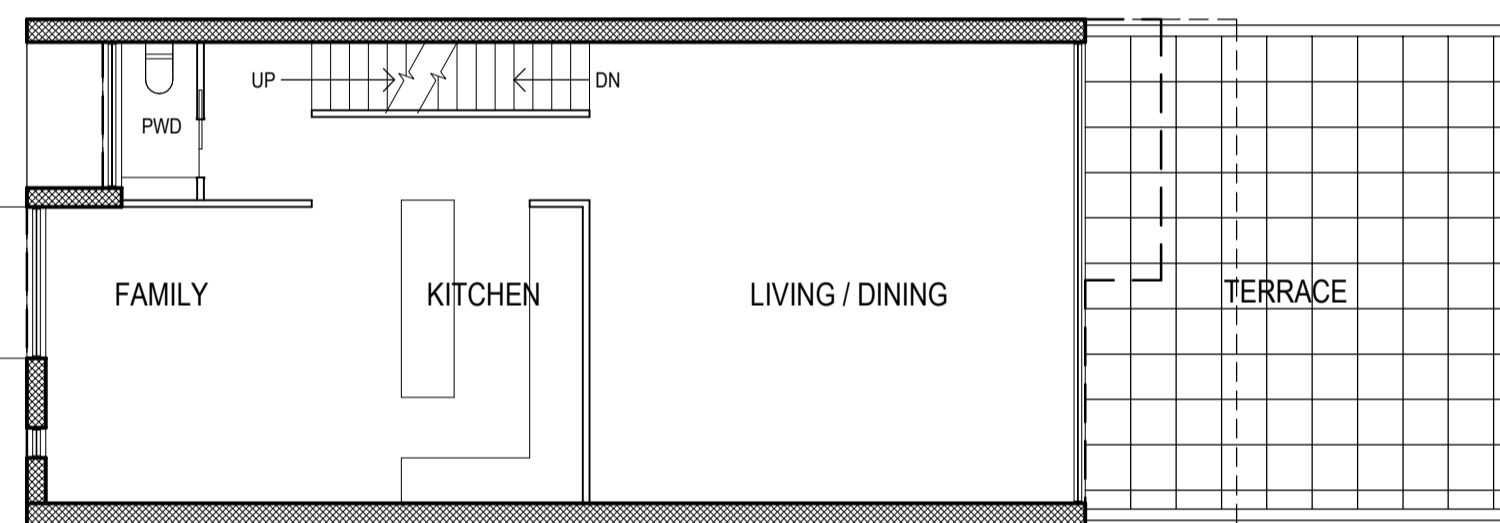
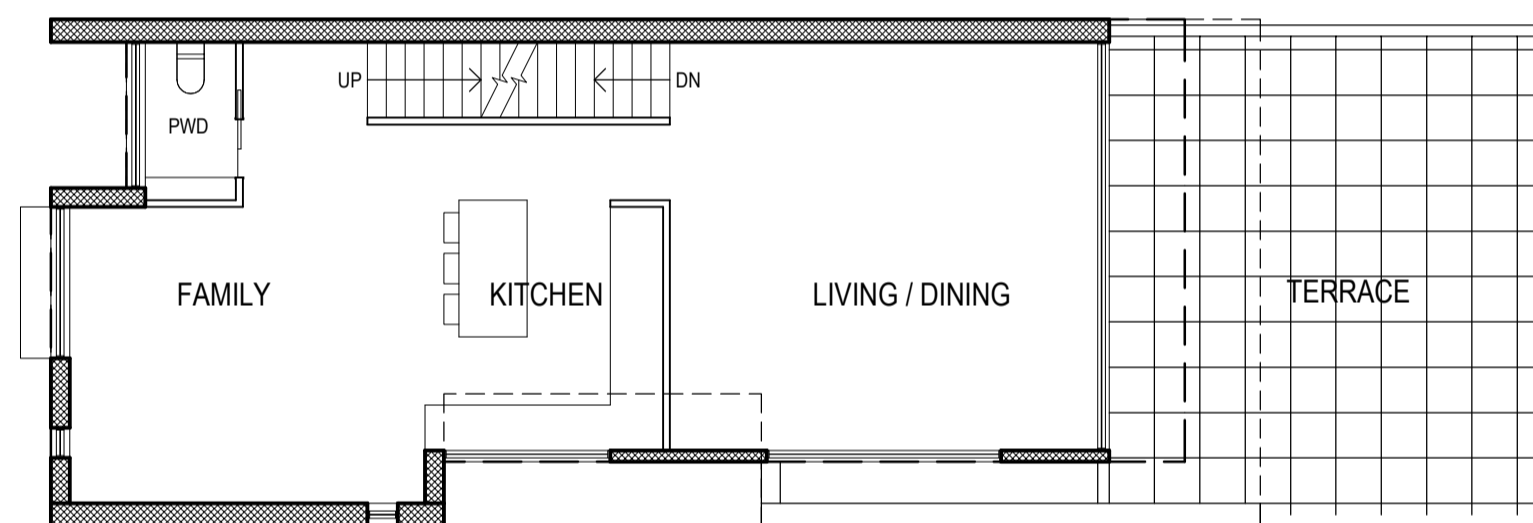
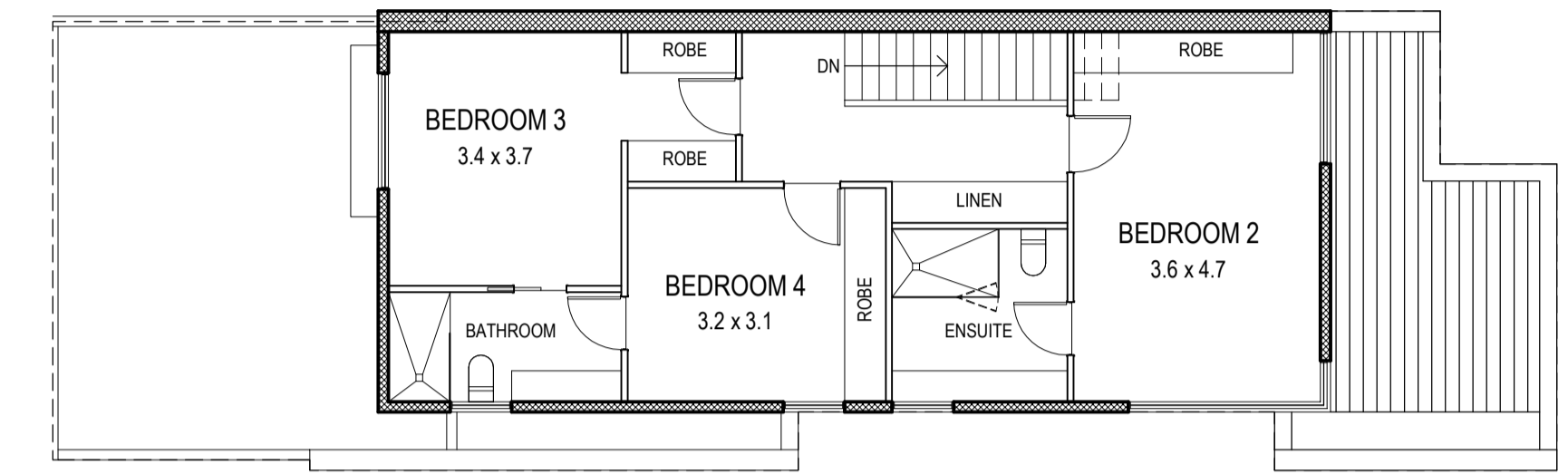
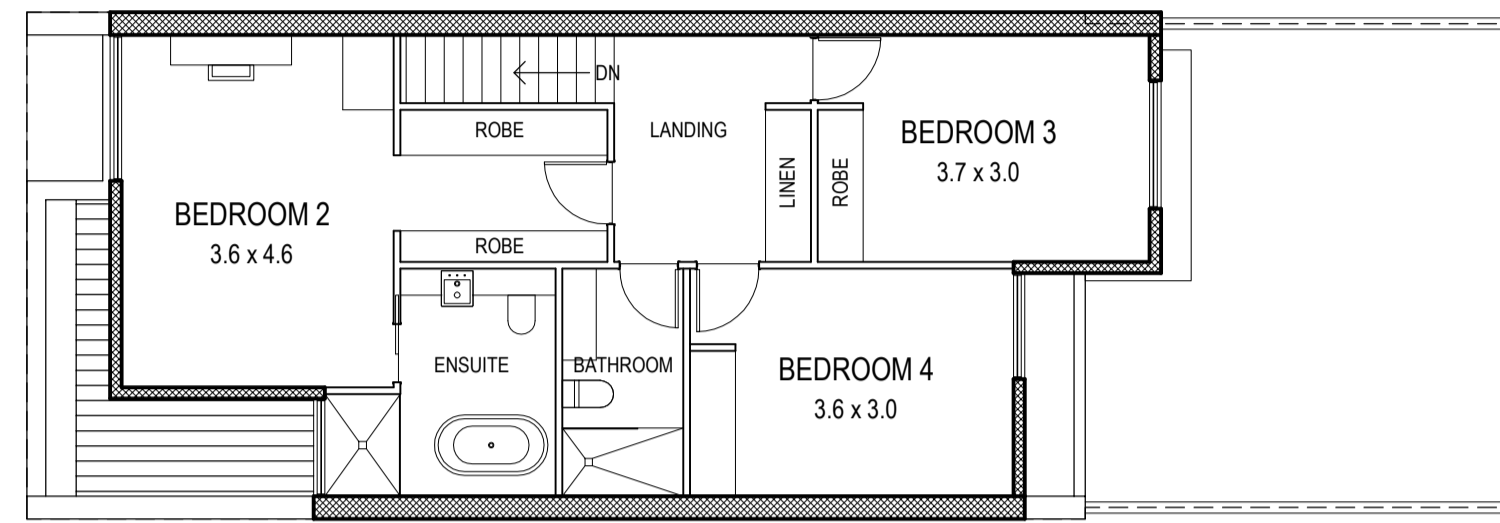
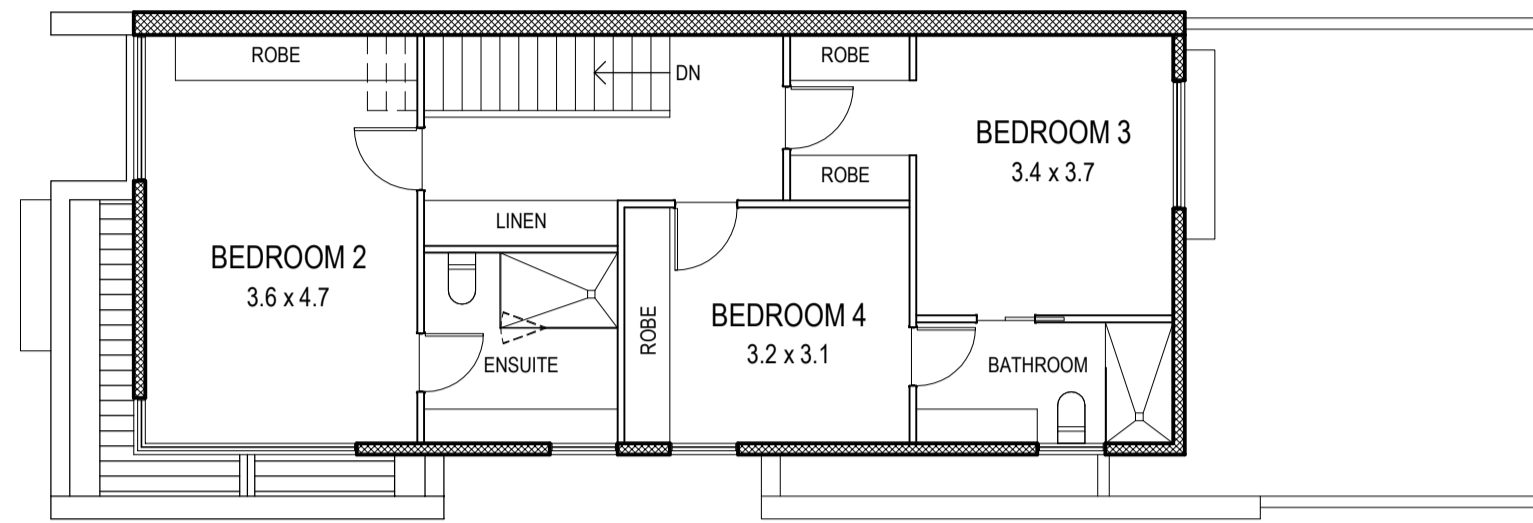
- TOWN PLANNING -
DATE: MAY-01-17
SCALE: 1:100 @ A1
1:200 @ A3
DWG No: TA24
REV: P3
MAY 01 2017

SGOURAKIS
ARCHITECTS
24 GARDNER STREET, MULGRAVE VIC 3170
T: 93 961 986
WWW.SGOURAKISARCHITECTS.COM

Unit Type	Area	Total	254	sqm
Ground Flr	44.80	205.30	Floor area	
First Flr	81.30			
Second Flr	79.20			
Garage	48.80			
Terrace	36.80			
Front Courtyard	17.40	54.20	Open spaces	
Open Space	0.00			

Unit Type	Area	Total	269	sqm
Ground Flr	50.65	218.95	Floor area	
First Flr	87.50			
Second Flr	80.80			
Garage	49.60			
Terrace	36.80			
Front Courtyard	17.40	54.20	Open spaces	
Open Space	0.00			

Unit Type	Area	Total	242	sqm
Ground Flr	23.20	192.80	Floor area	
First Flr	90.40			
Second Flr	79.20			
Garage	49.00			
Terrace	36.80			
Front Courtyard	20.10	56.90	Open spaces	
Open Space	0.00			



UNIT TYPE - **C1**

UNIT TYPE - **C2**

UNIT TYPE - **C3**

No	Date	Description	By
P1	16-05-2017	For Information	
P2	10-04-2017	For Information	
P3	19-04-2017	For Information	
P3	01-05-2017	Town Planning Submission	

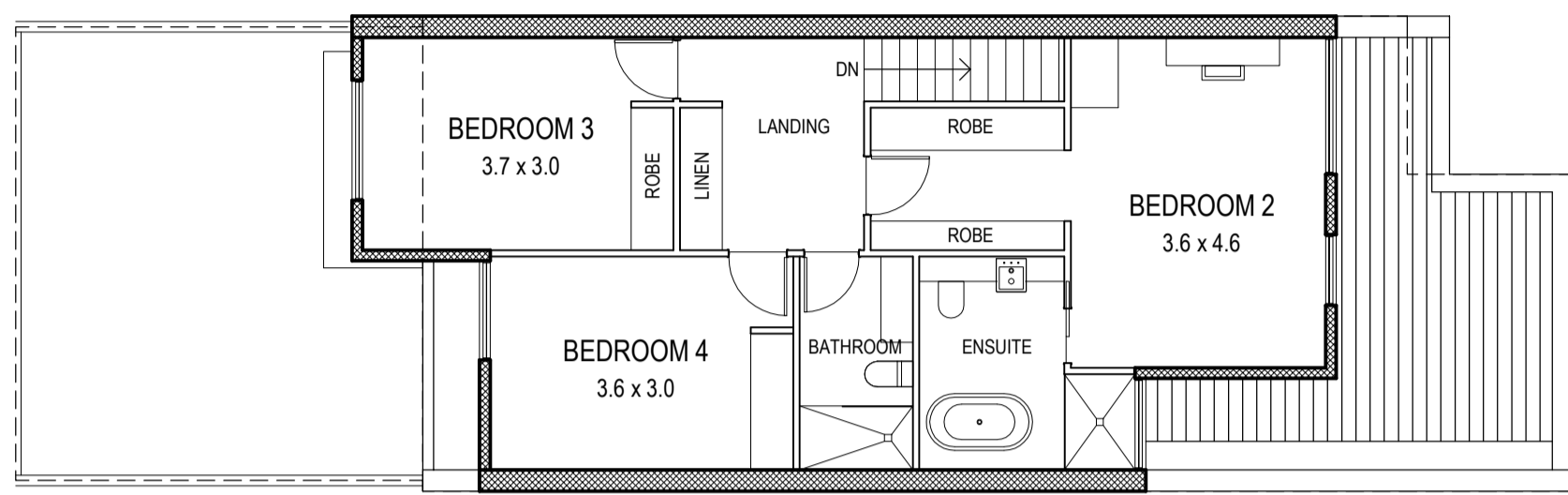
THIS DRAWING IS COPYRIGHT AND THE PROPERTY OF PETER SGOURAKIS ARCHITECT AND MUST NOT BE RETAINED, COPIED, OR USED WITHOUT THE AUTHORITY OF PETER SGOURAKIS ARCHITECT.

N PROJECT:
149 HANSWORTH STREET
MULGRAVE VIC 3170
CLIENT: PONG PROPERTY DEVELOPMENT P/L
DRAWING TITLE:
UNIT TYPES

- TOWN PLANNING -
DATE: MAY-01-17
SCALE: 1:100 @ A1
1:200 @ A3
DWG No: TA25
REV: P3
MAY 01 2017

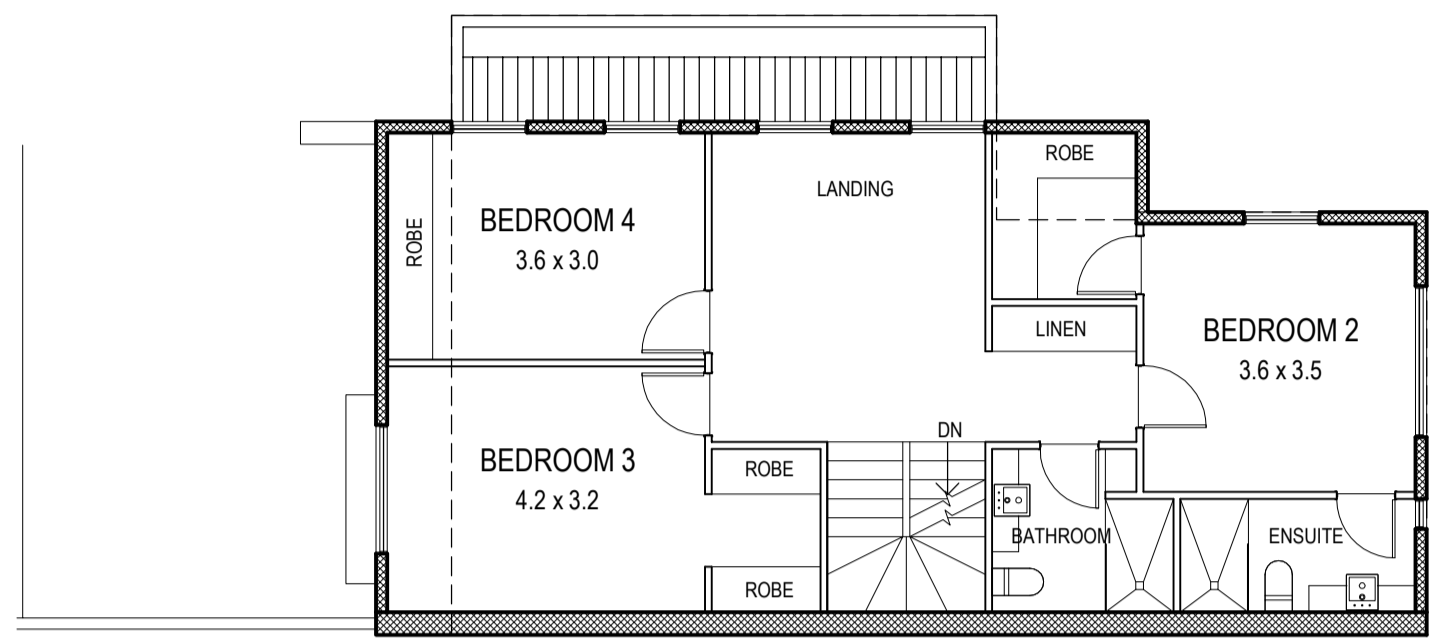
SGOURAKIS
ARCHITECTS
24 GARDNER STREET, MULGRAVE VIC 3170
T: 03 9591 9888
WWW.SGOURAKISARCHITECTS.COM

Unit Type	Area	Total	254	sqm
Ground Flr	26.40	204.75	Floor area	
First Flr	98.85			
Second Flr	79.50			
Garage	49.00			
Terrace	36.80			
Front Courtyard	20.10	56.90	Open spaces	
Open Space				

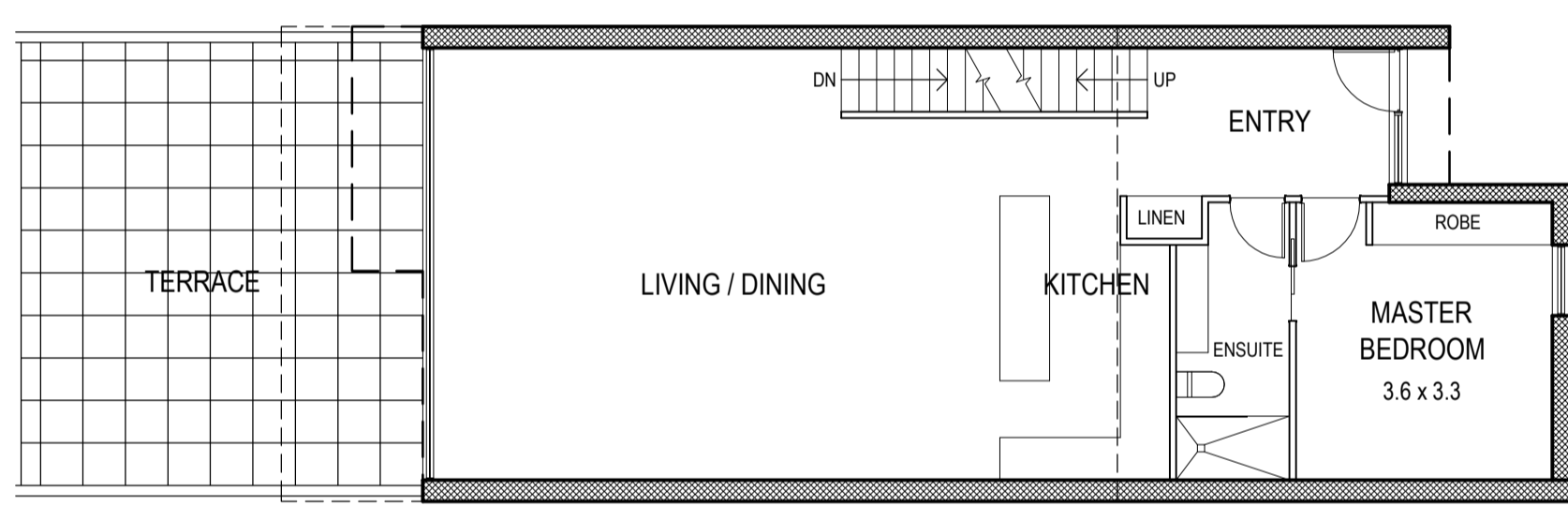


2nd FLR

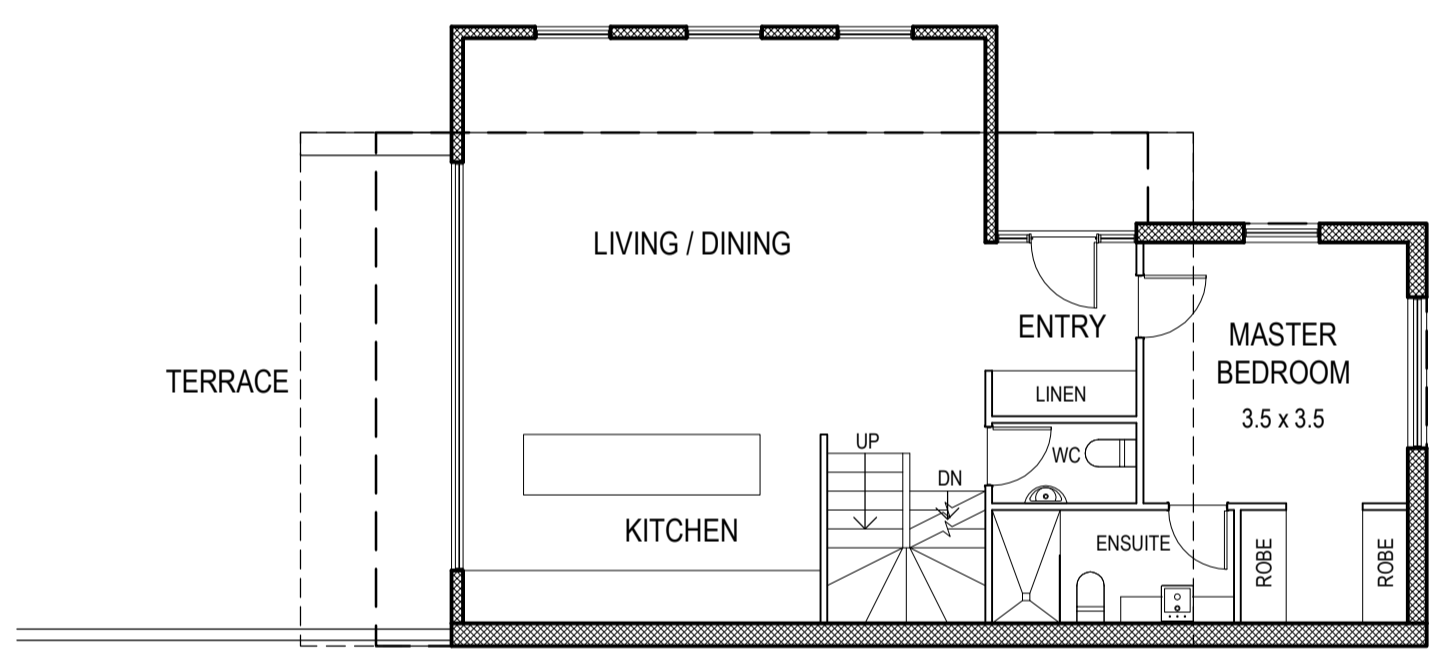
Unit Type	Area	Total	252	sqm
Ground Flr	25.80	201.40	Floor area	
First Flr	88.70			
Second Flr	86.90			
Garage	50.70			
Terrace	75.30			
Front Courtyard	12.70	88.00	Open spaces	
Open Space				



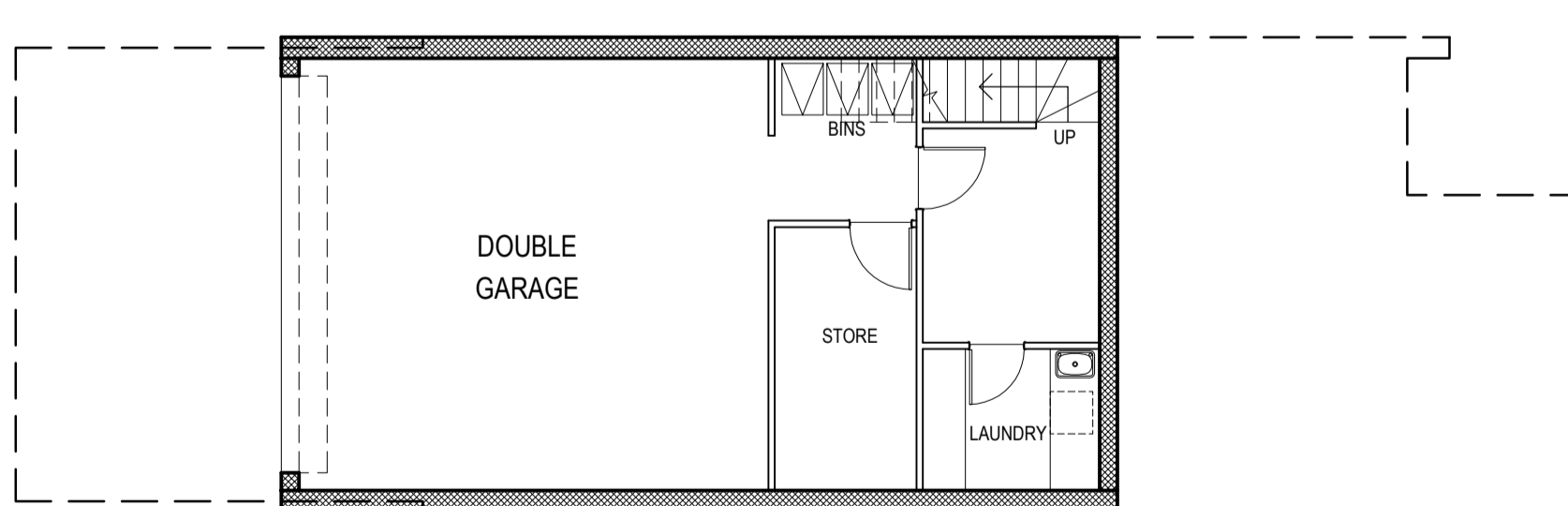
2nd FLR



1st FLR

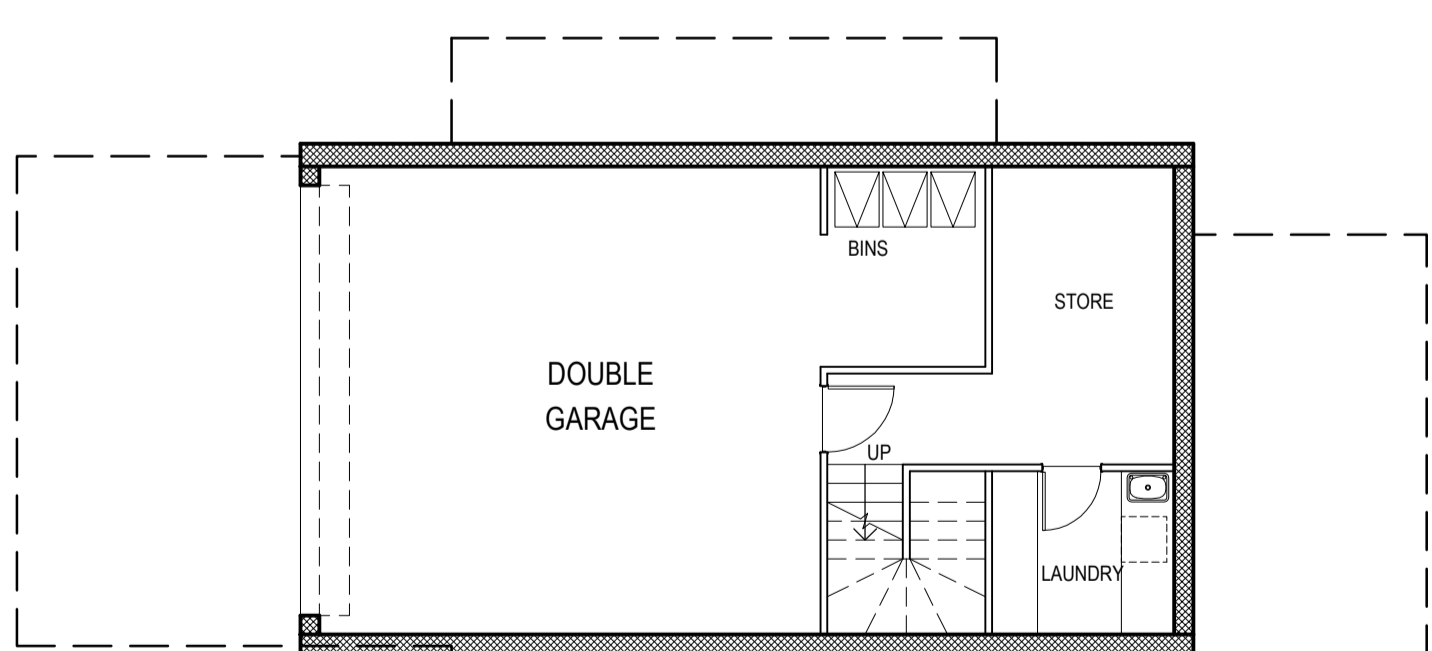


1st FLR



GRND FLR

UNIT TYPE - C4

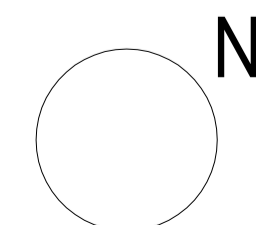


GRND FLR

UNIT TYPE - C5

REVISIONS:			
No	Date	Description	By
P1	16-05-2017	For Information	
P2	10-04-2017	For Information	
P2	19-04-2017	For Information	
P3	01-05-2017	Town Planning Submission	

THIS DRAWING IS COPYRIGHT AND THE PROPERTY OF PETER SGOURAKIS ARCHITECT AND MUST NOT BE RETAINED, COPIED, OR USED WITHOUT THE AUTHORITY OF PETER SGOURAKIS ARCHITECT.



PROJECT:
149 HANSWORTH STREET
MULGRAVE VIC 3170
CLIENT: PONG PROPERTY DEVELOPMENT P/L
DRAWING TITLE:
UNIT TYPES

- TOWN PLANNING -	
DATE:	SCALE:
MAY-01-17	1:100 @ A1
DWG No:	REV:
TA26	P3 MAY 01 2017