

Advised Copy

CITY OF MONASH
This copied document is made available for the sole purpose of enabling its consideration and review as part of a planning process under the Planning and Environment Act. The document must not be used for any purpose which may breach any copyright.

REVISION SUMMARY:	
1.	Townhouse elevations updated

Architect **yellow woods architects**
architecture project management
PO BOX 1310 Box Hill VIC 3128 M+ 0438 840 000
email contact@yellow.net.au

Project PROPOSED RESIDENTIAL DEVELOPMENT AT
149 HANSWORTH ST, MULGRAVE

Project No. 18.206 001 Date 30.11.15 Scale 1:100 @ A1

Title TOWN PLANNING Drawing No. / Rev TP13 / B

Title TOWNHOUSES ELEVATION

Copyright. All drawings and associated designs are not to be reproduced or distributed without written permission from the architect. Check all dimensions and site conditions prior to commencement of any work, the purchase or ordering of any material, fixing, plant, services or equipment and the preparation of any drawings under the knowledge of any contractor. Do not scale drawings - refer to figure dimensions only. Any discrepancies shall immediately be referred to the architect for clarification.

PROPOSED COLOUR SCHEME

TOWNHOUSE
 BOX FIN FINISH - DULUX 'WHITE DUCK'
 WALL CLADDING PAINT FINISH - DULUX 'LINSEED'
 WINDOWS & DOOR - DULUX 'ARMY ISSUE'
 GARAGE DOOR - COLORBOND 'EVENING HAZE'
 GARAGE RENDER - DULUX 'STONECROP'
 BALCONY - DULUX 'SELF-DESTRUCT'

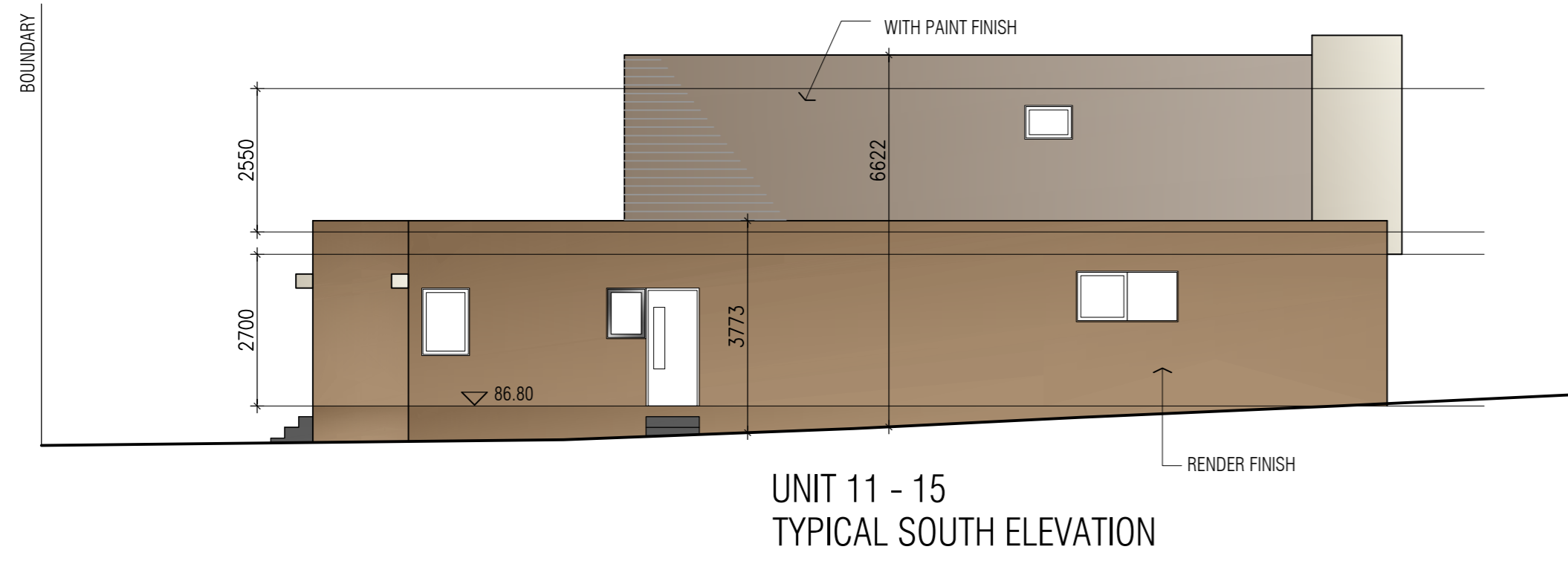
NOTE:
 SPECIFICATION DETAILS MAY VARY DEPENDING ON LOCAL SUPPLIER AND AVAILABILITY
 BASIC COLOUR SCHEME REMAINS
 THIS INITIATIVE SUPPORTS EFFORTS TO REDUCE GREENHOUSE EMISSIONS FOR A SUSTAINABLE DEVELOPMENT



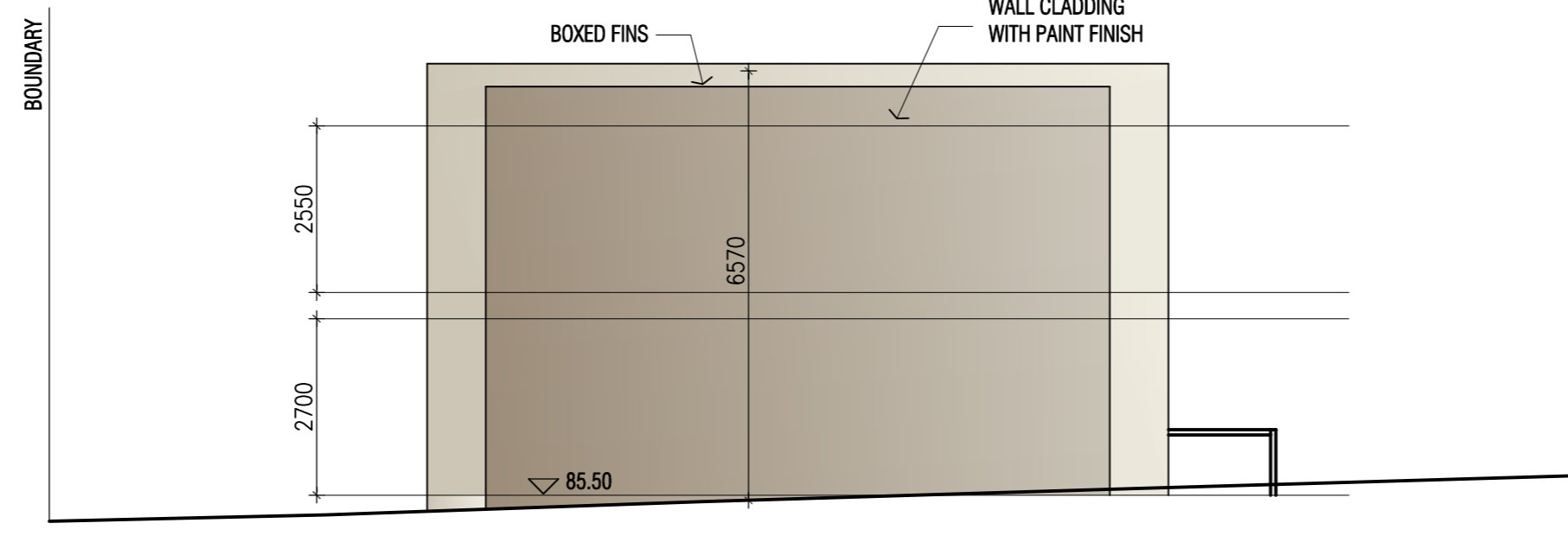
Advertised Copy

CITY OF MONASH
 This copied document is made available for the sole purpose of enabling its consideration and review as part of a planning process under the Planning and Environment Act.
 The document must not be used for any purpose which may breach any copyright.

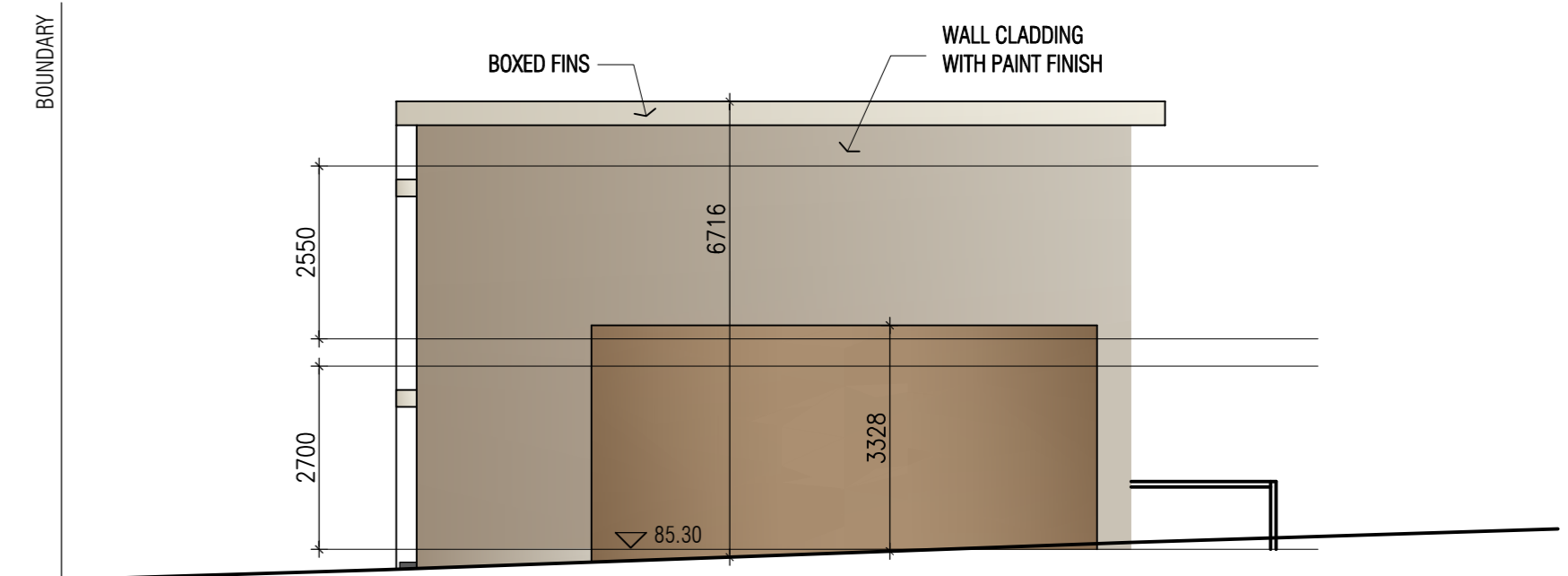
REVISION SUMMARY:	
1.	Townhouse elevations updated



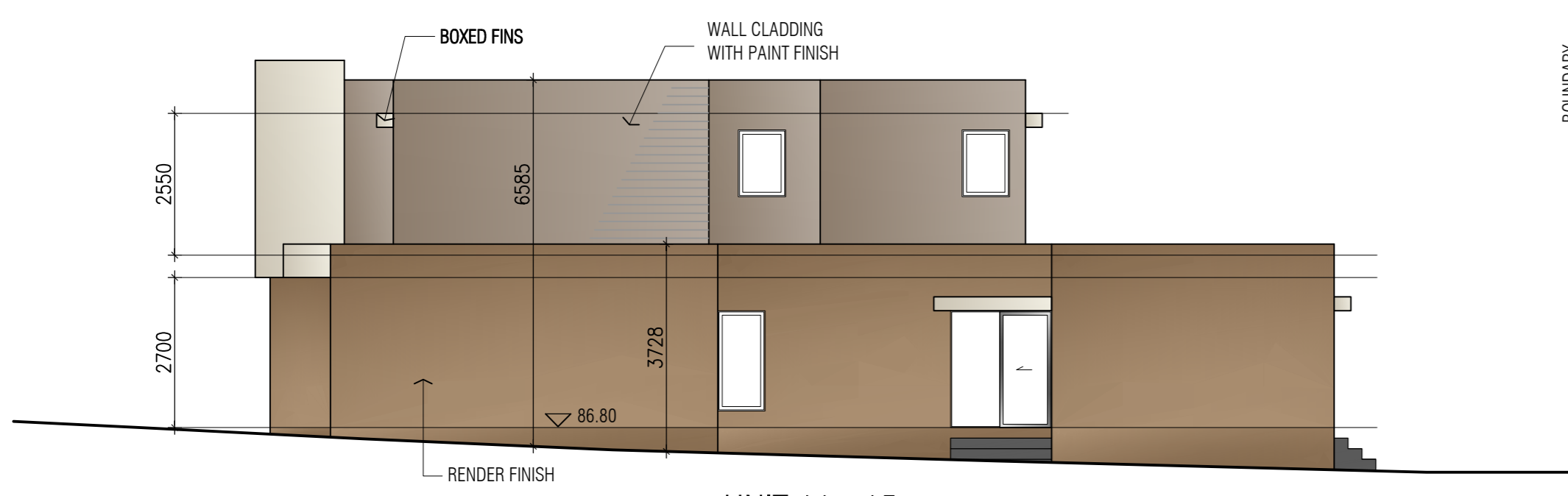
UNIT 11 - 15
TYPICAL SOUTH ELEVATION



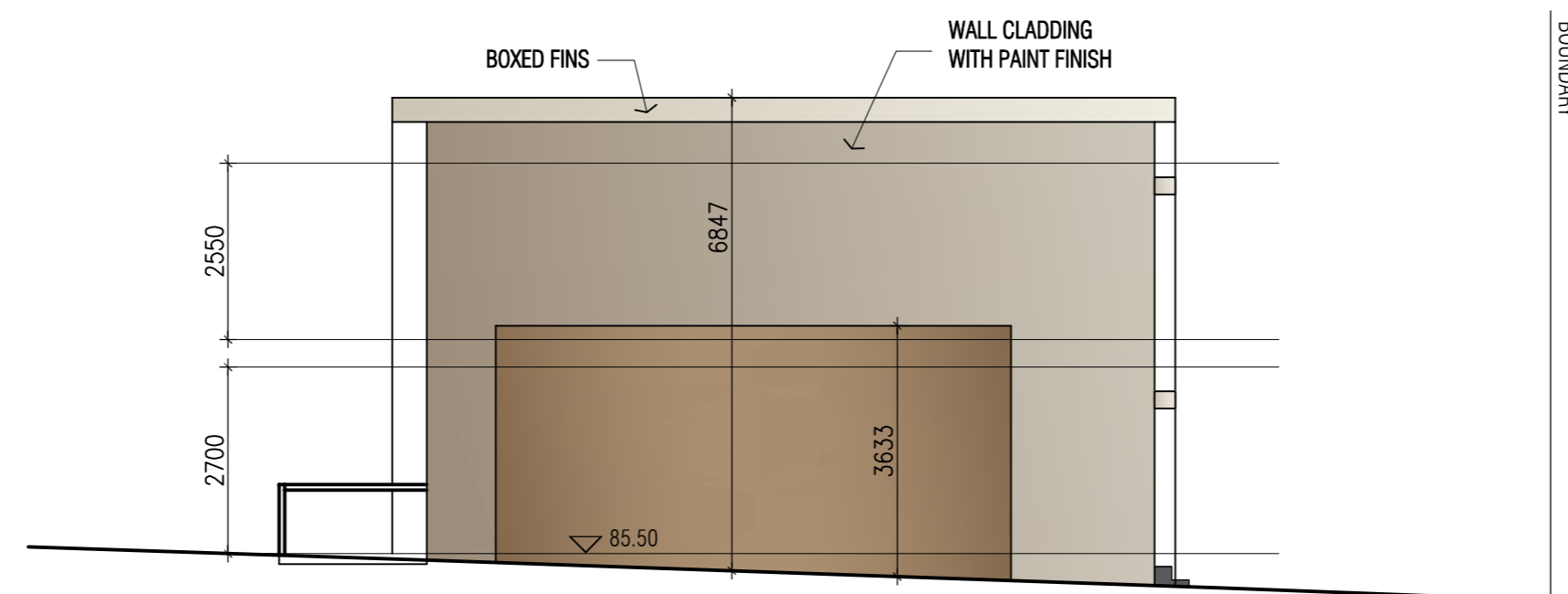
UNIT 16
SOUTH ELEVATION



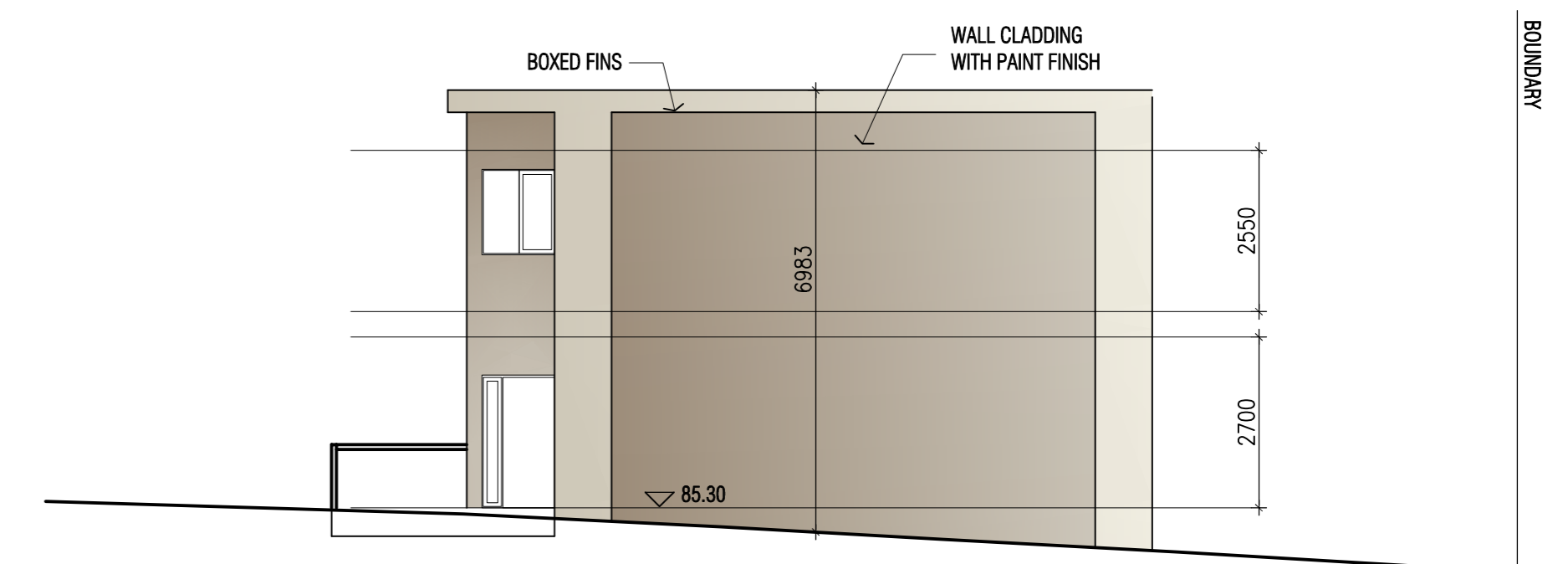
UNIT 17
SOUTH ELEVATION



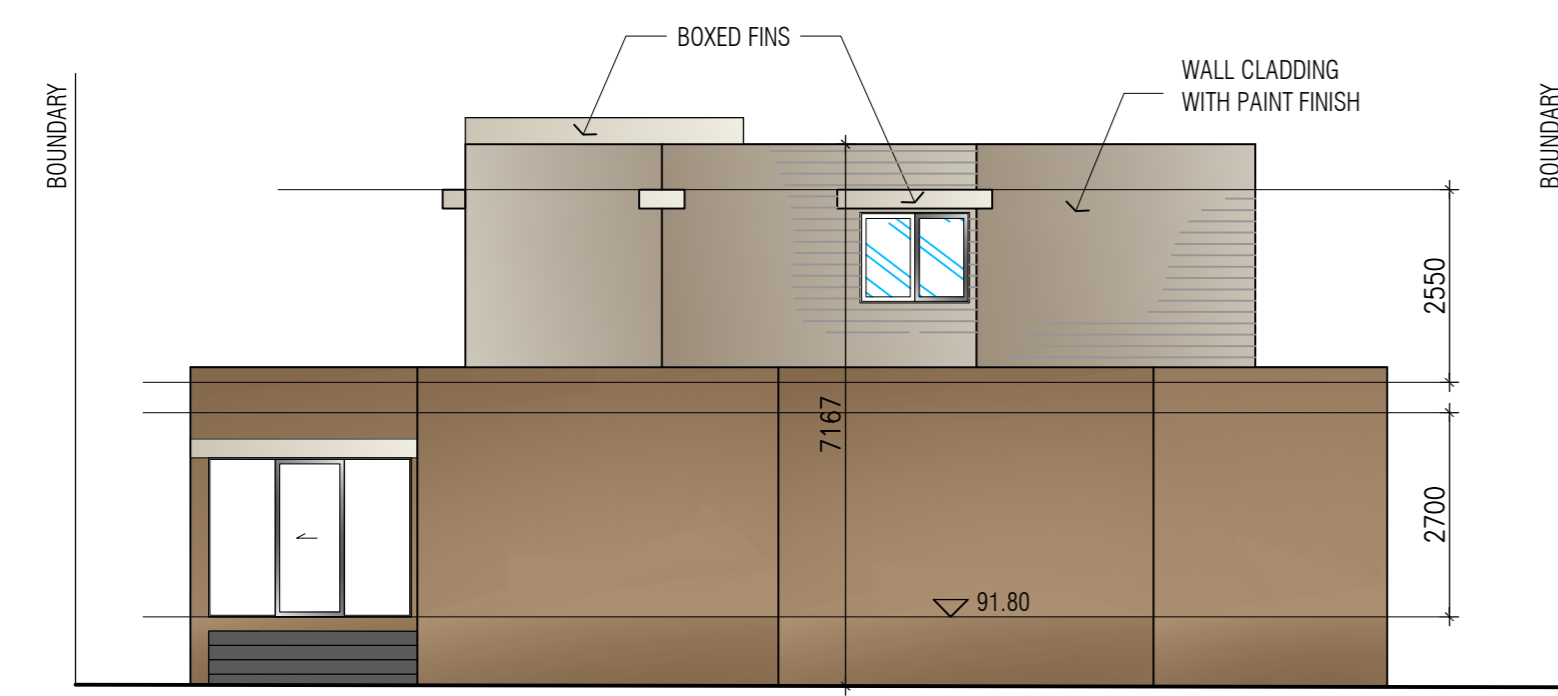
UNIT 11 - 15
TYPICAL NORTH ELEVATION



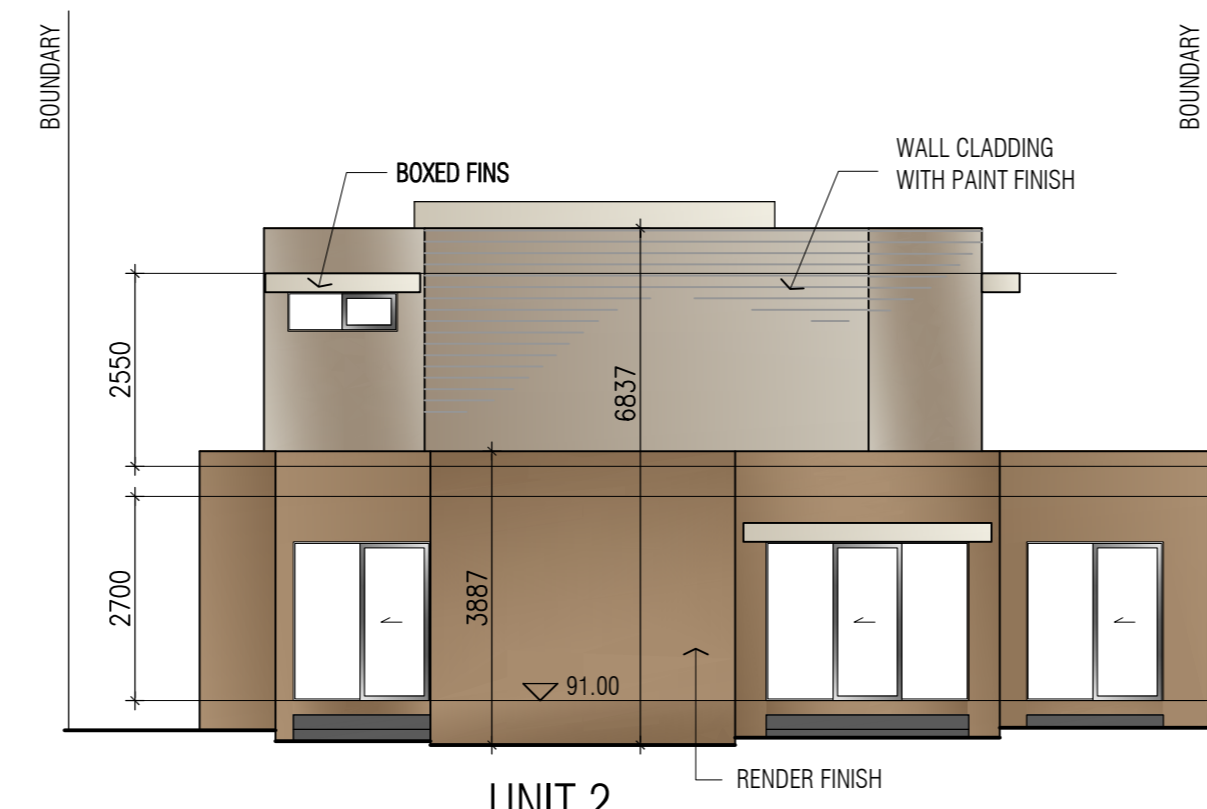
UNIT 16
NORTH ELEVATION



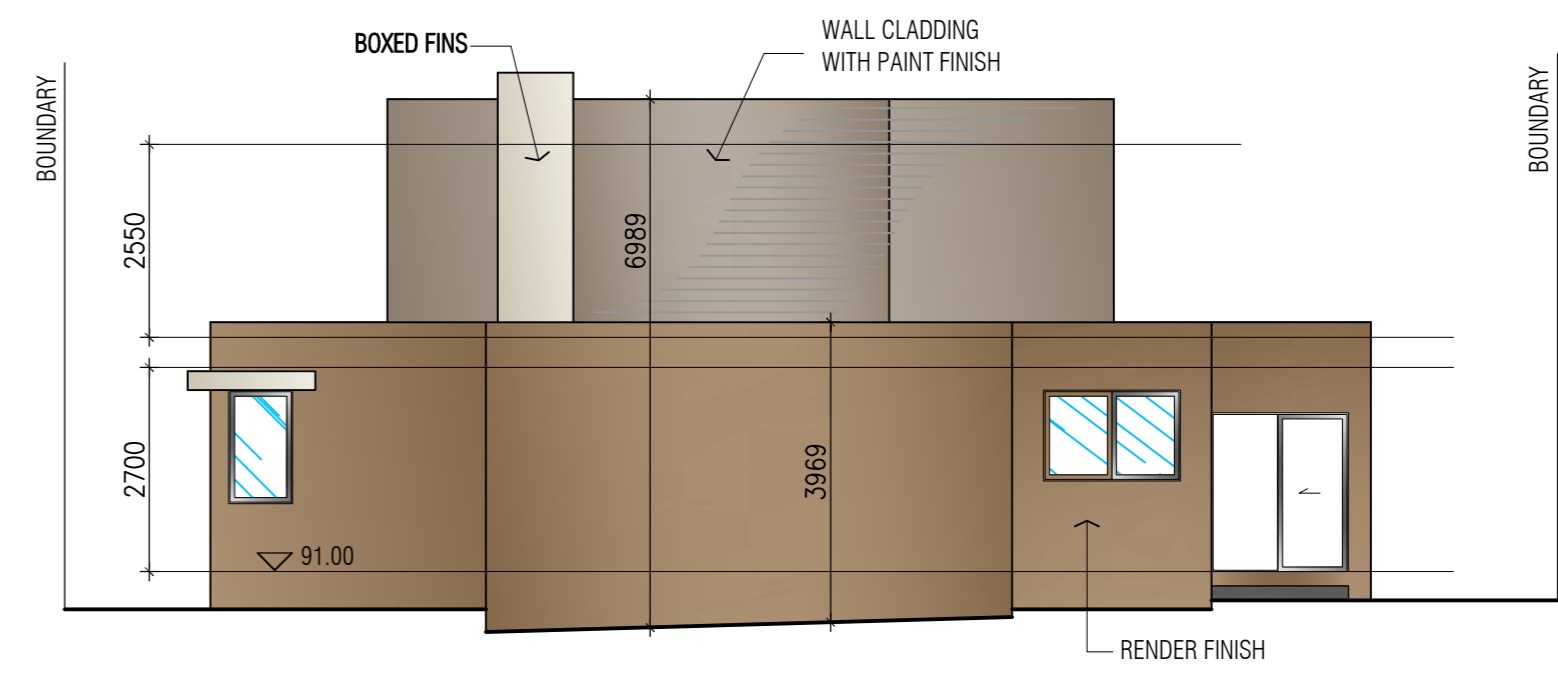
UNIT 17
NORTH ELEVATION



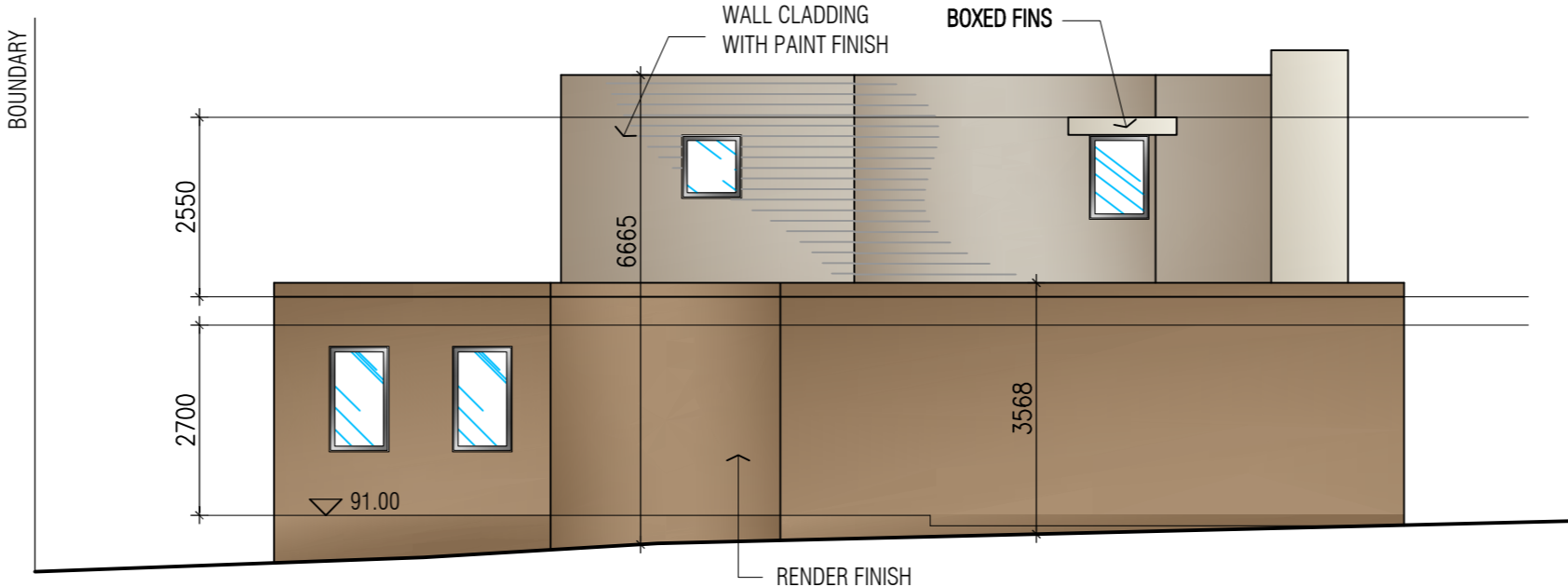
UNIT 1
WEST ELEVATION



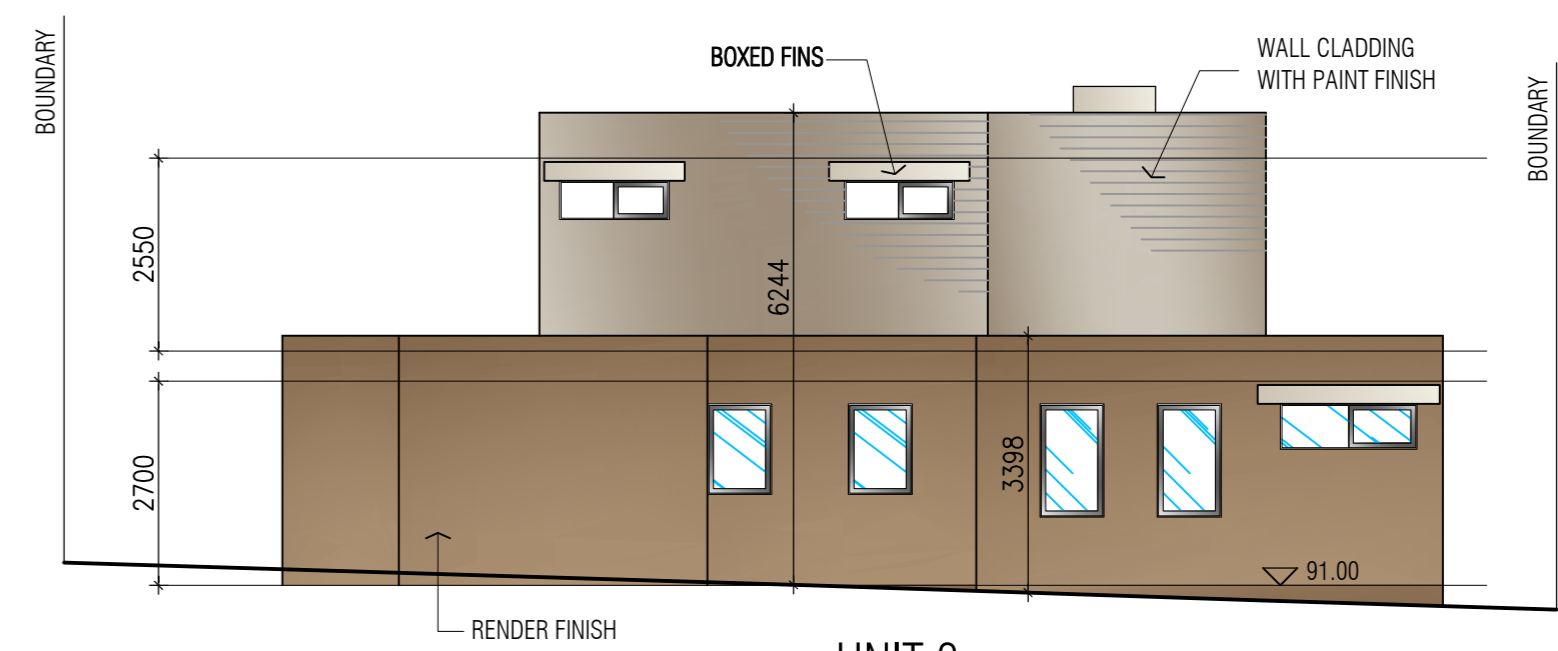
UNIT 2
WEST ELEVATION



UNIT 3
WEST ELEVATION



UNIT 2
SOUTH ELEVATION



UNIT 3
EAST ELEVATION

Advertised Copy

CITY OF MONASH
This copied document is made available for the sole purpose of enabling its consideration and review as part of a planning process under the Planning and Environment Act. The document must not be used for any purpose which may breach any copyright.

REVISION SUMMARY:	
1.	townhouse elevations updated