



## The Year Ahead \$61.9M in improvements

**Council will spend \$61.9M on significant upgrades to community facilities and core services in the coming year.**

To support the Monash community in its management of and recovery from the COVID-19 pandemic, Council will extend for a second year (until 30 June 2022) the option for businesses and homeowners to defer their rate payment with zero interest.

Council will also waive the annual permit fees for footpath dining areas until 30 June 2022 to assist traders who have been severely impacted by COVID lockdowns and closures.

In preparing this budget, Council invited the community to provide feedback about the improvements we were considering.

A highlight of the year ahead is a new \$26.7M 18-court public tennis centre to be constructed in Glen Waverley on land adjacent to the Glen Waverley Golf Course. The Glen Waverley Sports Hub is being developed with \$21M in funding from the State Government, and \$5.7M from Council. After considerable community consultation and input, design work on the new centre is about to begin.

Council will undertake concept and schematic design of the Glen Waverley Civic Precinct Project, incorporating an expanded library, civic hall, workspace and improved public plaza on the current Glen Waverley Library site.

The Carbon Zero project will implement actions endorsed under the Zero Net Carbon Action Plan and progress Council's aim to be carbon neutral by 2025.

The budget has been developed in line with the rate increase cap of 1.5 per cent as declared by the Minister for Local Government. Monash continues to have the lowest average rates on a per capita basis of all 79 Victorian Councils.

This year the recycling and waste levy, a service charge introduced to meet rising costs in recycling and in the State Government's landfill levy, will increase from \$27 to \$42. The impact of the State Government's ban on e-waste going to landfill and the need to secure e-waste processing contracts has contributed to the increased cost.

Eligible pensioners continue to receive a \$50 rebate on their rates and will be provided with a full waiver on the recycling and waste levy.

*Turn to page 4 for more detail on the 2021/22 budget.*



# DISAPPOINTING OUTCOME on Oakleigh South school site

**Council is disappointed with the Victorian Civil and Administrative Tribunal decision to approve construction of 83 two and three storey townhouses on the former 1.86 hectare school site at 1 Beryl Avenue, Oakleigh South.**

Council had refused the proposed Development Plan submitted by the developer Golf Road Project Development Pty Ltd in August 2020 to build 86 townhouses due to several concerns including the scale of the proposal in the local area, the impact on local amenity, the extent of tree removal, and the poor integration into the streetscape, which was dominated by garages and high fencing.

Following Council's refusal decision, a further reduction to 83 townhouses was made before the VCAT hearing in March 2021. In April 2021, VCAT overturned Council's decision. The decision has just been made public by VCAT.

The first development plan was refused by Council in 2015, and the second at Council's meeting on 24 September 2019. The third development plan for 90 dwellings was refused by Council and also subsequently refused by VCAT on 5 May 2020.

The fourth development plan application was subject to community consultation with 449 community submissions received objecting to the proposal.

**Prior to the hearing in March 2021, the applicant lodged a revised development plan which provided further amendments including:**

- » Total number of townhouses reduced by three from 86 to 83
- » Two bedroom townhouses increased from 20 to 22
- » Three bedroom townhouses reduced from 24 to 21
- » Four bedroom townhouses reduced from 42 to 40
- » Number of dwellings to the Golf Course interface reduced from seven to six and provision for two landscaped gaps along this interface.

Council determined that these changes did not resolve all concerns regarding the development prior to the VCAT hearing.

VCAT found that the development responds appropriately to the Beryl Avenue streetscape in terms of sense of address and the presentation of garages, and addresses concerns previously raised that the location of the garages dominated the streetscape.

There is no appeals process for Council to challenge the decision.

**For more info:** [www.monash.vic.gov.au/VCAT-school-site-decision](http://www.monash.vic.gov.au/VCAT-school-site-decision)

## HAVE YOUR SAY: Standing YourGround

**Public safety in Monash is vital and we want you to help us identify any local spaces of concern.**

Monash Council has joined forces with other Victorian councils and Monash University, XYX Lab and CrowdSpot to participate in a digital platform to gather perceptions of safety and make public spaces more inclusive for everyone.

YourGround will map local streets, parks, trails and recreational spaces, sharing the safety experiences of women and gender-diverse people.

Creating inclusive spaces for women and gender-diverse people is a priority state-wide and aligns with Monash's Health and Wellbeing Plan.

The proactive tool sees users anonymously report a location on the interactive map and share an experience they've had while out for exercise or play.

The data will assist Council in understanding safer design principles for future planning to help make Monash's parks and sporting and community spaces more inclusive for everyone to enjoy leisure, sport and play.

**Share your experiences in Monash with us by the end of July 2021.**

**For more info:**

[www.monash.vic.gov.au/yourground](http://www.monash.vic.gov.au/yourground)



### Monash Civic Centre

📍 293 Springvale Road, Glen Waverley  
🕒 8.30am-5.15pm (Mon to Fri)

☎ 9518 3555 ✉ [mail@monash.vic.gov.au](mailto:mail@monash.vic.gov.au) 🌐 [www.monash.vic.gov.au](http://www.monash.vic.gov.au)  
**National Relay Service** (for the hearing and speech impaired) 1800 555 660

### Language Assist

|          |           |          |           |                  |           |
|----------|-----------|----------|-----------|------------------|-----------|
| 普通话      | 9321 5485 | Italiano | 9321 5483 | 한국어              | 9321 5484 |
| Ελληνικά | 9321 5482 | हिंदी    | 7005 3000 | Bahasa Indonesia | 7005 3001 |
| 廣東話      | 9321 5481 | Việt Ngữ | 9321 5487 |                  |           |
| සිංහල    | 7005 3002 | தமிழ்    | 7005 3003 |                  |           |

### Oakleigh Service Centre

📍 3 Atherton Road, Oakleigh  
🕒 8.30am-5.15pm (Mon to Fri)

We welcome your feedback about the Monash Bulletin:  
☎ 9518 3678  
✉ [joanne.robertson@monash.vic.gov.au](mailto:joanne.robertson@monash.vic.gov.au)



## MESSAGE FROM Mayor Brian Little

I was delighted to attend a number of events over the past few weeks after the fourth lockdown ended. Many of these events had to be rescheduled so it was terrific to be able to officially open them and see people enjoying the experience, albeit in smaller numbers than planned. The events included our Refugee Week *Unity: The Way Forward* celebration with musicians Saray Iluminado and the long-awaited opening of several Monash Gallery of Art exhibitions

featuring Stages: photography through the pandemic and Develop. Brilliant and thought-provoking works and I encourage you to take the time to view them.

I was pleased to officially open the Brentwood Reserve Pavilion alongside a number of my Councillor colleagues (*see photo: Crs Shane McCluskey, Stuart James and Tina Samardzija.*) and Member for Mt Waverley Matt Fregon (representing The Hon Ros Spence MP, Minister for Multicultural Affairs, Community Sport and Youth).

This is a fantastic facility that will improve the experience of our local community and sporting clubs. The \$2.2M facility redevelopment received a State Government contribution of \$500,000 through the Sports and Recreation Victoria Community Sports

Infrastructure Fund 2020-21 – Female Friendly Facilities category.

At the June Council meeting the 2021/22 budget was adopted with \$61.9M in spending on critical infrastructure and capital works improvements. Unfortunately we continue to live in challenging times with COVID still very prevalent and Monash has certainly experienced first-hand the health, social and economic difficulties brought on by the pandemic. This is why we have extended the option for ratepayers to defer their rate payments without incurring any interest until 30 June 2022 and why we have waived footpath trading fees for business for the same period. Local government is privileged to be closest to the community it serves and our support and assistance for you continues as we work together to keep ourselves, our families and our community safe.

You can contact me on:

📞 9518 3524/0407 878 033

✉️ [Brian.Little@monash.vic.gov.au](mailto:Brian.Little@monash.vic.gov.au)



## NEXT COUNCIL Meeting

The next Council Meeting will be held on **Tuesday 27 July** from 7pm. The meeting's agenda will be published on Council's website from 5.30pm on **Thursday 22 July**.

Monash residents and ratepayers can ask questions at the meeting, with questions to be submitted to Council by 2pm on Tuesday 27 July.

At the time of going to print the public could attend Council meetings but this is subject to change depending on COVID outbreaks. However, the meeting remains a public meeting with the community able to watch via our livestreaming service at [webcast.monash.vic.gov.au](http://webcast.monash.vic.gov.au)

[www.monash.vic.gov.au/meetings](http://www.monash.vic.gov.au/meetings)

📞 9518 3555

## HISTORIC BUILDING turns 100

You are invited to mark the centenary of a much-loved Monash landmark – the old Oakleigh Council Chambers.

Now home to the Monash Seminar and Training Centre, the building will celebrate its 100th birthday with a free public exhibition over the weekend of 24-25 July.

A new coat of paint and other general cosmetic improvements also mark this historic occasion.

History Monash created the exhibition, which will feature a formal opening reception (by invitation) and two days of public viewing.

Guides will be on hand to explain the heritage-protected building's significant features.

These include artefacts from the former City of Oakleigh and a PowerPoint presentation of old photographs.

The exhibition provides a wonderful opportunity to celebrate a significant milestone in person – COVID-permitting.

### Exhibition Details:

Saturday 24 July, 10am-1pm  
Sunday 25 July, 10am-1pm

FREE entry, no bookings required.

For more info: 📞 9518 3214  
🌐 [www.historymonash.org.au](http://www.historymonash.org.au)



## NEW HUB for kinder and child health

**Mount Waverley will soon have a kindergarten, Maternal and Child Health support and playgroups in one central location.**

The State Government has granted Monash Council \$2M to help build a state-of-the-art early years hub on the Pinewood kindergarten and Maternal and Child Health Centre site.

The Pinewood Early Years Hub will feature beautiful spaces including two kindergarten rooms, an enhanced Maternal and Child Health Service base, specialist consulting rooms and community playgroup areas.

The project is part of the State Government's Building Blocks - Capacity Building 2021-22 Integrated Children's Centre Grant scheme.

Now in the design stage, the Pinewood facility is due to open in mid-2023 and demonstrates Council's strong commitment to improving the accessibility and quality of Monash early childhood services.

It follows Council's first integrated project, the Wellington Child and Family Hub in Mulgrave, which will also offer kindergarten rooms, Maternal and Child Health consulting rooms, specialist consulting rooms and a community playgroup room.

Construction has started on the Wellington Project and is expected to be finished by November, in time for the 2022 kindergarten year.

Council is now working with the Pinewood kindergarten community to ensure a smooth transition and provide information and updates to local residents and businesses about the project.

**For more info:**  [www.monash.vic.gov.au/pinewood-early-years-hub-funding](http://www.monash.vic.gov.au/pinewood-early-years-hub-funding)


## 2021/22 BUDGET highlights

Council has developed the 2021/22 budget in line with the rate increase cap of 1.5 per cent as declared by the Minister for Local Government.

In this Budget, Council aims to continue to provide essential services to the Monash community, support vulnerable residents during the pandemic and protect our long term financial position for the future.

### Highlights of the overall Capital Works program in 2021/22:

- » \$16.4M for building works
- » \$11.8M for plant & equipment, including \$5.9M for computers and telecommunications
- » \$3.3M for plant and fleet renewal
- » \$9.3M for recreational, leisure and community facilities
- » \$9.9M for road works
- » \$6.2M for footpath and cycleways renewal
- » \$4.2M for parks, open spaces and streetscapes and
- » \$2.7M for drainage.

**For more info:**  9518 3555

 [www.monash.vic.gov.au/budget](http://www.monash.vic.gov.au/budget)



## NUMBER 1 AGAIN: Monash tops paint recycling

**Well done Monash residents – you are Australia's top paint recyclers for the fifth year!**

Monash Council has celebrated the national paint recovery scheme Paintback's fifth anniversary as the number one paint recycler.

The scheme takes unwanted paint and paint packaging from more than 150 collection locations nationally, ensuring it is disposed of safely or repurposed for industrial use.

Eight million kilograms of paint waste was diverted from Australian landfills and waterways last year.

Monash has consistently led the state for paint collection at Council's Notting Hill Waste Transfer and Recycling Station.

In 2019/20, Monash again topped the list, recovering 346,053kg of paint and packaging. Since 2016 it has collected 1.145 million kilograms.

The program separates paint packaging and waste liquid, then recycles the containers.

**For more info:**  9518 3555

 [www.monash.vic.gov.au/rubbish-recycling](http://www.monash.vic.gov.au/rubbish-recycling)

## HAVE YOUR SAY: Health and Wellbeing Plan

### Now is your chance to play a part in the health and wellbeing of Monash residents.

Council's draft Monash Health and Wellbeing Plan 2021-2025 outlines our commitment to maximising the health and wellbeing of people who live, work, study and play in Monash.

The state-legislated plan includes public health and wellbeing priorities that are evidence based and important to the Monash community.

Council spent eight months consulting extensively with the community and investigating evidence-based research to develop the draft. It hopes to


implement the resulting 27 strategic health and wellbeing actions over the next four years.

### The plan includes topics such as:

- » Climate change and health
- » LGTBQA+
- » Addressing all forms of discrimination and celebrating diverse communities
- » Gender equity
- » Preventing violence against women and children
- » Healthy eating and preventing obesity
- » Aboriginal and Torres Strait Islander reconciliation
- » Homelessness and social housing

- » Loneliness
- » Mental health
- » People living with a disability and their carers
- » Active living.

From 28 July to 25 August, Council invites your feedback on the Monash Health and Wellbeing Plan 2021-2025 through our website. The final plan will be submitted in October to Council and the State Government.

**Have your say from 28 July - 25 August:**  [shape.monash.vic.gov.au/monash-health-and-wellbeing-plan](https://shape.monash.vic.gov.au/monash-health-and-wellbeing-plan)

**For more info:**  9518 3073  
Mon, Tue & Thu (8am-4pm)

## MOVE OVER *MasterChef*



### What started as a small entrée has grown into a sumptuous feast.

During last year's COVID-19 lockdowns, Monash Youth Services began collecting recipes written for youth by youth. The project has evolved into an outstanding published collection.

Written by local young people, the Monash Youth Cookbook will be available soon free of charge in print and PDF versions.

It reflects the diversity, flair and passion of local cooks and contains cultural favourites, grandparent-inspired treats, meat and dairy-free options and creations using Indigenous-inspired ingredients.

Breakfasts, snacks and side dishes, main meals and sweet treats are all covered. From Kola Kenda, a Sri Lankan green smoothie, and beef curry puffs to fiery lemongrass prawns in special sauce and a wattle seed and lemon myrtle cheesecake, Monash's budding young cooks have *MasterChef* covered.

**For more info:**  9518 3900  
**Order using the dropdown menu on this online form:**  [www.monashyouth.org.au/contact](https://www.monashyouth.org.au/contact)



## SAFER shared paths

### New decals along major shared path routes across Monash will remind cyclists and pedestrians that they are shared areas and users have safety responsibilities when enjoying the paths.

The stickers aim to improve safety for cyclists and pedestrians by prompting them of their responsibilities.

During COVID restrictions, the number of cyclists and pedestrians using shared paths for exercise increased significantly. This caused concern about the speed of some cyclists and how cyclists and pedestrians were using the paths.

Decals will line some of Monash's major shared path routes, including the Djerring Trail, Waverley Rail Trail, Scotchmans Creek Trail, Gardiners Creek Trail, part of the Dandenong Creek Trail, Blackburn Road in Notting Hill and over Oakleigh's Hanover Street bridge.

**For more info:**  9518 3555  
 [rachael.antonacci@monash.vic.gov.au](mailto:rachael.antonacci@monash.vic.gov.au)



# COUNCILLOR NEWS

## Cr Rebecca Paterson



Firstly, I would like to sincerely say thank you to all of you who supported my election to the Mount Waverley ward for a third time. I'm privileged to represent everyone and will work to preserve the beauty of our area while supporting changes that strengthen our community.

Scotchmans Creek is a significant place for many. When a privately owned portion of the creek was put up for sale. I tabled a motion asking Councillors to support an acquisition so that all the Scotchmans Creek trail could be in public hands. I'm really pleased that a majority supported my motion and Council has now acquired this land.

Mount Waverley is known for its beautiful reserves, Damper Creek and Valley. Last year, I asked Council to support changing these to conservation reserves. This means that there are greater legal protections over these sites. This is important because, without the right management, the significant flora and fauna could disappear forever. Council is writing new management plans for the reserves which will allow us to sensitively manage weeds, pests and dying trees and ensure the creeks continue to flow.

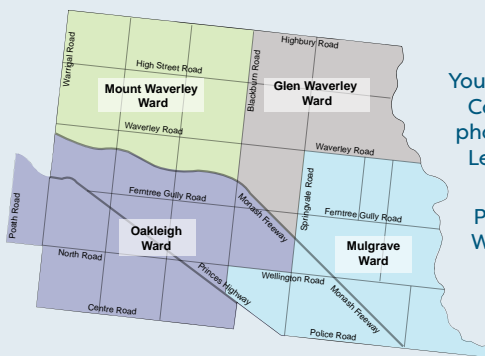
Since the pandemic, we've seen a greater number of people walking their dogs, and many of you have got in touch asking for fenced off-leash dog areas. I asked Council to support an investigation of a minimum of four sites for dog parks and am looking forward to hearing back later in the year when this work is complete. We will then be asking you for your thoughts on creating these dedicated dog spaces.

Finally, four years ago, members of the community told me they wanted a toilet in Holmesglen Reserve which runs along the Gardiners Creek trail, to complement the fantastic playspace and BBQs already there. I'm really pleased to say that after many years of me trying to make this happen, it has been included in our 2021/22 budget. Sometimes things take longer than I would like them to, but it is always worth providing your ideas so that we can start work on making them happen.

If you have any thoughts or feedback on anything about Monash, please let me know. I am always keen to listen and will do my best to try and help.

Feel free to contact me on: ☎ 0437 959 163  
 ✉ [Rebecca.Paterson@monash.vic.gov.au](mailto:Rebecca.Paterson@monash.vic.gov.au)

# YOUR Councillors



You can contact Councillors via phone or email. Letters can be mailed to: PO Box 1, Glen Waverley 3150

## Glen Waverley Ward

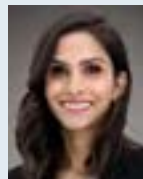


**Cr Geoff Lake**  
 0411 645 281  
[Geoff.Lake@monash.vic.gov.au](mailto:Geoff.Lake@monash.vic.gov.au)



**Cr Nicky Luo**  
 0451 560 398  
[Nicky.Luo@monash.vic.gov.au](mailto:Nicky.Luo@monash.vic.gov.au)

## Mount Waverley Ward



**Cr Anjalee de Silva**  
 0424 679 096  
[Anjalee.deSilva@monash.vic.gov.au](mailto:Anjalee.deSilva@monash.vic.gov.au)



**Cr Brian Little  
 Mayor**  
 9518 3524 /  
 0407 878 033  
[Brian.Little@monash.vic.gov.au](mailto:Brian.Little@monash.vic.gov.au)



**Cr Rebecca Paterson**  
 0437 959 163  
[Rebecca.Paterson@monash.vic.gov.au](mailto:Rebecca.Paterson@monash.vic.gov.au)

## Mulgrave Ward



**Cr Paul Klisaris**  
 0412 516 026  
[Paul.Klisaris@monash.vic.gov.au](mailto:Paul.Klisaris@monash.vic.gov.au)



**Cr Shane McCluskey  
 Deputy Mayor**  
 0466 345 406  
[Shane.McCluskey@monash.vic.gov.au](mailto:Shane.McCluskey@monash.vic.gov.au)



**Cr Tina Samardzija**  
 0435 011 927  
[Tina.Samardzija@monash.vic.gov.au](mailto:Tina.Samardzija@monash.vic.gov.au)

## Oakleigh Ward



**Cr Josh Fergeus**  
 0466 465 421  
[Josh.Fergeus@monash.vic.gov.au](mailto:Josh.Fergeus@monash.vic.gov.au)



**Cr Stuart James**  
 0413 184 250  
[Stuart.James@monash.vic.gov.au](mailto:Stuart.James@monash.vic.gov.au)



**Cr Theo Zographos**  
 0430 316 911  
[Theo.Zographos@monash.vic.gov.au](mailto:Theo.Zographos@monash.vic.gov.au)



## TREE care tips

**A garden with a healthy tree is a real asset, making your house look attractive, cooling and cleaning the air and providing habitat for native wildlife.**

Trees are amazing living and breathing beings. They send signals through the air and soil to other trees and animals and adjust to the environment when it's too hot, too dry or diseased.


### Try these tips for healthy trees:

- » Use natural wood mulch to help keep the roots cool and fertilise the soil. Mulch should be no deeper than 10cms and kept from the trunk to avoid rot
- » Water long, deep and slow in summer
- » Avoid parking on tree roots, as this compacts soil and stops oxygen from reaching them

- » Keep climbing plants off the tree – it can 'strangle' the tree
- » Don't cut roots during plumbing or building works, especially larger ones, as it can starve the tree of food and water
- » Take care to avoid trunk damage when weeding and mowing around the tree, as this can permanently wound the tree and starve it of nutrients and water
- » Carefully consider if pruning is necessary as trees must react and adjust to each wound. If so, complete works with the least impact or use qualified persons.

Celebrate National Tree Day on 1 August by planting a tree in your garden. Consult a nearby nursery to match it to your size garden.

### For more info:

 [www.treeday.planetark.org](http://www.treeday.planetark.org)

## A YEAR OF RECYCLING food waste

**It's been 12 months since we introduced the Monash food waste recycling service and we have seen a decrease in the amount of waste sent to landfill from households. Thank you for recycling food scraps with your garden waste.**

Collected food and garden waste is taken to a Dandenong composting facility where it is processed and turned into compost, ready for use on farms and gardens. Bindi Wines, in the Macedon Ranges, uses this compost to condition and maintain good soil quality for their vineyard.


Grape grower Michael has an important message to share with residents: **"Think and understand that what goes in the food and garden waste bin, will end up with a farmer who is wanting to do something healthy and sustainable on their land."** This is why it's important to only put accepted items in your food and garden waste bin. Check the information on your food and waste caddy to be sure you're putting in the right items.

**Did you know?** You can line your caddy with paper towel or 1-2 sheets of newspaper. You can also buy certified compostable liners – make sure they include this logo:



**For a list of places to buy compostable liners:**  [www.monash.vic.gov.au/food-waste](http://www.monash.vic.gov.au/food-waste)

**If you would like to discuss how the service is working for you, please contact the Sustainable Monash team:**

 [sustainability@monash.vic.gov.au](mailto:sustainability@monash.vic.gov.au)

**For more info:**  [www.monash.vic.gov.au/food-waste](http://www.monash.vic.gov.au/food-waste)



# SOL NATION

Sun 8 August, 2pm-4pm

WINTER  
CONCERT  
SERIES  
2021

FREE CONCERTS  
FOR ALL AGES

Sol Nation is the product of Melbourne's communal musical scene, drawing upon a wealth of international musical culture, this high-energy group brings you a melting pot of Reggae, Samba, Funk, Salsa, East Timorese folk and African dance music.

A must-see musical experience.

📍 Oakleigh Carnegie RSL,  
95-97 Drummond St

**Free entry. Bookings open 9am  
Monday 26 July:**

🌐 [www.monash.vic.gov.au/  
winter-concerts-2021](http://www.monash.vic.gov.au/winter-concerts-2021)



# Monash's Got Talent 2021

Sun 1 August, 3.30pm-6.30pm

Be a part of an audience and see a talent show made by young people for young people.

Audience members will have the chance to win prizes throughout the night, as well as vote for an Audience Choice Winner. Food and drink will be available for purchase. We look forward to seeing you there.

Presented by Monash Youth Services & Quiksound Productions.

Finals will be held at:

📍 Oakleigh Hall, 142-144 Drummond St

If a live event is unable to be held, finalist videos will be shown as a live premiere on the Monash Youth Services YouTube channel.

**Bookings essential:** 🌐 [www.trybooking.com/BSPSZ](http://www.trybooking.com/BSPSZ)



# RUSSIAN Storytime

Third Tuesday of every month to November, 10.30am

Families with young children can now enjoy a storytime in Russian. Enjoy a fun and engaging storytime with songs, finger plays, riddles and craft – all in Russian.

📍 Oakleigh Library, Drummond St

**Bookings open two days before each session at 10am:**

📞 9563 4138 🌐 [www.trybooking.com/BQAHV](http://www.trybooking.com/BQAHV)



Привет



# PUPS ON WINBOURNE

Sat 31 July,  
10am-2pm



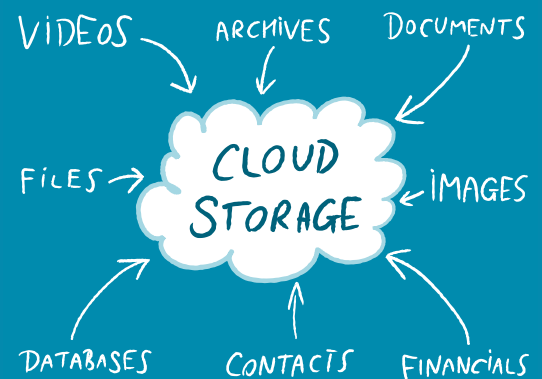
Attention families with fur babies! Join us for a fun day with a range of free activities. Enjoy doggy treat decorating, take part in puppy obedience classes, have a family portrait taken with pet photographers Papparazzi, or purchase puppy fashion and accessories.

Support your local traders and spoil your pup.

📍 Winbourne Parklet - Winbourne Rd  
between Alexander St and Hamilton  
Place walkway  
Mount Waverley Shopping Centre

**For more info:** 📞 9518 3555

Held in partnership with the State  
Government and Monash Council



# INTRODUCTION to Cloud Storage

Thurs 12 August, 10.30am-12pm

What is 'The cloud'? How does it work?  
Where is it?!

You're not alone if these questions have crossed your mind. To learn about the mysterious cloud and how it can back up devices and store digital files/images, book online and find how to use 'the cloud' to your advantage.

BYO device or let us know in advance to borrow one from the library.

📍 Oakleigh Library, 148 Drummond St

**For booking:** 📞 9518 3970

🌐 [www.trybooking.com/BSLOV](http://www.trybooking.com/BSLOV)