

HAVE YOUR SAY ON THE *draft Budget*

Council's draft Budget for the 2021/22 financial year, with a \$61.2M capital works program, is out for your review and feedback.

To support our community as we recover from the COVID-19 pandemic, we are proposing to extend the rate deferral option introduced in last year's budget until 30 June 2022. To receive it, ratepayers must apply declaring how COVID-19 has impacted their ability to pay their rates and/or other charges. Those who applied last year in the first package of support will be automatically eligible for the extension and need not apply again.

This year's budget focuses on infrastructure improvements that cater for Monash's diverse community and serve to continue the area's growth, prosperity and sustainability. It reflects your feedback over the past year about the importance of local neighbourhoods and activity centres.

THIS DRAFT BUDGET INCLUDES:

- » Design work on a new \$26.7M 18-court public tennis centre, with \$21M in funding from the State Government and a \$5.77M commitment from Council on land adjacent to the Glen Waverley Golf Course
- » Concept and schematic design of the Glen Waverley Civic Precinct Project, including a library, civic hall, work spaces and public plaza
- » Local Area Traffic Management Study for Hughesdale to investigate both traffic management and parking issues
- » Playspace upgrades
- » Sportsground lighting improvements
- » Implementation of the actions endorsed under the Zero Net Carbon Action Plan for Council to be carbon neutral by 2025.

Council has developed the 2021/22 proposed budget in line with the rate cap of 1.5 per cent as declared by the Minister for Local Government. Monash continues to have the lowest average rates of all 79 Victorian Councils on a per capita basis.

The recycling and waste levy, a service charge introduced to meet increased costs in recycling and in the State Government's landfill levy, will increase from \$27 to \$42. This increase also reflects the need to secure e-waste processing contracts following the State Government's ban on any e-waste going to landfill, triggering increased costs.

Council continues to provide eligible pensioners with a \$50 rebate on their rates and they will be provided a full waiver of the Recycling and Waste charge.

Have Your Say on the draft budget by Friday 28 May.

For more info: ☎ 9518 3555

🌐 shape.monash.vic.gov.au/draft-budget-2021-2022

The Revenue and Rating Plan, a new requirement under the Local Government Act 2020, considers how Council will generate income to deliver on the Council Plan, programs and services and capital works.

Find out more and have your say on the plan by Friday 28 May at

🌐 shape.monash.vic.gov.au/revenue-rating-plan





SIT BACK AND RELAX in local parklets

As part of Council's response to COVID-19, we wanted to create more outdoor spaces for people to come together, sit and relax in the heart of our activity areas, in accordance with social distancing guidelines.

We're creating three parklet spaces at the Pinewood shops, Winbourne Road (Mt Waverley) and in Kingsway (Glen Waverley) with a \$100,000 State Government grant. Parklets are car parking spaces that are temporarily transformed

into places to meet, eat and relax with outdoor seating and open space.

The colourful and inviting parklets are all designed to be individual to the local shopping precincts and support local traders by creating attractive spaces for people to sit and have a takeaway coffee or ice cream and meet up with friends for a chat.

We are anticipating the parklets to remain in their locations until 22 March 2022.

NEIGHBOURS of Monash

We are inviting you to share your stories of friendship to highlight the value of cultural diversity that exists in Monash and to share the connections that make us a stronger and more vibrant community.

If you have an interesting story to share about a connection you've made with someone from a different cultural background – a neighbour, a school peer or a colleague – we would love to hear from you.

We will celebrate these wonderful stories of neighbourliness and friendships by publishing them in a book.

Stories will be selected for their diversity, neighbourliness and celebration of community connections and belonging in Monash.

You can contribute a story online or ☎ 9518 3555

For more info: 🌐 www.monash.vic.gov.au/Neighbours-of-Monash

HAVE YOUR SAY on cricket in Monash

A Cricket in Monash Discussion Paper has been developed following the Monash Cricket Forum held with clubs and Cricket Victoria in September 2020. The forum was an opportunity for Council to engage with all cricket clubs and discuss issues and opportunities that are unique to the sport.

The Discussion Paper considers issues and opportunities identified by clubs, Cricket Victoria and Council officers at the forum and looks at how the sport can be successful and sustainable in Monash for many years to come.

Council has also developed a draft Cricket Wicket Policy in response to feedback received during the forum about usage and management of cricket wickets in Monash.

All cricket clubs are encouraged to share this opportunity with their members and provide their own responses to questions. The views of all community members and stakeholders are also welcomed. The survey is open until Tuesday 1 June. All submissions and feedback received will be reviewed and used to further develop the draft Cricket Wicket Policy and plan for the future of cricket in Monash.



HAVE YOUR SAY BY TUESDAY 1 JUNE:

🌐 www.monash.vic.gov.au/cricket-paper

✉ recreation@monash.vic.gov.au

☎ 9518 3527

Monash Civic Centre

📍 293 Springvale Road, Glen Waverley
🕒 8.30am-5.15pm (Mon to Fri)

Oakleigh Service Centre

📍 3 Atherton Road, Oakleigh
🕒 8.30am-5.15pm (Mon to Fri)

We welcome your feedback about the Monash Bulletin:
☎ 9518 3678
✉ joanne.robertson@monash.vic.gov.au

☎ 9518 3555 ✉ mail@monash.vic.gov.au 🌐 www.monash.vic.gov.au
National Relay Service (for the hearing and speech impaired) 1800 555 660

Language Assist

| | | | |
|----------|-----------|----------|-----------|
| 普通话 | 9321 5485 | Italiano | 9321 5483 |
| Ελληνικά | 9321 5482 | हिंदी | 7005 3000 |
| 廣東話 | 9321 5481 | Việt Ngữ | 9321 5487 |
| සිංහල | 7005 3002 | தமிழ் | 7005 3003 |

한국어 9321 5484
Bahasa Indonesia 7005 3001



MESSAGE FROM Mayor Brian Little

In this month's Bulletin we outline our draft Budget for 2021/22 and the improvements to infrastructure, programs and services for the year ahead.

It's one of our most significant budgets, as it looks to the rebuild and recovery from the pandemic. During the past year, we've had many conversations with you as we have worked through the challenges of the pandemic together with resilience and hope for the future.

What you have told us over the past months, and what has clearly resonated with you from the long periods in lockdown, is the importance of local neighbourhoods. It's the freedom to get out and into green spaces, to enjoy activity centres and playspaces, and spend time in the local community. It's the importance of libraries and local shopping strips. The importance of community connections in the place we call home.

This has framed our thinking for this Budget. As we launch into the 2021/22 financial year we will be embarking on an ambitious program to improve many of our valued facilities, including reserves, play and leisure spaces, footpaths, roads and drains. These improvements cater for our diverse community and continues the growth, prosperity and sustainability of Monash.



We're also continuing the rate deferral option, put in place last year, until 30 June 2022 for those still dealing with the financial implications of the pandemic. Support is there for you, so please apply for this option if you need to.

Council is partnering with Monash University on an important project to gather information on perceptions of safety in public places for women and gender-diverse people.

The YourGround project will map local streets, parks, trails and recreational spaces, sharing the often hidden experiences of safety for women and gender-diverse people.

Statistics show that movement and access is restricted for women and gender-diverse people due to fear, violence and harassment: while 80% of Australian men report feeling safe while walking alone at night, a 2019 Community Council for Australia report notes that only 50% of women say the same.

This project will help Council understand safer design principles for future planning, making Monash more inclusive for everyone. You can share your experiences and help inform this project at www.yourground.org

Lastly, page 8 of this issue outlines the amazing authors and speakers we have for our WordFest event. We've been bringing you this event for 25 years and this year's program is outstanding.

You can contact me on: [9518 3524/0407 878 033](tel:951835240407878033)
Brian.Little@monash.vic.gov.au

NEXT COUNCIL Meeting

The next Council Meeting will be held on **Tuesday 25 May** from 7pm. The meeting's agenda will be published on Council's website from 5.30pm on **Thursday 20 May**.

Monash residents and ratepayers can ask questions at the meeting, with questions to be submitted to Council by 2pm on Tuesday 25 May.

Under the easing of restrictions, the public gallery will be open for the May Council meeting. Visitors to the Civic Centre will need to check in when entering the building, under our COVIDSafe plan. You can also watch via our livestreaming service at webcast.monash.vic.gov.au

www.monash.vic.gov.au/meetings

[9518 3555](tel:95183555)

KINDER registrations

Registrations for first round offers of 2022 kindergarten places close on 30 June 2021.

If your child turns three or four by 30 April next year, they can attend kindergarten. The Victorian government funds 15 hours per week of low-cost four-year-old kindergarten and five hours of low-cost three-year-old kindergarten for all children. Many eligible children (including Aboriginal and Torres Strait Islander children) can also access reduced cost four-year-old kindergarten and 15 hours of free or low-cost three-year-old kindergarten.

Kindergarten registration is centrally coordinated for 30 participating

kindergartens in our area. You only need to complete one registration to register for any of these kindergartens. If you would like to enrol at a kindergarten not participating in the scheme, you will need to contact them directly.

Registrations will still be taken after 30 June but may not be processed until after third-round offers are completed.

For more info: www.monash.vic.gov.au/kindergarten-enrolments



ACTIONS TO SUPPORT First Peoples

Council will lower the Aboriginal and Torres Strait Islander flags to half-mast each year on 26 January to acknowledge the experience of First Peoples.

Council will also publicly support the newly established Yoo-rook Justice Commission that will examine the lasting effect of colonisation on the social, economic and health outcomes for First Peoples.

Whilst continuing to acknowledge Australia Day on whatever date the Federal Government gazettes, Council will also host a service on 26 January (from 2022 onwards) that acknowledges the loss of culture, language and identity that is felt by the Aboriginal communities on this day.

We will seek advice and input from local Indigenous communities on this service and welcome their contribution and participation.

Council has also resolved to:

- » Publicly support the Uluru Statement from the Heart, which outlines the path forward for recognising Indigenous Australians in Australia's constitution
- » Acknowledges that First Nations people never ceded sovereignty of their lands and have continuously cared for their country for over 60,000 years, as the world's oldest living culture
- » Notes that the first Day of Mourning was held on 26 January 1938, the 150th anniversary of the British invasion, attended by First Nations people and non-indigenous supporters in protest of the national holiday and the treatment of First Nations people
- » Contributes to Makarrata, truth-telling, justice and reconciliation
- » Commits to talking with our community and improving their understanding of First Nations issues, as well as strengthening our understanding of community views on these issues.

Council understands the different positions held regarding Australia Day and will continue to acknowledge Australia Day under the Federal Government's guidelines.

We also believe it is appropriate to acknowledge the pain of our First Peoples with our decision to lower the Aboriginal and Torres Strait Islander flags to half-mast on 26 January and hold a service that acknowledges that this is a day of grief and remembrance for many.

For more info: ☎ 9518 3555

DOMESTIC ANIMAL

Management Plan consultation

Every four years, Councils in Victoria must prepare a Domestic Animal Management (DAM) Plan.

This plan is a strategic framework for animal management in Monash.

The DAM Plan focuses on cats and dogs specifically and outlines the key issues, objectives and priorities for how they will be managed.

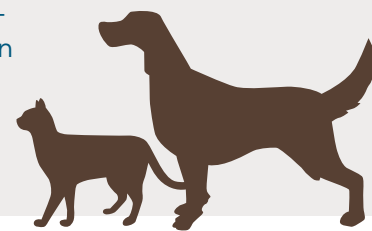
Council is required to adopt a new plan by November 2021 and we are seeking community feedback to inform a draft plan to be presented to Council in the coming months.

After Council has considered the draft plan it will be released for further consultation so you can have a further say on what is proposed.

The survey closes Monday 31 May.

To view the current plan (2017-2021) and take our survey: [shape.monash.vic.gov.au/animal-management-plan](https://www.shape.monash.vic.gov.au/animal-management-plan)

For more info:
☎ 9518 3555



OUR NEW LGBTIQ+ Community Leadership Award!

Council is pleased to introduce our new LGBTIQ+ Community Leadership category in the Sir John Monash Awards for 2021.

The new category is part of Council's ongoing commitment to recognising, representing and connecting with Monash's LGBTIQ+ community.

Do you know someone who is making a difference in the local community? Nominations for our 2021 Sir John Monash Awards are open until **Friday 2 July 2021**.

To find out more about the new category or to nominate: ☎ 9518 3619

www.monash.vic.gov.au/awards

elysia.singam@monash.vic.gov.au

SUPPORT FOR WAVERLEY Women's Sports Precinct Plan

Council has endorsed a significant precinct plan for the Waverley Women's Sports Centre (WWSC).

The sports centre at Jells Park supports women's participation and development in sports, in particular netball and softball and is home to the Waverley Night Netball Association and Waverley Softball Association.

The precinct plan outlines an aspirational design to enhance the appeal, community use and functionality of the site. The precinct plan will guide the future planning, sport facility and infrastructure provision at the WWSC over the next 10-15 years.

The development of the precinct plan was fully funded through a State Government grant. It is

recommended that future improvements to WWSC be undertaken in six stages.

The centre is a significant location for providing pathways for girls and women to participate in sport, from the grassroots level to state representation.

Council has already received \$2M from the State Government for stage 1, an upgrade of the outdoor netball courts, currently underway.

All other remaining works (stages 2-6) are subject to Council budget approval and/or external funding, detailed design and community consultation.

The community was invited to have their say on the draft precinct plan last year with almost three quarters



of respondents being people who use the facilities, including players and spectators.

The feedback showed that almost half (46%) of the responses in support of the draft precinct plan wanted to see general improvements to the overall amenity of the area, followed by specific improvements to sporting facilities (21%), safety (16%) and aspects like lighting (11%) and car parking/paths (5%).

For more info: ☎ 9518 3555
🌐 www.monash.vic.gov.au/waverley-womens

PATHWAYS to EQUALITY



NEW ARTWORK to showcase Pathways to Equality

A project to raise awareness of respectful relationships and challenge gender stereotypes is taking place in Ashwood and Chadstone, in collaboration with the local community.

Council is engaging an artist to do a mural on the railway overpass on Winbirra Parade in Ashwood and stickers on the footpath between Batesford Reserve and Power Neighbourhood House.

The theme will celebrate gender equality, respectful relationships and challenge gender stereotypes, while also capturing the heart of Ashwood.

Consultation with the local community was undertaken earlier this year and residents in the Ashwood and Chadstone area can vote for the design that best represents the inclusivity and diversity of Ashwood in June 2021.

For more info: 🌐 shape.monash.vic.gov.au/pathways

HAVE YOUR SAY: Monash Youth Survey

Monash Youth Services (MYS) is encouraging all young people aged 10-25 who have a significant link to the City of Monash to complete the Monash Youth Survey 2021.

The results of the survey will guide the themes and actions that Council will take in response to the needs of young people in the community, including the services and programs offered by MYS.

Share your concerns and experiences as a young person in Monash and go in the draw to win one of three prizes: Razer gaming headset Blackshark V2 X, a 12-month Zoos Victoria membership, or a Fitbit Inspire.

Have your say by Friday 4 June 2021 at:
🌐 shape.monash.vic.gov.au/2021youthsurvey

For more info: ☎ 9518 3900



COUNCILLOR NEWS

Cr Paul Klisaris

This is my first column since I was re-elected to Council in October 2020 and I want to thank everyone who gave their support to me. I have been a passionate advocate for Monash since I was first elected to Council in 2000. I have seen our community meet its challenges with determination and spirit, and celebrate the wins together.

Last year was a very challenging year for those in business, for families and in particular, our vulnerable older community. As an educator, it was sad to see children isolated from their friends and school mates but the combined effort has held us steady and we are fortunate to be in the position we are in and able to go about our lives in mostly normal ways unlike many other countries who are facing very confronting times.

I was thrilled to celebrate Greek Easter this year with family and friends, these are important days and it was wonderful to be together.

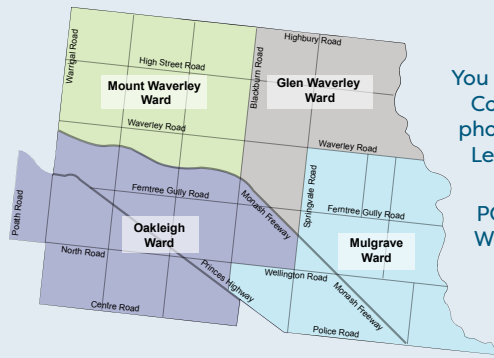
I am also delighted that plans for the expanded Mulgrave Library project have received a funding boost from the State Government's Living Libraries Infrastructure Program. The project will see the library space increase, creating more space for community groups and activities. This has been something I've advocated for, as I know how much this library means to the local community and how valued its services are. Libraries are places where the community come together, and I can't wait to see this fantastic upgrade when it's completed hopefully later this year.

As a keen supporter of the Sir John Monash Awards, I welcome a new category to the awards that recognises and acknowledges those community members for their leadership and support for our LGBTIQ+ (lesbian, gay, bisexual, trans and gender diverse, intersex, queer and asexual) communities. Nominations for this award, and the other eight categories, are open until Friday 2 July so get those nominations in!

Feel free to contact me on: 📞 0412 516 026

✉️ Paul.Klisaris@monash.vic.gov.au

YOUR Councillors



You can contact Councillors via phone or email. Letters can be mailed to: PO Box 1, Glen Waverley 3150

Glen Waverley Ward

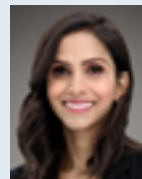


Cr Geoff Lake
0411 645 281
Geoff.Lake@monash.vic.gov.au



Cr Nicky Luo
0451 560 398
Nicky.Luo@monash.vic.gov.au

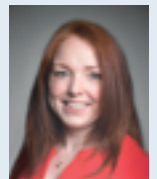
Mount Waverley Ward



Cr Anjalee de Silva
0424 679 096
Anjalee.deSilva@monash.vic.gov.au



**Cr Brian Little
Mayor**
9518 3524 /
0407 878 033
Brian.Little@monash.vic.gov.au



Cr Rebecca Paterson
0437 959 163
Rebecca.Paterson@monash.vic.gov.au

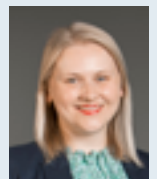
Mulgrave Ward



Cr Paul Klisaris
0412 516 026
Paul.Klisaris@monash.vic.gov.au



**Cr Shane McCluskey
Deputy Mayor**
0466 345 406
Shane.McCluskey@monash.vic.gov.au



Cr Tina Samardzija
0435 011 927
Tina.Samardzija@monash.vic.gov.au

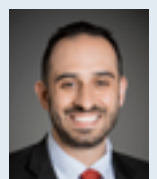
Oakleigh Ward



Cr Josh Fergeus
0466 465 421
Josh.Fergeus@monash.vic.gov.au



Cr Stuart James
0413 184 250
Stuart.James@monash.vic.gov.au



Cr Theo Zographos
0430 316 911
Theo.Zographos@monash.vic.gov.au



WINTER CONCERTS *are back!*

Join us to celebrate the return of live music at our exciting up-tempo series of Winter Concerts 2021!

This series of FREE concerts will include performances by:



SUNDAY 6 JUNE

'The Count' at Monash University Clayton

Cookin' On 3 Burners: Australia's hardest hitting Hammond Organ Trio, joining the dots between Deep Funk, Raw Soul, Organ Jazz and Boogaloo.

WEDNESDAY 7 JULY | NAIDOC WEEK

Mt Waverley Community Centre

Kee'ahn: a proud Kuku Yalanji, Jirrbal, Zenadh Kes song woman, effortlessly blending the sounds of soul, R&B and pop throughout her music, in lush melodies and words that are reminiscent of heartbreak and healing.



SUNDAY 8 AUGUST

Oakleigh Lounge, RSL Drummond St

Sol Nation: the product of Melbourne's communal musical scene draws upon a wealth of international musical culture to bring you a melting pot of Reggae, Samba, Funk, Salsa, East Timorese folk and African dance music.

SUNDAY 5 SEPTEMBER | KIDS SHOW

Clayton Community Theatre

Cosmic Cats: This cool crew will have you up and dancing with a variety of rock and pop songs from the 80s, 90s and today. Aimed at all ages, but especially fun for kids!



All concerts are FREE to attend, however bookings are essential.

For more info: www.monash.vic.gov.au/winter-concerts-2021

OPEN YOUR GARDEN in 2021

Waverley Garden Club (supported by Monash Council), will hold its annual Open Gardens Day in November this year.

The club is inviting Monash residents to open their gardens on the day. Perfection or perfectly manicured gardens are not required – people who enjoy gardening and would like to share their experience with like-minded people are encouraged to take part. No garden is too big or too small.

For more info and to register your garden, contact Peter Moskvic on [0418 110 345](tel:0418110345)

petermoskvic@gmail.com



ACTIVE WINTER program

Active Winter is an exciting new initiative and collaboration with local sporting clubs, building connections and creating opportunities for the Monash community to be more physically active across the coming winter months.

Launching in June and continuing through August 2021, the program offers a variety of sporting opportunities and activities across Monash for residents to choose from.

More information will be available on Council's website and our social media channels in the lead up. Stay tuned!

For more info: [9265 4807](tel:92654807)

Active.Communities@monash.vic.gov.au



STREET LIBRARIES are popping up in Monash

Street libraries are small neighbourhood book exchanges, usually hosted by individual households to encourage a love of books and reading.



Newly installed Street Library in Kalymna Grove, Chadstone

Accessible from the street and available to everyone (take a book and leave a book). The libraries are a great way to connect and share in the neighbourhood.

Council has supported many street libraries in Monash through our grants program and partnerships with Men's Sheds. There are now over 15 street libraries in Monash, located in front of resident's homes, schools and Neighbourhood Houses.

To find out more about building, buying and registering a street library, or to find a street library near you: streetlibrary.org.au

For more info contact Monash Council's Neighbourhoods and Placemaking team: [9518 3555](tel:95183555)

WORDFEST

Transcend the ordinary

17 June - 18 July 2021

25
years

WordFest is the annual literature festival held by Monash Libraries. The festival includes author talks, writing workshops and Short Story Writing Competition. All festival speakers and author talks are FREE, however workshops cost \$10.50.

Bookings are essential: www.monlib.vic.gov.au/wordfest



LAUNCH Virginia Trioli

MGA
Thur 17 June
7pm-8.30pm

Join two-time Walkley Award winner and one of Australia's best-known journalists, Virginia, as she discusses why her book *Generation F: Why we still struggle with sex and power*, written 25 years ago about the ongoing need for feminism is still so relevant today.

SIR JOHN MONASH LECTURE

Fire, Flood, Plague

Monash Gallery of Art
Wed 14 July, 7pm-8.30pm

Panel Discussion with: Sophie Cunningham (Participating Chair), James Bradley and Melanie Cheng.

Last year began with firestorms raging through the country, followed by floods, and then a global pandemic. In this panel discussion, named after the acclaimed book *Fire, Flood, Plague*, three of its writers will join us to discuss our recent past, the near future and their perspectives on bearing witness and the urgent conversations that are needed if we are to cool our overheated planet.

SHORT STORY WRITING COMPETITION

Let your writing transcend the ordinary and enter the Short Story Writing Competition open to ages: 12-14 years, 15-17 years and Adult.

Cash prizes awarded.

Competition opens
Thursday 17 June and
closes Sunday 18 July.

AUTHOR TALK

Heather Morris

Mt Waverley
Community Centre
Tues 22 June
7pm-8.30pm



KEYNOTE

Sally Rugg

MGA
Wed 23 June
7pm-8.30pm



AUTHOR TALK

Jacinta Parsons

Clayton Library
Thur 24 June
7pm-8.30pm



WORKSHOP

Unleashing Your
Poetic Voice

Amy Bodossian

Wheelers Hill Library
Sat 26 June
2pm-3.30pm



KEYNOTE PANEL

The 'Hidden' History
of Women

Facilitator: Kelly Gardiner

Panellists:

Michelle Scott-Tucker

Mirranda Burton

Dr. Victoria Grieves-William

MGA

Tues 29 June
7pm-8.30pm

AUTHOR TALK

Sofie Laguna

Mt Waverley
Community Centre
Thur 1 July
7pm-8.30pm



WORKSHOP

Youth Writing

Mark Smith

Mt Waverley Library
Sat 3 July
2pm-3pm



AUTHOR TALK

Tyson Yunkaporta

Online (Zoom
Webinar)
Tues 6 July
7pm-8pm



AUTHOR TALK

Kirsten Alexander

Brandon Park
Community Centre
Thur 8 July
7pm-8.30pm



WORKSHOP

Adult Writing

Alex (A.W) Hammond

Glen Waverley
Library
Sat 10 July
2pm-3.30pm



AUTHOR TALK

J.P. Pomare

Mt Waverley
Library
Tues 13 July
7pm-8.30pm

